

AUCTION TWO – RAYTHEON AIRCRAFT

303 S. Greenwich – Wichita, Kansas

FRIDAY & SATURDAY, MAY 20 & 21 • 9:00 A.M.

NOTE : This auction will include over 5,800 line items of NEW Beechcraft parts. These parts will fit the following types of aircraft: Musketeer, T-34 Bonanza, A-36, Baron & P-Baron, Duke, Duchess, Travel Air, King Air, Queen Air, Beech 99 & 1900. Inventory will include everything from landing gear parts and pieces, control surfaces, airframe inv., skins, brackets, channels, interior inventory, instruments, large selection of electrical and lighting inv., large selection of hardware, etc. All material will come with Certificate of Conformity (C of C) and or 8130's.

For a complete part number and description listing visit our web site www.starmanauctions.com click on upcoming auctions, scroll down to Raytheon Aircraft. This will be the first of three auctions to be held in 2005 for Raytheon Aircraft.

MISC. BEECH JET INVENTORY

BARON & A-36 INVENTORY

PC Boards, Panels, Elec. Boxes, Push Rods, Tubes, Stiffners, LDG Supports, Brackets, Doors, Doublers, Beams, Retract Rod Boots, Tubes, Fuel Selectors

KING AIR INVENTORY

PC Boards, Doublers, Bulkheads, Angles, Decals, Box Assys., Covers, Supports, Large Selection of Fuel Qty. Probes, Inboard Wing Fuel Cells, Damper Assys., Chain & Cable Assys., Channels, Boot Assys., Deck Assys., Weld Assys., Brackets, Delce Tubes, Panels, Plates, Skins, Doors, T.E. Ribs, EL Panels, Annunciator Panels, Good Selection of Instrument & Avionics Installation Kits & Inv. & Harness, Low Fuel Warning Module, Brake Delce Modules, Shafts, Guides, Lift Computer, Flow Control Valve, Turn & Banks, Oxygen Hose, Airspeed Ind., Shut Off Valves, Fire Pull Handle Assy., Check Valves, Controllers, Power Pack Assy., Transducers, Oil Coolers, Large Selection of Skins, Nose Cone Assys., Crew Windows, Floorboards, Frame Assys., Bulkheads, Stringers, Ventral Fins, Rudder Actuators, Interior Inventory, Window Panels, Arm Rests, Toilet Inv., Chairs & Couches, Seat & Base Assys., Air Plenums, (2 Ea.) Elevator Assys., Control Surface Skins & Stringers, Door & Cowl Inv., Exhaust Pipes, Etc.

P-BARON INVENTORY

Bulkheads, Windows, Out Flow Valve Controller, Door Latches, Buckets, Skins, Doors, Weld Assys., Cowling Inv., Tubes, Etc.

MUSKETEER INVENTORY

Wing Stringers, Wing Spar, & Skins, Windshield, Mufflers, Carb. Valves, Baffles, Landing Gear Forks, Glare Shields, Plates

DUKE & T-34 INVENTORY

Canopy Track, Elev. Bellcranks, Handles, Shafts, Brackets, Tubes, Honeycomb Panels, Bushings, Supports, Ribs, Skins, Gears, Housings

BARON INVENTORY

Exhaust Stacks, Actuators, Rudder Control Rods, Shafts, Bellcranks, Tubing, Channels, Baffles Control Tubes, Latches, Control Plates, Stiffners

AVIONICS & INSTRUMENTS

Avionics Mounting Trays, Avionics Installation Kits, KA Lift Computer Turn & Bank Assys., Airspeed Ind., Fuel Flow Inds., Interstage Turbine Ind., Flite Phones, Very Large Selection of Instrument & Avionics Repair Inv., Installation Kits, Harness, Etc. Coax Cable, Radome Boots, TCAS & Radar Install Kits, Servo Mounts, Fuel Indicators, Air Speed Ind., Voice Recorders, EFIS Inv., Nav's, Radar's, RMI's, Transponders, Large Selection of All the Above

NOTE: This list is only a sampling of the inventory to be sold. This will be a very large auction with something for everyone. For a complete part number and description listing visit our website www.starmanauctions.com click on upcoming auctions and scroll down to Raytheon Aircraft.

TERMS: Cash, Certified Funds, or Company Check ONLY if accompanied by Bank Letter of Guarantee!! NO EXCEPTIONS! Wire Transfers will be accepted with a 20% non-refundable deposit day of sale. We also accept MasterCard and Visa. A 3% Buyer's Premium will apply to this auction. If payment is Cash, Check, Certified Funds or Wire Transfer the 3% Buyer's Premium will be waived.

ELECTRICAL & LIGHTING INVENTORY

Shielded Wire, Terminals, Fuses, Receptacles, Landing Light Assys., Resistors, Large Selection of Connectors, Multi Pin Connectors, Unshielded Wire Heat Shrink Tubing, Very Large Selection of Resistors, Capacitors, Micro Switches, Voltage Regulators, Dimmer Switches, Coax Cable Plugs, Connectors, Voltage Regulators, High Voltage Wire

ALUMINUM SHEETS & MISCELLANEOUS

Aluminum Tape, Phenolic Sheets, Several Sheets of Aluminum 4x12 Sheets Sizes Include .063, .250, Etc., Aluminum Bars, Aluminum Castings, Fire Sleeve, 1/2" & 3/16" Tubing

HARDWARE

Includes Large Selection of New Hardware NAS, MS, HiLock, Pins & Collars, BAC, AN, Bushings, Close Tolerance Bolts, Spacers, Machine Screws, Nut Plate, Solid Rivets, Inserts Blind Rivets, Rivnuts, Pins, Self-Locking Screws, Bolts, Washers, Screw Inserts, Hyd. Fittings Tees, Elbows, Clamps, Fastners, Rod Ends, Self-Locking Nuts, Clevis Bolts, Bearings

TRAVEL AIR & EARLY BONANZA

Baffle Clips, Baffles, Wheel & Brake Assys., Annunciators, Handles, Windows, Door Doublers, Skins, Door Trim

DUKE INVENTORY

Exhaust Stack, Brace Assys., Support Assys., Cowl Skins & Doublers, Hinge Halfs, Weld Assys., Nose Gear Orifice, Control Surface Doublers, Skins & Stiffners, Control Surface Tubes, Torque Tube Supports, Brackets, Interior Inv., Fuselage Skins, Nose Gear Door Inv., Fuel Ind.

LARGE SELECTION OF 50-SERIES NUMBERS

STARSHIP INVENTORY

BONANZA & A-36 INVENTORY

Brackets, Supports, Bushings, Windows, Weld Assys., Spar Cap Kit, Panels, Backshells, Prop Control Assy., Junction Box, Fuel Booster Pump, Cowl, Cowling Inv., Baffles, Cowl Skins, Nose Retract Rod Fittings, Main & Nose Gear Rods, Nose & Main Gear Door Skins, Windows, Bellcranks, Flap Assy., Hinges, Housings, Control Surface Brackets

BEECH KING AIR 99 & 1900 INVENTORY

Delce Boot Kits, Doublers, Covers, Door Skins, Brackets, EL Panels Fittings, Floor Boards, Rod Ends, Harness, Cowl Skins & Angles, Chair Assys., Avionics Box Assys., Vents, Avionics Panels & Install Inventory, Harness, Nav Lights, Relay Panels, Windows, Table, Webs, Angles, Supports, Seat Track, Sidewall Panels, Consoles, Freon Tubes, Delce Tubes, Main Wing Spars, Panels, Wire Kits, Cabinets, Actuators, Panels, Bond Assys., Firewalls, Etc.

AUCTIONEER'S NOTE: Starman Bros. Auctions has two upcoming auctions in the Wichita, Kansas area back to back. The first on C&S Industries in Viola, Kansas, offers a good selection of engine shop equipment and inventory. The second one Raytheon Aircraft is the first of three auctions this year with a very large selection of NEW Beechcraft inventory.

Everything sells "AS IS, WHERE IS" with no warranties implied or expressed. Neither the auctioneer nor owners shall be liable for any incorrect description, fault, or defect. Everything positively sells to the highest bidder. Payment must be made in full day of sale. No property removed until settled for. Auctioneer not responsible for accidents or stolen property. All counts are approximate.

TWO Upcoming



AUCTION ONE

SATURDAY – MAY 14, 2005

Starting At 9:30 A.M.

C&S INDUSTRIES Inc.

7420 A S. 199 St. West – Viola, Kansas
Directions: From Wichita Take Exit #5 (Hwy K-42) Exit off of I – 235 On S.W. Side of Wichita. Follow K-42 West/Southwest Ten Miles To 71 St. South Turn Right Go .8 Miles To 199 St. West, Turn Left Go .3 Miles. Building on Left Watch For Signs.

Sale Site Phone: 620-545-7129

AUCTION TWO

FRIDAY & SATURDAY –
MAY 20 & 21 2005

Starting At 9:00 A.M. Both Days Inventory Surplus To Ongoing Needs Of RAYTHEON AIRCRAFT
303 S. Greenwich – Wichita, Kansas
Directions: This address is on the South East Side of The Beech Airport. From Mid-Continent Airport Take Hwy 54 (Kellogg Rd) East Approx 11 Miles To Greenwich Turn Left. Watch For Signs.

Sale Site Phone: 316-676-3603

ABSOLUTE AUCTIONS

PRSR FIRST CLASS
U.S. POSTAGE
PAID
MAIL U.S.A.

FIRST CLASS

STARMAN BROS. AUCTIONS INC.

1240 Royal Drive • Papillion, NE 68046-2082
(402) 592-1933

www.starmanauctions.com

Return Service Requested

Airline Connections:

Airline Connections : For Both Auctions - Most Major Airlines into Wichita Mid-Continent Airport. For Auction 1 - C&S Industries Private Aircraft Should Also Land at Mid-Continent. Rental Cars are Available There. For Auction 2 - Raytheon Private Aircraft Can Land at Col. James Jabara Airport.

HOTELS

Auction One	Auction Two
These Hotels are Near Mid-Continent Airport	Raytheon Aircraft
Best Western Airport Inn 6815 W. Kellogg Wichita – 316-942-5600	Club House Inn & Suites 515 S. Webb Rd. Wichita 316-684-1111
Wichita Inn West 6335 W. Kellogg Dr. Wichita 316-943-2373	Fairfield Inn 333 S. Webb Rd. Wichita – 316-685-3777
Howard Johnson Express Inn 6575 W. Kellogg Wichita – 316-943-8165	Hampton Inn 9449 East Corporate Hills Dr. Wichita 316-686-3576
Days Inn 550 S. Florence St. Wichita 316-942-1717	Comfort Inn 9525 East Corporate Hills Dr. Wichita – 316-686-2844
	Residence Inn 411 S. Webb Rd. Wichita – 316-686-7331

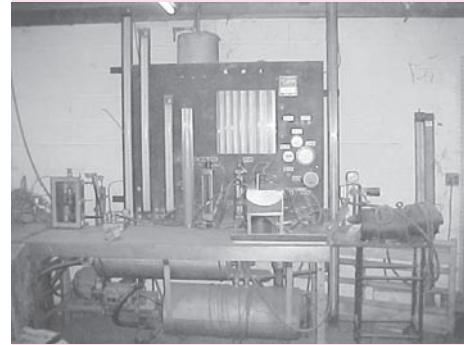
STARMAN BROS. AUCTIONS INC.
1240 Royal Drive • Papillion, NE 68046-2082
(402) 592-1933

STARMAN BROS. AIRLINE SERVICES, INC.
9000 NW 15TH STREET • MIAMI, FL 33172
(305) 477-6865
www.starmanauctions.com

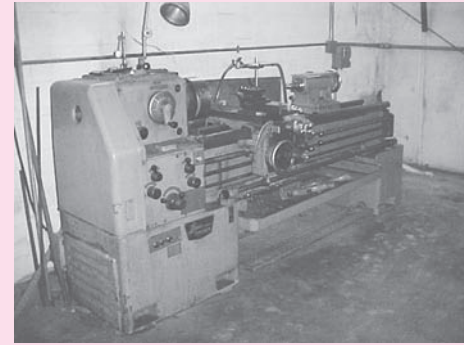
AUCTION ONE

C&S INDUSTRIES INC. – VIOLA, KANSAS – SATURDAY, MAY 14, 2005 • 9:30 A.M.

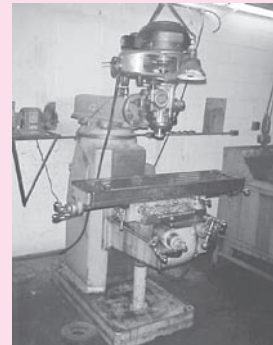
SHOP EQUIPMENT



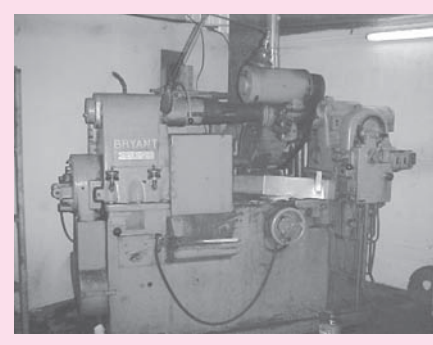
Stromberg-Meridian Aircraft Carburetor & Fuel Injection Flow & Test Bench Mdl. #D-20500 Flow Range 0-4000 lbs per Hour, Fuel Flow Meter 0-180 pph



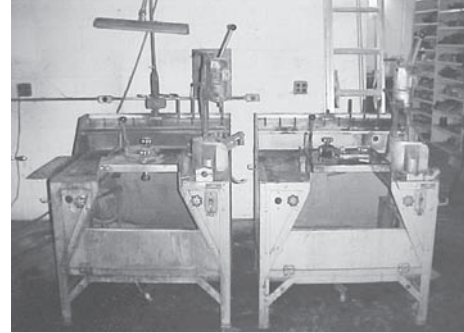
Logan Powermatic Lathe Mdl. TAL-430, 7' Bed, 16" Swing w/Power Feed, Live Centers, 3 Jaw Chuck, Steady Rest & Various Tooling, 40" Between Centers, Hollow Spindle.



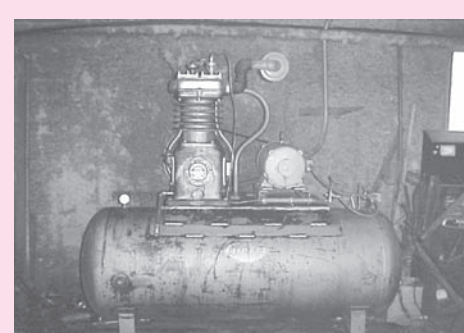
Tree Mdl. 2UV Vertical Milling Machine, Variable Speed, 1 HP Motor, 3 Phase, 10" x 42" Table, 140 To 3500 RPM Spindle Speed



Bryant Mdl. 16A28 Contour Grinder, Hole & Face Grinding, 28" Max Diameter, Max Grinding Travel 9", Max Diameter of Swing 14"



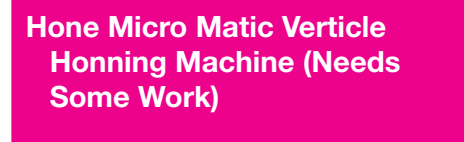
(2 ea) Sioux Mdl. 1680 Wet Cylinder Working Tables



Curtis 2 Stage, 20 HP Air Compressor 3 Phase Continental 12 Speed Heavy Duty Drill Press Mdl. Dp4 Delta Variable Speed Drill Press Columbia 3/4 HP Pedestal Grinder Delta 6" Belt Sander Bosch Mdl. 3814 Cut-Off Saw Walker Turner Radial Arm Saw (2 ea) Powercraft & Misc Table Saws Craftsman 4 Drawer Tool Chest Lincoln Mdl. 36-96 Battery Charger 1/2 Ton Electric Chain Hoist (8 ea) Bench Vices 4" & 6" Duntam-Bush AMPC-5 Air Conditioning Unit FAMCO #0 Arbor Press Silver Beauty Armature Crowler Allen Armature Magnetizer Red Arrow 20 Ton H-Frame Press Champion Spark Plug Cleaner Tester Rymac Valve Spring Tester UP Draft Paint Booth W/Rotating



VAPO-Kleen Heated Parts Washer Degreaser (2 ea) Allied Parts Washers Misc Solvent & Dipping Tanks



Hone Micro Matic Verticle Honning Machine (Needs Some Work)

HAND TOOLS

Lycoming Crankcase Spot Facing Tools
(9 ea) Cylinder Base Wrenches
Valve Spring Compressor
(5 ea) Cylinder Ball Hones
Torque Wrenches Inch Lbs 1/4 & 3/8 Drive
Sweeney 0-15 Ft Lb Torque Wrench Tester
Dial Indicators & Magnetic Bases
Lufkin Inside Micrometer Set
6" Calipers
Parker Mdl. 416 Hand Beading Tool Set
Slick Mag Tool
Tube Flaring Tools
Imperial Tubing Benders
Continental 110 Piece SAE & Metric Tap & Die Set
3 Jaw Pullers
Bearing Splitter

Slide Hammer
Misc Paint Guns
Milwaukee Paint Touchup Gun
Stewart Warner Hand Tach
Eico 955 Capacitor Tester
JBT Frequency Meters
Various Soldering Irons
Grease Guns
Tap & Die Sets
Bolt Cutters
(5 ea) Mechanics Creepers
Welding Rod, Flux & Supplies
Multimeters
Air Conditioner Recharge Manifold
Hand Tools To Include Safety Wire Pliers, Snap Ring Pliers, Chisels, Hammer, Misc Sockets, Combination Wrenches, Pneumatic Drill, Etc
Misc Shop Specialty Tools

VEHICLES



2000 Ford F-150 Lariat Pickup Extended Cab, Triton V-8, Auto Trans, w/Overdrive, Power Seats, Windows, Locks, Air Conditioning, Leather Interior, CD, Tool Box, Bed Liner, Running Boards, 36,800 Miles



Wheel Horse D-250 Lawn Tractor W/60" Deck, 40" Tiller Attachment, PTO & 3 Point, Needs Engine Work Montgomery Ward Lawn Tractor, 18 HP, 42" Cut Marquette Mdl. 13-105 AC Welder Generator W/ ONAN, 2 Cyl, Gas Engine Engine Run Up Truck, Engine Run Up Stand Mounted on Back of Pickup w/ Control Panel in Cab

AUCTION ONE

C&S INDUSTRIES INC. – VIOLA, KANSAS – SATURDAY, MAY 14, 2005 • 9:30 A.M.

CYLINDERS



Reconditioned Cylinders
(6) Lyc. 0-235/290 O/H Cylinders
(5) Lyc. 540 O/H Cylinders
(5) Lyc. 0-320 O/H Cylinders
(5) Lyc. IO-360 O/H Cylinders
(5) Lyc. 030-H2AD O/H Cylinders
(5) Cont. 470/520 O/H Cylinders

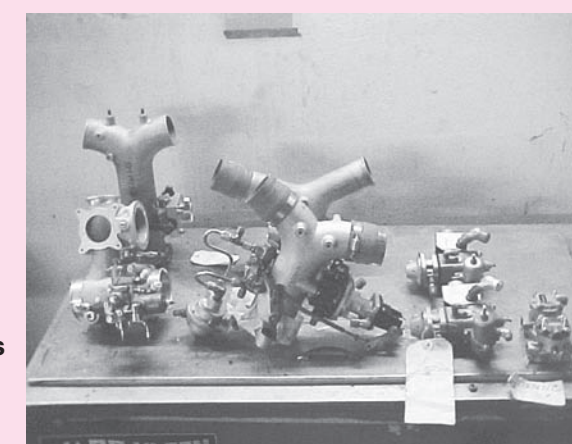
Cylinder Cores
(30) Cont. 470/520 Cylinder Cores
(15) Cont. 65/85 Cylinder Cores
(30) Lyc. 320/360/540 Cylinder Cores
(5) Lyc. 290/235 Cylinder Cores

ACCESSORIES & INVENTORY

(8 ea) Magneto Cores: Slick & Bendix
Slick & Bendix Magneto Inv.: New & As Removed : Impulse Couplings Coils, Gears, Magnets, Bushings, Harness, Housings, Etc.
(10 ea) Starter Cores: Bendix & Prestolite 12 x 24 Volt. 100 Amp Alternator Core:
Alternator Drive Couplings
KD Alternator Bushing Install Kit
Misc. Starter & Generator Housings & Armatures
(12) Oil Cooler Cores: Cont. & Lyc.
Oil Cooler Backing Plates
(6) Right Angle Starter Drive Cores
(24) Right Angle Starter Drive Housings
Right Angle Starter Drive Gears
(4) Continental Oil Pump Cores
Continental Oil Pump Housings
MA 4-5 & PS-5C Carburetor Cores
(5) Turbo Charger Cores & Waste Gate
(2) New Cont. Press. Regulators P/N 642100
Misc. Fuel & Hyd. Pump Cores

FUEL INJECTION INVENTORY

(5) New & Overhauled Cont. Fuel Injection Pumps
(10) Cont. Fuel Injection Pump Cores
(10) Cont. Fuel Injector Cores
(10) Cont. Fuel Injection Flow Dividers
(4) New or O/H Cont. Fuel Injection Throttle Bodies w/Injectors
(16) Cont. Fuel Injection Throttle Bodies Most w/ Injectors
New Cont. Throttle Body & Injector Assy. P/N 64387
Several Primer Lines
Fuel Injection Inventory: Includes New & As Removed Metering Shafts, Manifold Valves, Injection Nozzles, Metering Arms, Hardware, Data Plates, Etc.



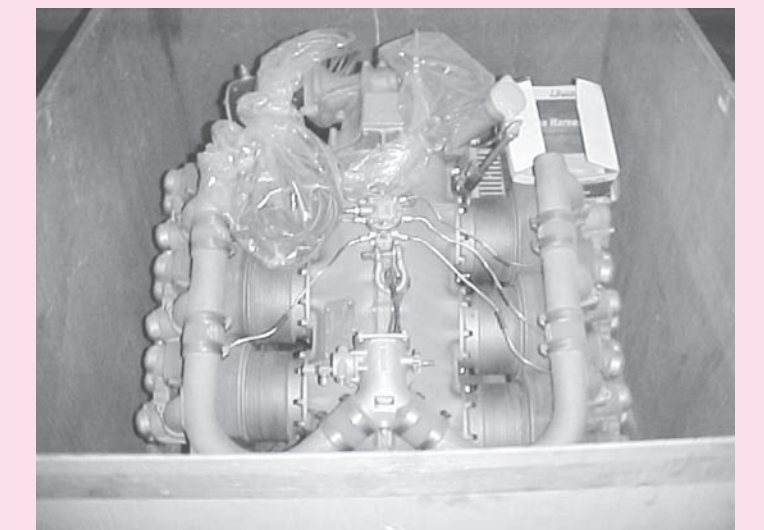
CRANKCASES & CRANKSHAFTS

(5 Ea.) Cont. 470/520 Crankcases
Lyc. 4 Cyl. Crankcase
(7) Cont. 6 Cyl. Crankshafts
(2) Cont. 65/85 Tapper & Flange Crankshafts
(7) 4 & 6 Cylinder Cam Shafts

OFFICE EQUIPMENT & MISCELLANEOUS

Pepsi Bottle & Can Soda Machines; Various Office Desks & Chairs;
(4) Four Drawer Metal File Cabinets; (33) Cases of Chem Tabs Battery Treatment Capsules; Several Electric Motors; Building Maintenance Supplies to Include Nails, Bolts, Nuts, Screws; Various Exhaust; Engine Mounts

ENGINES



Cont. IO-360-DB Overhauled Engine w/All Accys. (Subject To Prior Sale Call First); Cont. IO-520-F Engine Core w/Accys; Cont. 0-470-LCK Disassembled Engine Core; Engine Cores: Cont. 0-300, Cont. TS10 520-H, Lyc. IO-320, Lyc. IO-360; Cont. 470 Display Engine w/Stand; Cont. IO-470 Display Engine w/Stand

ENGINE INVENTORY

Lyc. Accy. Cases, Several Continental Cross Over Tubes, Large Selection of Cont. Intake Tubes (New & Used), Several Cont. Oil Pans, Accy. Mounts, Connecting Rods, Internal Gears, Push Rods & Housings, Rocker Arms, Bearings, Counterweights, Lordmounts, Valve Springs, Valves, Piston & Rocker Arm Pins, Valve Spring Seats, Oil Pump Gears, Engine Legs, Vernatherms, Engine Baffling, 540 Oil Sump, Oil Filter Adapters, GTSIO Rocker Box Covers, Hardware, New & Used Valves, Seats & Guides

PISTONS

Large Selection of Used Lyc. & Cont. Pistons

NEW CONTINENTAL INVENTORY

Piston Rings, Engine Legs, Accy. Mounts, Valves, Hardware, Gaskets, Small Inv.

CYLINDER INVENTORY

New & Used Cont. & Lyc. Valves, Valve Seats, Guides, Etc.

PROPELLERS & INVENTORY

New McCauley 3 Bladed Prop., Mdl. P4014808-06 w/Spinner
McCauley Mdl. 2A34C Constant Speed Prop.
McCauley Prop. Hub
Wood Prop. Hub, Spinner & Backing Plates, Prop. Governors

MANUALS

100+ Manuals to Include: Cont. & Lyc. Overhaul & Parts Manuals for VO-360, VO-540, VO-435, TIGO-541, O-360, GTSIO-520, TSIO-520, O-470, IO-520, W-670, Etc. Cont. Fuel Injection Manuals, Cessna Manuals Include 300/400 Series, C-182, 188, 206, 337. Including Accy. Manuals, Charging Systems, Etc.
Misc. Microfiche Readers

SALVAGE CARS

'76 Ford F-150 Ranger XLT Pickup, 2 WD, Auto
'61 Chevy C-10 Custom Pickup, V-8
'87 Chevy Corsica
'76 Ford Granada, 2 Dr., 6 Cyl.
'86 Olds Tornado, V-6
'81 Ford Escort Wagon, 4 Cyl.
'65 Buick LeSabre, 4 Dr., Auto



AUTO PARTS & SALVAGE

Several Ford Transmissions, Ford V-8 Engines & Blocks, Radiators, Heads, Rear Ends, Wheels, Intake, Radios. Good Selection of Iron & Aluminum Salvage Piles

BENCHES, CABINETS, RACKS, ETC.

(10+) Metal & Wood Shop Benches, Various Sizes; Good Selection of Metal Shelving; 2-Door Fire Proof Cabinet; (5) Roll-A-Round Engine Parts Racks w/3&4 Shelves; Barrel Dollies; Several Sheets of 3/8" Plywood 4x4 & 4x8; Roll-A-Round Parts Carts; Misc. 2-Door Metal Cabinets; Good Selection of Metal Shelving

STAR MAN BROS. AIRLINE SERVICES, INC.
9000 NW 15TH STREET ■ MIAMI, FL 33172
(305) 477-6865

STAR MAN BROS. AUCTIONS INC.
1240 Royal Drive ■ Papillion, NE 68046-2082
(402) 592-1933