



FRIDAY, JULY 14, 2006 • Starting at 9:00 A.M.

**Equipment Surplus to Ongoing Needs of
BOMBARDIER LEARJET**
7761 West Kellogg Dr., Bldg. #11 – Wichita, Kansas
Directions: The entrance to Building #11 is off the Frontage Rd. that runs along the south side of Kellogg. Just on the north side of Wichita Mid-Continent Airport.

ABSOLUTE AUCTION
NOTE: A 5% Buyers Premium Will Apply To All Purchases At This Auction.

**SALE SITE PHONE
316-946-3549**

PRSR FIRST CLASS
U.S. POSTAGE
PAID
MAIL U.S.A.

FIRST CLASS

AIRLINE CONNECTIONS
Most Major Airlines Serve Wichita Mid-Continent Airport
All Private Aircraft Can Land There Also. Rental Cars Available At Airport.



HOTELS

Best Western Airport Red Coach Inn 6815 W. Kellogg Dr. Wichita, KS 316-942-5600	Wichita Inn 6335 W. Kellogg Dr. Wichita, KS 316-943-2373	Howard Johnson Inn & Suites 7575 W. Kellogg Dr. Wichita, KS 316-943-8165
Hilton Wichita Airport 2098 Airport Rd. Wichita, KS 316-945-5272		Quality Inn 600 S. Holland St. Wichita, KS 316-722-8730

STARMAN BROS. AUCTIONS INC.
1240 Royal Drive • Papillion, NE 68046-2082
(402) 592-1933
www.starmanauctions.com
Return Service Requested

STARMAN BROS. AIRLINE SERVICES, INC.
9000 NW 15TH STREET • MIAMI, FL 33172
(305) 477-6865
STARMAN BROS. AUCTIONS INC.
1240 Royal Drive • Papillion, NE 68046-2082
(402) 592-1933

MACHINE & SHOP EQUIPMENT

Bridgeport Series II CNC Vertical Milling Machine 4 HP, 3 Phase, Spindle Speed: 50-3500 RPM, Power Knee & Table, Rapid Travelease, Power Quill Feed, AcuRite Master MPXY Digital Readout, Table: 11" x 58", 3-T Slots, Table: 30" Axis Travel, 15" Y Axis Travel, Knee 16" Travel, Quill 5" Travel



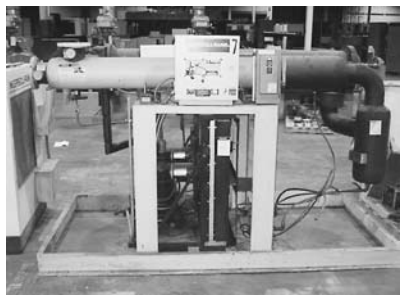
(4 ea) Ramilbit Vertical Milling Machine, 3 HP Motor, Spindle Speeds, Low Side 60-500 RPM, High Side 500-4200 Spindle Speeds, 10" x 50" 3-Slotted Table



Piranha Mdl. P1165 Ironworker, 10 HP Drive Motor, Work Surface Platen 11" x 38", Coping 15" x 15", 65 Ton Cap



Ingersoll-Rand Mdl. SS Rep 50 Rotary Screw Air Compressor, 50 HP Motor, Water Cooled, S/N #2861



Ingersoll-Rand Mdl. DXR1500A Compressed Air Dryer, Max Pressure: 150 PSIG
Gardner Denver Mdl. ESJ Electra-Screw Air Compressor



Kearney & Trecker Milwaukee Mdl. D No. 2 Horizontal Milling Machine
Parlec Mdl. Parsetter 260 Tool Measuring Machine X & Z Axis Digital Readout



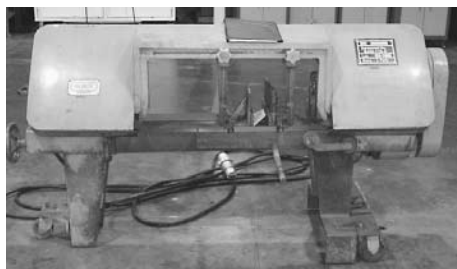
Conrac Mdl. 2CP Tubing Flaring Squaring, Burring Machine 1 HP Motor, 2-Speed Spindle, Pneumatic Jaw



Clausing 15" Metal Lathe, 15" Swing 62" Bed, 1 7/8" Hollow Spindle w/Several Attachments



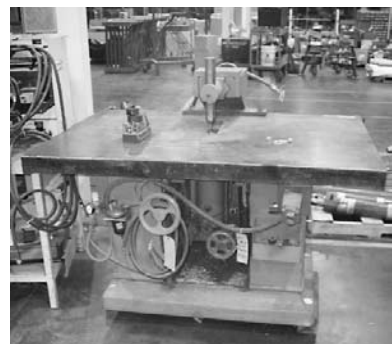
(2 ea) Clausing Mdl. 2276 Variable Speed Drill Presses, Spindle Speed: 150-2000 RPM
Powermatic Mdl. 1150 Variable Speed Spindle Speed: 250-5300 RPM Drill Press
Clausing Mdl. 1771 Variable Speed Drill Press Spindle Speed: 300-4000 RPM
Rockwell & Continental Variable Speed Heavy Duty Drill Press
Ingersoll-Rand Type 30 Air Compressor Mdl. 244 5 HP, 3 PH, Dual Stage Horizontal Tank



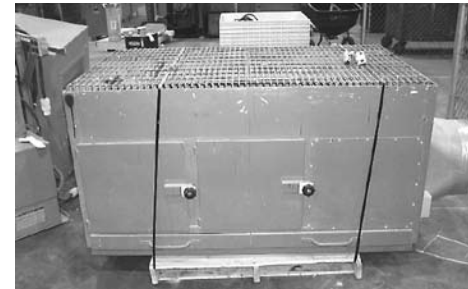
Kalamazoo Mdl. 1220-D Horizontal Metal Cutting Saw
PHI Mdl. 420 Hyd. Tubing Bender 11' Table
America Industries Mdl. AC20-3-R25-2 Pass Hyd. Power Unit, Operating Pressure 300 PSI
Evrett Industries Mdl. 12MA Hose Cutoff Saw, 3 PH, 3 HP Motor
Doall Mdl. D-8 Surface Grinder w/Electro Magnetic Chuck 8" x 24"



Chevalier Mdl. FCG-714L Tool Grinder



Orton Router w/40" x 60" Table
Dayton 20" Disk Grinder



(2 ea) Denray Down Draft Tables
Air Flow Systems Mdl. DT-3000-AC_PG-7 Down Draft Table; 24" x 64"
Delta Mdl. 40-601 Scroll Saw 18" Throat
Craftsman 10" Benchtop Drill Press
Craftsman 6" Disc & 1" Belt Sander
Large Selection of Bench Grinders
Large Selection of Bench Vises
Hammond Mdl. 3-VR0L-C Polishing & Buffing Lathe, 3 HP, 3-Phase, 1500-3000 RPM
50 Ton H Frame Hyd. Press

AIRCRAFT JACKS & MAINTENANCE EQUIP



(3 ea) Tronair Mdl. 02A7845-0111, 20,000 Lb., 30" Air Over Hyd. Aircraft Jacks
(1 ea) Tronair Mdl. 02A1032-0110, 20,000 Lb., 30" Air Over Hyd. Aircraft Jacks
(1 ea) Tronair Mdl. 02A7837-0110, 10,000 Lb., 40" Air Over Hyd. Aircraft Jack
(2 ea) Tronair Mdl. 103-100, 20,000 Lb., 34" Aircraft Jacks
(2 ea) Tronair Mdl. 02-1032-0100, 20,000 Lb., 30" Aircraft Jacks
(3 ea) Tronair Mdl. 02-0522-0132, 10,000 Lb., 24" Aircraft Jacks
(1 ea) Tronair Mdl. 02-1248-0100, 24,000 Lb., 48" Aircraft Jack
(1 ea) Tronair Mdl. 02-7812-0110, 10,000 Lb. High Wing Aircraft Jack
(1 ea) Tronair Mdl. 03-5822-0000 Fuselage Support Stand



(2 ea) Flow Master Mdl. 200 Aircraft Air Test Carts w/Digital Readouts



(2 ea) General Electro Dynamics Mdl. AN60-MS Static Wheel Weighers (Electronic Scales) 60,000 Lbs. each, (3 ea) Platforms



Tronair Mdl. 05-3005-110082, 5,000 Lb. Hyd. Mule, 5606 Fluid, Motor Burnt Out



Tronair GPU Mdl. 11-6608-1007, Peak Amp 2000, Rated Amps 500, 30KVA



United Mdl. SM_80, 8,000 Lb. Tow Tractor, 6 Cyl. Gas



(2 ea) Hydraulic Mules (Skydrol) (1) Is 20 G.P.M. at 5000 PSI w/Dual Output (1) Is 10 G.P.M. at 5000 PSI Single Output
Cox & Stevens Electronic Aircraft Scales w/4 ea 1000 Lb. Cells
(2 ea) Tronair Jack Extensions
Nicaid Battery Lift

SHEET METAL EQUIPMENT & SAWS



Cincinnati No. 18 12' Power Shear w/Power Back Gauge, Rapid Traverse, Hyd. Hold Down System, Power Material Table



Chicago 8' Mdl. 1011 Sheet Metal Break

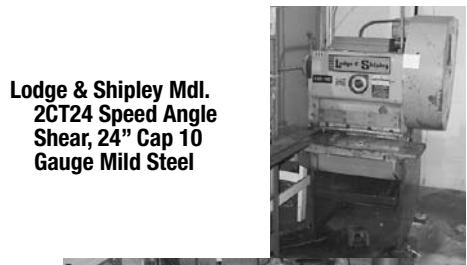


Marvel Series 8 Vertical/Horizontal Band Saw, 19" Throat



Kaltenbach Mdl. KKS400H Cold Circular Metal Saw, S/N NR54683

(2 ea) Powermatic Mdl. 87 Vertical Band Saws, 20" Throat w/Blade Welder & Tilttable Table



Lodge & Shipley Mdl. 2CT24 Speed Angle Shear, 24" Cap 10 Gauge Mild Steel



Pexto Mdl. 416E, 36" Sheet Metal Slip Roller, 16 Gauge Cap
36" Bench Top Finger Brake

(2 ea) Powermatic Mdl. 143 Vertical Band Saws, 14" Throat
MSC Mdl. 09514613 Band Saw 14" Throat w/Blade Welder & Tilttable Table
Ramco Mdl. DY500 Electric Vertical Band Saw, 19" Throat w/Blade Welder & Tilttable Table
Chicago Pneumatic Alligator Rivet Squeezer Mounted on Stand

NOTE:
A 5% Buyers Premium Will Apply To All Purchases At This Auction.



LIFTS & STANDS



Genie Mdl. Z-45/22 Electric Boom Lift, Work Load 500 Lb., Platform Height 45'
Genie Mdl. Z-30/20 HD Electric Boom Lift, Max Load 500 Lbs., Platform Height 31'



(2 ea) Lift-A-Loft Mdl. SPW19-15 Air Scissor Lifts, 19' High, 1200 Lb. Lift



(7 ea) Electric Pallet Lifts To Include: Big Joe, Blue Giant, Presto, Rsl-Lift
7' Cotterman Roll-A-Round Maintenance Stand



B1 Maintenance Stand
B4 Maintenance Stand



Several Aircraft Maintenance Platforms



Challenger Aircraft Maintenance Platforms
Several 2', 3', 4', 5' & 6' Maintenance Stands & Steps



(4 ea) Electric Personal Lifts For Riveting Top of Fuselage-Challenger Aircraft



SHOP TOOLS

(34 ea) Kurt Milling Vices, Several 8 Channel Thermo Strip Chart Recorders, Rotating Milling Tables, Collets, Boaring Bars, All Sizes & Shapes of Drill Bits, Reamers, Flashlights, Hearing Protectors, C-Clamps, Milling Trees, Welding Clamps, Cutters, End Mills, Milling Cutters, Headsets, Shop Floor Rivet Caddies, Sheet Metal Clamps, Files, Clecos, Dead Blow & Brass Hammers, Counter Sinks, New Accu-Rite Linear Encoders for Digital Readouts, Acc-Rite A-R/5 Scales

PALLET RACKS, SHELVING, BENCHES, ETC.



Pallet Racking, Very Large Selection of New & Used Heavy Duty Pallet Racking, 42" & 48" Deep, 16' High; 8' & 9' Sections



Large Selection of Equipto Metal Shelving w/18" & 24" Shelves
Misc Rollaround Scaffolding
Very Large Selection of Metal & Plastic Parts Bins
Enclosed Inventory Racks
(3 ea) 2-Door 6' x 6' Storage Bins On Wheels
Stanley Vidmar Cabinet
Several Hardware Cabinets

(9 ea) 2-Door Metal Storage Cabinets
Several Cabinets, Foreman Stands, Etc.
(6 ea) Foreman Stands
(1 ea) 14 Pigeon Hole Parts Bin
(7 ea) 5' x 2 1/2' Metal Work Tables
(1 ea) 5' x 6' Work Table
(2 ea) Mechanics Metal Work Bench
(2 ea) Formica Top, 10' x 3' Shop Benches
(6 ea) Wood Work Tables 12' x 3'
Misc Cabinets



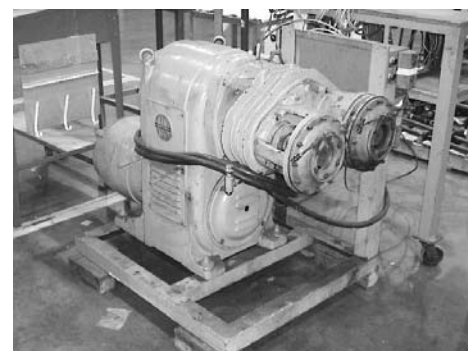
Large Selection of Control Surface & Raw Stock Racks-Some On Wheels



MISC. SHOP EQUIPMENT



Cetco Mdl. CE-200 GM, Manual Waste Water Treatment System
Misc. Commercial Sewing Machine Parts
Garrett Engine Modular Rotating Stand
Spectra Dynamics Trim Balance Analyzers
Electric Parts Cleaner
(30 ea) Brunson & K&E Transits
TSI Mdl. 1650 Air Velocity Meter
Lincoln 250 Amp Arc Welder
Craftsman 6' Wood Planer
(2 ea) Oxygen Acetylene Torch Carts
Platform Scale
Balance Beam Scale
Nitrogen Cart
Several Shop Vacs
Sand/Salt Spreader
Large Selection of Fire Extinguishers
Racal Mdl. 5H-1409 1" Tape Recorder w/1 Tape
Degausser & 25 ea 1" Reels
Thermocouple Calibrator-Simulators
Portable Atmospheric Monitors
Shop Lights, Air Hoses & Extension Cords



US Motors Doublehead Veri Drive, 30 HP
Versitron Rockwell Mdl. AT130-T Column Stand
Hardness Testers
Aldonex Mdl. MP-440-2B DC Power Supply AC Input, 3 HP, 440 V, DC Output, 200 Amps, 0-40 V
(2 ea) UPS Switches
Rigid Mdl. 535 Pipe Cutting & Threading Machine w/Attachments
Dust Kop Mdl. 1151 Dust Collector
(5 ea) DeMag Mdl. PK5NZ 1 Ton Electric Chain Hoists
(1 ea) P&H 2-Ton Electric Chain Hoist
(1 ea) 2-Ton Electric Hoist
Meteor 1/2 Ton Electric Chain Hoist
(5 ea) 1/2 Ton Electric Chain Hoists: Yale, Budgit & Coffing
Misc Other Pneumatic & Electric Chain Hoists
(2 ea) OMI 2 Ton Overhead Crane Monorails; 36' Long
(2 ea) Accro 2 Ton Overhead Crane Monorails; 36' Long
PAFF Mdl. 1245 Commercial Sewing Machine
(3 ea) Hyd. Hand Pumps
Automatic Hardware Counter, Bagger & Labler

AVIONICS

(2 ea) Bendix King KAU-461 AHRU's
Bendix King Mdl. DM1411-441B DME Transceiver
(2 ea) Bendix King Mdl. VC-401B VHF Transceiver
(2 ea) Bendix King KDC-481 Air Data Computers
(5 ea) Bendix King Mdl. ED-551A Electronic Displays
(2 ea) Bendix King MST-67A Transponder Receivers
(2 ea) Bendix King SG-465 Symbol Generators
(1) Bendix King Mdl. TPU-67A Transponder Receivers
Bendix King SU-463 Switching Unit

(2) Honeywell Mdl. 6600207-57 Cabin Press Control Units
Bendix King ART 2000 Radar Antenna Receiver, Transmitter
(1) Bendix King Mdl. SG-465 Symbol Generator
Bendix King DF-413B ADF
(7 ea) Electromech Tech. Mdl. EM2079-15 Aircraft Pitch Trim Speed Computers
Misc. Control Heads
(4) MPC Products Mdl. 1971012R6205B Rudder Trim Rotary Actuators
Skid Control Breaking Boxes
Misc. Static Inverters
(4) Bendix King AT-434A ADF Antennas
Lamp Dimmers

OFFICE EQUIPMENT

(152 ea) 60" Double Pedestal Oak Laminated Desks, Several w/Credenzas
(131 ea) 60" Double Pedestal Metal Desks, Some w/Credenzas
(330 ea) Office Chairs, Medium & Low Back Secretarial & Task, To Include Harman Miller, Hon, Global, Etc.
(12 ea) Oak Laminated Wood Worktables
(77 ea) 4-Drawer Filing Cabinets, To Include Hon, Steel Case, Devon, Anderson, Etc.
(3 ea) 4-Drawer Lateral Filing Cabinets
(56 ea) 2-Drawer Filing Cabinets
5-Drawer Lateral Filing Cabinet
(195 ea) 3' Bookshelves, Wood & Metal To Include Borroughs & Hon
(112 ea) Salesman Desks, Mfg. Marves
(39 ea) Computer Printer Tables
Misc Modular Desks
(13 ea) Hamilton Drafting Tables
6' x 4' Wood Work Table
4 Section Wood Hutch
Several Formica Top Office Side Tables, Various Sizes
(1 ea) 4-Door Uniform Locker, Mfg. Lyon
(1 ea) 7' Wood Book Shelf
Several Computers, Monitors, Scanners, Etc.
HP Laser Jet Printers



NOTE:
A 5% Buyers Premium Will Apply To All Purchases At This Auction.

STARMAN BROS. AIRLINE SERVICES, INC.

9000 NW 15TH STREET ■ MIAMI, FL 33172
(305) 477-6865

STARMAN BROS. AUCTIONS INC.

1240 Royal Drive ■ Papillion, NE 68046-2082
(402) 592-1933

MISCELLANEOUS

(2 ea) MTD Mdl. 8/26 Walk Behind Self Propelled Snow Blowers 6-Speed Tecumseh 8 HP Gas Engine
 (1 ea) MTD Mdl. 8/24 Walk Behind Self Propelled Snow Blower 5-Speed Tecumseh Engine
 Econo Electric Cord Rewind Reel
 (2 ea) Water Hose Rewind Reels
 Large Selection of Handheld Radios w/Chargers, Majority are Kenwood
 Several Spools of Building Wiring & Cable
 Large Selection of Electrical Motors; 1 HP to 40 HP
 Large Selection of New Lighting Fixtures

New Oak Solid Core Interior Doors
 Misc. Wood & Metal Doors & Frames (As Removed)
 Several Hyd. Cylinders
 Wind Socks & Frames
 (5 ea) Shop Bicycles
 New Dome Security Mirrors
 Various Shipping Containers
 Misc. Cushman Carts (Need Work)
 (1 ea) US Range, 6 Burner Gas Commercial Stove
 Hobart Mdl. CG41 Electric Grill 48" W, 24" D
 Blodgett Mark V Double Convection Oven

NEW ALUMINUM SHEET METAL

(Approx. 460+) Sheets of New Sheet Metal Most All Sheets Are 4' x 8' to 12 Long. Sizes Include: 2024-.025, .100, .200, .050, .160, .090, .020, .016, .080, .040, 6061-.063, .016, .090, .050, & 7075-.063, .080, .032, .090, .071, .125, .020, .040



LEATHER HYDES, CARPET, FABRIC & INTERIOR INV.



Large Selection of Full & Partial Leather Hydes, Several Rolls of Ultra Suede & Head Liner Material, Rolls of Fabric, Carpet Remnants, Carpet & Fabric Thread, Window Shade Material, Floor Runners, Good Selection of Vinyl, Seals & Sealants, Etc.



JET A FUEL TRUCK



1950 IH Cargostar 5000 Gal Jet A Truck, Steel Lines Tank, Caterpillar Engine, Auto Transmission, Single Pump Filter & Meter, Single Point Nozzle, 300 G.P.M., Top & Bottom Load, Fuel & Defuel Capable



AUCTIONEER'S NOTE: Bombardier Learjet has generated a large amount of surplus at their Wichita Facility and they have contracted with Starman Bros. Auctions to liquidate all this surplus at Public Auction. This auction contains a good selection of shop & ramp equipment, pallet racking, & office equipment as well as a very large amount of raw stock, sheet metal & new inventory.

Everything sells "AS IS, WHERE IS" with no warranties, implied or expressed. Neither the auctioneer nor owners shall be liable for any incorrect description, fault, or defect. Although all information is deemed to be from reliable sources prospective buyers are urged to inspect all items prior to bidding. Everything positively sells to the highest bidder. Payment must be made in full day of sale. No property removed until settled for. Auctioneer not responsible for accidents or stolen property. All counts are approximate.

PAYMENT TERMS

Cash, Cashiers Checks, Travelers Checks, Certified Funds or Company Checks ONLY IF ACCOMPANIED BY BANK LETTER OF GUARANTEE!! NO EXCEPTIONS!! Wire Transfers Will Be Accepted With a 20% NON-REFUNDABLE Deposit Made in One of Forms Listed Above. We Also Accept MasterCard & Visa. There is a 3% Processing Fee on Credit Cards. A 5% Buyers Premium Will Apply To All purchases At This Auction. Everyone Must Make Full Settlement Day of Sale.

RAW STOCK & NEW PRODUCTION INVENTORY



1000's of Feet of New Aluminum Extrusions, Titanium Sheets, Inconel Sheets, Large Selection of 4130, Chrome Moly Tubing, Large Selection of Aluminum & Steel Tubing, Several Thousand Feet of Round & Flat Aluminum Bars, Several Sheets of Phenolic, Stainless Steel Tubing, (300+) 26" x 26" Honeycomb Sheets 1 1/4" Thick, 8' Sheets of 3/8" Honeycomb, Several 3' x 10' Sheets of Stainless Steel, Solid Steel Bars, Sheets of Wire Mesh, Several Sheets of Teflon, Hinge Stock & Hinge Pin, Neoprene, Rubber Sheets Sound Proofing Foam Sheets, Silicone Sponge, Fiberglass Cloth, Foam Rubber Sheets, 12' Steel Bars, Several Rolls of High Temp Fiberglass Vinyl Tubing, Spiral Wrap, Several Cases of Scotch Film, Velcro, Teflon Sheeting, Several Kaydex Sheets, Good Selection of Thin Wall Teflon Conduits, 3M Sandblast Stencils (Several Cases), Heat Shrink, Large Selection of High & Low Pressure Hose, Polycarbon Sheets, 8' sheets of Sound Proofing, Aluminum Castings (6 Crates), Seals & Sealants, Several Cases of New Paint, Large Roll of Battery Cable, Note: There is a Large Selection of All The Above.



Approx. 500+ Spools of New Aircraft Wiring All Sizes.

NEW ELECTRICAL CONNECTORS

Several Thousand New Electrical Connectors: Brand Names Include Deutsch, Airtechniques, APH Etc. Cannon Plugs, Pin lug Connectors, Pins, Backshell Fittings, Plastic Connectors, Electrical Wire w/Connectors Connector Plugs, Electrical Connectors, Etc., Circuit Breakers

NEW HARDWARE & MISC. INVENTORY

Very, Very Large Selection of New Hardware To Include NAS, MS, AN, Bolts, Nuts, Washers, Screws, Grommets, Nutplate, O-Rings, Adel Clamps, Hose Clamps, Hyd. Fittings, Reducers, Circuit Breakers, Adaptors, Bushings, Hi Locks, Cherry Rivets, Solid Rivets, Blind Rivets, Spacers, Cotter Pins, Fasteners, Collors, Deutsch Permaswedge, Shear Pins, Terminals, Lock Washers, Blind Fasteners, Cherry Max Rivets, Etc. For Complete List By Part # Of Connectors & Hardware Visit Our Web Site at www.starmanauctions.com and click on Upcoming Auctions.

NOTE:

A 5% Buyers Premium Will Apply To All Purchases At This Auction.

STARMAN BROS. AIRLINE SERVICES, INC.

9000 NW 15TH STREET ■ MIAMI, FL 33172
 (305) 477-6865

STARMAN BROS. AUCTIONS INC.

1240 Royal Drive ■ Papillion, NE 68046-2082
 (402) 592-1933

PROXY BID

If you cannot attend this auction we will bid on your behalf. For Information call Starman Bros. at 402-592-1933 or go to our web site www.starmanauctions.com and click on Upcoming Aucitons, Then scroll down to Proxy Bid Form.

REMOVAL & RIGGING

Once an item is sold, the winning bidder is responsible for its removal. Any cost, responsibility and risk of removal of purchases remain with the purchaser. Removal may begin after payment in full and must be completed by the posted deadline. NO EXCEPTIONS OR EXTENSIONS. Starman Bros. Personnel & Various Rigging Companies will be on site to offer quotes and or do loading. Any riggers used by the purchaser will be required to provide a Certificate of Insurance. It will be the purchaser's/riggers responsibility to restore/repair all real or personal property that is altered or damaged as a result of the removal.