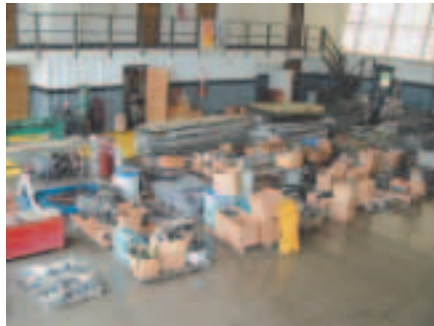


## DC - 3/C-47 INVENTORY

Fuselage Tunnel Cover Doors, Wing Spars, Skins, Rudder Hinge Plates, Floor Panels, Hinge Halves, Angles, Control Surface Push Pull Rods, Bulb Angles, Channel  
 Wing Flap Link Mechanisms, Wing Rudder Mechanic, Hinge Tab Brackets, Eye Bolts, Aileron, Rudder and Elevator Eyebolts, Rudder Hinge Brackets, Rudder Pedal Splines, Elevator Cable Brackets, Elevator Hinge Assys., Tab Brackets  
 (3 Ea.) C-47 Cargo Doors Complete (Front and Rears)  
 (3 Ea.) Vert. Stabilizer De-Ice Boots (New)  
 Landing Light Lens  
 Front RH Window  
 Main and Auxiliary Fuel Tank Sump Adaptors  
 Main Fuel Tank Saddle Assy.  
 Fuel Tank Filler Necks  
 Fuel and Oil Caps  
 Main and Aux. Fuel Tank Filler Neck Seals  
 Main Gear Bushings  
 Windshield Wiper Arms  
 Prop Blade Bearings  
 Oil Cooler Support Brackets  
 Rudder Pedal Supports  
 Rudder Stop Hinges  
 Control Surface Cables  
 Prop Governor Pulleys  
 Prop Governor Cables  
 Prop Pitch Cables  
 Tab Control Drums  
 Prop Control Guards  
 Prop Governor Brackets  
 Prop Governor Bracket Assys.  
 Swivels  
 Anti-Drag Brackets  
 Angles  
 Bushings  
 Brackets



Full Set of Control Surface Envelopes  
 Rubber Door Seal  
 Placards  
 Seat Channels  
 (11 Ea.) DC-3 - C-47 Door Steps  
 Good Selection of DC-3 Passenger Seats  
 DC-3 Radome  
 DC-3 Lower Nose Cowl  
 DC-3 Hamburger Doors  
 (2 Ea.) DC-3 Escape Hatches  
 (3 Ea.) DC-3 Emergency Exit Windows  
 (8 Ea.) Avionics Bay Doors  
 Several Rudder and Elev. Horns  
 (4 Ea.) DC-3 Tail Cones  
 Control Surface Pulley Brackets  
 Inspection Covers  
 Sev. Oil Cooler Brackets  
 DC-3 Control Column  
 Hyd. Reservoirs  
 DC-3 Rudder Pedal Assys.  
 Sev. Rudder Pedals  
 DC-3 Jump Seats  
 DC-3 Cock Pit Seats  
 Throttle Control Valve Cranks and Supports  
 Geared Rudder Valve Crank Assys.  
 Exhaust Mount Brackets  
 Battery Boxes  
 De-Icer Boot Strips  
 Control Surface Locks  
 Several Engine Mounts  
 Dish Pans

## MANUALS

Misc. DC-3, Pratt & Whitney, King Air, Bell 206, Allison Engine, Etc.

### PRIVATE TREATY SALE

The entire 135 Certificate for First Flight Out Inc. is available for sale. It would include manuals, etc. For more information on the Certificate call Starman Bros. Auctions Inc., 402-592-1933 and ask for Steve.

**TERMS:** Cash, Certified Funds, or Company Check ONLY if accompanied by Bank Letter of Guarantee!! NO EXCEPTIONS! Wire Transfers will be accepted with a 20% non-refundable deposit day of sale. We also accept MasterCard and Visa. A 3% Buyer's Premium will apply to this auction. If payment is Cash, Check, Certified Funds or Wire Transfer the 3% Buyer's Premium will be waived.

**FLYING AIRCRAFT TERMS:** Must be Cash, or Certified Funds. A Company Check will be accepted ONLY with an IRREVOCABLE Letter of Credit from your bank. If a Wire Transfer or Bank Draft is used we need a 20% NON-REFUNDABLE DEPOSIT Day of Sale via one of the above mentioned forms.

**AUCTIONEER'S NOTE:** The owners of First Flight Out have shut the business down and contracted with Starman Bros. Auctions to sell all assets at public auction. This auction offers some very clean low time DC-3's that were being operated on a 135 certificate as well as a very good selection of inventory and some clean shop equipment.

Everything sells "AS IS, WHERE IS" with no warranties implied or expressed. Neither the auctioneer nor owners shall be liable for any incorrect description, fault, or defect. Everything positively sells to the highest bidder. Payment must be made in full day of sale. No property removed until settled for. Auctioneer not responsible for accidents or stolen property. All counts are approximate.

**STARMAN BROS. AUCTIONS INC.**

1240 Royal Drive ■ Papillion, NE 68046-2082  
 (402) 592-1933

## DC - 3/C-47 CONTROL SURFACES

(4 Ea.) Ailerons  
 (18 Ea.) DC-3, C-47 Flaps  
 Vertical Stabilizer  
 (2 Ea.) Horizontal Stabilizers  
 (4 Ea.) Wing Tips  
 (4 Ea.) Main Fuel Tanks and Saddles  
 Main Tank Panel

Several Oil Tanks  
 (12 Ea.) DC-3 Elevators  
 (10 Ea.) DC-3 Rudders  
 (4 Ea.) Horizontal Stabilizer Tips  
 Control Surface Trim Tabs

## OFFICE EQUIPMENT

Misc. Office Equipment and Desks, Chairs, Filing Cabinets, Folding Tables, Computers, BK Shelves, Break Room Furniture, Falcon 20 Cabinets  
 Liberty Gun Safe

## BENCHES AND SHELVING

4' Metal Shop Bench  
 Various Section of Pallet Racking  
 Misc. Shelving Units  
 Shop Benches and Saw Horses

## EXHAUST

Lg. Selection of 1830 Exhaust - All Segments Used  
 Lg. Selection of Heater Muffs  
 Heat Exchange Muff Seat Assys.

## DC-3 AND P&W 1830 TOOLS

Cyl. Base Wrenches, Valve Spring Compressors, Valve Adjusting Wrenches, Push Rod End Removal Tools, Spark Plug Socket, Lifter Block Removal Tool, Stud Remover, Crows Feet, Jack Pads, Intake Wrenches, Push Rod Tube Tools, Reamers, Spanner Wrenches, Cyl. Ring Compressors, Oil Screen Assy., Jig, -94 Mag. Timing Tools, Starter Dog Removal Tools, Bonny Wrenches, Prop Dome Lifting Handles  
 1830 Eng. Slings  
 Turning Bars  
 Hamilton Standard Prop Tools  
 Blade Paddles

## OILS AND CHEMICALS

Various Aircraft Oils - Qts. and 55 Gal. Drums  
 Various Drums of 5606 Hyd. Fluid  
 Isopropyl Alcohol  
 Dope and Fabric Working Chemicals, Good Selection: Spray Paints, Lubricants, Oil, Grease, Prist, Etc.

## INSTRUMENTS

(Approx. 80 Ea.) Instruments to Include Overhauled Yellow Tagged and Cores, Directional Gyros, Altimeters, Tach Indicators, Fuel Pressure Gauges, Magnetic Compasses, CHT Gauges, Oil Temp. Gauges, OAT Gauges, Oil Pressure Gauges, Suction Gauges, Manifold Pressure, Horizon Gyros

## HARDWARE

AN-3-4-5 Bolts, AN Screws, Clevis Pins, Castellated Nuts, AN and MS Nuts and Self-Locking Nuts, AN Washers Including Starlock Washers, Cherry & Cherry Mac Rivets, Rib Nuts, Nut Plate, Dzus Fasteners, Adell Clamps, Cam Locks, Turn Buckle Inventory, Rod Ends, AN Hydraulic Fittings

## FALCON 20 INVENTORY

GE Starter Generator Core Mdl. #2CM82J1B, Ignition Exciter (New), Union P/N 59501-43467, Landing Lights Seal Beams, Misc. O-Rings

**STARMAN BROS. AIRLINE SERVICES, INC.**

9000 NW 15TH STREET ■ MIAMI, FL 33172  
 (305) 477-6865

BE SURE TO VISIT OUR WEB SITE! [www.starmanauctions.com](http://www.starmanauctions.com)

# AVIATION

# AUCTION

## SATURDAY, AUGUST 14, 2004

4825 Express Dr.  
Charlottedouglas  
International Airport  
Charlotte, North Carolina

Directions: From I-85 - Take Billy  
Graham Parkway, go to West Blvd.  
(Rt. 160), turn right, go to Yorkmont  
Rd., turn right, go to Express Drive,  
turn left to hangar.

Starting at 9:30 A.M.  
**FIRST FLIGHT OUT INC.**

**ABSOLUTE  
AUCTION**

Sale Site Phone:  
402-592-1933



PRSRT FIRST CLASS  
U.S. POSTAGE  
**PAID**  
PERMIT NO. 7  
WATERLOO, NE

**FIRST CLASS**

**Airline Connections:** Major airline service  
into Charlottedouglas International Airport, rental  
cars available there.

### HOTELS

Wyndham Garden Hotel  
2600 Yorkmont Rd.  
Charlotte, NC  
704-357-9100

Amerisuites  
2950 Oak Lake Blvd.  
Charlotte, NC  
704-423-9931

Holiday Inn  
2707 Little Rock Rd.  
Charlotte, NC  
704-394-4301

Homestead Studio Suites  
710 Yorkmont Rd.  
Charlotte, NC  
704-676-0083

**STARMAN BROS.  
AUCTIONS INC.**

1240 Royal Drive • Papillion, NE 68046-2082  
(402) 592-1933

www.starmanauctions.com  
Return Service Requested

**STARMAN BROS.  
AUCTIONS INC.**

1240 Royal Drive • Papillion, NE 68046-2082  
(402) 592-1933

**STARMAN BROS.  
AIRLINE SERVICES, INC.**

9000 NW 15TH STREET • MIAMI, FL 33172  
(305) 477-6865

www.starmanauctions.com





# FLYING DC-3/C-47 AIRCRAFT



1942 Douglas DC-3/C-47  
N-79017, S/N 19227  
Airframe: 16,769 Total Time  
Engines: P&W R-1830-94's  
Left: 540 Hrs. S.M.O.H.  
Right: 1,083 Hrs. S.M.O.H.  
Propellers: Hamilton Standard  
Paddle Blade 23E50  
Left: 435 Hrs. S.O.H.  
Right: 732 Hrs. S.O.H.  
Avionics: Dual King KX-155 Nav  
Coms  
King KMA-24 Audio Panel w/3  
Lite Mkr.  
Colling 650A ADF  
Wilcox Transponder  
Apollo Mdl. 2001 NMS VFR GPS



Cargo Configuration, Aluminum  
Cargo Liner, 3003 Premium  
Diamond Plate Floor, Cargo  
Winch, Maintained On Part 135  
Certificate, All Inspections Up  
to Date, Wing Pull Done,  
Painted in WWII Colors with D-  
Day Invasion Stripes and Allied  
Markings. Aircraft has war  
history.



1942 Douglas DC-3/C-47  
N-58NA, S/N 12970  
Airframe: 48,718 Hrs. Total Time  
Engines: P&W R-1830-92's  
Left: 117 Hrs. S.M.O.H.  
Right: 1,360 Hrs. S.M.O.H.  
Propellers: Hamilton Standard  
Toothpick, 23E50  
Left: 0 Hrs. S.O.H.  
Right: 0 Hrs. S.O.H.  
Avionics: Dual King KX-175B Nav  
Coms  
Dual King KT-76 Transponders  
Dual King KA-134 Audio Panels  
King KR-87 ADF  
Apollo Mdl. 2001-NMS VFR, GPS



Cargo Configuration with 3003  
Premium Diamond Plate, Cargo  
Winch, Maintained on Part 135  
Certificate, All Inspections Up  
to Date, Wing Pull Done,  
Painted in WWII Colors with D-  
Day Invasions Stripes and  
Allied Marking, Fresh Paint.  
Aircraft has war history.



1942 Douglas DC-3/C-47  
N-115SA, S/N 13310  
Airframe: 27,863 Hrs. Total Time  
Engines: P&W 1830-92's  
Left: 1,254 Hrs. S.M.O.H.  
Right: 1,482 Hrs. S.M.O.H.  
Propellers: Hamilton Standard  
Toothpick 23E50  
Left: 1,693 Hrs. S.O.H.  
Right: 1,693 Hrs. S.O.H.  
Avionics: King KT-76 Transpon-  
der  
Dual King KX-175B Nav Coms  
King KR-87 ADF  
Apollo 2001 VFR, G.P.S.  
Narco 190 DME  
Cargo Configuration, Aluminum  
Cargo Liner, 3003 Premium  
Diamond Plate Floor, Cargo  
Winch

## FUEL TRUCKS



Dart 8,000 Gal. Low Profile Avgas Truck, Steel Tank  
with Fresh Epoxy Lining, Dual Pumps and Meters,  
(1) Single Point Hose, (1) Overwing Hose, Top and  
Bottom Load, Cummins Diesel Engine



1966 Ford 1,200 Gal. Avgas Truck, Steel Epoxy Lined  
Tank, Single Pump, Meter and Reel, Top and Bottom  
Load, V-8 Engine, 4 Speed Trans.

## ENGINE CORES

(4 Ea.) P&W R-1830 Engine Cores  
P&W R-1830-92 Engine Pineapple  
(1 Ea.) P&W R-1830-94 Engine Core Less Cyl.

## ACCESSORIES

(1 Ea.) Bendix 1416 Starter - OH	(2 Ea.) Feathering Pump Motor Cores
(1 Ea.) Bendix Mdl. 36E00 Starter - OH	(5 Ea.) Wet Vacuum Pumps - OH
(3 Ea.) Jack & Heinz Mdl. JH6 Starter - OH	(25+ Ea.) Wet Vacuum Pump Cores
(1 Ea.) Bendix 1416 & 756 Starter Cores	(1 Ea.) De-Icer Distribution Valve - OH
(1 Ea.) Bendix Scintilla SF14LN-8 Magneto - OH	(6 Ea.) De-Ice Distributor Valve Cores
(3 Ea.) Bendix Mdl. SF14LN-3 Magnets - OH	(1 Ea.) Acceleration Pump - OH
(67 Ea.) Magneto Cores; To Include Bendix SF14LN-8, SF14LN-3 and American Bosch SF14LU-8	(1 Ea.) Alcohol Pump - OH
(5 Ea.) Hydraulic Pumps P/N Including: IP582K2, IP582CAC - OH	(20 Ea.) Alcohol Pump Cores
(18 Ea.) Hydrolic Pump Cores	(4 Ea.) Windshield Wiper Motors - OH
(2 Ea.) P-1 Generators - OH	Several Windshield Wiper Motor Cores
P-1 and P-2 Generator Cores	(10 Ea.) Bendix Carburetors Cores PD12-7 and PD12-4
(2 Ea.) Hamilton Standard Prop Governors - OH	Bendix Carburetor - OH
(18 Ea.) Hamilton Standard Prop Governor Cores	(3 Ea.) Oil Cooler Cores
(4 Ea.) Tach Generators - OH	(6 Ea.) Oil Cooler Regulator Cores
(40 Ea.) Tach Generator Cores	(3 Ea.) Hyd. Selector Valves P/N #3012 - OH
(4 Ea.) Fuel Boost Pump Motor P/N #A4949 - OH	Several Oil Pressure Switches
(1 Ea.) Fuel Boost Pump and Motor Assy. - OH	Several Fuel Transmitters
(6 Ea.) Fuel Pumps - OH	Cont. TSIO-S20 Oil Pump Core
(13 Ea.) Fuel Pump Cores	Janitrol Heater Assy.
(15 Ea.) Pesco Fuel Pump Motor Cores	Fuel Slide Valves
(3 Ea.) Feathering Pump Motors - OH	(1 Ea.) Accumulator - OH
(2 Ea.) Feathering Pumps - OH	(2 Ea.) Fuel Selector Valves - OH
(2 Ea.) Feathering Pump and Motor Assy. Cores	(2 Ea.) Fuel Shut-Off Valves - OH
	(2 Ea.) Oil Shut-Off Valves - OH
	(2 Ea.) Garrett Turbo Charger Cores
	(3 Ea.) Adel & Weldon Fluid Metering Pumps - OH
	(3 Ea.) Vac. Suction Release Valves - OH
	(3 Ea.) Eng. Fire Bottles
	(4 Ea.) Hyd. Shut-Off and Relief Valves - OH
	(12 Ea.) Fuel Selector Valve Cores

## ELECTRICAL INVENTORY

Seal Beams, Miniature Bulbs, Press to Test Lights, Relays, Toggle Switches, Rheostats, Circuit Breakers, Cannon Plugs, Thermo Switches, Solenoids, Transistors, Shrink Tubes, Wiring, Spiral Wraps  
Lg. Selection of Solenoid Cores  
Rotating Beacons  
Eyebrow Lights  
Oil and Fuel Transmitters  
Edison Fire Detection Relays - OH and Used  
Reverse Current Relays - Used  
Solenoids - Used

## ENGINE INVENTORY

-94 Cyl. Assy. - OH  
(22 Ea.) P&W 1830-92 and 94 Cylinder Cores Front and Rears  
(3 Ea.) 1830 Nose Cases  
(2 Ea.) 1830 Blower Cases  
(3 Ea.) Scavenge Pumps - OH  
Carburetor Air Boxes  
Eng. Oil Sumps  
Carburetor Adapter Plates  
1830 Pistons  
Intake Pipe and Nuts  
Intake Inserts  
Push Rods and Push Rod Housings  
P&W 1830 Wire Looms

Several Harness Leads  
Eng. Fire Shields  
Rocker Box Covers  
(3 Ea.) Air Oil Separators - OH  
P&W 1830-94 Eng. Parts to Include:  
Nose Plates, Cases, Master Rods, Link Rods, Cams, Internal Gears, Scavenge Pumps, Piston Rings, Oil Screen Assys. (Several OH), Oil Screen Spacers, Oil Screen Plugs and Supports, Rocker Arms, Crush Gaskets, Misc. Seals, O-Rings and Gaskets  
Good Selection of Engine and Aircraft Gaskets and O-Rings

## WHEEL AND BRAKE INVENTORY

(2 Ea.) Power Brake Valves - OH  
Several Power Brake Valve Cores  
(20 Ea.) DC-3 Main Wheels  
Several Double Brake Axles  
Main Wheel Bearings  
(11 Ea.) Bendix Shoe Type Brakes  
(2 Ea.) Expander Tube Brakes  
Several DC-3 Brake Shoe Assy.  
Several New DC-3 Brake Linings

Disk Brake Linings  
Brake Rivets  
Brake Pistons  
Shoe Adjustment Screws  
Brake Springs  
Expander Brake Linings  
Brake Dust Covers and Supports  
Master Brake Boots  
Brake Hardware



## RAMP EQUIPMENT



Northwestern Mdl. JG-40PT7 Aircraft Tug, 4,000 Lb. D.B.P. Flathead 6 Cyl. Engine, Auto Trans.



Toyota Mdl. 42-5FG25 Forklift, 5,000 Lb., Propane, Air Cushion Tires, 18' Triple Stage Mast



16' Double Axle Bumper Pull Trailer, Tronair Tow Bar w/Falcon 20 Head Joy Bar Tow Bar



Lincoln Drive Around G.P.U. 28 Volt, 1500 Amp Generator

## SHOP EQUIPMENT



(3 Ea.) Tronair Mdl. 02-1036-0110, 20 Ton 36" Aircraft Jacks  
(2 Ea.) Jack House 42" Aircraft Jacks



(3 Ea.) Jack House 24" Aircraft Jacks  
(2 Ea.) DC-3 Wing Tripod Jacks  
McDermott 5 Ton, 36" Aircraft Jack



Lincoln-Idealarc Tig-300/300 AC-DC Arc Welder w/Argon Attachment, Single Phase 208-230V



Tennsmith Mdl. HBU48, 48" Bench Top Finger Brake 16 Gauge



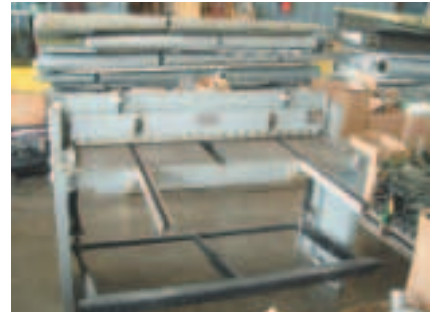
Ramco 55 Ton Hyd. H-Frame Press



Ramco Mdl. RS 100P Horizontal Metal Cutting Band Saw  
Portable Air Compressor w/5 HP, B&S Eng. and 20 Gal. Tank  
Central Machinery #34104 Sheet Metal Bead Roller, 18 Gauge 18", Throat Depth w/Several Dies



Cyclone Blasting Cabinet w/Filter Top Load  
(4 Ea.) 8' Fiberglass Step Ladders  
4' Dbl. Sided Alum. Maint. Ladder



48" Sheet Metal Shear  
(1 Ea.) Oxy Acetylene Cart Gauges and Torches  
36" Bench Top Finger Break  
Coleman, 5 HP, 2000, 250Watt Gen.  
Fireproof Cabinet  
(2 Ea.) 150K BTU Kerosene Heaters  
(2 Ea.) ARO Ingersoll Rand Pneumatic Barrel Pumps  
Dayton 3/4 Horse Bench Grinder  
Portable Air Bottle  
3 Ton Floor Jack  
Several Air Hoses and Extension Cords  
Mech. Creepers and Stools  
Barrel Top Elec. Parts Washer  
Vixen Spark Plug Cleaner Tester  
Champion Spark Plug Cleaner Tester  
Champion Spark Plug Vibrator Cleaner  
NAPA 6, 12, & 24 Battery Charger  
Squirrel Cage Fan  
Shop Vac, Mops, Brooms, Shovels

## HAND TOOLS

Cherry Mdl. G175 Pneumatic Rivet Puller, Cherry Mdl. G749 Hyd. Rivet Puller, Hand Held Rivet Squeezer, Elec. Sheet Metal Nibbler, Prop Protractor, Pacific Scientific & Borroughs Cable Tensiometers, Eastern Magneto Synchronizer, Cable Tester, Time Rite Indicator, Slick Harness Tool, (2 Ea.) Simpson 260 Multimeters, Torque Wrenches, Hose Mandrels, Eastern Differential Press Tester, Dzus Tools; Cable Crimping Tool, Heat Gun, Elec. Drill, Hanson 160 Lb. Spring Scale, Tap & Die Set, Brake Lining Tools, Chicago Elec. Power Sander, Allen Wrenches, No. and Letter Stamps, Grease Guns (Pneumatic and Manual), Alcor TruFlow Fuel Flow Total Indicator Tester, Weller Soldering Gun, Ultra Sonic Cleaner, Helicoils, Pneumatic Impact Wrench, Oil Filter Cutter, Rivnut Tools, 37 Degrees Flaring Tool, Oil Filter Chain Wrench, Pneumatic Orbital Sander

Central Machinery 6" Belt 9" Disc Sander  
(2 Ea.) 5,000 Lb. Pallet Jacks  
(1 Ea.) Nitrogen Cart and Gauges  
Star Machinery  
Elec. Brake Rivetor and Brake Shoe Sander



## COWLS AND INVENTORY



Several DC-3 Top and Bottom Cowls  
Oil Cooler Scoops  
Good Selection of Cowl Flaps

Sev. Cowl Panels  
(3 Ea.) Cowl Flap Selector Valves - OH  
(18 Ea.) Cowl Flap Actuators - OH  
Cowl Lugs  
Anti Drag Ring Toggle Links  
Cowl Dubblers  
Cowl Flap Tie Rods  
Cowl Support Plates  
Cowling Ring Support Brackets  
Cowl Flap Actuating Levers  
Cowl Swivels  
Cowl Flap Actuating Supports  
Cowl Toggle Assy.  
(6 Ea.) Cowl Flap Switches

## LANDING GEAR INVENTORY

DC-3/C-47 Main Landing Gear Truss - Including: Welded and Bolted  
DC-3 - 347 Main Landing Gear Drag Braces (Heavy)  
(1 Ea.) Main Landing Gear Retract Actuator - OH  
DC-3 Main Landing Gear Strut  
Main Landing Gear Trunnions  
Landing Gear Compensating Arms  
Main Landing Gear Actuators  
Landing Gear Compensating Cyls.  
DC-3 Landing Gear Clamshell  
(4 Ea.) DC-3 Tail Wheel and Tire Assys.  
DC-3 Tail Wheels

DC-3 Tail Wheel Struts  
DC-3 Tail Wheel Spindles  
Tail Wheel Bushing and Shear Pins  
Tail Wheel Bearing Housings  
Landing Gear Latch Assy.  
Oil Tank Strap Pads  
Landing Gear Stop Bumpers  
Landing Gear Links  
Landing Gear Bolts  
Strut Attach Fittings  
Landing Gear Switch Levers  
Retract Strut Bolts  
Landing Gear Latch Guides  
Landing Gear O-Rings and Seals  
(30+ Ea.) Landing Gear Selector Valves and Handles

## MISCELLANEOUS

Filters  
Spark Plugs  
Cargo Nets  
402 Main Wheel and Tire Assy.  
(2 Ea.) 8 1/2 x 10 Tires (New)  
C-402 Seats  
Cessna 400 Series Main Landing Box  
Cessna 400 Series Spinner

402 Seats  
Steel Braided Hose  
High and Low Hose  
Good Inv. of Filter and Filter Assys.  
Fire Sleeve  
New Sheet Metal  
Diamond Decking

## PROPELLERS

(2 Ea.) Hamilton Standard Toothpick Props Disassembled Cores  
Hamilton Standard Prop Domes, Hubs, Spiders, Bearings, Etc.  
Prop Dome Plugs, Seal and Nuts  
Prop De-Ice Boots

## AVIONICS

Bendix Computer Amplifiers  
King Remote ADF  
King KPI 550 Auto Pilot HSI Indicator  
KN 65 DME  
King KPI-550 Auto Pilot System

## HELICOPTER INVENTORY

Bell 206 Ground Handling Wheels  
Aerospatiale Ground Handling Wheels  
Bell 206B Side Windows and Misc. Small Parts

## BEECH 18 INVENTORY

R-985 Cyl. - OH  
R-985 Magneto  
Bendix 756 Starter - OH  
30E-16 Generator - OH  
(2 Ea.) 14V Carbonpile Regulators (Serv)

Brake Shoes and Pads  
Misc. Beech Small Parts  
Beech 18 Main Landing Gear Box  
Beech 18 Seats

BE SURE TO VISIT OUR WEB SITE! [www.stormanauctions.com](http://www.stormanauctions.com)