

## ELECTRICAL INVENTORY

Reverse Current Relays (25+); (4 Ea.) Carbon Pile Regulators (25+); Voltage Regulators, Voltage Controllers, Solenoids; (3 Ea.) Landing Lights w/Motors; Several Circuit Breaker Panels; Good Selection of Rotating Beacons; Grimes Strobe Light; Turbine Engine Exciters; Ignition Leads & Excitor Box; Good Selection of GE Sealed Beams & Miniature Bulbs; Several Inverters & Converters; Several Solenoids; Circuit Breakers & Rocker Switches; Several Terminal Kits; (2 Ea.) DC-9 Lens Assys., Red & Green; Good Selection of Elect. Wire & Shrink Tube; Elect. Inv. to Include Miniature Lights, Terminal Ends, Resistors, Circuit Breakers, Sealed Beams

## CABINETS, BENCHES & SHELVING

(2 Ea.) Fireproof Cabinets; (15 Ea.) 6' & 12' Metal & Wood Shop Benches; (18 Ea.) 2-Door Metal Cabinets; Various Metal Shelving Units w/18" Shelves; Good Selection of Metal Shelving; (2 Ea.) Fireproof Rag Cans

## HAND TOOLS

Kellstrom PT6 Tools; Hole Finders; P&W Line Maintenance Tools #30156; PT-6 Fuel Nozzle Cleaner; PT-6 Engine Sling; Bendix High Tension Lead Tester; (5 Ea.) Magneto Timing Lights; Mag Synchronizer; Eastern Cable Tester; (18 Ea.) Pneumatic Rivet Guns; (7 Ea.) Air Drills; (2 Ea.) Right Angle Pneumatic Drills; Huck Pneumatic Rivet Puller Set Mdl. 350; (2 Ea.) Pneumatic Die Grinders; Chicago Pneumatic Orbital Sander; Several Aviation Snips; Rivet Cutters; Large Selection of Clecos & Pliers; Large Selection of Rivet Sets; Large Selection of Bucking Bars; Pneumatic Screw Drivers; (3 Ea.) Hand Held Rivet Squeezers; Rivnut Puller; (5 Ea.) Blind Fastener Installation Kits; Cherry Rivet Pulling Heads; C-Clamps; Several Imperial Tubing Cutters & Flaring Tools; Safety Wire Pliers; Hose Mandrel Set; Several Hand Operated Cherry Rivet Pullers & Heads; (2 Ea.) Parker Beading Tools; Differential Press Tester; Several Micrometers & Bore Gauges; Dial Indicators; Time Rite Ind.; Cold Cylinder Indicator; Several Ball Hones; Cylinder Base Wrenches; Valve Spring Compressors; Helicoil Tools & Kits; Reamers & Cutters; Bushing Drivers; Differential Pressure Gauges; Borroughs Orifice Tool; Seal & Bushing Drivers; (3 Ea.) Stud Remover Kits; Cylinder Thermometer Tester; Prop Protractor; Tap & Die Sets; Altimeter Tester; Dial Ind. & Magnetic Bases; A65 Reamer Set; Rocker Arm Reamers; Slick Mag Tool; (2 Ea.) Ignition Coil, Capacitor Tester; Expandable Hones; Cont. Case Splitter; Radial Engine Tools, Spanner Wrenches, Turning Bars, Prop Tools; Nicopress Tools; Burndy & Amp Cable & Terminal Crimpers; Pin Insertion Tools; Wire Strippers; Cannon Plug Pliers; Spanner Wrenches; (2 Ea.) Simpson 260 Multimeters; Counter Sinks; High Pressure Tire Gauges; Hose Cutting Snipes; Craftsman Router; Hand Held Label Maker; Sioux Valve Seat Stones; (2 Ea.) Low Voltage Test Sets Mdl. D5900; Milwaukee & Rockwell 1/2 Drill; Black & Decker 1/2 Drill; (12 Ea.) Torque Wrenches; Letter Stamps; Spring Scales

**AUCTIONEER'S NOTE:** Southwestern Michigan College has closed their A&P School and have contracted with Starman Bros. Auctions to liquidate all equipment, tools, engine and inventory at public auction. There are also some very good flyable aircraft being sold. If you are an A&P college, supplier or just need inventory, equipment or aircraft do not miss this auction.

Everything sells "AS IS, WHERE IS" with no warranties implied or expressed. Neither the auctioneer nor owners shall be liable for any incorrect description, fault, or defect. Everything positively sells to the highest bidder. Payment must be made in full day of sale. No property removed until settled for. Auctioneer not responsible for accidents or stolen property. All counts are approximate.

**TERMS:** Cash, Certified Funds, or Company Check ONLY if accompanied by Bank Letter of Guarantee!! NO EXCEPTIONS! Wire Transfers will be accepted with a 20% non-refundable deposit day of sale. We also accept MasterCard and Visa. A 3% Buyer's Premium will apply to this auction. If payment is Cash, Check, Certified Funds or Wire Transfer the 3% Buyer's Premium will be waived.

**FLYING AIRCRAFT TERMS:** Must be Cash or Certified Funds. A Company Check will be accepted ONLY with an IRREVOCABLE Letter of Credit from your bank. If a Wire Transfer or Bank Draft is used we need a 20% NON-REFUNDABLE DEPOSIT day of sale via one of the above mentioned forms.

## AVIONICS TEST EQUIPMENT

Barfield Mdl. 1811D/E Pitot Static Test; (5 Ea.) B&K Precision Mdl. 1476A Dual Trace 10mgHertz; Oscilloscopes; Daniels Miniature Crimping Tool Kits; (5 Ea.) Weller Pencil Type Soldering Gun Kits; Weller Mdl. 7200 Soldering Guns; Heat Guns; (2 Ea.) Electronics Tool Kits; (2 Ea.) Contact Crimp Type Elect. Connector Tool Kits; Avionics Test Panel to Include Tektronix Type RM 561A; Oscilloscope w/3A6 + 3B4 Panel & HP 8003A + 8004A Pulse; Generators, HP-3440A Digital Voltmeter & Power Control Panel; Dana Mdl. 4700 Digital Multimeter; (5 Ea.) Simpson Mdl. 467 Digital Multimeters; Large Selection of Small Hand Held Multimeters; HP Mdl. 741B AC/DC Differential Voltmeter; Standard Power Supply Panel; Collins 971F-1 Test Set; Misc. Avionics Test Sets



## MICROFICHE READERS, FICHE & MANUALS

(3 Ea.) Canon PC-70 Reader Printers; Canon PC-70M Microfiche Reader Printer; (4 Ea.) Bell & Howell Microfiche Reader Printers; Microfiche Library to Include AD's, TC's, FAR's, Propeller, Starter/Generators, Brake, GARRETT, Lewis, Lucas, Edo Air, Bendix, TPE 331, PT-6, Lycoming, Continental, Beechcraft, Bellanca, Bell 47, Bell 206, Cessna, Fairchild, Lear Jet, Gulfstream, Mitsubishi, Piper, Schweizer, Socata, Plus, Saberliner, Various Other Manufacturers; Good Selection of Manuals to Include Accy. Manuals, P&W Engine Service Bulletins, Cessna, J-85, R-985, Beech, Prop Gov., Hydromatic Prop, PT-6, King Air, Lyc. T-53, Rolls/Royce, 269 Hughes Helicopter, Bendix, CFM 56, Bell 47 Helicopter, Lyc. & Cont. Engine Overhaul

## MISCELLANEOUS

Good Selection of Aircraft Oil, Turbine Oil, Corrosion Inhibitor, Spray Paints, 5606 Hyd. Fluid, Aircraft Grease, Synthetic Aircraft Lubricating Oil, Mineral Spirits, Turbine Engine Filters, Misc. Dope & Fabric Materials, Several O-Ring Kits, Turbine Inv. Filters, DC-9 Inv. Oil Pump, Filter Elements, Probes, Atomizer, Several Engine Shipping Cans

## HARDWARE

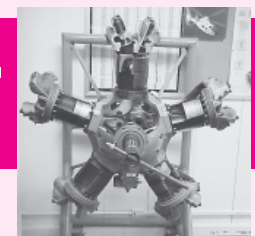
Hardware to Include Camlocks, Clevis Bolts, Pins, Dzus Fasteners, AN, MS, Close Tolerance Bolts, Hex Head Bolts, Engine Studs, Screws, Nuts, Cotter Pins, Lock Washers, Phillips Headscrews, Set Screws, Dowel Pins, Pan Head Screws, Aluminum Screws, Slotted Screws, Counter-sunk Screws, Self Locking Nuts, Nut Plates, Large Selection of AN Fittings, Drilled Head Bolts, Clamps, Large Selection of Cherry & Solid Rivets, Locknuts

## OFFICE EQUIPMENT

Audio Video Cart, Panasonic & JVC TV's, VCR's, Good Selection of Student Desks & Chairs, Overhead & Carousel Projectors, Canon 6030 Copy Machine, Grease & Bulletin Boards, Misc. Office Desks & Chairs, Four Drawer File Cabinets

## ENGINE & MISC. CUTAWAYS

Kinner R-55 Cutaway Engine  
Misc. Accessory & Instrument Cutaways



## COMPUTERS & INVENTORY

(11 Ea.) 500 Mhz PC's; (8 Ea.) 400-450 Mhz PC's; (9 Ea.) 266 Mhz PC's; (8 Ea.) 150-200 Mhz PC's; (30 Ea.) 17" Monitors; (6 Ea.) 21" Monitors; (2 Ea.) New Zenith 12" Monochrome Monitors; (4 Ea.) 14" & 15" Monitors; (4 Ea.) HP Laser Jet III Printers; (7 Ea.) Scanners; (22 Ea.) Surge Suppressors; (34 Ea.) Okidata Printers; (90 Ea.) Labtech LCS-1000 Speakers; (25 Ea.) Data Transfer Switches; (14 Ea.) 3 Com Super Stacker II PS Hub 10's; 3 Com Link Builder FMS-100; 3 Com Super Stacker II PS Hub Dual Speed 500, Etc.

**STARMAN BROS. AUCTIONS INC.**

1240 Royal Drive ■ Papillion, NE 68046-2082  
(402) 592-1933

**STARMAN BROS. AIRLINE SERVICES, INC.**

9000 NW 15TH STREET ■ MIAMI, FL 33172  
(305) 477-6865



BE SURE TO VISIT OUR WEB SITE! [www.starmanauctions.com](http://www.starmanauctions.com)



# AVIATION

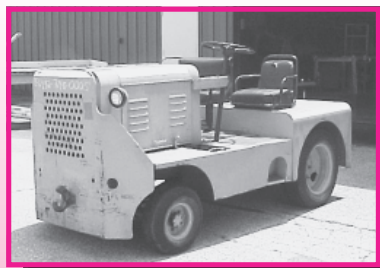
# AUCTION

**SATURDAY, JULY 24, 2004**  
**Starting at 9:00 A.M.**

**Southwestern Michigan College**  
**A & P School**  
58900 Cherry Grove Rd. • Dowagiac, MI

## ABSOLUTE AUCTION

Directions: Dowagiac, MI is located approximately 40 miles north of South Bend, Indiana, and the school is approximately one mile outside of town.



**Sale Site Phone**  
**269-782-1202**

PRSR FIRST CLASS  
U.S. POSTAGE  
**PAID**  
PERMIT NO. 7  
WATERLOO, NE

**FIRST CLASS**

**Airline Connections:** Closest commercial airport is in Chicago, IL. Private aircraft can land at Dowagiac, MI. Identifier C91, unattended w/credit card gas, 4700' asphalt strip or Niles, MI.

### Hotels:

**Amerihost Inn & Suites**  
29291 Amerihost Drive  
Dowagiac, MI 49047  
269-782-4270

**Castle Inn & Suites of Dowagiac**  
57155 M 51 South  
Dowagiac, MI 49047  
269-782-2177

**Holiday Inn Express Hotels**  
1265 South 11th St.  
Niles, MI 49120  
269-684-3900

Niles is approximately 15 miles away.

**STARMAN BROS.**  
**AUCTIONS INC.**

1240 Royal Drive • Papillion, NE 68046-2082  
(402) 592-1933

www.starmanauctions.com  
Return Service Requested

**STARMAN BROS.**  
**AUCTIONS INC.**

1240 Royal Drive • Papillion, NE 68046-2082  
(402) 592-1933

**STARMAN BROS.**  
**AIRLINE SERVICES, INC.**

9000 NW 15TH STREET • MIAMI, FL 33172  
(305) 477-6865

www.starmanauctions.com





# AIRCRAFT



1960 Cessna 210  
N-9591T; S/N 57391  
2,611 Hrs. Total Time (Last Flown 6/88)  
Has Original Logs  
Engine Cont. IO-470-E; 1985 Sreman 1134 Since Top. Engine Log Not Complete.  
Avionics: Narco Mark 12 Nav Coms King KT-75  
Executive II Auto Pilot  
Aircraft will be sold with the wings off to be hauled out, has been used for student annual training.



1970 Cessna 150 L  
N-6853G; S/N 15072353  
1,665 Total Time A&E  
Aircraft will be sold with wings off to be hauled out, has been used for student annual training.



1959 Beechcraft U8D  
S/N 58-3080  
Total Time: 7,044 Hrs.  
Engines: Lycoming O-480-1B  
Times Unknown  
Most Instruments



1959 Beechcraft U8D  
58-3087; S/N RLH-88  
Total Time: 9,032 Hrs.  
L/H Engine: Lycoming O-480-3A  
Changed from Fuel Injection to Pressure Carburetor  
T.T.: 4,076 Hrs.  
S.O.H: 0 Worked on by students  
R/H Engine: O-480-1B  
T.T.: Unknown  
Full Instrument Panel

**NOTE: All aircraft will have to be hauled out on trailers and will be sold as student training aircraft.**



Beechcraft King Air 90  
N-1290A; S/N LJ30  
5,822 Total Time  
R/H Engine: Pratt & Whitney PT6A-6  
TTSN: 6,624 Hrs.  
TSO: 3,102 Hrs.  
HSI: 1,076 Hrs.  
L/H Engine: Pratt & Whitney PT6A-6  
TSN: 5,166 Hrs.  
TSO: 3,313 Hrs.  
HSI: 1,076 Hrs.  
Some Instruments, Misc. Avionics  
Has been used for student training.



Saberliner T-39A-1-NA  
S/N 61-0682  
Total Time: 19,741 Hrs.  
L/H Engine: Pratt & Whitney J60-P3A  
T.T.: 8,384 Hrs.  
T.S.O.: 5,018 Hrs.  
Engine never removed from AC by students.  
R/H Engine: Pratt & Whitney J60-P3A  
T.T.: 13,283 Hrs.  
T.S.O.: 6,518 Hrs.  
Engine taken off by students several times.  
Has Misc. Instruments

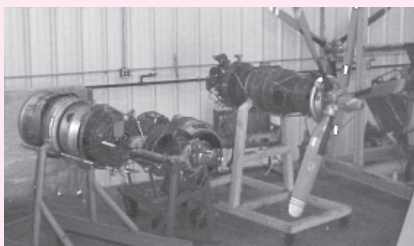


Bell UH-1H (205) Helicopter  
S/N 6509762  
Total Time: 6,670 Hours  
Engine: Lycoming T-53-L-13 B  
T.T.S.N.: 3,255 Hrs.  
T.T.S.O.: 2,045 Hrs.  
M/R Blades Have 656 Hours and 478 Hours Remaining  
Transmission: 895 Hrs. Remaining  
T/R Blades Have 484 Hrs. Remaining  
Swashplate Has 847 Hrs. Remaining  
M/R Hub Has 698 Hrs. Remaining  
Other Components are High Time to Run Out  
Interior is Complete w/Troup Seats

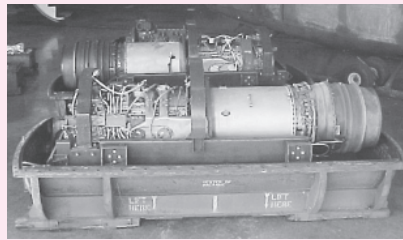


Hughes TH-55A Helicopter  
S/N 480827  
Total Time: 2,823 Hrs.  
Engine: Lyc. HIO-360-BIA 974 Hrs. S.O.H.  
M/R Blades: Times Unknown  
Tail Boom: 14,500 Hrs. Remaining  
M/R Transmission: 1,010 Hrs. Remaining  
M/R Hub & Drive Shaft: 177 Hrs. Remaining  
T/R Gear Box: 449 Hrs. Remaining  
T/R Drive Shaft: 2,109 Hrs. Remaining  
T/R Blades: 4,000 & 3,000 Hrs. Remaining  
All other components have good times remaining.

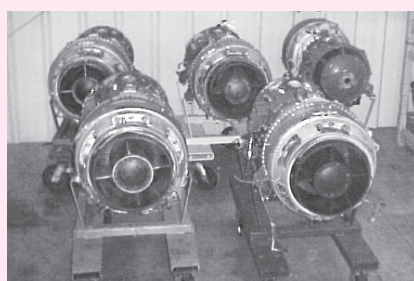
## TURBINE ENGINES & STANDS



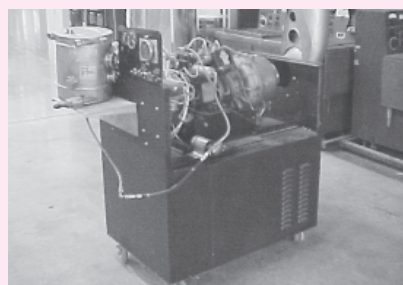
P&W PT6A-20 Turbine Engine w/All Accy. & Prop. No. Data Plate  
P&W PT6A-20 Partial Engine  
PT-6 Turbine Section  
(3 Ea.) P&W JT12A-6A Turbine Engine



(2 Ea.) Allison T56-A-7B Engines  
Allison 250-C18 Turbine Engine



(4 Ea.) Lycoming T53-L-9A Engines  
(5 Ea.) Lycoming T53-L-7A Turbine Engines  
(5 Ea.) Lyc. T53 Engine Stands  
GE T58 Engine Stand  
(2 Ea.) P&W JT12A-6A Turbine Engine Stands  
J-60 Engine Stand



Sol Air T62T-2A1 APU on Run Up Stand  
(6 Ea.) Sol Air T-62-2A1 APU  
GE T58-GE-3 Turbine Engine  
GE T58-GE-8B Turbine Engine  
J-60 Engine  
(3 Ea.) Allison TF41-A1B Turbine Engines  
GE J85-GE-7 Turbine Engine  
(2 Ea.) P&W PT-6 Engine Stands  
Allison Engine Stand

## TRAINING AIDS



Janitrol Heater Training Mock Up  
Air Conditioning Training Aid Mock Up  
Cabin Heaters & Blower Training Aid  
Landing Gear & Hydraulic Training Aid Board  
L/G Brake Training Aid  
Dual Sided Hyd. Training Board



Pneumatic Dual System Training Aid w/Airesearch Turbine  
Military Style Air Compressor Training Aid  
Cabin Pressure Training Aid  
Sikorsky Transmission & Rotor Head Training Aid  
Hyd. Training Aid Board  
KC 97 Autopilot Trainer  
(3 Ea.) Multi-Purpose Circuit Constructor Training Benches  
ATC Mdl. 510 Flight Simulator  
28V Nav Light Simulation Panel



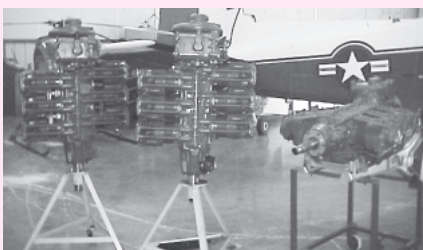
## WHEELS & BRAKES

(3 Ea.) DC-9-31 Wheel & Tire Assys., 40 x 14, Some w/New Tires; DC-9 Wheel & Brake Cut Away; (3 Ea.) DC-9 Nose Wheel & Tire Assys.; (3 Ea.) DC-9 Brake Assys.; 40 x 14 Tire, New; 26 x 6.6 High Speed Tire, New; (3 Ea.) 26 x 6.6 Tires, High Speed, New; (3 Ea.) 26 x 6.6 Wheels; (2 Ea.) 6.50 x 10 Wheels; 24 x 7.7 Wheel; Beech 7.50 x 10 Wheel & Brake Assy.; 7.00 - 6 Wheel & Tire; Misc. Other Wheel & Brakes Including Calipers, Master Cylinders, Etc.

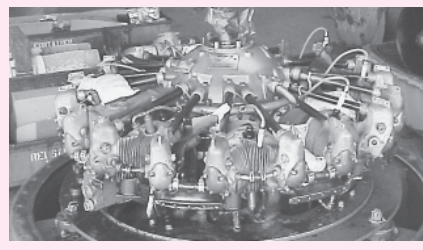
## PROPELLERS

Hartzell 3-Bladed King Air Prop; McCaulley Mdl. D3A32C88 3-Bladed Prop; Hartzell King Air Prop; Hartzell 3-Bladed Prop; McCaulley Const. Speed; McCaulley Fixed Pitch; Fixed Pitch Prop; (6 Ea.) HAM-STD Blades MFN #811404; (3 Ea.) Hartzell Prop Blades; (3 Ea.) Ham Std. 5351-23 Props, Disassembled; (3 Ea.) Ham Std. Prop Blades; Hamilton Standard Prop; Hartzell Constant Speed Props w/Cut Blades; Wood Prop Hub; Misc. Other Hubs & Blades

## RECIP ENGINE CORES



(9 Ea.) Lyc. O-480-1B Engine Cores



(2 Ea.) Pratt & Whitney R985-AN Engine Cores

Lyc. O-320 Engine Core w/Accys.; Cont. GTSIO-520-G Engine Core; Cont. TSIO-360-C Engine Core; Cont. E-185 Engine Core; Cont. E-Series Engine Core; Cont. 6 Cyl. Packet Engine Core; Cont. 4 Cyl. Packet Engine Core; (6 Ea.) Cont. A-65 Engine Cores; Cont. A65-8F Engine Core; Cont. O-300 Engine Core; O-300 Pine-apple; Lycoming GO-435-C2B1 Engine Core

## LANDING GEARS

C-150 Nose Gear Assy.; (3 Ea.) Misc. Cessna & Piper Nose Forks & Struts; Piper PA-24 MLG; Piper Nose Gear Assy.; Queen Air Nose Gear Assy.; King Air Upper Trunnion; Beech Nose Gear Assy.; (3 Ea.) C-310 Main Gears; Early C-310 Nose Gear Assy.; C-177 Nose Gear Assy.; (2 Ea.) Cessna Hyd. Power Packs; (3 Ea.) Cessna MLG; (2 Ea.) Queen Air MLG Assys.; (2 Ea.) C-150 Spring Gears; (2 Ea.) Cessna Tube Gears; DC-9 Brake DeBooster Actuators; DC-9 NLG Steering Actuator

**STARMAN BROS. AUCTIONS INC.**  
1240 Royal Drive • Papillion, NE 68046-2082  
(402) 592-1933

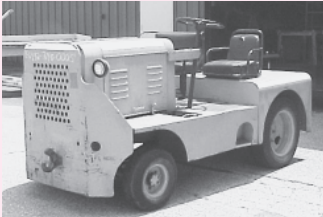
**STARMAN BROS. AIRLINE SERVICES, INC.**  
9000 NW 15TH STREET • MIAMI, FL 33172  
(305) 477-6865



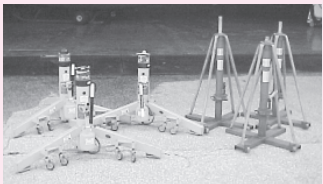
# RAMP & SHOP EQUIPMENT



(2 Ea.) Trilectron LP28-400 Start Carts (Near New) Input 440 V 25-100 Amps 3ph 60 Hertz Output 28V 400-2000 Amps



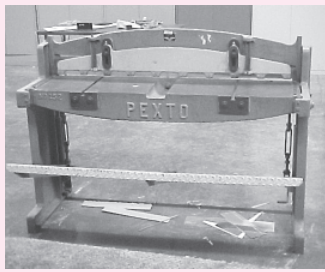
Northwestern Mdl. JF-40PT-9 Aircraft Tug 4,000 Lb. DBP Auto Trans Chrysler Slant 6 Engine



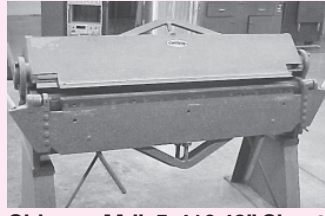
(3 Ea.) Meyers 8 Ton 32" Aircraft Jacks  
(3 Ea.) Rock Air 36" Tripod Jacks



Chicago Mdl. 818, 8' Sheet Metal Brake



Pexto Mdl. 152-K 51" Sheet Metal Shear, 16 Gauge



Chicago Mdl. 5-416 48" Sheet Metal Brake  
Pexto Mdl. 0325 Bench Top Shear



Erco Mdl. 1447 Foot Operated Sheet Metal Shrinker/Stretchers  
Pexto Mdl. 381-D 36" Bench Top Sheet Metal Roller  
Chicago Pneumatic Compression Riveter On Stand



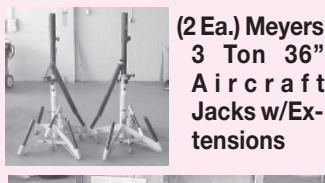
Marathon Mdl. PCA131-50/60 NICAD Battery Charger Analyzer  
Hyfore Mdl. 2001D100 NICAD Battery Charger Analyzer



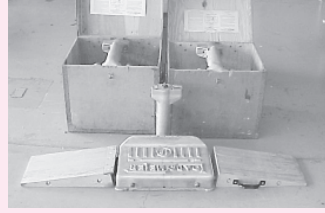
Tronair Mdl. 05-7015-1100 Hyd. Mule 5606 Fluid 5000 PSI



Rapid Type B-9 Metallic Rectifier 400 Amp 28V Output (2 Ea.) Metallic Rectifier Output 200 Amp 28V Typ B-8



(2 Ea.) Meyers 3 Ton 36" Aircraft Jacks w/Extensions



(3 Ea.) Hi-Way Load-O-Meter Drive On Aircraft Scales 20,000 Lbs. Each



Spec Tool DC-9 Brake Change Dolly Mdl. STC-90474-101

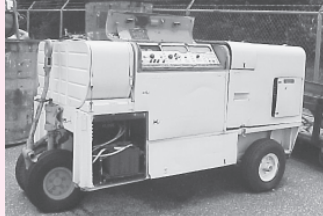
Spec Tool DC-9 Wheel Change Dolly Mdl. STC-90475-101

Meyers 25 Ton Hyd. H-Frame Press

Presto Mdl. LEE-1-100 Pneumatic Tire Holder & Bead Breaking Machine

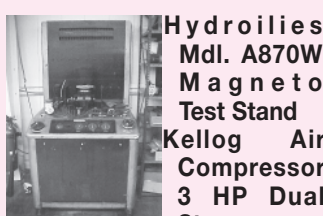


Cox & Stevens Type D-1 Aircraft Weighing Kit



(3 Ea.) MD-3 Generator Carts w/Cont. 6 Cyl. Packet Engine

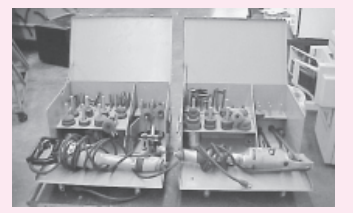
Airesearch Mdl. GTGE30-15 Turbine Engine Gen Set  
Military Gasoline Generator Set, 3 KW 105 Amps DC



Hydroilies Mdl. A870W Magneto Test Stand  
Kellogg Air Compressor 3 HP Dual Stage

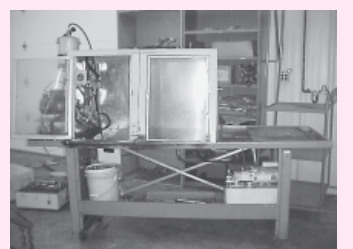
(2 Ea.) Meyers Tail Stand Small Paint Booth w/Rotating Table & Fan

Sioux Mdl. 6024 Wet Valve Facing Machine  
Sioux Mdl. 645LC Wet Valve Facing Machine



(3 Ea.) Sioux Valve Seat Drive Sets w/Driver Stones, Pilots, Etc.

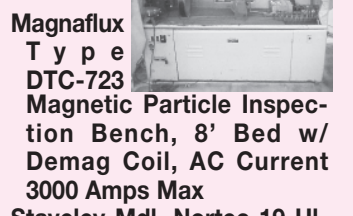
Shop Built Nose Wheel Aircraft Tug  
Ruger 2,000 Lb. Engine Hoist w/Extension Boom  
Engine Hoist 2,000 Lb.



Hyd. Pump Test Stand  
Kearney Cable Sweager w/ Dies Gauge Blocks



Weidenhoff Mdl. 575 Starter/Generator Test Stand



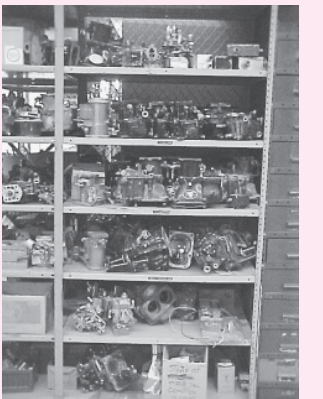
Magnaflex Type DTC-723 Magnetic Particle Inspection Bench, 8' Bed w/ Demag Coil, AC Current 3000 Amps Max

Staveley Mdl. Nortec-19 Ultrasonic Flaw Detector  
Staveley Sonic-136 Ultrasonic Flaw Detector  
AC Spark Plug Vibrator Cleaner

(2 Ea.) Champion Spark Plug Vibrator Cleaner

Type 1 Mdl. 28555 Preoiler/Pickler Cart, Regent Mdl. 4000A Jet Engine Trailer, Composite Educational Services 1000 S Hot Bonder, Craftsman Variable Speed Drill Press, Shop Built Hyd. Mule, Drake No. 1 Arbor Press w/Stand, Bead Blast Cabinet, Clean-O-Matic Elect. Parts Cleaner, Magnaflex Zyglo Test Kit with Black Light, Frame for Engine Run Up Stand (Type D-1 Universal Aircraft Truck), Air Conditioning Charging Cart Shop Built, APU Cable, (8 Ea.) Engine Build Stands, Engine Run-Up Stand Type D-2, (10 Ea.) Military Roll-Around Cabinets P/N 65D21051, Fuel Cart, B1 Maintenance Stand, Joy Bar Tow Bar, Jet Cal Tester P/N H119M, 100 Gal. Pickup Fuel Tank (NEW), Airesearch Mdl. UPUA 4-2 Gas Turbine Engine Analyzer, P&W P/N 15222 Engine Remote Trim Tester, (3 Ea.) 10' 500 Lb. Maintenance Stand/Ladders, (3 Ea.) 3' Maintenance Steps, Tire Rack, Several Jack Points, Oxy Acetylene Torch Cart & Bottles, 6/12 + 24 Volt Batt. Charger, Scott Survival Kit Tester, Goodyear Wheel Balancer, APU Cables & Ends, Craftsman Bench Grinder, Pexto Mdl. 0547A Bench Mounted Sheet Metal Bearer, MM&M Type MP-1 Hydraulic Press Gauge Tester, Singer Commercial Sewing Machine, Strut Pump, 8 Gal. Wet Dry Vac, 6/12/24 Volt Battery Charger, (2 Ea.) Brake Bleeder Pots, Grill TDMC-85 Dual Mode Trickle Battery Charger, Eastern Mdl. E100 Alt/Battery Tester, Nitrogen Cart & Gauges, Barrel Pumps, Cont. 65/85 Engine Run Up Stand, Temp/Pressure Test Set, Jered Fuel Injector Test Set P/N 8718994, 100 Gal. Fuel Transfer Cart, Barrel Dolly, Surface Table & V-Blocks, SNAP-ON Armature Growler, Link Valve Spring Checker Mdl. PB 4D, (5 Ea.) Simpson & Triplett Multimeters, Sweeney Mdl. 7065 Torque Tester 0-6000 In. Lbs. 0-500 Ft. Lbs., Inch Lb. Torque Tester, Consolidated Mdl. 2000 Torque Tester 0-200 Inch Lbs., Simpson 467 Digital Multimeter, Oxy-Acetylene Hoses & Torches

## ACCESSORIES



(30 Ea.) Bendix & Slick Magnetos; Mag Harness; (15 Ea.) MA 4-5 Carburetors; (3 Ea.) HA-6 Carburetors; (2 Ea.) MA 3SPA Carburetors; (2 Ea.) NA-S3 A; (20 Ea.) PSH 7BD Pressure Carburetors; (12 Ea.) NAR 9B Carburetors; (2 Ea.) NAR 7B Carb.; (2 Ea.) RSA 10 Fuel Inj. Servos; RSA 5 Fuel Inj. Servo; (2 Ea.) Cont. Throttle Bodies; (2 Ea.) PS5-BD; (11 Ea.) Radial Engine Carbs.; (10 Ea.) Starter Cores; (20 Ea.) Alternators; (20 Ea.) Generators; (3 Ea.) Garrett Turbo Chargers; Turbo Controllers; (6 Ea.) Eclipse Type 0-4 Generators; Eclipse Model - 1 Generator; (2 Ea.) Bendix P/N 30845-21 DC Starter Generators; Lear Siegler Starter/Generator; GE Starter Mdl. 2CM95; CSD w/Generator; T56

Airstarter; Bendix Air Turbine Starter; Rotax Type C3804 Starter; Airesearch Mdl. JFS100-13A Jet Engine Starter; Ham Std. Mdl. FAS430-23 Fuel/Air Comb. Starter; (2 Ea.) AC Generators 25 KVA; Leland AC Generator P/N AG139-1; (4 Ea.) 756 & 4116 Starters; (17 Ea.) Woodward & Ham Std. Prop Governors; (13 Ea.) Tach Generators; (21 Ea.) Airborne, Pesco, Adel, Thompson & Lear Fuel Boost Pumps; Cont. Fuel Injection Pump; (8 Ea.) Mechanical Fuel Pumps; Mag & Carb Inv.; (3 Ea.) Wet & Dry Vac Pumps; Fuel Selector Valves; (3 Ea.) Oil Coolers; Janitrol Heaters; (3 Ea.) Hyd. Pump & Motors; Hyd. Accumulator; Whittaker & Itt Slide Valves; Large Selection of Blower & Motor Assys.; Axial Flow Fans; Very Large Selection of Hyd. Pumps to Include Vickers, Stratopower; Very Large Selection of Landing Gear & Control Surface Actuators; King Air L/G Motors; Beech Flap Gear Boxes & Motors; Water Separator Cutaway; Several Outflow Valves; Several Pressure Switches; Cutaway Cooling Turbine; Fire Bottles; (8 Ea.) Bendix FCU's; Misc. Oil Fuel Transmitters

## RECIP & TURBINE ENGINE INV.

(34 Ea.) Cont. 65/85-200 Cylinders; (12 Ea.) E Series Cylinders; (41 Ea.) Misc. Lycoming Cylinders; (3 Ea.) Cont. IO-360 Cylinders; (4 Ea.) Cont. 65 Tapered Flange Crankshafts; (3 Ea.) Lyc. 480 Crankshafts; (6 Ea.) Cont. 65/85 Crank Cases; (5 Ea.) Cont. 65/85 Accy. Cases; (4 Ea.) Lycoming Blower Sections; Cont. 65 Intake Spider; O-200 Intake Spider; Airesearch Diff. Press. Reg. W/8130; 392454-1-1; Several DC-9 Expendables, O-Rings, Seals, Packing, Electrical, Hardware, Filters; Differential Press Regulator O/H #108032-8  
Engine Inv. to Include Cont. 65/85, Gaskets, Oil Pump Gears, Valves, Rocker Arms, Pistons, Piston Rings, Intake Tubes, Mag Harness  
Misc. Turbine Inv. to Include Burner Cans, Compressor Wheels, Bleed Valves

## AIRFRAME & MISC.

Several Queen Air/T-Bone Exhaust for 480 Engines; Misc. Mufflers; C-337 Fuselage w/Nose & Main Gears; Commander Mdl. U9 Fuselage w/Nose & Main Gears; C-337 Wings; C-337 Cowling Panels; 337 Tail Booms; 337 Elevators; (3 Ea.) C-150 Flap; (2 Ea.) C-150 Fuel Tanks; (7 Ea.) C-150 Elevators; (13 Ea.) Misc. Piper & Other Fabric Control Surfaces; (4 Ea.) Queen Air Cowlings; (10 Ea.) Misc. Spinners & Backing Plates; (3 Ea.) Engine Mounts; (4 Ea.) Cessna 150-152 Wings, Damaged; Queen Air Elevator; (2 Ea.) Queen Air Air Boxes; O-200 Airbox; King Air Exhaust Duct; Misc. Hinge Stock; (12 Ea.) Misc. NICAD Batteries to Include Marathon & Sonotone; Bell 212 T/R Blade; (3 Ea.) TriPacer Door & Top Cowl; Ultralight Misc. Inv.

## INSTRUMENTS & AVIONICS

Large Selections of Instruments, Rate of Climbs, Course Ind., Gyros, Knot Ind., Carb. Air Temps., Turbine Inst., RPM Ind., Cabin Temp., Engine Gauges, Fuel Gauges, Turn & Banks, Oil Pressure, Fuel Pressure, Altimeters, Collins Fuel Gauge 331A-7 Course Ind., Air Temp., De-Ice Pass; (4 Ea.) Sperry SP 50A Roll Axis Computers, Serviceable; Collins 618M1 VHF Transceiver; Collins 51RV-4B VOR, ILS Nav Receiver; Collins 344C-1D Inst. Amplifier; Collins 51RV-2B VOR/ILS Receivers

BE SURE TO VISIT OUR WEB SITE! [www.starmanauctions.com](http://www.starmanauctions.com)