

AVIATION AUCTION

**FRIDAY, SATURDAY & SUNDAY
NOVEMBER 9th, 10th & 11th, 2012**
Starting at 9:00 A.M. ALL THREE DAYS!

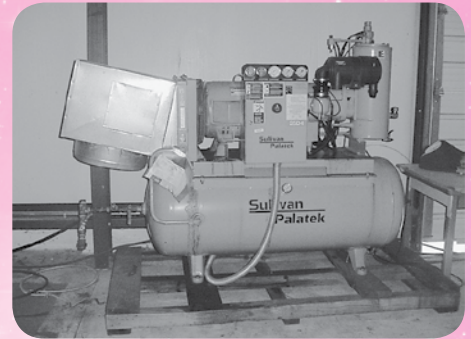
*Absolute
Auction*

ANNUAL FALL CONSIGNMENT AUCTION

**1701 North Cimarron Road • C.E. Paige Airport
Yukon, Oklahoma**

Directions: Take I-40 West from Oklahoma City through Yukon to Cimarron Road (C.E. Page Airport Exit), turn Left and go South 1 Mile.

***Open House & Pre-Registration:
Thursday, November 8th - 8:00 A.M. - 5:00 P.M.***



**SALE SITE NUMBER:
Scott Moore
(402) 681-3652**

AIRLINE CONNECTIONS

Most Major Airlines serve Will Rogers Airport in Oklahoma City, Rental Cars Available There. Private Aircraft can Land at C.E. Page Airport, the Identifier is RCE.

HOTEL Headquarters:

Magnuson Hotel &
Meridian Convention Center
737 South Meridian
405-942-8511

Local Hotels:

Best Western Saddleback Inn
405-947-7000
Holiday Inn 405-685-4000
LaQuinta Inn 405-942-0040
Biltmore Hotel 405-947-7681

STAR MAN BROS. AUCTIONS INC.

1240 Royal Drive ~ Papillion, NE 68046
4901 E Falcon Drive ~ Mesa, AZ 85215
(402) 592-1933 ~ (480) 396-0380

Check Out Our Web Site...
www.starmanauctions.com

SHOP EQUIPMENT

Kwik Way 10' Magnaflux Test Bench
 Sunnen LBB1699 Precision Hone w/AG-300 Gauge
 Sioux Cylinder Working Table
 Sioux Valve Grinder
 System One Series 500 Recycling Parts Washer
 Shop Built Parts Washer w/Rotating Basket
 Air Products THF250EC Tig Welder
 Airco Easy Arc A/C Arc Welder
 Cougar Cleaning Systems Heated Pressure Washer
 Shop Built English Wheel/Planishing Hammer
 Robinair SPX Refrigerant Recovery/Recharging Machine
 Thermolyne 30400 Heat Treat Furnace
 Lear Siegler Nicad Battery Charger/Analyzer
 Kingsley KVE-7B Wire Marking Machine
 Kelstrom Compressor Washer PWC32677-100
 Delta 12" Disc Sander
 Craftsman 12" Band Saw
 Sunex 5000A Drill Press
 Turbine Engine Stand
 Several Recip Engine Build Stands
 US Tools Sheet Metal Shrinker
 US Tools Sheet Metal Stretcher
 Bench Top Sheet Metal Bead Roller
 Shop Lights
 Shop Bench/Cabinets
 Airless Paint Sprayer
 (8) Polly Shipping Containers
 Christie CASP-2000 Nicad Battery Tester
 4-Wheeler 200 c.c. Gas Engine
 Scroll Saw

AIRCRAFT JACKS & POWER TOW BARS

(3) Tronair 36" Aircraft Jacks, 10,000 Lb Cap
 Tronair 48" Aircraft Jack, 10,000 Lb Cap
 (2) McDermott 48" Aircraft Jacks
 (2) Support Systems 58" Aircraft Jacks, 6,000 Lb Cap
 McDermott 70" Aircraft Jack, 16,000 Lb Cap
 (3) Meyers 36" Aircraft Jacks
 Meyers 24" Aircraft Jack
 (3) B-5 24" Aircraft Jacks, 10,000 Lb Cap
 (2) Jack House 24" Aircraft Jacks
 (4) Shop Built 24" Aircraft Jacks
 Air Tug 18F Power Tow Bar w/10 HP Gas Engine
 Good Selection of Tow Bars for Various Aircraft Models

HYDRAULIC MULES, AIR COMPRESSOR & POWER CART



Danair Mdl 3005-500
 Skydrol Hydraulic
 Mule
 Piper/Nayak 5606
 Hydraulic Mule
 Sullivan Palaltek 25
 HP Air Screw
 Compressor 651-
 0015
 Foxtronics PR-2400-T7
 Power Cart

HAND TOOLS

(2) SPCT-100 Spark Plug Cleaner/Testers
 Champion Spark Plug Cleaner
 Parker Hand Bearer Set
 Parker Flaring Tools
 Pacific Scientific T-60 Cable Tensionmeter
 USAF Flying Wire Tensionmeter
 Micropress Tool
 Fabric Punch Tester
 Hand Rivet Squeezers
 Pneumatic Rivet Pullers
 Pneumatic Nut Runner
 Pneumatic Rivet Hammers
 Bucking Bars & Rivet Sets
 Clecos
 Hole Finders
 Rivet Cutters
 Rivet Shavers
 Valve Spring Compressor
 Snap On Torque Wrench
 Dial Indicators
 0-6" Micrometer Sets
 Standard Block Set
 Depth Mics
 Die Penetrant Kits

Various Reamers
 Engine Specialty Tools
 Chain Saws
 Dewalt Cordless Drill Sets
 Miniature Refrigerator
 Pliers, Wrenches & General Hand Tools
 Stud Removers
 Continental Oil Screen Thread Chasers
 Time Rite Indicators
 Bendix High Tension Lead Tester
 Magneto Synchronizer Boxes
 Various Voltmeters
 Shimpo Digital Tach DT-206
 Mitutoyo MU-Gauge Ultrasonic Test Set
 (20+) Cylinder Base Wrenches
 Crankcase Splitter
 Ball Hones
 Differential Compression Testers
 F-27 & Dash 7 Rigging Tools
 F-27 Tow Bars
 Dash 7 Engine Hoist
 PT-6 Engine Hoist
 Turbine Engine Specialty Tooling

ELECTRICAL INVENTORY

Good Selection of New & Used Electrical
 Inv to Include Landing Lights, Position
 Lights, Interior Lighting, Circuit Breakers,
 Reverse Current Relays, Carbon Pile
 Relays, Regulators, Solenoids, Motors,
 Switches, Position Sensors, Strobe Power
 Supplies, Blower Motors, Sealed Beam
 Lights, Connectors & Cannon Plugs,
 Inverters, Miniature Bulbs, Beacons,
 Flash Tubes, Electrical Cable, Battery,
 Heat Sinks, Micro Switches, Fuses, Etc.

CYLINDERS, CASES & CRANKSHAFTS

(800+) Includes Cylinders for
 Continental 65-520 & Lycoming 235
 thru 540
 (2) New Lycoming G0 Cases
 Crankcases for Various Models of
 Continental & Lycoming Engines
 Good Selection of Crankshafts &
 Camshafts

ENGINES

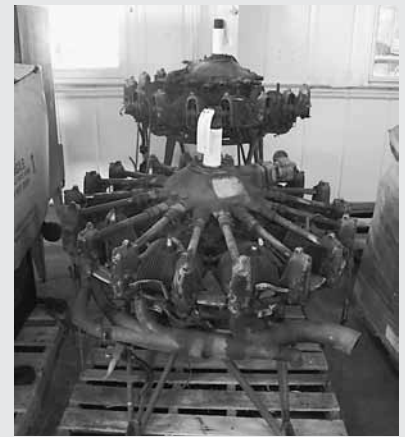


Continental O-470J Engine, 1,400 Hrs T.T.S.N., 350 Hrs S.M.O.H., No Prop Strike

Lycoming O-540-B2C5 Engine
 Lycoming O-540-B2B5 Engine
 Continental IO-470E Engine, 600 Hrs. S.M.O.H. w/Logs
 Continental IO-520BA Engine, 1,200 Hrs w/Logs
 Continental O-300D Engine, 2,200 Hrs T.T.S.N., Normal Pull-off
 (2) Lycoming O-320 Engine
 Lycoming O-320 Engine, Crash Damage
 (2) Lycoming O-290-D2 Engines
 Lycoming IO-360-E1A6D Engine
 Lycoming O-145 Engine
 Franklin 6-Cyl Engine Attached to Hiller Transmission
 Lycoming R-680 Engine (Minus Nose Case)

(2) Disassembled Franklin Engines

NOTE: We expect more engines by Sale Day!



2) Lycoming R-680 Engines on Mounts

NEW CONTINENTAL & LYCOMING ENGINE INVENTORY

A Very Good Selection of New Continental & Lycoming Engine Inv to Include (20+) Continental O-470-11/E185-11 Crankshaft Bearings P/N ASC-40644, (20,000+) Valve Seats, Mag Gears, Continental Prop Gears, Bearings, Push Rods & Tubes, Starter Drive Gears, Piston Rings, Fuel Injection Inv, Crossover Tubes, Valve Guides, (100+) Pistons, Intake Tubes, Breather Tubes, Connecting Rods, Seals, Dipstick Housings, Clamps, Fuel Pump Drive Gears, Oil Filter Adapters, Bushings, Thru Bolts, Fuel Injection Lines, A65-520 Oil, Filter Adapter Kits, Lifters, Oil Screens, Continental IO-240 Inv, Clamps & Hardware, Rocker Box Covers, Tannis Engine Heaters, Etc.



NOTE: There will be a large amount of Engine Inventory so come prepared!!

LYCOMING O-145 ENGINE INVENTORY



Large Selection of New & used Lycoming O-145 Engine Inventory to include Crankshafts (Flanged & Geared), Camshafts, Pistons, Gears, Piston & Rocker Arm Pins, Rocker Arms, Rocker Box Covers, Accy Cases, Sumps, Baffling & Covers, Valve Seats & Guides, Bearings, Push Rods & Push Rod Springs, Bushings, Plates, Studs, Housings, Gaskets, Valve Hoses, Hardware, Etc.

Housings, Gaskets, Valve Hoses, Hardware, Etc.

ACCESSORIES



(100+) Continental Fuel Injection Pumps
 (90+) Continental Fuel Injection Systems
 Flow Dividers
 Several Hundred Starters to Include Standard & Lightweight, Some O/H & New

Dukes, Airborne, Bendix & Lear Fuel Pumps
 Bendix & Slick Mag Cores
 Good Selection of Magneto Repair Inv
 Alternators & Generators of Various Amps
 Good Selection of New Alternator & Generator Repair Inv to Include Housings, Armatures, Fields, Bands, Diodes, Hardware, End Caps, Etc.



Starter/Generator Cores
 Various Prop Governors
 Carburetor for Apposed & Radial Engines
 Fuel Injection Servos
 Eiseman & Misc Radial Engine Mags
 Radial Engine Starters & Generators
 Wet & Dry Vac Pumps
 Good Selection of Carburetor Repair Inv

Several New & Used Starter Drives & Clutches
 Continental & Lycoming Oil Coolers
 Turbo Chargers
 Turbo Charger Waste Gates & Controllers
 New Fuel Injection O/H Inv
 Primer Lines
 NOTE: There will be (1,000+) Accessories that will include NEW, O/H & A/R Units

USED ENGINE INVENTORY

Engine Gears, Thousands of Engine Legs & Lord Mounts, Connecting Rods, Oil Pump Housings, Lifters & Tappets, Oil Filter Adapters, Accy. Cases, Oil Sumps, Intake Tubes, Accy Mounting Pads, Pistons, Geared Lycoming Accy Drives, O-200 Kidney Sumps, A-65/85 Intake Spiders, Oil Cooler Backing Plates, Accy Mounts, Fuel & Oil Lines, Clamps, Crossover Tubes, Various Radial Engine Inv, Valve Springs & Seats, Push Rods & Tubes, Intake Clamps, Dipstick & Housings, Piston Pins, Hardware, Accy Drive Gears, Thru Bolts, Studs, 100 Amp Alternator Drive Gears, Etc.

PROPELLERS

(2) Hamilton Standard 2D30 Props
 Hamilton Standard 12D40 Prop
 McCauley 7863 Fixed Pitch Prop
 Sensenich M74DM Fixed Pitch Prop
 Sensenich M74CK-4 Fixed Pitch Prop
 (2) Hartzell HC82VL-2C Constant Speed Props
 Hamilton Standard 23D40 Prop Hub
 Various Prop Spacers
 Prop Blades
 Prop Hubs & Inv

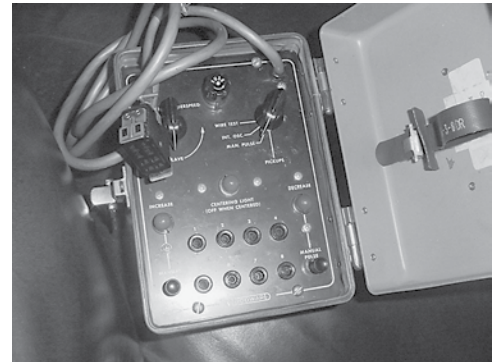


TURBINE & SPECIALTY TEST SETS

Marsh Aviation Garrett EGT Test Set 287656
 Marsh Fuel Controller Test Set

Setra Mdl 370
 Digital Pressure Gauge

Consolidated AEC-2000-1
 SAS Computer Calibrator

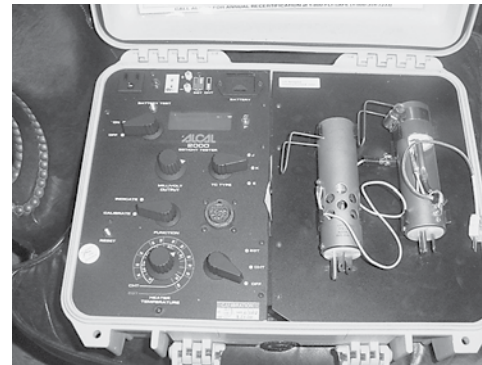


Woodward Prop Synch Tester 213600

TURBINE INVENTORY

(80+) PW-100 Blades, O/H
 (350) PT-6 PT & CT Blades, O/H
 PT-6 Rotor 3042701, O/H
 GE Spacer 5004307-03 & 656818
 PT-6 & PW-100 Inventory to Include Gear Boxes, Ring Gears, Anti-Ice Valves, Bearings, Transfer Tubes, Insulation Blankets, Filters, Valves, Harnesses, Small Parts, Hardware, Etc.
 Various Expendables & Rotables for JT-15D, TPE-331, RR Spey, JT-8D, JT-9D, PT-6-65 & CFM-56.

GE Fuel Nozzles
 Allison 250 Fire Shields
 Allison 250 Small Parts



Alcal 2000 EGT/CHT Test Set

Lamar TE-04 MCU Test Set

Barfield Capacitance Test Set Adapter Cable

Janitrol Heater Decay Test Set

AVIONICS TEST EQUIPMENT

IFR RD-300 Radar Test Set
 IFR ATC-600A Transponder Ramp Test Set
 IFR NAV-750B Test Set
 IFR ATC-1200Y3 Transponder/DME Test Set
 TIC T-23A Transponder Ramp Test Set
 JC Air 22H1A Comm Test Panel
 JC Air 32V1A Nav Test Panel
 JC AIR 42D1A DME Test Panel
 Collins ASI 200-2A Test Box
 Collins ASI 200-1 & -3 Adapters
 King Autopilot Test Set 071-5010-00
 ENT Corp Pitot Static Test Set



Air Lab Inc ARINC-429 Transceiver Tester

Wulfsberg Flite Fone Test Set 400-0126-100

Bird 43 & 611 Watt Meters
 HP 432A Power Meter
 HP 8900B Power Calibrator
 Frequency Counters

Kustom Electronics 4100RF Signal Generator
 HP 8660A Signal Generator
 WF-0055 Dummy Load Coupler

Tektronics 465 Oscilloscope
 King VCO Sweep Generator
 Leader LFM-36A Flutter Meter

Capacitance & Volt Meters
 Aeromotive Equip TS-488A/Up Echo Box



IFR 1200S AM/FM Com Analyzer

LANDING GEAR, WHEEL, BRAKE & EXHAUST

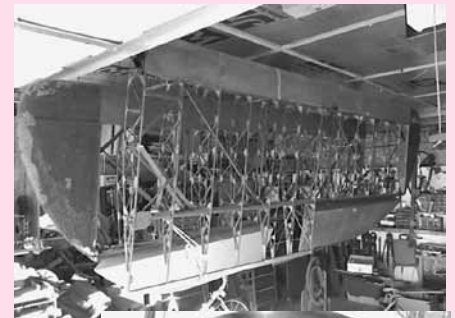
Comanche 250 Nose Gear
 Bellanca MLG Assys & Inv
 Various Main & Nose Gear Inv for Cessna, Piper & Beech Aircraft
 Firewall Fittings
 Retract Rods
 Bonanza Nose & MLG Assys
 Axles
 Good Selection of 5, 6, 8 & 10" Wheels
 Brake Calipers & Discs
 Good Selection of New Cleveland Brake Linings
 New Brake Rivets
 New Cleveland Brake Discs
 New Wheel Bearings
 Landing Gear Scissors & Drag Links

New 8.50-10 Tires
 Tire Tubes
 T-6 Tail Wheel Struts
 T-6 Brake Inv
 Tail Wheel Inv
 Turbine Exhaust
 Apache Exhaust
 Good Selection of Mufflers, Risers & Clamps for Various Aircraft (Some New)
 Landing Gear Barrels
 Landing Gear Actuators
 Brake Master Cylinders
 Landing Gear Motors
 Varga Landing Gear
 New Cessna Nose Strut Repair Kit

CONTROL SURFACES

(40-50) Control Surfaces for Cessna, Piper & Beechcraft to Include Flaps, Ailerons, Rudders & Elevators

PROJECT AIRCRAFT & FUSELAGES



Heath Parasol Project Aircraft, Partially Complete w/Wings, Control Surfaces, Some Instruments, On Gear w/Plans. Continental A-65 Engine Will Sell Separate from Airframe.

Stinson 108 Fuselage on Gear w/Franklin Engine, Prop, Wings & Surfaces

Pietenpol Fuselage on Gear

Bellanca Fuselage

Culver Cadet Fuselage

(4) Bellanca Wood Wings



PAYMENT TERMS: Cash, Certified Funds, or Company Check ONLY if accompanied by Bank Letter of Guarantee!! NO EXCEPTIONS! Wire Transfers will be accepted with a 20% non-refundable deposit day of sale in one of the forms listed above. We also accept MasterCard and Visa with an additional 3% Buyers Premium applicable.

AIRFRAME INVENTORY

Airframe Inventory to Include New & Used Lord Mounts, Bracket Air Filters, Cowling for Single & Twin Aircraft, Air Boxes, Spinners & Backing Plates, Wing Tips & Control Surface Tips, Seats, Hydrolocks, Rudder Peddle Inv, Control Yokes, Seat Rails, Hinge Stock, Fuel Tanks, Air Boxes, New PA24-150/160 Windshield, Vac Filters, Spark Plugs, Static Wicks, King Air Flap Track, Engine Mounts, Wheel Pants, Control Cables, Tail Cones, Hoses & Lines, Inspection Panels, Instrument Panels, Control Surfaces for Various Aircraft, Tach Cables, Flying Wires, Push/Pull Rods, New Gill Batteries, Seatbelts, Fuel Caps, Door Latches, Steps, Cowl Flaps, Cargo Nets, Bonanza Glass, Various Bellanca Inv, Glare Shields, Seals, Gaskets, Pitot Tubes, Trim Tabs, Pulleys & Cables, Torque Tubes, Stearman Piece Parts, Etc.

Corporate Airframe & Rotable Inventory for Learjet, Falcon & King Air to Include Switches, Brakes, Landing Gear Inv, Tubes, Panels, Sensors, Motors, Expendable Inv, Interior Inv, Tires, Etc.

AVIONICS & INSTRUMENTS

Good Selection of Inventory for both Corporate & General Aviation Aircraft to Include KI-208 Indicators, Turn & Banks, Altimeters, Rate of Climb Indicators, New Garmin Annunciator Panels, Air Speed Indicators, Hydraulic Pressure Gauges, Tachometers, Turbine Temp Indicators, ELT Switches, Various Antennas, Oil Temp Indicators, VIR 351, Various NAV/Comms & Transponders, DME's, Headsets, Coax Cables, Switching Panels, Controllers, Autopilot Servos, Etc.

MANUALS

Good Selection of P&W 100 O/H & Maintenance Manuals, PT-6 O/H Manuals, Allison 250 O/H Manuals, Inspection & Parts Manuals, Lycoming O/H & Parts Manuals, Continental O/H & Parts Manuals, Magneto Repair Manuals, Packet O/H Manual, Beech & Cessna Parts Manuals, Accessory O/H Manuals
Microfiche & Microfiche Readers

T-6 & VARGA INVENTORY

Several T-6 Ailerons, Elevators & Rudders	(2) Varga Vertical Stabilizers
(30+) T-6 Canopy Sections	(5) Varga Rudders
Several T-6 Tail Struts	Varga Landing Gear
T-6 Brake Inv	Varga Windshields & Windows
Various T-6 Small Parts	New Spar Material
(8) Varga Wings	Several Varga Skins & Ribs
(4) Sets of Varga Ailerons & Flaps (Some Rebuilt)	(3) Varga Center Sections
	Various Varga Small Parts
	New Varga Inventory
(6) Varga Horizontal Stabilizers (Some w/Elevators Attached)	

AUCTIONEER'S NOTE: This Fall Consignment Auction is going to have a good mixture of New & Used Inventory from Various Consignors along with El Reno Aviation's New Engine Inventory. There is also a Very Good selection of Engines, Shop Equipment, Accessories, Etc. This is a partial listing as we are receiving shipments daily. Check our website www.starmanauctions.com for updates on photos and additions.

Everything sells "AS IS, WHERE IS" with no warranties implied or expressed. Neither the auctioneer nor owners shall be liable for any incorrect description, fault, or defect. Everything positively sells to the highest bidder. Payment must be made in full day of sale. No property removed until settled for. Auctioneer is not responsible for accidents or stolen property. All counts are approximate. Announcements made day of sale takes precedence over all printed material.

PROXY BIDS: If you are unable to attend this auction we will bid on your behalf. For more info visit our web site at www.starmanauctions.com and click on Upcoming Auctions and scroll down to the Proxy Bid Section. Complete form and fax to (402) 592-2327 or call Steve at (402) 681-6456.

LOADING & REMOVAL: Once an item is sold the winning bidder is responsible for its removal. Any cost responsibility and risk of removal of purchases remain with the buyer. Removal may begin after payment in full and must be completed by the posted deadlines. NO EXCEPTIONS OR EXTENSIONS! Buyers will be responsible to arrange their own trucking.



1240 Royal Drive ■ Papillion, NE 68046
(402) 592-1933
www.starmanauctions.com

Return Service Requested

PRSRT FIRST CLASS
U.S. POSTAGE
PAID
MAIL U.S.A.

First Class



FRIDAY, SATURDAY & SUNDAY
NOVEMBER 9th, 10th & 11th, 2012
Starting at 9:00 A.M. ALL THREE DAYS!

ANNUAL FALL CONSIGNMENT AUCTION

SALE ORDER:

FRIDAY - November 9th: Landing Gear, Wheel & Brakes, Exhaust, Wings, Fuselages, T-6 & Varga Inventory, New & Used Airframe, Electrical Inventory & Hardware.

SATURDAY - November 10th: Propellers, Accessories & Accessory Repair Inventory, New & Used Engine Inventory, Engines & Cylinders. NOTE: Project Aircraft, Shop Equipment, Hand Tools, Turbine & Specialty Test Sets will sell at 1:00 PM Saturday.

SUNDAY - November 11th: Finish Engine Inventory, Crankshafts, Crankcases, Turbine Engine Inventory, Avionics, Avionics Test Equipment, Instruments & Manuals.



1240 Royal Drive ~ Papillion, NE 68046 ~ 4901 E Falcon Drive ~ Mesa, AZ 85215
(402) 592-1933 ~ (480) 396-0380