

**ABSOLUTE
AUCTION!**

AVIATION

AUCTION

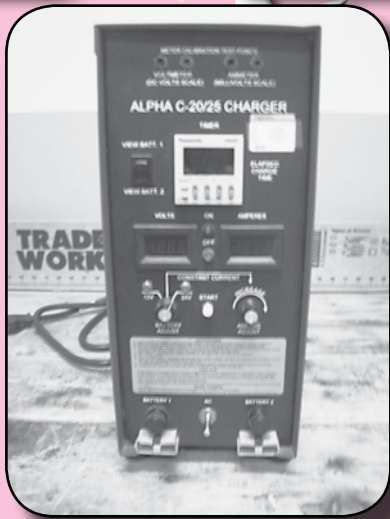
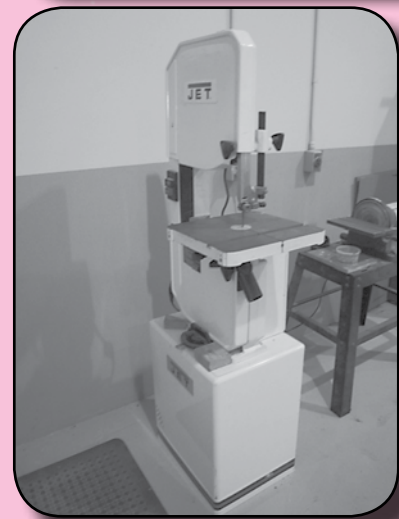
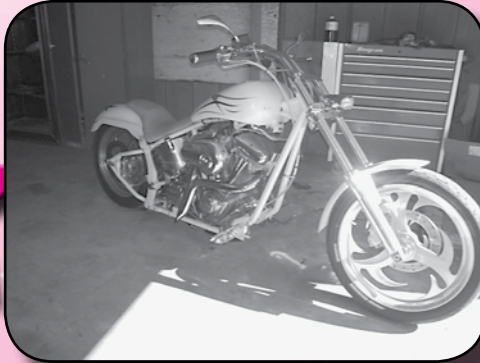
FRIDAY ~ January 10th, 2014 •

Starting at 9:00 A.M. Local Time

By order of U.S. Bankruptcy Court

AVANTAIR

Auction Being Held At:
13000 Automobile Blvd., Suite 501
Clearwater, Florida 33762
(Approx. 1-Miles from Clearwater/St. Pete Airport)



PRSR FIRST CLASS
U.S. POSTAGE
PAID
MAIL U.S.A.

First Class

**STARMAN BROS.
AUCTIONS INC.**

1240 Royal Drive • Papillion, NE 68046
(402) 592-1933

www.starmanauctions.com

Return Service Requested

SALE SITE NUMBER:

**Steve Starman - (402) 681-6456 or
Scott Moore - (402) 681-3652**

**OPEN HOUSE: Thursday, January 9th
from 8:30 A.M. to 5:00 P.M.**

**A 5% BUYER'S PREMIUM WILL APPLY TO ALL
PURCHASES AT THIS AUCTION.**

AIRLINE CONNECTIONS: Most Major Airlines into Tampa Int'l
Airport (Approx. 18 Min. Drive) or Allegiant Air, Sun Country &
Vision Airlines Serve Clearwater/St. Pete Int'l Airport.

HOTEL HEADQUARTERS

Holiday Inn Express 13625 Icot Blvd. Clearwater, FL 33760
(727) 536-7275
Ask for \$75 Avantair Auction Rate

OTHER HOTELS:

Hampton Inn & Suites
4050 Ulmerton Rd.
Clearwater, FL 33762
(727) 572-7456

Comfort Inn & Suites
3910 Ulmerton Rd.
Clearwater, FL 33762
(727) 573-3334

Ramada-Clearwater Airport
3580 Ulmerton Rd.
Clearwater, FL 33762
(727) 202-6868

LaQuinta Inn & Suites-Clearwater Airport
3301 Ulmerton Rd.
Clearwater, FL 33762
(727) 572-7222

There are Several Other Hotels within 3-Miles of St. Pete/Clearwater Airport.

**STARMAN BROS.
AUCTIONS INC.**

1240 Royal Drive ~ Papillion, NE 68046
4901 E Falcon Drive ~ Mesa, AZ 85215
(402) 592-1933 ~ (480) 396-0380

Check Out Our Web Site...
www.starmanauctions.com



VEHICLES & GROUND SUPPORT EQUIPMENT



- 2005 GMC Envoy, Vortex 4200, 4.2 Liter V-6 Engine, Auto Trans., 4-Wheel Drive, A/C, Power Windows & Locks, Cruise, AM/FM/CD
- 2004 Ford Taurus SE, 4-Door, 3.0 Liter V-6 Engine, Auto Trans. w/Overdrive, Power Windows & Locks, Cruise, A/C, AM/FM
- 2001 Chevy Malibu, 3.1 Liter V-6 Engine, Auto Trans., Front Wheel Drive, A/C, Power Locks & Windows, Cruise, AM/FM/Cassette, Cloth Interior
- 2003 Subaru Outback, 2.5 Liter 4-Cyl Engine, Auto Trans., AWD, Power Locks & Windows, Cruise, AM/FM/CD, Cloth Interior
- 2002 Ford F-150XL Pickup w/Extended Cab, 4.2 Liter V-6 Engine, Auto Trans. w/Overdrive, AM/FM/Cassette, Has Fuel Tank in Box w/12V DC Pump, (Truck may need some work)



- Harlan Tug, 4,000 DBP, Ford 6-Cyl Propane, Auto Trans.
- Clark Bag Tractor, 4,000 Lb. DBP, 6-Cyl Gas, Auto Trans.
- Toyota Bag Tractor, 4,000 Lb. DBP, Diesel Engine, Auto Trans.



- Kubota Mdl BX-2200 Tug Tractor, 4-Wheel Drive, Diesel
- Forklift Engine Hoist Attachment
- Mark Industries Electric Scissor Lift, 8' x 4', 18' Max Height
- Wollard Mdl MLPH-307 Tow-A-Round Air Stairs (2) 5' Maintenance Access Stairs
- Piaggio P-180 Tow Bar
- Tronair Snap Back Tow Bar
- Misc. GA Aircraft Tow Bars

- (2) Hobart GPU-400 Ground Power Units, Mdl 6T28-400CL, 28-Volt, 400 Amp



- Hobart GPU-600 Ground Power Unit, 28-Volt, 600 Amp, Mdl GT200-600L



- (5) B-1 Maintenance Stands



- Tronair Mdl 04-6029-5111 (B-4 Style) Scissor Lift Maintenance Stand, 5,000 Lb. Capacity

- Clark Mdl C G C 2 5 Forklift, 5,000 Lb., Propane, Hard Rubber Tires, 18' Triple Stage Mast



- Carry On Single Axle Bumper Pull Trailer, 5' x 10'

MOTORCYCLE & GOLF CART



- Custom Motorcycle, Revtech Twin Engine w/ Diamond Cut Cylinders, Mono Shock Bourget Style, 5-Speed Trans., Bullet Wheels, 21" Front Wheel, 240 Rear Wheel, Raked Out Approx. 30 degree, dual Disc Brakes



- Yamaha Electric Golf Cart & Charger

AVIONICS TEST SETS & TOOLS

- Aeroflex IFR-6000 Test Set for Mode A/C/S Transponder, DME, TCAS < ADS-B & TIS Avionics System Testing
- (2) Aeroflex IFR-4000 Nav Com Test Sets



- Barfield DPS-350 Digital Pitot Static Test Set
- ASI-CTS-9/10 Universal ATR Breakout Box
- (2) Dukane Seacom CT-200 Beacon Test Sets
- Dukane Seacom TS-200 Ultrasonic Test Set ELT Battery Test Set
- Extch Mdl 380260 Digital Megohmmeter
- (8) Universal Portable DTU-100 Data Transfer Units
- BK Precision Mdl 1735A DC Power Supply

- DFW Instrument Corp Mdl SCZ-106 Master Sight Compass
- Fluke 87 Multimeter
- BK Precision Mdl 830C Capacitance Meter



- Weller Mdl WRS-3000 Solder/De-Soldering Station
- Various Other Weller Soldering Tools
- Simpson 260 Volt/OHM Meter
- Pelican 1000 Crimper
- DMC GMT-232 Crimper
- DMC AF8 Crimper
- Amp Crimper
- Central Hydraulics Wire Crimper
- Megger Mdl MIT40X Insulation Tester

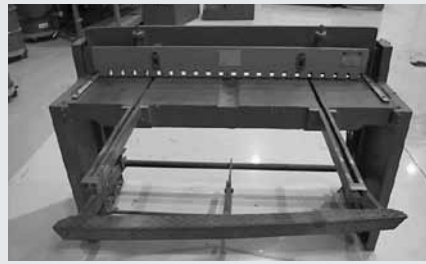
SHOP EQUIPMENT



- Ingersoll Rand Mdl UP6-7.5-125 Rotary Air Compressor, 125 PSI, New in 2010, 7.5 HP, 80-Gallon Tank



- Central Machinery 30" 3-in-1 Sheet Metal Machine Press, Brake Roller
- (5) Engine Hoists, 2 & 3-Ton, Various Manufacturers
- 20-Ton Hydraulic H-Frame Shop Press
- OTC 10-Ton Bench Top Hydraulic Press
- Dayton Mdl DF-16 Heavy Duty 16-Speed Drill Press
- Central 16-Speed Floor Mdl Drill Press
- Bench Top Drill Press
- Dayton Mdl 3Z849 Bead Blast Cabinet 30"x 23"x 22"
- Dayton 6" & 9" Belt & Disc Sander
- Husky Pro Mdl VT631502AJ Portable Air Compressor, 5-HP, 26-Gallon Vertical Tank
- Westward Portable Air Compressor, 2-HP, 26-Gallon Vertical Tank
- (3) Frigidaire Window Air Conditioning Units Modified for Aircraft Cabin Air Conditioning
- (2) New Frigidaire Air Conditioning Units
- (3) Meyers & Misc Tire Bead Breakers



- Central Machinery 52" Sheet Metal Shear, 20 Gauge Capacity



- Grizzly 48" Finger Brake
- (6) Tronair Mdl 02-7812-0110 Main Gear Tripod Jacks, 5-Ton Capacity, Single Stage, 54" Closed, 94" Fully Extended
- (5) Tronair Mdl 02-0517-0140 Nose Jacks, 5-Ton Capacity, Multi-Stage, 17" Closed, 46" Fully Extended

Note: There may be additional Tronair Jacks available, however some are still under aircraft at this time, call for information.

- Tronair Engine Compressor Washer



- (2) Tronair 2-Gallon Fluid Dispensers Mdl 06-5022-6500



- Jet 14" Wood/Metal Vertical Band Saw

- Various 55-Gallon Barrel Dollies & Pumps

- Mechanics Creepers & Stools



- Starline Mdl SL-500 Hydraulic Mule, 5,000 PSI
- Briggs & Stratton 5500 Watt Portable Generator
- (5) Safety Kleen & Misc Parts Washers
- Branson Mdl 8510 Ultrasonic Parts Washer
- Advance Avenger Mdl 3210D Drive-A-Round Hanger Floor Scrubber w/Charger
- New Hartzell Prop Table, 8' Long



- (5) Double Sided Roll-A-Round Prop Stands
- (3) Double Bottle 2-Wheel Carts Including Tronair
- (7) Single Bottle 2-Wheel Carts
- Oxygen & Nitrogen Regulators, Gauges & Hoses
- Several Engine Oil Drain Pans & Containers
- Several Quartz & Fluorescent Shop Lights
- Tronair Axle Jack w/Enerpac Pump
- 5-Ton Floor Jack
- Freon Recovery Vacuum Cart
- Fill Rite 12-Volt DC Barrel Pump
- Fill Rite Series 700V Transfer Pump, 115V AC (New)
- Several Chicago 28" High Velocity Floor Fans
- Several Shop Vacs
- Misc Bench Grinders & Vises
- Air Hoses & Air Pigs
- Banding Machine & Tools
- (6) Misc Tool Boxes Including Craftsman & Snap On

LADDERS

- (3) 8' Louisville Aluminum Double Sided Ladder
- (2) 8' Double Sided Fiberglass Maintenance Ladders
- (2) 4' Louisville Aluminum Double Sided Maintenance Ladders
- Approx. (26ea) Fiberglass Maintenance Ladders will include 2', 4', 6' & 8', Some are double sided.
- Cotterman 8' Roll-A-Round Maintenance/Parts Room Ladder
- Little Giant Ladder
- Various Other Ladders

FIREPROOF CABINETS

- (2) 55-Gallon Fireproof Cabinets
- 120-Gallon 2-Door Fireproof Cabinet
- 60-Gallon 2-Door Fireproof cabinet
- 30-Gallon 2-Door fireproof cabinet
- 22-Gallon Fireproof Cabinet
- (3) 45-Gallon 2-Door Fireproof Cabinet
- Several Fireproof Rag Containers
- (2) Durham 2-Door Bottle Cabinets for Oxygen, Nitrogen, Etc. Bottles
- Hazmat Spill Pallets
- Spill Kits

NICAD BATTERY CHARGERS / DISCHARGERS

- (4) Power Products Mdl Alpha C-20/25 NiCad Battery Chargers



- (5) Power Products Mdl Beta D-50 NiCad Battery Discharge Units



A 5% BUYER'S PREMIUM WILL APPLY TO ALL PURCHASES AT THIS AUCTION.

TEST SETS & TOOLS

Manchida Flexible Fiber Optics Borescope & Mdl RH-24N Light Source
 ACES Mdl 2020 Turbo Pro balancer Analyzer
 Nortec Mdl 23ST Mini Eddy Scope
 (3) Sprague Mdl CTR-GA-150 Gripper Electronic Cable Tensiometer
 (3) Pacific Scientific Mdl T-5 Cable Tensiometers
 Chatillon LG-100 Force Gauge
 (10 Chatillon Spring Scales
 (2) Tronair Mdl 14-6831-6010 Strut Pressure Gauge 0-3000 PSI
 Mdl 8874 High Pressure Gauge 0-4000 PSI
 Gammon Mdl B/2HB Anti-Ice Additive Test Set
 Mini Monitor Fuel Contamination Test Kit
 Tire Gauge 0-160 PSI
 Starrett 798 Digital Protractor
 Mitutoyo PRO-360 Digital Protractor
 Various Torque Wrenches, Pressure Gauges, Flaring Tools, Heat Gun, New & Used Grease Guns,
 ACK-2 Lubrication Accy Kit, Clecos, Misc P&W Tools, Misc Wrenches & Sockets, Etc.

PIAGGIO P-180 ROTABLES NEW & OVERHAULED

(2) Overhauled Environmental Control Units, Heat Exchanger, Nose Wheel Assys, Check Valves, DC Generator Control Panels, Temp Sensors, Strobe Power Supplies, Anti Collision Lights, Downlock Harness, Pintle Pins, Several New Nose & Main Tires, Fuel Qty. Transmitters, Emergency Power Units, Static Inverters, Temp Sensors, AC Control Units, Cabin Temp Sensors, Master Caution ICD's, Engine & Trim Control Panels, Flap Tracks, Exhaust Stacks, Engine Mounts, Flap & Flap Track Fairings, O2 Bottles, Several Isolators, Relays, Dimmers, Transmission Shafts, Power Supplies, Engine Oil Access Panels, AC Blower Motors, Cabin AC Blowers, AC Compressors, Light Power Supplies, Oil Press Transducers, Flaps Inbound & Outbound, Ailerons, Elevators, MLG Door, Etc.



NOTE: For a Complete List by Part Number, Description & Paperwork go to www.starmanauctions.com and Click on Upcoming Auctions.

PIAGGIO P-180 ROTABLES AS REMOVED

Nose Landing Assy., (2) Main Landing Gear Assys., MLG Actuators, Nose Steering Actuators, Shock Absorbers, MLG Drag Braces, Several Brake Assys., Several Nose Wheels, Temp Modulating Valves, Temp Sensors, Engine Fire Bottles, Aileron Trim Actuators, Ice Vane Actuators, Steering Potentiometers, Anti-Ice Control Boxes, Primary Outflow Valves, Shutoff Valves, Temp Controllers, DC Motors, Press Monitor Units, Aerial Warning Generators, Aircraft Batteries, Pneumatic De-Icers, Press Regulators, DC Generator Controls, Pre-Coolers, Rudder Trim Actuators, Master Caution Annunciator Panels, AC/DC Power Supplies, Center Control Panels, Light Control Panels, Copilot Master Caution Annunciators, Throttle Control Panels, Dimmer Control Panels, EFIS Panels, Engine & Trim Control Panels, Wing & Control Surface Leading Edges, Freon Controllers, Windshields, Exhaust Stacks & Ducts, Snubbers, Pitot Tubes, Ice Detectors, Pressure Switches, Pressure Regulators, Main Wing Anti-Ice Valves, Flap Actuators, Several Flap Transmission Shafts, Flap Jack Screws, Press Transducers, Pitch Trim Actuators, Ice Vane Actuators, Linear Actuators, AC Motors, Elevator Trim Actuators, AC Compressors & Motors, Flap Drive Unit, Press Transducers, Upper & Lower Cowl Assys., Entry Doors, Spinners, Flaps, Ailerons, Leading Edges, Rudder, Trim Tabs, Landing Gear Doors, Aft Cowlings, Firewalls, Fairings, Tubes, Flap Tracks, Etc.

NOTE: For a Complete List by Part Number and Description go to www.starmanauctions.com and Click on Upcoming Auctions.

SEATS, CABINETS & INTERIOR INV.

Various Cabin Seats, Pilot & Co-Pilot Seats, Good Selection of Cabinets, Jump Seats, Potty Tanks & Valves, Several Seatbelts & Inertia Reels, Several Lift Vests, Coffee Pots, Fire Extinguishers, Crew O2 Masks, Goggles, Sun Visors, Interior Tables & Dividers, Galley Cabinets, Interior Panels, Seat Tracks, Etc.

PT6A-66 ENGINES

PT6A-66 Engine S/N PCERK-0208, TSN-6,583.6 Hrs, CSN-5,012 Hrs, TSO-2,625.2 Hrs, CSO-1,990 Hrs, Has Log Books
 PT6A-66 Engine S/N PCERK-0207, TSN-6,583.6 Hrs, CSN-5,012 Hrs, TSO-2,625.2 Hrs, CSO-1,990 Hrs.

P&W PT-6 ENGINE INVENTORY

Overhauled Items Include (3) Over Speed Governors, Fuel Boost Pumps, Several O/H & Bench Checked Fuel Nozzles, (12) Tach Generators, Fuel Filter Housings, Large Selection of New Fuel Filters, Fuel Control Units, Engine Driven Fuel Pump, Hardware

As Removed Items Include Over Speed Governors, Prop Governor, Fuel Flow Transmitters, Ignition Exciters, Main Fuel Boost Pumps, Tach Generators, Fuel Nozzles, Fuel Shut-Off Valves, Etc.

NOTE: Complete Listing available on our website.

PIAGGIO P-180 FUSELAGE



Piaggio P-180 (Avanti II) Fuselage N-162SL, S/N 1130 This Aircraft was going through a D Check so it is basically a bare fuselage. Some of the major components will be sold in the auction separate from the fuselage. I.E. Engines, Control Surfaces, Doors, Seats, Some Avionics, Etc. Will have Log Books.

LARGE SELECTION OF NEW AVIONICS & ELECTRICAL INV.

Connectors, Terminals, Battery Cable, Wiring, Heat Shrink, Back Shell Connectors, Canon Plugs, Hi-Line Cabinets, Splices, Etc.

A 5% BUYER'S PREMIUM WILL APPLY TO ALL PURCHASES AT THIS AUCTION.

NEW & O/H AVIONICS & INSTRUMENTS



Large Selection of O/H & New Avionics & Instruments. All With Paperwork including: AFD-3010E Adaptive Flight Displays, Flight Guidance Computers 822-2012-036, DCP-3030 Display Control Panel, DCU-3001 Data Concentrator Unit, AHC-3000 Heading Alt Computers, VHF-4000 Transceivers, VHF-22C Transceivers, ADC-3000 Air Data Computer, FMC-3000 Flight Management Computers, RTU-4200 Radio Tuning Units, MPU-85C Multi-Function Displays, TDR-94 & 94D Transponders, MPU-85N Multi-Function Displays, APC-65A Autopilot Computers, Weather Radar Panel 622-8393-014, CTL-32 & CLT-62 Nav & ADF Controls, Fan Monitor Modules, EFD-74 Flight Directors, RCP-65 Remote Compensator Panels, HPU-74A HSI Processor Units, VIR-32 Receivers, DME-42, TDR-90 Transponders, SVO-65 Autopilot Servos, Avionics Fans, KMH-920 TCAS, KSA-372 Servos, UNS-1K Nav Computers, Cockpit Voice Recorders 2100-1020-00, Fuel Quantity Ind., Turbine Temp Ind., Cabin Temp Controllers, Turbine Speed & RPM Ind., Temp Pressure Ind., Fuel Flow Ind., Cabin Pressure Controllers & Selectors, Encoding Altimeters, Vertical Gyros, ELT's, ELT G Switches, RMI Ind., Magnetic Compasses, TAWS Controllers, Clocks, Vertical Speed Ind., Various Antennas Including GPS, Etc.

NOTE: For a Complete List by Part Number, Description & Type of Paperwork go to www.starmanauctions.com and click on Upcoming Auctions.

AS REMOVED AVIONICS & INSTRUMENTS

Includes Electronic Flight Displays, HSI Processors, EFD-8510 Electronic Flight Displays, ALT-55 Transceiver, TDR-90 Transponder, Directional Gyros, VIR-32's, Remote Compensation Units, DME-42, CTL-32 Controls, ADF-462 Receivers, Multi-Function Processor Units, Display Select Panels, TDR-94 Transponder, Air Data Computers, VHF-22C Transceivers, CTL-22 Controllers, Nav-4000 Receiver, VHF-4000 Transceivers, Audio Control Panels, Air Data Display Indicators, Stall Warning Computers, Angle of Attack Transmitters, Vertical Speed Ind., Fuel Quantity Ind., Combined Inds., Turbine Temp Inds., Data Transfer Units, Oil Press/Temp Ind., Flight Data Recorder, ELT Transmitters, Autopilot Control Panels, ELT's, Magnetic Compasses, Etc.

NOTE: For a Complete List by Part Number & Description go to www.starmanauctions.com and Click on Upcoming Auctions.

NEW AIRCELL WI-FI INVENTORY

(3) New Aircell Mdl ATG-5000 High Speed Internet Transceivers

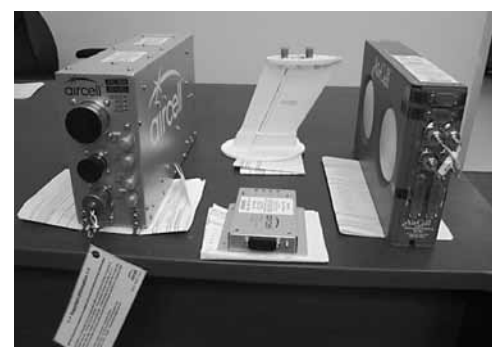
(2) Aircell P/N P12083 Rev N Routers

(3) Aircell P/N P14126 Rev B Modules

(10) Aircell P/N P12949 (ATG) LRU Antennas
 Several ATG-5000 New Install Kits w/ Paperwork

Complete As Removed Wi-Fi System Consisting of ATG-5000 Transceiver, Router & Module, All Mounted on Tray

(3) As Removed Aircell ST-3100 WI-FI Receivers



NEW CONSUMABLES & EXPENDABLES

There are Approx. 2,400 Line Items of Consumables & Expendables to Include Miniature Lamps, Lamps, Taxi Lamps, Landing Light Lamps, Static Wicks, Clip Nuts, Large Selection of Circuit Breakers, Rod Ends, Bushings, Main Axle Nuts, Firewall Seal, Several New Tires, Several Wheel Bearings, Pin Connectors, Harnesses, Switch Assys., Handles, Rubber Hose, Heat Shrink Tubing, Fuses, Valve Cores, Brake Attach Bolts, Large Selection of 80- Numbers Including Doublers, Hinges, Fittings, Switch Assys, Cabin Door Seal, Brackets, Tubes, Circuit & PC Boards, Wing Temp Sensors, Connecting Rods, Door Handles, Pin Assys, Door Cable, Plugs, Seals, Buffers, All Types of Bushings, Rod & Lever Assys, Tubes & Lines, Harnesses, Brackets, Fitting Assys, Heat Shields, Spacers, Adapters, Collector Assys, Rollers, Spacers, Covers, Service Bulletin Kits, Bonding Plates, Angle Brackets, Other Expendables NLG Drag Link Brackets, Red Lenses, Nav Lights, Nose Wheel Packing, Florescent Lamps, LED Lamps, Terminals, Relays, Wheel Caps & Hardware, P&W Filter Elements, P&W Hot Section Kits, Current Limiters, Lock Assys, ELT Batteries, 12-Volt Lamps, Static Wicks, Sleeves, Canon Plugs, Connectors, Back Shells, AC Blower Wheels, Expansion Valves, Good Selection of Air Conditioner Inv., Coax Connectors, Contact Pins, Wire, Etc.

NOTE: For a Complete Listing by Part Number and Description go to www.starmanauctions.com and click on Upcoming Auctions.

NEW HARDWARE

Large Selection of New Hardware with all the Paperwork Includes Clamps, Camlocks, AN Nuts, AN Bolts, AN Screws, AN Hyd Fittings Including Plugs, Unions, Adapters, Elbows, Reducers, T-Fittings, Nuts, AN Washers, Very Large Selection of Cherry & Cherry Max Rivets, Large Selection of Hi-Locks & Collars, Accu-Loc Rivets, MS Nuts, MS Roll Pins, MS Washers, Large Selection of MS Solid Rivets, MS Lock Nuts, MS Nut Plates, MS Hyd Fittings Including Unions, Elbows, Fittings, Caps, MS Turn Buckles & Turn Buckle Clips, Large Selection of Adel Clamps, MS Cotter Pins & Screws, Large Selection of NAS Solid Rivets, NAS Washers, NAS Bolts & Screws, Very Large Selection of O-Rings & Gaskets, Etc.

SHOP SUPPLIES

Large Selection of Oil & Fuel Sample Kits, Sanding Discs, Funnels, Brushes, Sand Paper, Safety Wire, Tie Wraps, Spot Check Penetrants & Developers, Scat Hose, Braided Flex Hose, Hi & Low Press Hose, SEM Kits, Paint Rollers, Spray Bottles, Stir Sticks, Large Selection of Masking & Misc Tape, Large Selection of Velcro, Plastic Bags, Consumable Fly Away Kits, Latex Gloves, Abrasive Disc, Dust Masks, Aluminum & Plastic Caps, Floor Mats, Seat Covers, Buffer Pads, Leather Cleaning Supplies, Static Pads, Absorbent Pads & Rolls, Etc.

LUBRICANTS, OIL, CHEMICALS, ETC.

Engine Compressor Wash Fluid, MEK, Isopropyl Alcohol, Solvents, 2380 Turbo Oil, 5606 Hyd Fluid, Aero Shell Grease, LPS 1,2 & 3, Glass Cleaner, Aero Shell 100 Oil, Various Paints, Epoxy Coatings, Zinc Primers, Hyd Oil, Turco 5884 Cleaner Solution, Grinding Compound, Adhesives, Resin, Soaps, Cleaners, Cleaning Supplies, Paper Towels, Etc.



CIRRUS II FLIGHT SIMULATOR

OFFICE FURNITURE

- (9) Executive Office Set-Ups. Cherry Wood Finish w/72" Executive Double Pedestal Desk & Matching Credenza, 2-Drawer Lateral File Cabinet & Bookshelves.
- 72" Executive Desk, Double Pedestal w/Matching Credenza Cherry Wood Finish
- 60" Double Pedestal Desk, Cherry Wood Finish
- (2) 72" Executive Double Pedestal Desks, Blonde Wood Finish
- 72" Executive Double Pedestal Desk w/Matching Credenza, Dark Oak Finish
- (4) Secretarial Desks, (2) w/R/H Returns, (2) w/L/H Returns, Blonde Wood Finish
- 6' Conference Table w/6 Black Roll-A-Round Chairs
- 8' Conference Table, Cherry Wood Finish w/6 Cherry Wood Upholstered Chairs
- 8' Conference Table w/6 Vinyl High Back Chairs
- (3) 48" Round Conference Tables, (2) Cherry Wood Finish, (1) Blonde Wood Finish, w/4 Chairs Each
- Misc Side Tables
- (6) Fire King 25 Fireproof File Cabinets, 4-Drawer
- (4) Schwab 5000 Fireproof File Cabinets, 4-Drawer Lateral & Regular File Cabinets
- (33) Leather High Back & Secretarial Chairs
- Misc Side Chairs
- (17) Overstuffed Leather Side Chairs
- (3) Sets of Overstuffed Leather Sofas and (2) Side Chairs Each
- (2) Metal High Top Patio Tables w/Tile Tops, (1) w/4 Chairs, (1) w/3 Chairs
- Whirlpool Side-by-Side Refrigerator/Freezer w/Ice & Water Door Dispensers
- (4) Microwave Ovens Including Whirlpool & Panasonic
- (10) Under Counter (Dorm Type) Refrigerators
- Manitowoc Commercial Ice Maker, 500 Lb
- Magic Chef Small Ice Maker
- Bakers & Chefs Outdoor Propane Grill, 8-Burner, 4-1/2' L x 2' W
- (3) Flat Screen TV's
- Several Paper Shredders
- Optima & Infocus Projectors
- Waste Baskets



Commercial Popcorn Making Machine
Several Other Pieces

OFFICE SUPPLIES

Large Selection of Toner Cartridges for Printers & Fax Machines, Several Brand Names, Large Selection of Copy Paper, Staplers, Tape Dispensers, Hole Punches, Paper Cutters, Paperclips, Staples, Binder Clips, Post-It Notes, Desk Organizers, Scotch Tape, Etc.

3-IN-1 OFFICE MACHINES & PRINTERS

- (4) Brother DCP-7065DN 3-in-1 Machines
- (6) Brother DCP-7020 & 7820N 3-in-1 Machines
- (2) Brother MFC-7360N 3-in-1 Machines
- (4) Brother HL-2270DN Printers
- (5) HP 1320 Laser Printers
- Brother MFC-8480DN 3-in-1 Printer
- HP2840 Color 3-in-1 Printer

- Dell 3110CN Color Laser Printer
- HP C8174A Color Printer
- HP CP1215 Color Laser Printer
- Dell B20C Laser Printer
- Dell Photo 964 Printer
- Various Other Printers

AUCTIONEER'S NOTE: *Avantair has filed Chapter 7 Bankruptcy and Starman Bros. Auctions, Inc. has been contracted by the Bankruptcy Attorney to liquidate all assets at Public Auction. This Auction will include a Very Large selection of Piaggio P-180 Inventory in New, O/H and As Removed Condition as well as a Good Selection of Ground Support Equipment, Shop Equipment, Test Sets, Office Equipment, Etc.*

Everything sells "AS IS, WHERE IS" with no warranties implied or expressed. Neither the auctioneer nor owners shall be liable for any incorrect description, fault, or defect. Everything positively sells to the highest bidder. Payment must be made in full day of sale. No property removed until settled for. Auctioneer is not responsible for accidents or stolen property. All counts are approximate. Announcements made day of sale takes precedence over all printed material.

COMPUTERS

- (100+) DELL DESKTOP COMPUTERS TO INCLUDE:
- (Approx 15) Dell Optiplex 360 Computers w/2.66 GHZ Processors, 2-3 GB of Ram, 80-250 GB Hard Drives
 - (Approx 20) Dell Optiplex 390 Computers w/3.1-3.6 GHZ Processors, 2-8 GB Ram, 160 GB - 1 TB Hard Drives
 - (Approx 35) Dell Optiplex 780 Computers w/3.1-3.6 GHZ Processors, 2-4 GB Ram, 160-500GB Hard Drives
 - (Approx 10) Dell Optiplex 380 Computers w/2.6-3.6 GHZ Processors, 2-5 GB Ram, 80-160 GB Hard Drives
 - (Approx 5) Dell Optiplex 620 Computers w/2-3.8 GHZ Processors, 2-4 GB Ram, 160-250 GB Hard Drives
 - (Approx 4) Dell Optiplex 745 Computers w/3-3.4 GHZ Processors, 2.4 GB Ram, 80-500 GB Hard Drives

NOTE: Most all desktop computers have dual flat screen monitors ranging from 19" to 24".
Various Optiplex & Latitude Laptop Computers
Several Additional Flat Screen Monitors, Keyboards, Cables, Etc.
Dell Servers Includes Dell Power Edge R-610's, R-170, 2950's, 1950's, and R-720's

COMMERCIAL PRINTING EQUIPMENT & COPIERS

- Oce Vario Print 2090 Mid Volume High Speed Digital Black & White Copier, Printer, Scanner
- Challenge Mdl 3922 Style MS Paper Hole Punch
- Challenge Mdl HBE 18" Paper Cutter
- Minolta C-452 Biz Hub Color Copier
- (3) Kyocera Taskalfa 250CT Color Copiers
- Kyocera 420I Color Copier
- Kyocera KM-2550 Copier
- Kyocera KM-3035 Copier
- Minolta Biz Hub C-250 Color Copier
- Copystar CS-1650 Copier



AVANTAIR & MISC MEMORABILIA

Avantair Hats, Visors, Jackets, Ties, Polo & T-Shirts, Purses & Hand Bags, Etc.
Various Tampa Bay Rays & Buccaneers Memorabilia, Some are Signed

SHELVING & MISC

Large Selection of Metal Shelving 3' W w/18" Shelves
Misc Wood & Rubbermaid Shelves
Misc Snap Together Racks
2-Wheels, Parts Carts, Etc.

PAYMENT TERMS: Cash, Certified Funds, or Company Check ONLY if accompanied by Bank Letter of Guarantee!! NO EXCEPTIONS! Wire Transfers will be accepted with a 20% non-refundable deposit day of sale in one of the forms listed above. A 5% Buyer's Premium applies to ALL purchases. We also accept MasterCard and Visa with an additional 3% Buyers Premium applicable.

PROXY BIDS: If you are unable to attend this auction we will bid on your behalf. For more info visit our web site at www.starmanauctions.com and click on Upcoming Auctions and scroll down to the Proxy Bid Section. Complete form and fax to (402) 592-2327 or call Steve at (402) 681-6456.

LOADING & REMOVAL: Once an item is sold the winning bidder is responsible for its removal. Any cost responsibility and risk of removal of purchases remain with the buyer. Removal may begin after payment in full and must be completed by the posted deadlines. NO EXCEPTIONS OR EXTENSIONS! There may be various trucking companies on site to arrange for transportation. However, it will be the buyer's responsibility to arrange their own trucking.

A 5% BUYER'S PREMIUM WILL APPLY TO ALL PURCHASES AT THIS AUCTION.

STARARMAN BROS. AUCTIONS INC.

1240 Royal Drive ~ Papillion, NE 68046 ~ 4901 E Falcon Drive ~ Mesa, AZ 85215
(402) 592-1933 ~ (480) 396-0380