

**4
DAYS!**

AVIATION AUCTION

**4
DAYS!**

Very Large Salvage Yard Liquidation! • 4-DAY ABSOLUTE AUCTION!!

September 16, 17, 18 & 19, 2010
Starting at 9:00 A.M. All Four Days!

CENTRAL AIR PARTS, INC.
3185 Willhoit Airport Road
STAUNTON, ILLINOIS



**SALE SITE PHONE
(618) 635-3252**

**ABSOLUTE
AUCTION!**

PRSR FIRST CLASS
U.S. POSTAGE
PAID
MAIL U.S.A.

First Class

SALE ORDER

THURSDAY~September 16th: Landing Gear, Wheel & Brake Inv., Exhaust, Fuselages, Wings, Doors, Engine Mounts, Control Surfaces.

FRIDAY~September 17th: Finish Control Surfaces, Tanks, Cowling, Wing Tips, Wheel Pants, Spinners, Seats, Cessna, Piper & Beech Airframe Inv., Electrical, Misc.

SATURDAY~September 18th: Finish Electrical, Propellers, Accessories, Crankcases, Crank & Camshafts, Accy. Cases & Sumps, Engines, Engine Inv., Vehicles, Project Aircraft Sells at 1:00 P.M. Saturday.

SUNDAY~September 19th: Finish Engine Inv., Avionics, Instruments.

DIRECTIONS: From I-55 take Exit 41, Go West on Staunton Rd./Main St. Approx. 2.5 Miles through town to Hilbard St./Hwy. 4, Turn Right go 1.25 Miles to Staunton Bunker Hill Rd. (Across from Cemetery), Turn Left go 2 Miles to Willhoit Airport Rd., Turn Right go 1 Mile to Sale Site. Watch for Auction Signs!

AIRLINE CONNECTIONS

Most Major Airlines into St. Louis Lambert Field, Rental Cars Available there. Private Aircraft Can Land at Litchfield Municipal Airport. The Identifier is 3LF. Local FBO is Central Air Services. Rental Cars are Available in Litchfield by Calling Enterprise Car Rental (217) 324-2326. Another Option for Private Aircraft is St. Louis Regional Airport at Bathalto, IL. The Identifier is ALN. This Airport has a tower and is set up for ILS approaches. Rental Cars are Available there through Enterprise Rental Car by calling one of the FBOs.

HOTELS

NOTE: LIMITED HOTELS, SO MAKE YOUR RESERVATIONS NOW!

- | | |
|---|--|
| Holiday Inn Express
1405 W Hudson Dr ~ Litchfield, IL
(217) 324-4556 | Super 8 Motel
211 Ohren Lane ~ Litchfield, IL
(217) 324-7788 |
| Quality Inn & Suites
1010 E Columbia Blvd North ~ Litchfield, IL
(217) 324-9260 | Hampton Inn
11 Thunderbird Cir ~ Litchfield, IL
(217) 324-4441 |
| Super 8 Motel
1527 Herman Road ~ Staunton, IL
(618) 635-5353 | Americas Best Value Inn
224 N Ohren Lane ~ Litchfield, IL
(217) 324-2181 |

**STARMAN BROS.
AUCTIONS INC.**

1240 Royal Drive • Papillion, NE 68046
(402) 592-1933

www.starmanauctions.com

Return Service Requested

**STARMAN BROS.
AUCTIONS INC.**
1240 Royal Drive • Papillion, NE 68046
(402) 592-1933 • FAX (402) 592-2327
www.starmanauctions.com

**STARMAN BROS.
AIRLINE SERVICES, INC.**

Check Out Our Web Site...
www.starmanauctions.com

★ ★ ★ PROJECT AIRCRAFT ★ ★ ★



1980 Cessna 152 Project, N-4932M S/N 15284494, Approx. 8,812 Hrs. A.F.T.T., Lycoming O-235 L2C Engine w/Approx. 3,000 Hrs. S.M.O.H. Avionics: RT-385A Nav Com, RT-359A Transponder, Missing Some Instruments. Aircraft was bank repossession and has no major damage.



1980 C-172 R/G Project Aircraft, N-4726V, S/N 172RG-0370, 9,768 Hrs. T.T., No Nose Gear, Some Nose Gear Area & Nose Gear Door Damage, Some Wing Damage, Top of Rudder & Vertical Minor Damage. All Logs, No Avionics, Prop, or Engine



1941 Piper J-4E Project Aircraft, N-21CR, S/N 4-1517, No Engine, 1,407 Hrs. T.T., New Lift Struts, Complete Needs Assembled

1962 Piper PA25-235 Pawnee Project, S/N 25-2090, 4,010 Hrs. A.F.T.T., Lycoming O-540-B2B5 Engine w/4,000 Hrs. S.M.O.H. Aircraft is missing first airframe log, has Restricted Airworthiness Certificate. Engine will sell separate of airframe.

1946 Ercoupe Model 415C Project, N-87055, S/N 228, 4,000 Hrs. A.F.T.T., Project includes Ailerons, Tail Surfaces, Cowling and Fuselage is on Gear. No Wings or Prop. Has Logs, Airworthiness and last annual was 2006.

NOTE: Plan on Four Long Days of Selling! There is a Large Amount of Inventory. We May Also Run Two Selling Rings at the Same Time on Occasion Throughout the Four Days So Bring Help and Be Prepared.

★ VEHICLES ★



2006 Chevrolet 3500 Crew Cab Dually Pickup, 6.6 Duramax Turbo Diesel, Allison 6-Speed Auto. Trans., Cruise Control, A/C, AM/FM Stereo, Power Windows & Seat. Bed Mounted 10,000 Lb. Winch & Gin Poles. Camper Shell Sells Separate.

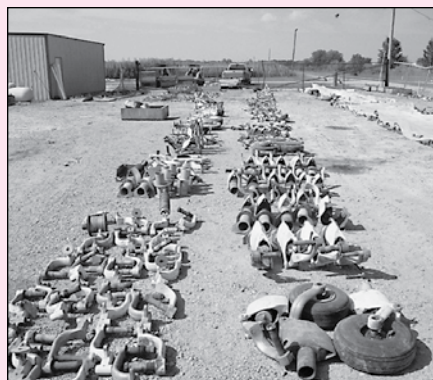


International Loadstar 1800, 1,000 Gal. Jet A Fuel Truck, 6-Cyl. Gas Engine, Manual Transmission, Dual Reels, Over Wing Nozzle, Velcon Filter System, Top and Bottom Load.

★ ★ ★ LANDING GEAR ★ ★ ★

Note: There is a **LARGE** Amount of Landing Gear & Landing Gear Inventory Here! The Following is only a sample.

C-210 Nose Gear Assys. & Parts
C-206 & 210 Nose Gear Trunnions
C-210 Power Pak
Cardinal Nose Gear Assy.
C-337 Nose Gear Inv.
C-172 Nose Gear Assys.
C-150 Nose Gear Assys.
C-310 Nose & Main Gear Assys.
'67 C-310 Nose Gear Assy.
Large Selection of C-150/172 Nose Gear Assys.
C-300/400 Series MLG
C-210 MLG Actuator Gear Box Assy.
Cessna L/G Boxes w/Motors
(3) Cessna R/G Up-Lock Cylinders
Cessna R/G Pivot Assys.
Cessna R/G Sequence Valves
Several Cardinal Nose Gear Barrels
Cessna RG Scissors & Inv.
Several Cessna Firewall Fittings
Cessna R/G Upper Trunnions & Pivots
Very Large Selection of Cessna Tube Gear & Spring Gear
Late Style Bonanza Nose Gear Upper Trunnions
Early & Late Model Beech Bonanza Main L/G Assys.
Beech Early & Late Model Drag Braces
Bonanza Lower Gear Legs
Several Beech L/G Boxes w/Motors
Baron Nose Gear Assys.
Sundowner & Musketeer L/G Trunnions
Skipper L/G Inv.
Several Beech Retract Rods
King & Queen Air Shimmy Dampers
Large Selection of Piper & Beech MLG
Cherokee 140, 180, Arrow, PA-23, Comanche, Main Gear Assys., Main Upper Trunnions, Lower Barrels & Axles
Several Piper Retract MLG Assys.



Piper & Cessna Nose Gear Forks
Comanche Upper L/G Trunnions
Comanche L/G Scissors
Several Piper Nose Gear Assys.
Piper & Cessna Shimmy Dampers, Large Selection
Large Selection of Cessna & Piper L/G Scissors
Several Cherokee MLG Upper Trunnions
Piper & Cessna Drag Links
PA-22 L/G Inv.
New Rockwell 112 Nose Gear Assy.
Rockwell MLG Assys.
(2) Navion Main L/G Assys.
Navion Nose Gear Assy.
Bellanca Viking L/G Leg
Mooney L/G Inv.
Cessna Steering Collars
(12) Scott Tail Wheels
New Scott Tail Wheel Mounts, Axles, Steering Collars
Power Paks
L/G Bushings
Very Large Selection of Cessna, Piper & Beech Actuators, Links, Scissors, Retract Rods, Trunnions, Barrels, Etc.

★ ★ ★ FUSELAGES ★ ★ ★



Cessna Turbo 210G Fuselage
C-210 Fuselage
C-210L Fuselage
1960 C-210 Fuselage
C-205 Fuselage
C-182 Early Model Fuselage
C-188 Cabin Section w/Hopper & Main Gear



C-188 Ag Truck Fuselage
C-182N Fuselage



(3) C-172N Fuselages on Main Gear
(2) C-172 Fuselages on Main Gear
C-172A Fuselage on Gear
(16) C-172 Fuselages, Models Include P, N, M, B, G, Etc.
(2) C-177 Fuselages
C-172 Straight Tail Fuselage
C-175 Fuselage
(8) C-152 Fuselages
(4) C-150 Fuselages

Piper PA31P Fuselage
PA28-140 Fuselage
Piper PA28-180 Fuselage
PA34-200 Fuselage
PA34-200 Fuselage
(2) Piper PA-28-151 Fuselages
Piper PA-28-235 Fuselage
(5) PA-28-140 Fuselages
PA-34-200 Fuselage
PA-24 Comanche Fuselage
Piper PA-28-161 Fuselage
Piper PA-28-181 Fuselage
(2) PA28-151 Warrior Fuselages
Piper PA22-150 Fuselage



Piper Cherokee Archer Fuselage
Piper Warrior II Fuselage
(2) Pawnee PA-25-150 Fuselages
(3) Beech C-23 Fuselages
Aztec Fuselage
Piper PA-24-250 Fuselage
Beech Sport Fuselage
Bonanza Fuselage
Beech Sierra 200 Fuselage
(2) C-150G Fuselage
C-150F Fuselage
(2) Skipper Fuselages
Beech Musketeer Fuselage
Bellanca Viking Fuselage
(2) Grumman Ag Cat G-164A Fuselages
Rockwell 112 Fuselage

★ WHEEL & BRAKE INVENTORY ★

Large Selection of Wheel Assys. & Wheel Halves to Include 5", 6", 8", 10", Cleveland, Goodyear, & Goodrich
100's of Master Cylinders
100's of Calipers
New Brake Discs
Cleveland Brake Pads, Pucks & O-Rings
100's of Brake Discs
Brake Linings & Pucks
Axles
Torque Plates
Bearings



★ ★ ★ WINGS ★ ★ ★



(2) C-210 Wings
(2) 60 Model 210 Wings
(7) C-177 Cardinal R/H & L/H Wings
C-182 R/H Long Range Wing
(2) 59/60 Model C-182 Wings
(12) C-182 Wings
(3) C-182 L/H Long Range Wings
'59 C-182 R/H Wing
(5) C-172 Long Range Wings
(21) C-172 R/H & L/H Wings
(8) C-188 Wings
(2) Cessna 175 Wings
(28) C-150/152 Wings
C-152 L/H Wing, Rebuilt
(2) C-152 Long Range Wings
C-140 Metalized L/H & R/H Wings
(14) Cherokee 140 R/H Wings
(5) Piper Cherokee & Warrior Wings
(3) Tomahawk Wings

Warrior 151 R/H Wing
(2) Navajo Wings w/Gear Assy.
(20+) Piper Hershey Bar Wings
(20+) Piper Taper Wings
(7) Comanche Wings
(6) Piper Apache & Aztec Wings w/L/G Assys.
(2) PA-22 Wings
(5) Bonanza Wings
(PR) E-55 Baron Wings
(4) Beech Skipper Wings
(14) Sundowner/Musketeer Wings
(PR) Beech Sierra Wings
Baron Wings
(PR) Fabric Luscombe Wings
(2) Grumman Yankee Wings
(3) Piper Pawnee Wings
(4) Decathlon Wings
(2) C-150 Long Range Wings

★ ★ CABIN & GEAR DOORS ★ ★



(270) Cessna Cabin Doors to Include C-150/152, 172, 210, 182, 177, Jump Door
(49) Beech & Piper Cabin Doors, PA-22, Sundowner, PA-32R, PA-28, Beech 23, & PA-38, PA-23, Bonanza, Baron, Etc.
Beech, Piper & Cessna Cabin & Baggage Doors
Several Cessna, Piper & Beech Nose & Main Gear Doors, All Makes & Models
Queen Air Nose Gear Doors, Beech Bonanza & Baron Inboard & Outboard Gear Doors

★ ★ ★ COWLING ★ ★ ★

Note: There is a **VERY** Large Selection of Cowling Including:

C-188 Top & Bottom Cowls
C-182 Bottom Cowls
Early C-182 Bottom Cowls
C-182 Top Cowls
Several C-172 Top & Bottom Cowls
C-150 Top & Bottom Cowls
C-182 Nose Bowls
'56 C-172 Cowl Assy.
C-152 Cowls
C-210 Nose Bowls & Side Panels
C-300 & C-400 Series Nose Bowls
C-300 Series Tops & Sides
400 Series Top Cowls
Cherokee 140 & 180 Top & Bottom Cowls
PA32-300 Top Cowls
Cherokee Arrow Top Cowls

PA30 Nose Bowls
PA28-235 Top Cowls
Tomahawk Bottom Cowls
Warrior Top Cowls
PA28 Top Cowls
PA23 Cowlings
55 Baron Top Cowl
Tri Pacer Bottom Cowl
Several Sierra & Sundowner Top & Bottom Cowls
Beech Skipper Top Cowls
Mooney Top & Bottom Cowls
Grumman Yankee Canopy
Travel Air Bottom Cowls
M20K Mooney Top & Bottom Cowls

★ ★ ★ CONTROL SURFACES ★ ★ ★



Note: There is a **Very Large Amount** of Control Surfaces At This Auction. The Majority Will Have No or Little Damage To Them.

(185) Horizontal Stabilizers: C-150/152, C-172, C-177, C-180, C-188, C-175, C-182, C-185, C-210; (7) C-310, C-421, Piper PA-32, Cherokee, Arrow, Seneca, Comanche, Tomahawk, Aztec, Baron, Bonanza, B-36, Skipper, Musketeer, Sundowner
(285) Elevators: C-140, C-150/152, C-172, C-182, C-188, C-180, C-310, C-210. All Makes of Piper, Musketeer, Bonanza, B-36TC, F-33, Etc.
(350) Flaps: C-150/152, C-172, C-177, C-182, C-210, C-140, C-300 & 400 Series, Piper, Cherokee, Arrow, Seneca, PA-24, PA-23, Sierra, Sundowner, Bonanza, Baron, Some Queen Air & King Air
(300) Ailerons: C-140, C-150/152, C-172, C-177, C-182, C-188, C-210, C-310, Cherokee, Arrow, PA-24, PA-34, PA-32, PA-23, Skipper, Sundowner, Bonanza, Baron

(200) Rudders: C-150/152, C-172, C-140, C-182, C-188, C-210, C-310, Cherokee, PA-32, PA-23, PA-30, PA-38, PA-24, Sundowner, Skipper, Baron, Bonanza
(100) Cessna Vertical Fins: C-150/152, Straight Tail 150 & 172, C-172, C-182, C-177, C-188, C-182, C-210, C-310, C-411
(95) Piper Vertical Fins: Tomahawk, Cherokee, PA-28-151, PA-28R-200, PA-28-180, PA-32, PA-23, PA-34-200, Aztec, PA-24-250
(35) Beech Vertical Stabilizers: Skipper, Sundowner, Baron
Large Selection of Fabric Surfaces Including PA-22, J-3, Decathlon, Citabria
Good Selection of C-337 Surfaces & Tail Booms
Rockwell 012 Control Surfaces
Mooney Control Surfaces
C-170 Control Surfaces



★ ★ ★ FUEL TANKS ★ ★ ★

(90) C-150/152 Fuel Tanks
C-150 Long Range Tank
(6) C-152 Long Range Fuel Tanks
(53) C-172 Fuel Tanks
(18) C-172 Long Range Tanks
(6) C-337 Fuel Tanks
(14) Cessna 300/400 Series Tip Tanks
(3) C-170 Fuel Tanks
(38) Piper Wing Tanks, Large & Small

Luscombe 8A Fuel Tanks
(3) Citabria Fuel Tanks
Bonanza Tip Tank
Beech Rear Auxiliary Tank
Large Selection of C-150 thru C-172 Fuel Tank Covers
Several Fuel Cells



★ SPINNERS & BACKING PLATES ★

(250+) Spinners to Include Skipper, PA32, C-150/152, C-172, Baron, C-210, C-310, PA34, C-182, Sundowner, C-188, PA28, Mooney, Apache, Bonanza, Aztec, PA38, C-172 (180 HP), Navajo, & Bellanca
100's of Spinner Backing Plates

★ WING TIPS & WHEEL PANTS ★

(156) Cessna, Piper & Beech Wheel Pants
Several 100 Wing Tips to Include Cessna, Beech, & Piper Droop Tips

★ ★ ★ SEATS & INTERIOR ★ ★ ★

Several 100 Cessna, Piper & Beech Seats to Include Front & Rear Seats, Cessna Child Seats, & Piper Center Seats, Articulating Seats, Beech Baron & Bonanza Seats, Warrior Seats, Etc.

★ AIR BOXES & COWL FLAPS ★

C-180/182 Air Boxes, All Other Makes & Models of Cessna, Piper, Beech, & Mooney Air Boxes
Very Large Selection of Cowl Flaps

★ CESSNA & PIPER INVENTORY ★

New Cessna & Piper Airframe Inv. to Include Bearings, Bushings, Strut Steps, Control Surface Caps, Strut Cuffs, Carb Air Filters, Seat Track, Lines, Placards, Beacon Mounts, Door Hinges, Lighting & Electrical, Switches, Relays, Brackets, Battery Box Trays, Exhaust, Spinners & Backing Plates, Shimmy Dampers, Wheel Pant Backing Plates, Plastic Interior, Gear Door Hinges, Air Box, Bracket Air Filters, Oil Filters, Etc.
As Removed Cessna Inv. to Include Very Large Selection of Shimmy Dampers, Control Surface Pulleys, Pressure Switches, Large Selection of Cessna 300/400 Series Flap Motors & Transmissions, Very Large Selection of Flap Drive Motors & Assys., Wing Ribs, Steps, 400 Series L/G Links, RG L/G Actuators, L/G Switches, OAT, Seat Rail, 100's of Control Yokes, (2) Power Paks, Large Selection of Cowl Flaps, Oil Caps, Flap Handles, Strut Fairings, Nose Bowls, Control Cables, Landing Lenses, Large Selection of Cessna L/N/G Collars, C-172 RG Nose Gear Trunnions, Good Selection of C-177 RG L/G Inv., Trim Wheels, APU Plugs, Control Surface Actuators, Several Cessna Gear Door Actuators, Trim Actuators, Cessna Steering Rods, Bell Cranks, Gear Door Hinges, Gaskolator Assys., L/G Saddles, Several 100 Pitot Tubes, Fairings, Wing Vents, Supports, Rudder Horns, Landing Light Brackets, Control Surface Weights, Interior Plastic, Tip Tank Lenses, Fuel Tank Inv., Control Cables, C-310 Flap Gear Box, Etc.
Rudder Pedals & Assys., Fuel Caps & Fittings, Venturis, Air Boxes, Door Handles & Latches, Landing Lights, Ash Trays & Arm Rests, Bell Cranks, Inspection Covers, Retract Rods, Glove Boxes, Battery Boxes, 300 Series Gear Boxes, 300 & 400 Series Torque Tubes, Flap Tracks, Large Amount of Fairings, Cabin Vents, 100's of Lift Strut Steps, C-172 RG Actuator Fittings, Oil Separators, Push/Pull Rods, Fuel Selector Valves, & Vac Filters
Piper Inv. to Include Steps, Battery Boxes, Control Surface Counter Weights, L/G Actuators, Power Paks, Wing Tips, Control Surface Tips, Rudder Pedals & Assys., Fabric Wing Ribs, Fuel Selector Valves, Brake Reservoirs, Door Latches, Cherokee Shimmy Dampers, Push/Pull Rods, Tie Down Rings, Trim Tab Wheels, Throttle Cables, L/G Scissors & Links, Pitot Tubes, Nose Gear Steering Horns, Flap Control Actuators, Gear Doors, Glove Boxes, Flap Handles, & Baffling
Very Large Selection of Cessna, Piper & Beech Plastic to Include Instrument Panels, Control Surface Tips, Strut Cuffs, Stabilizer Tips, Sun Visors, Door Panels, Tail Cones & Stingers

★ ★ ELECTRICAL INVENTORY ★ ★

Very Good Selection of Miniature Bulbs, Sealed Beams, Nav. Lights & Lenses, Starter Solenoids, Ignition Switches, Starter Vibrators, Voltage Regulators, Rotating Beacons, Power supplies, Nav. Light Power Supplies, APU Plugs, Grimes Bulbs, Strobe Power Supplies, Rheostats, Rocker Switches, Circuit Breakers, Toggle Switches, Cigarette Lighters, Single & Double Click Switches (big & small), Post Lights, Warning Lights, Flashers, Nav. Light Assys., Rocker & Circuit Breaker Panels.
Stall Warning Horns
Several Lift Detectors

Can't attend the auction? Bid using our Proxy Bid program. See information on back page.

★ ★ BEECHCRAFT INVENTORY ★ ★

New King Air Gear Door Shaft, Several Single Throw Beech Yokes, Steps, Beech Control Yokes, Beech Flap Actuator Assys., Beech Trim Actuators, Elevator Horns, Beech Rudder Pedals, Beech Dual Yoke, Beech Inv. to Include Gear Doors, Control Yokes, Flap Actuators, Steps, L/G Retract Rods, L/G Braces, Control Surface Actuators, L/G Motors, & Steering Rods, Etc.

★ MUFFLERS & EXHAUST ★



Very Large Selection of Exhaust Systems & Inv. for Piper, Cessna & Beech. Includes Mufflers, Tail Pipes, Risers, Shrouds, Both Single & Twin Engine, Several 100 Pieces. TSIO-520WB Turbo Charger Y's

★ ★ ENGINE MOUNTS ★ ★



(150) Cessna, Piper & Beech Engine Mounts. All Makes & Models, Most All Have No Damage.
Piper Warrior Engine Mounts (O/H)
Beech Sierra Engine Mount (O/H)
(2) Pitts Engine Mount
PA-11 Engine Mount

★ ★ ★ MISCELLANEOUS ★ ★ ★

(450+) Lift Struts Include C-150/152, C-172, C-182, C-188, C-175, C-210, & Misc. Piper Metal 180/182 Tail Cones. Several Other Cessna, Piper & Beech Tail Cones
(50) Pitot Tubes
Several Primers
Fuel Caps
Large Selection of Seatbelts
Ag Spreaders

1000's of A/R Lord Mounts
Lockheed Electra Inv. to Include MLG, Tail Gear Assy. & Misc. Airframe
(8) Luscombe Rudders & Elevators
(2) Luscombe Fuel Tanks
Luscombe Tail Cone
Luscombe Engine Mount
Luscombe Lower Cowl
Various Luscombe Skins & Braces

★ ★ ★ ACCESSORIES ★ ★ ★



(40) MA-3A & MA-3SPA Carburetors
(26) MA-4SPA Carburetors
(22) MA4-5 Carburetors
(6) HA-6 Carburetors
(5) NAS-3 Carburetors
Carburetor Inv. to Include Bowls, Tops, Floats, Venturis, Kits & Misc.
(14) RSA10 & RSA5 Fuel Injection Servos
Good Selection of RSA5 & 10 Servos (Damaged)
(27) Throttle Bodies
(35) Cont. Fuel Injection Pumps
(8) Cont. Injectors
(33) Flow Dividers
(4) 985 & 1340 Carburetors
Misc. Pressure Carbs
(210) Magneto Cores: 4 & 6 Cyl. Bendix & Slick
New Slick & Bendix Inv.

Mag Harnesses
(100) Starters: 12 & 24 Volt Prestolite, Delco, Continental
(4) Type 36E14 & 756 Starters
(69) Alternator Cores: Very Good Selection Including 50 Amp
Large Amount of 100 AMP Alternator Drive Gears
(50) Generators: Delco, Prestolite, Etc., Various Amps
(80) Fuel Pumps: Weldon, Dukes & Misc.
Very Large Selection of Mechanical Fuel Pumps
(35) Right Angle Starter Drives
(40+) Cont. 470/520 Oil Pumps & Housings
Very Large Selection of Continental Oil Pump Assys. & Housings
(42) Wet/Dry Vac. Pumps
(125) Prop Governor Cores: Woodward, Hartzell, & Hamilton Standard
(20) Cessna, Piper, Strato Power, Vickers Hyd Pumps
(160) Oil & Inner Coolers
Oil Cooler Backing Plates
(5) Turbo Chargers: Ray Jay & Garrett
(6) Turbo Poppet Valves
(12) Turbo Controllers
(7) Turbo Waste Gates
(30) Tach Generators
Lg. Selection of Cessna, Beech & Piper Fuel Sending Units
Several Southwind & Janitrol Heaters

★ ★ ACCY. CASES, ★ ★ SUMPS & PANS

- (120) Lycoming Accy. Cases
- (68) Continental Accy. Cases
- (50) Continental Oil Pans & Sumps
- (30) Continental O-300 & -360 Sumps
- (70) Lycoming Sumps to include 235, 290, 320, 360 & 540
- (16) Kidney Sumps: A-65 thru O-200



★ ★ CRANKCASES ★ ★



- Cont. O-520 Heavy Case (YT)
- Cont. IO-470 Crankcase (YT)
- Cont. O-300 Crankcase (YT)
- Cont. A75 Crankcase (YT)
- Cont. C-85 Crankcase (YT)
- (2) Lyc. IO-360 Crankcases (YT)
- (2) Lyc. O-540 Crankcase Cores
- (14) Lyc. 320 & 360 Crankcase Cores
- (18) Lyc. O-235-L2C Crankcase Cores
- (7) Lyc. O-320-H2AD Crankcase Cores
- (2) Cont. IO-346 Crankcases
- (16) Cont. O-470, O-520 Crankcase Cores
- Cont. IO-470L Crankcase Core
- (30) Cont. O-300 Crankcase Cores
- (3) Cont. GO-300 Crankcases Cores
- (20) Cont. O-200 Crankcase Cores
- (3) Cont. E-185 Crankcase Cores
- (22) Cont. 65/85 Cases

CRANK & CAMSHAFTS

- Lyc. O-360 A4K Crankshaft (YT)
- Lyc. IGSO-540 Crankshaft (YT)
- Lyc. TIO-541-E1C4 Crankshaft (YT)
- Lyc. O-320-A2B Crankshaft (O/H)
- Cont. IO-520D M10 Crankshaft (YT)
- Cont. IO-470D M10 Crankshaft (YT)
- (2) Cont. IO-470L Crankshaft (YT)
- (2) Cont. IO-470 Crankshafts (YT)
- Cont. TSIO-520 Crankshaft (YT)
- Cont. IO-520CB Crankshaft M-10 (YT)
- Cont. O-470-L Crankshaft (YT)
- Cont. C-85 Crankshaft (YT)
- Cont. A65 Crankshaft Mdl A651085, .020 (YT)
- Cont. A65 Crankshaft M20 (YT)
- (2) Lyc. IO-540 Crankshaft Cores
- Lyc. O-290 Crankshaft (Rep) • Cont. O-470R Crankshaft Core
- Cont. O-470-VO Crankshaft • Cont. IO-470J Crankshaft
- Cont. O-470-11 Crankshaft • Cont. GO-300 Crankshaft
- Cont. E-185 Crankshaft
- (35) Crankshaft Cores to Include Lyc. 029, 235, 540 & Cont. C-145 to 520
- (125) Camshafts to Include Cont. 65/85, 200 thru 520, and Lyc. O-290 thru O-720

★ PROPELLERS & ★ INVENTORY



- McCauley CTM-75-53 Fixed Pitch Prop (O/H) (C-172)
- (2) McCauley FFA7563 Fixed Pitch Prop (O/H)
- Hartzell HCC2YK-1BF Constant Speed Prop (O/H)
- Hartzell C-310 Props Colemill Conversion Prop
- C-172 RG 3-Blade Conversion Prop, Damaged
- Hartzell HG-82XL-2C Constant Speed Prop
- (2) McCauley C2A34C204 Constant Speed Props
- McCauley E2A34C73 Constant Speed Prop
- (2) Hartzell HCA2VF2115 Constant Speed Props
- McCauley 2A34C66 Constant Speed Prop
- McCauley C161009-0101 Constant Speed Prop
- McCauley 2A36C18 Constant Speed Prop
- McCauley D2AF34C-65 Constant Speed Prop
- McCauley MFC-8470 Fixed Pitch Prop
- McCauley 2AF36C39 Constant Speed Prop, Damaged
- McCauley 2A34C-201 Constant Speed Prop
- McCauley D2A34C58 Constant Speed Prop
- McCauley 2A36C23 Constant Speed Prop
- Hartzell BHCA2VF Constant Speed Prop
- (2) Hartzell HC82VL Constant Speed Props
- Hartzell HC92ZK Constant Speed Prop
- Hartzell HC-A2XK-2 Constant Speed Prop
- Hartzell HC-12X20-8D Constant Speed Prop
- Hartzell 92ZF Constant Speed Prop
- Hartzell HC-82XF-2B Constant Speed Prop
- Hartzell HC-82XK-1D Constant Speed Prop
- Hartzell HC-82XG-2B Constant Speed Prop
- Hartzell HC-82M-2C Constant Speed Prop
- (2) Hartzell HC-92ZK-2B Constant Speed Props
- Hartzell HC-A2VK-2 Constant Speed Prop
- Hartzell HC-R2035-M Constant Speed Prop
- Hartzell HC-A2X5-2B Constant Speed Prop
- McCauley FC8465 Fixed Pitch Prop (C-175)
- McCauley MTM7656 Fixed Pitch Prop
- McCauley MEC6367 Fixed Pitch Prop
- McCauley TCMCS58 Fixed Pitch Prop
- McCauley CM6869 Fixed Pitch Prop
- McCauley EM7461 Fixed Pitch Prop
- McCauley CTM7553 Fixed Pitch Prop
- McCauley FC8367 Fixed Pitch Prop
- McCauley FM9047 Fixed Pitch Prop
- McCauley MDM7353 Fixed Pitch Prop
- McCauley DTM-7553 Fixed Pitch Prop
- Sensenich 76EM8S5 Fixed Pitch Prop
- Sensenich M74DM Fixed Pitch Prop
- Sensenich 74DC60 Fixed Pitch Prop
- Sensenich M76EMMS-0-60 Fixed Pitch Prop
- Sensenich 76EM8S5-0-60 Fixed Pitch Prop
- Hamilton Standard R-985 Prop
- (2) Hamilton Standard Radial Engine Props
- Hartzell HC-J3YF-2UF 3-Bladed Prop, Damaged
- Several Damaged Fixed Pitch & Constant Speed Props
- Large Selection of Prop Spacers, Several 2 & 3 Blade
- McCauley & Hartzell Hubs, Large Selection of Hartzell & McCauley Blades, Hamilton Standard Blades

★ ★ ★ ENGINES ★ ★ ★

- Lyc. O-360-F1A6 Engine Core, Most All Accys., 1,100 Hrs. S.M.O.H.
- Lyc. O-320-E3D Engine, w/Accys., w/Ram 160 HP, STC 500 Hrs. S.M.O.H.
- Lyc. O-235-C1 Engine Core
- Lyc. O-320-E2D Disassembled Engine
- Lyc. O-320-H2AD Disassembled Engine
- Lycoming O-145-B2 Disassembled Engine
- Cont. IO-470-10 Engine w/Accys.
- Cont. O-470 Engine Core, Some Accys.
- Cont. O-470-RCL Disassembled Engine
- Cont. E-185 Engine Core, No Accys.
- Cont. O-300-D Engine Core
- Cont. C-85-12 Engine Core, Most All Accys.
- Cont. A-65-8 Engine, Has Carb & Kidney Sump
- Cont. A-65-8 Engine Core, Some Accys.
- Cont. GO-300 Engine Core
- Cont. O-200 Disassembled Engine
- Cont. 4 Cyl GPU Engine

★ CONTINENTAL & ★ LYCOMING INVENTORY

- (42) Starter Ring Gears
- New Cont. & Lyc. Engine Inventory to Include Gears, Bearings, Lord Mounts, Pistons, Piston Rings, Accy Mounts, Gaskets, Oil Pump Gears, Crush Gaskets, Seals, Valves, Push Rods, Push Rod Housings, Valve Guides, Primer Lines, Cyl Gasket Sets, Dipstick Housings, Engine Gasket Sets, Oil Pump Shafts, Hardware, Valve Springs, Etc.
- Used Engine Inv. Includes Cont. & Lyc. Lifters, Cyl Base Nuts, Valves, Dual Accy Mount Pads, Counter Weights, Oil Pump Gears, Intake, Piston Pins & Plugs, Magneto Adapters, Oil Pump Housings, Accy Drive Housings & Gears, Lyc. Oil Distributor Blocks, Tach Drive Gears, Rocker Box Covers, Vermatherms, Thru Bolts, Bearings, Cont. Fuel Pump Shields, Push Rod Flanges, Crossover Tubes, Tach Drives, Cont. 65/85 thru 520 Intakes, Mag Drives, Bearing Collars, Right Angle Starter Drive Inv., Cont. Engine Mount Legs, Injector Nozzles, Cont. Oil Pump Housings, Oil Filter Adapters, Oil Pickup Tubes, O-300 Intake, Etc.
- Push Rods, Rocker Arms, Rocker Arm Shafts, Connecting Rods, Gears, 540 Carb Mounts, Valve Springs, Lyc. 540 Engine Legs, Mag Drive Gears, Connecting Rods, Vermatherm Housings, Pistons, Tappet Bodies, Accy Drive Housings & Gears, Dipsticks, Lifters, Etc. Very Large Selection of As Removed Engine Inv.
- Large Selection of Cont. 65/85 Engine Inv. to Include Accy Cases, Rocker Box Covers, Bushings, Brackets, Rocker Arms, Valves, Gears, Piston Pins, Pistons, Shafts, Intakes, Etc.
- (4) O-200 Intake Spiders
- (3) C-182 Intake Manifold Risers

★ ★ CYLINDERS ★ ★

- (140) Lyc. 360/540 Cyls., Wide & Narrow Deck
- (40) Lyc. IO-540 Cyls.
- (10) Lyc. 540 J2BD Cyls.
- (117) Lyc. 320 Cylinders, Narrow & Wide Deck
- (39) Cont. O-235 Cyls.
- (16) Lyc. O-320 H2AD Cyls.
- (180) Cont. O-470 Cyls.
- (200) Cont. 520 Cyls.
- (33) Cont. E Series Cyls.
- Cont. 550 Cyl.
- (250) Cont. 65/85/200 Cyls.
- (5) Cont. IO-360 Cyls.
- (12) Cont. GTSIO Cyls.
- (6) Ranger Cyls.
- Radial Engine Cyls. to Include P&W 985 & 1340, & Jacobs



★ ★ ★ AVIONICS ★ ★ ★

- | | | | |
|---|--|--|--------------------------------|
| King KA-90 HSI Adapter | King KR-85 ADF | (2) Collins GLS350 Glide Slope Receivers | Glide Slope Ind. |
| King KN-77 VOR/ILS Converter | King KNS-81 RNAV | Large Selection of 300 Nav. Coms | Large Selection of Antennas |
| (2) King KXP-756 Transponder Receivers (1 w/Ind.) | King KG-102A Directional Gyro | Several Cessna & Narco ADF Ind's | STEC Autopilot Control Heads |
| King KDF-806 ADF Receiver w/Ind. | (2) King KN-73 Glide Slope Receivers | Several Cessna VOR Ind's | STEC Autopilot Control Boxes |
| (2) King KT-76A Transponders | Narco Mark 12E Nav. Com RT385A Nav. Coms | Several ADF's | Mitchell Autopilot Servos |
| King KT-76C Transponder | (3) Collins VIR-351 Nav.'s | Several DME's | Cessna Autopilot Control Heads |
| King KMA-24 Audio Panel | (2) Collins VIR-251 Coms | Several ELT's | Piper Autopilot Control Heads |
| Several KX-170A Nav. Coms | Collins Audio Panels | Several Blind Encoders | Piper Autopilot Control Heads |
| Several KX-170B Nav. Coms | (2) Collins VHF250 Coms | Voltage Converters | Autopilot Inv. |
| King KY-196A Com | Several Cessna Audio Panels | Garmin & GPS Annunciator Control Units | 100's of Radio Racks |
| | Narco Mark 12D Nav. Com | | |

★ ★ ★ INSTRUMENTS ★ ★ ★

- (1300+) Instruments to Include Tachometers, Cyl Temp, EGT's, Altimeters, Digital Clocks, Vertical Speed Ind.'s, Rate of Climb, Attitude Ind.'s, Course Ind.'s, Turn & Banks, Suction Gauges, De-Ice Gauges, 8-Day Clocks, Altitude Gyros, Airspeed Ind.'s, 3 in 1 Engine Gauges, Manifold Pressure, OAT & Elect. Gauges, Fuel Qty., Fuel Pressure, Manifold Pressure, Knot Ind.'s, Cluster Gauges, Cluster Gauge Inserts, Compasses, Suction Gauges, & Control Surface Gauges
- King KI226 RMI
- King KPI-550A RMI
- (2) KI205 Ind.'s
- (3) King KI-208 Indicators
- King KI-209 Indicators
- (2) King KI-203 Indicators

AUCTIONEER'S NOTE: Bob Willhoit, Owner of Central Air Parts, Inc., has decided to close down his Salvage Yard completely and devote his full time to running an F.B.O. Therefore, he has contracted with Starman Bros. Auctions to liquidate all assets of the Salvage Yard at Public Auction. This Auction will offer a Very Large Selection of Very Good General Aviation Inventory of all kinds. The majority of this Inventory is in Very Good Condition. Plan on long days of selling!

Everything sells "AS IS, WHERE IS," with no warranties implied or expressed. Neither the auctioneer nor owners shall be liable for any incorrect description, fault, or defect. Everything positively sells to the highest bidder. Payment must be made in full day of sale. No property removed until settled for. Auctioneer is not responsible for accidents or stolen property. All counts are approximate. Announcements made day of sale takes precedence over all printed material.

PAYMENT TERMS: Cash, Certified Funds, or Company Check ONLY if accompanied by Bank Letter of Guarantee!! NO EXCEPTIONS! Wire Transfers will be accepted with a 20% non-refundable deposit day of sale in one of the forms listed above. We also accept MasterCard and Visa with an additional 3% Buyer's Premium applicable.

PROXY BIDS: If you are unable to attend this auction we will bid on your behalf. For more info visit our web site at www.starmanauctions.com and click on Upcoming Auctions and scroll down to the Proxy Bid Section. Complete form and fax to (402) 592-2327 or call Steve at (402) 681-6456.

LOADING & REMOVAL: Once an item is sold the winning bidder is responsible for its removal. Any cost responsibility and risk of removal of purchases remain with the buyer. Removal may begin after payment in full and must be completed by the posted deadlines. NO EXCEPTIONS OR EXTENSIONS! There may be various trucking companies on site to arrange for transportation. However, it will be the buyer's responsibility to arrange their own trucking.

STARMAN BROS. AUCTIONS INC.
1240 Royal Drive • Papillion, NE 68046
(402) 592-1933 • FAX (402) 592-2327
www.starmanauctions.com

STARMAN BROS. AIRLINE SERVICES, INC.

www.starmanauctions.com