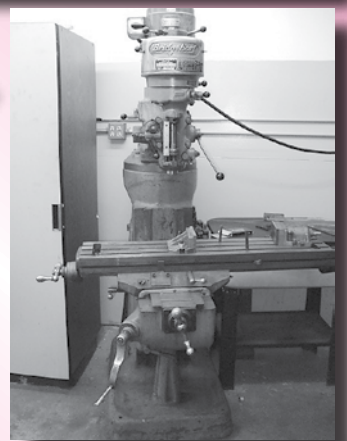
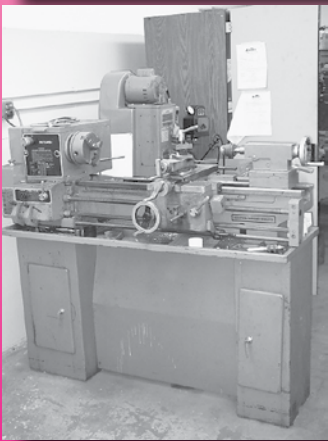


AVIATION AUCTION

Saturday, October 27, 2007
Starting at 9:00 A.M.

CRYSTAL SHAMROCK

6000 Douglas Drive N – Minneapolis, Minnesota
 Located on the Minneapolis Crystal Airport



PROXY BIDS

If you cannot attend this auction you can bid via Proxy Bid Form. To obtain this form go to our web site at www.starmanauctions and click on Upcoming Auctions, Scroll down to GET YOUR PROXY BID FORM HERE section.

NOTE

Flying Aircraft, Vehicles & Ramp Equipment will Sell at 1:00 PM followed by the Real Estate.

ABSOLUTE AUCTION - By Order of Secured Creditors

PRSR FIRST CLASS
 U.S. POSTAGE
PAID
 MAIL U.S.A.
 First Class

OPEN HOUSE
 Friday – October 26 – 9 A.M. to 4:30 P.M.

Sale Site Phone: Call Scott Moore (402) 681-3652 or Steve Starman (402) 681-6456

PAYMENT TERMS
 Cash, Certified Funds, or Company Check ONLY if accompanied by Bank Letter of Guarantee!! NO EXCEPTIONS! Wire Transfers will be accepted with a 20% Non-Refundable Deposit day of sale. We also accept Visa & MasterCard. An additional 3% Buyers Premium will apply to this auction. If payment is Cash, Check, Certified Funds or Wire Transfer the Additional 3% Buyers Premium will be waived.

FLYING AIRCRAFT TERMS
 Must be Cash or Certified Funds. A Company Check will be accepted ONLY with an IRREVOCABLE LETTER OF CREDIT from your bank. If a Wire Transfer or Bank Draft is used we need a 20% NON-REFUNDABLE DEPOSIT day of sale via one of the above mentioned forms.

Airline Connections Most Major Airlines into Minneapolis Int'l Airport. Rental Cars Available There. Private Aircraft Can Land at Minneapolis Crystal Airport.

HOTEL HEADQUARTERS

Ramada Inn Minneapolis Northwest 6900 Lakeland Ave. N (763) 367-5851	Crystal Motel 5650 Lakeland Ave. N (763) 537-3688	Baymont Inn & Suites 6415 James Circle N Brooklyn Center, MN (763) 561-8400
Country Inn & Suites 2550 Freeway Blvd. Brooklyn Center, MN (763) 561-0900		Crowne Plaza Minneapolis North 2200 Freeway Blvd. (763) 566-8000

Sale Conducted by

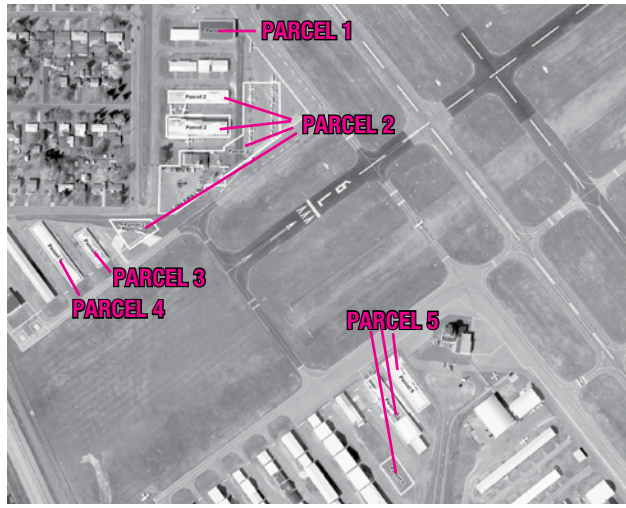
 1240 Royal Drive • Papillion, NE 68046-2082
 (402) 592-1933

In Conjunction With

 1025 Industrial Dr. • Spring Valley, MN 55975
 (507) 346-2440

STARMAN BROS. AUCTIONS INC.
 1240 Royal Drive • Papillion, NE 68046-2082
 (402) 592-1933
 Return Service Requested

REAL ESTATE – Building & Parcel Offerings



We are offering the buildings subject to their ongoing leases. The information provided here has been condensed to fit this brochure. Additional details and copies of current lease agreements are available on both Starman and Grafe Auction web sites. Pre-bid packets are available for download at www.grafeauction.com or by calling 800-328-5920.

All Sales are subject to Metropolitan Airports Commission (MAC) board of director's final approval in accordance to MAC requirements and ordinances. All bidders are recommended to submit an application to MAC on the approved application form available for download on our website. Early submission will expedite the final approval process.

Any interested party will be required to submit a pre-bid on each tract or the entirety by Tuesday, October 23, 2007 at 5:00 PM CST. Pre-bids are recommended to be within a reasonable range of the suggested opening bid to qualify to participate in the live bidding. All pre-bids are required to have attached, 10% of the bid price in the form of certified funds made payable to you. When you are designated as the successful bidder those funds

will be endorsed over to the auction company to be placed in escrow and considered as down payment which will be applied towards the final purchase at closing. All bids are subject to confirmation of high bid by the receiver for the secured creditor.

Any questions concerning the future lease arrangements with MAC may be directed to Kelly A. Gerads, Manager of Administration at 612-726-8142

Suggested Opening Bids (These opening bid amounts are merely to be used for information purposes and as an indication as to a fair opening bid. All reasonable bids within a range will be given serious consideration.)

Tract #	Brief Description	Suggested Opening Bid
Parcel 1	Lot 10A	\$50,000.00
Parcel 2	Lots 2, 4, 6, 30 & Auto Parking Fueling Area and Ramp	\$100,000.00
Parcel 3	Lot 28	\$15,000.00
Parcel 4	Lot 26	\$25,000.00
Parcel 5	Lot 11A, 13A, 13B, Tie Down	\$10,000.00

Parcel 1



Lot 10A (7,891.2 sq. ft.): This newer Morton style heated steel hanger is 64' x 123.3' with a pitched roof, 60' bi-fold hanger door, two roll-up doors and two side entry doors and 14' side walls. The interior walls are lined, the floor is concrete and the lighting is high intensity. This building would make an excellent opportunity for a private corporate hanger or most any aviation business.

Parcel 4



Lot 26 (8,076.25 sq. ft.): This parcel is improved with a 32.5' x 248.5' eight-place T Hanger pole shed with steel siding.

Parcel 2

Lots 2, 4, 6 and 30 (92,201.34 sq. ft.). This parcel contains the auto parking, fuel area and aircraft ramp area. The improvements consist of the 37.2' x 210' FBO building



comprised of the reception and waiting area, two executive offices, flight training facility with testing area, briefing room, pilots lounge, storage and bathrooms.

This parcel also includes the avionics and maintenance shop building which totals 9,341.7 sq/ft. This building has additional hanger space, office space, overhead storage rooms, parts rooms and lounge.

In addition to this parcel is a six unit T-hanger and storage facility. This building is a 37.2' x 212.3' pole shed with steel siding.

The paved auto parking area is approx. 19,000 sq/ft., the fueling area is 50' x 50' and the concrete aircraft ramp is approximately 37,950 sq/ft.

Also included in this parcel is Lot 30 which is a slightly irregular shaped concrete aircraft/storage ramp comprised of 7,700 sq/ft.

Parcel 3



Lot 28 (4,257.5 sq. ft.): This parcel is improved with a 32.5' x 131' four-place T-Hanger pole shed with steel siding.

Parcel 5

Lots 11B, 13A, 13B and the tie down area (24,360 sq. ft.): 11B is a vacant lot approx. 40' x 120'. Lot 13A is 30.4' x 181.3' with a four-place T-hanger, office and reception area and is joined by 13B which is a 48.2' x 82.9' corporate hanger with bi-fold door. The concrete tie down area is 50' x 166.30'

All measurements and dimensions have been provided by MAC. Bidders are urged to verify all information and go through proper due diligence. Each parcel will be offered as listed. Bidders may make pre-bids either on a single parcel basis, in its entirety or any combination thereof.

Bidders are reminded that you are only buying the improvements subject to the ground lease with MAC. Successful buyers on any parcel will have the option to move the improvements off of the premises if they desire.

Sale Conducted by

STARMAN BROS. AUCTIONS INC.

1240 Royal Drive • Papillion, NE 68046-2082
(402) 592-1933

In Conjunction With

GRAFE AUCTION

1025 Industrial Dr. • Spring Valley, MN 55975
(507) 346-2440

FLYING AIRCRAFT



1976 Piper PA-34-200T Seneca II, N4330X S/N 34-7670021

Airframe: 7184 Hrs Total Time
Engines: Cont. TS10 360-EB2B Engines (1800 Hrs T.B.O)
Left Engine: 920 Hrs SMOH
Right Engine: 710 Hrs SMOH
Avionics:
King KLN-89B GPS
King KMA-20 Audio Panel
Dual King KX-170B Nav Com's
King KT-76C Digital Transponder w/Encoder

King KR-86 ADF
King Glideslope/Marker Beacon
Narco NFD-36 HSI
3M WX-10 Stormscope
Hoskins Digital Fuel Flow Ind.
Century Automatic I/IC
Autopilot
P.S. Engineering 6 Place Intercom
Avionics Master

Options: New Style Heater, Club Seating, Electric Trim, Compass & Hobbs, Push to Talk, Tanis Heaters, Engine Covers & Cowl Plugs, Tail Beacon/Strobe, Gear Mirror, Flood Lights. Note: Annual Due 6/1/07, New ELT Battery Exp. Date 11/07, Aircraft has LoPresti Speed Mod. Kit added to Cows and Wing Tips w/Recognition Lights. Aircraft is Out of Annual And Will Need To Go Out On A Ferry Permit.



1975 Cessna T-310R, N8155A S/N 310R0025

Airframe: 3964 Hrs Total Time
Engines: Cont. TS10-520-B
Left Engine: 2.3 Hrs SMOH
Right Engine: 937 Hrs SMOH
Propellers:
Left Propellers: 998 Hrs Since NEW
Right Propellers: 998 Hrs Since NEW
Avionics:
King KMA-24 Audio Panel
King KLN-89B IFR GPS
King KX-165 Nav Com

King KX-155 Digital Nav Com
Dual King KT-76A Transponders
King KN-64 DME
King KCS-55A HSI
King Glidescope/Marker Beacon
BFG WX-900 Stormscope
Cessna 400B Autopilot
Sigtronics SPA-400 Intercom
Insight 1200 Gemini Graphic Engine Monitor System

Avionic Notes: The instrument panel is a custom built panel w/Pilot & Co-Pilot Instruments
Options: Full De-Ice (New Wing Boots), Hot Props, New C&D Heater, Vortex Generators, Oxygen System, Tanis Engine Heaters, Push to Talk Compass & Hobbs Meter, Visors, Engine & Pitot Covers, Cowl Plugs, Electric Trim, Passenger Configuration w/New Leather Seats, Newer Paint, Wing Locker Aux Tank. Note: Aircraft Logs Start in '02 w/1,176 TT



1976 Cessna 172M, N7326Q S/N 17267582

Airframe: 9,750 Hrs. T.T
Engine: Lyc. O-320-E2D
614 S.M.OH.
Avionics:
Garmin GNS 430 Moving Map
Garmin GTX 327 Mode C Digital Transponder

1980 Cessna 152
N5499B S/N 15283888
Airframe: 12,625 Hrs Total Time
Avionics:
RT 385 Nav Com
Intercom
Aircraft Has No Engine or Prop



Garmin GMA 340 Audio Switching Panel
King KX 155 Digital Nav Com
King KI 209 Nav Indicator
S-Tec 40 Autopilot



NEW CESSNA & MISC AIRFRAME INV

New Cessna 152, 172 & 182 Inventory to Include Strut Cuffs, Stab Tips, Wing Tips, Cargo Tie Down Hooks, Seatbelts, Brackets, Control Surface Bearings, Inverter Bolt Kits, Lord Mounts, Control Surface Pulleys, Elect Resistors, Switches, Door Seals, Inspection Plates, Filters, Bracket Air Filters, Control Cables, Oxygen Regulators, Fuel Sending Units, Control Surface Skins, Stiffeners, Baffling, Master Switches, Light Assys, Steering Rods, Placards, Cables, Vent Tubes, Seat Rail

New Cessna Control Cables, Leading Edge Skins, Exhaust Stacks, Door Panels, Accy Drive Belts, Door Handles
New Cessna Lift Detectors
(3) New Spinners
(9) New Goodrich Prop De-Ice Boots for 300 & 400 Series Cessna
New Fire Shield

New Piper Interior Plastic, Seals, Knobs, Receptacles, Solenoids, Etc.
Misc. New Mooney & Beech Inventory
New CHT Probes
New Mooney M20 Ribs
New Mooney M20J Wing Skin
Good Selection of Scat & Hydraulic Hoses

VEHICLES, FUEL TRUCKS & RAMP EQUIPMENT



1998 Dodge Ram 2500 4x4 Pickup, 5.9 Liter V-8 Gas, Auto w/Overdrive, Cruise, A/C, AM/FM Cassette, Western 8' 6" Snow Plow w/Controller

Military Pre Heater Cart
(3) Lawn Boy Push Mowers
Ryobi 31cc Weed Eater



1980 GMC Sierra 35 700 Gal Jet A Truck, 4-Speed, 6 Cyl Gas Engine, 101,938 Miles, Browntank 700 Gal Stainless Tank Mfg '79, Top & Bottom Load, Single Reel Over Wing Nozzle
1989 Chevy 3500 Gal AvGas Truck, 4-Speed, 5.7 Liter V8 Gas, 700 Gal Aluminum Tank, Top & Bottom Load, Single Reel w/Over Wing Nozzle
1980 GMC Sierra 35 700 Gal AvGas Truck, Steel Tank, 4-Speed, Straight 6 Cyl Gas, Top & Bottom Load Single Reel w/Over Wing Nozzle.

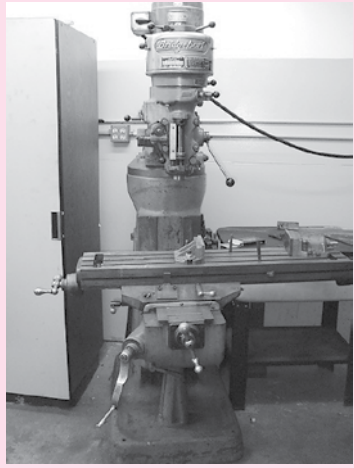


Yale Mdl L51050 Forklift, 4 Cyl Propane Engine, 6' Triple Stage Mast, Solid Pneumatic Tires
Hobart Drive Around Start Cart 24 Volt, 600 Amp, 6 Cyl Flat Head Gas Engine
Wheel Horse Mdl C-120 Aircraft Tug, Kohler Gas Engine, Hydrostat Drive

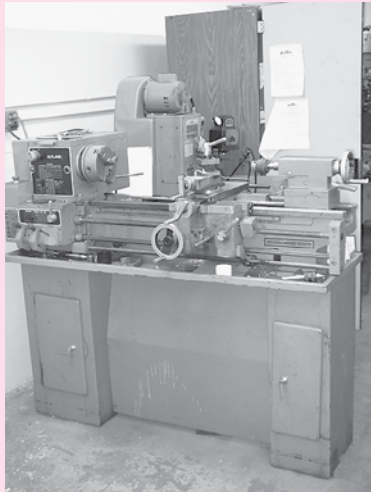


2001 Harley Davidson Screaming Eagle Road Glide Motorcycle w/117 cu. in., B&A Cylinder Heads, TW8G Woods Canshaft, BC Throttle Body Modification, 1045R Roller Rockers, Titanium Pushrods, Resized Injectors, PCIIR Power Commanders, Thunderheader 2 into 1 Exhaust, trunk, 6-disk CD Changer & More, Dyno #: 126 Torque, 103 HP

SHOP EQUIPMENT



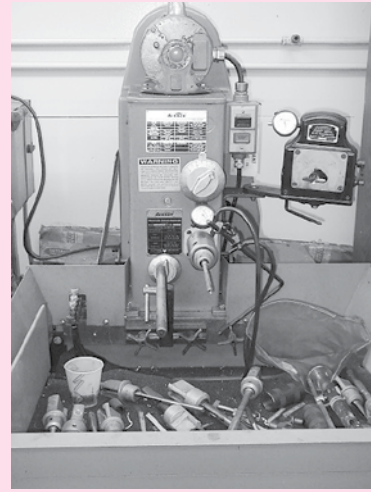
Bridgeport Vertical Milling Machine, 1HP Motor, Spindle Speed 80-2720, 9' x 42" Bed



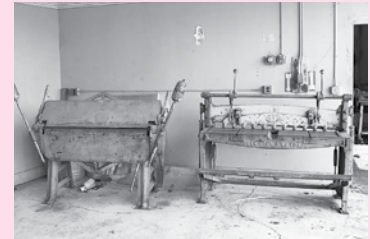
Rutland Mdl 2649-1190 Lathe, Mfg 1988, 3-Jaw Chuck, Tool Holder, 1-1/2 ID Feed Thru



Magnaflex Type DR-543 Magnaflex Machine 6' Bed, AC Volts, 3000 Amps Max w/Black Lights



Sunnen Precision Honing Machine Mdl L33-1699 w/Sunnen AG-300 Pin Fitting Gauge



Pexto 52", 16 Gauge Sheet Metal Shear
Chicago 48" Sheet Metal Brake
Borroughs 2-Place Cylinder Heat Table
Engine Build Stands
9" x 12" Granite Surface Plate
Zyglo Black Light
8" Diameter Mechanist Rotary Table
Weidenhoff Magneto Tester 1/3 HP Elect Motor
Aero Equipment Mdl 625A Fuel Mixture Analyzer

Miller Syncrowave 180SD AC/DC Squarewave Power Source w/Tig Attachment & Foot Control
Empire Mdl PF-3648 Bead Blast Machine

San Born 5 HP 2-Stage Vertical Air Compressor
Wayne 2-Stage Vertical Air Compressor
Sioux Mdl 2001 Wet Valve Face Grinder
US Tools Bench Top Sheet Metal Shrinker
Generac Pressure Washer 2400 PSI, 2.5 GPM, Honda 5.5 HP Engine



(2) Ward Aero 36" 3-Ton Tripod Jacks w/ Extensions
(2) Ward Aero 24" 3-Ton Tripod Jacks
(2) Meyers 36" 3-Ton Tripod Jacks
(6) Shop Built 24" Tripod Jacks
(3) Tail Stands
42" Shop Built Tripod Jack Stands

Borroughs Cylinder Working Fixture
Kwik-Way Valve Seat Driver w/Stones
Atlas Mdl 1080 Variable Speed Drill Press
Ward Aero Engine Hoist
Super Clean Master Mdl 50 Parts Washer
On Site Solvent Cleaning Machine
(2) Dipping Tanks
Enerpac H-Frame Press
Spot Welder
Dake Model O Arbor Press
Solar 6/12/24 Volt Battery Charger/Booster
Schumacher 6/12 Battery Charger
Snap On 7-Drawer Tool Cabinet
6-Drawer Tool Cabinet w/6-Drawer Top Box
3HP Portable Air Compressor
Campbell Housfield Air Bottle
Tire Bead Breaker
Aircraft Wheel Balancer

Salamander Heater
Oxy/Acetylene Torch w/Cart
(3) Kerosene Heaters
(2) Bracket Style Tow Bars
(15) Tow Bars
Misc. Aluminum & Fiberglass Step Ladders
16' Extension Ladder
10' Maintenance Stairs
(4) Roll-a-Round Parts Carts
Bench Grinders & Vices
1-1/2 & 3-1/2 Ton Floor Jacks
Overnite Rag Cans
(3) 40 Gal Hand Pump Oil Dispensers
Craftsman 16 Gal Wet/Dry Shop Vac
Barrel Stands & Dolly's
Good Selection of Sunnen Honing Stones



Cessna 3,000 LB Hydro Test Mule

ENGINE & SPECIALTY TOOLS



10" Rigid Boroscope
Garrett Turbo Controller Test Set P/N 481070
Barfield Mdl 2548GA Fuel Quantity System Test Set
AVI Mdl 74D-81T Fuel Inlet Valve Test Set
Sandia STT 20 Fuel Flow Test Transducer
Cessna 0580001-1 Fuel Quantity Test Box
Aero Fuel Injection Test Set Mdl 20ATM
Borroughs Valve Seat Driver Set
Sunnen Bore Gauge
Borroughs Mdl 64597 Bushing Removal/Install Plate
Borroughs Mdl 4965 Counter Weight Bushing Tools
Borroughs Case Drilling Fixture
Valve Seat Cutters
Sunnen P-310 Valve Guide Gauge Set
Case Splitter
Borroughs Mdl 8028 Fixture
Marvel Schebler Carb Tools
Several Engine Specialty Drivers & Tools
Lycoming Crankshaft Sludge Tube Tool
Lycoming ST-388 Reaming Tool
Marvel Schebler Venturi Tool



Wet Valve Seat Inst Tool
10" & 15" Rigid Boroscopes
Alcal EGT System Tester
Airborne 343 Vac Test Set
Lamar Mdl TE04 Cessna MCU Test Set
Cessna Regulator & Alternator Field Test Set
Whelen Strobe Light Test Set
Cessna Mdl C5-1 Calibrated Heat Source
Woodward Test Box P/N 213600
Amsaf V23 System Inflatable Restraint Test Set
Provision 300 3' Flexible Boroscope
Mooney Elevator Travel Board
Bellanca Rigging Boards
Beech Wing Wrench Adapter
Specialty Tools to Include C-172 Wing Twist Gauge, PA-32 Aileron Rig Tool, Stab Tool, PA-31 L/G Gauge, Beech Wing Wrenches, Cherokee Control Surface Rigging Tools, Cessna Exhaust Wrench, Cessna 300 & 400 Series Aileron & Rudder Rigging Gauge, L/G Rigging Tools, Cessna 210 Main Gear Saddle Replacement Tool

HAND TOOLS

Aero Equipment Mdl 500A Aircraft Ignition System Analyzer
Aero Equipment Mdl 555A Electrical Analyzer
Snap On Armature Growler
(4) Soldering Guns & Irons
Green Lee Chassis Punch Set 3/4" - 3-1/8" Diameters
Shimpo DT205 Digital Tachometer
Slick Mag Harness Tool
Slick Mag Tools
Burndy MY29-3 Terminal Swagger
Eastern Mag Synchronizer
Universal Timing Indicator
Bendix Mag Tools
Blue Point Spark Plug Gap Set
Helicoil Kits
Borroughs Valve Spring Compressor
Cylinder Base Wrenches
Misc Valve Spring Compressor
Several Ball Hones
Champion Spark Plug Gapper
Eastern Mdl E10 Cold Cylinder Tester
Borroughs V Blocks
Valve Lapping Tool
Borroughs Gauge Set
Piston Ring File
Borroughs BT-7517 Hand Vacuum Pump
Starrett Depth Gauge
(2) Pneumatic Rivet Hammers
(2) Pneumatic Screw Guns
Snap On Inch/Lb Torque Wrench
Blue Point Tap & Die Set
Center Punch Set
Several Bucking Bars
Rivet Cutters
Rivet Layout Tool

Brake Riveter
Clecos
Several Dzus Tools
Snap On Tubing Cutter & Flaring Kit
Rivnut Removal Tool
Snap On 175 Ft/Lb Torque Wrench
Imperial Tubing Bender
Tubing Flaring Tools
(2) Kent-Moore Mdl BT33 Cable Tensiometers
(2) Mdl T5 Cable Tensiometer
Enterprise Add-A-Nut Puller
Maule Fabric Tester
Sey Both Fabric Tester
Sioux 1/4" Electric Angle Drill
Kroy Label Maker
Brittain Ind Mdl TS-100 Vacuum Test Set
Devil Biss Paint Gun
Craftsman 1/2" Drill
(4) Rivnut Tools
Craftsman 3" Belt Sander
High Pressure Tire Gauge
B&D Drill Bit Sharpener
Mdl 64, 60 Lb. Shipping Scale
Hanson 100 Lb Spring Scale
Imperial AC Recharge Manifold
Hole Saws
Masking Paper Dispenser
(9) Aircraft Jumper Cables
Bolt Cutters
(2) Mechanics Creepers
Several Grease Guns
Misc Jack Pads
Several Gas Cans
Spark Plug Caddies
Several Extension Cords
Misc Aircraft Cleaning Supplies

ACCESSORIES & INVENTORY

O/H MA4-5 Carb
O/H MA3-A Carb
MA3 & MA4 SPA Carburetors
(6) O/H 12 & 24 Volt Starters
(4) O/H Alternators
New Ward Aero 28 Volt Alternator
O/H Prestolite Starter Armature
(4) Starter Cores
(8) Alternator Cores
New & O/H Starter Inventory to Include Armatures, Mounts, Etc.
(3) New Cont Fuel Injection Pumps
(2) New Fuel Injection Flow Dividers
Fuel Injection Flow Divider Core
(2) New Slick 4 & 6 Cylinder Magnets
(2) New Slick 4 & 6 Cyl Magneto Harnesses

(2) Slick 6 Cyl Mag Cores
New Slick Magneto O/H Inventory to Include Hardware, Impulse Couplings, Seals, Capacitors, Etc.
(3) New RAPCO 442 & 216 CW Dry Vac Pumps
(14) Dry Vac Pump Core
New Dukes Fuel Pump
(6) New & Core Mechanical Fuel Pumps
New Lycoming Starter Ring Gear 60882
TSIO Starter Adapter
Oil Coolers
New Tach Generator
New Vac Filters
New Bendix Inventory to Include Starter Vibrators, Hardware, Harnesses, Lead Kits, Felts, Gears, Coils, Brackets, Clamps, Etc.

NEW CONTINENTAL & LYCOMING INV

New Continental & Lycoming Engine Inventory to Include Dipstick Housings, Bearing Sets, Valves, Pistons, Push Rods, Tappets, Piston Rings, Studs, Seals, Hardware, Rocker Box Gaskets, Clamps, Push Rod Housings, Tach Drive Adapters, Alt Brackets, Crush Gaskets, Rod Bolts, Intake Adapters, Turbo Gaskets, Etc.
Good Selection of New Lycoming & Continental Valve Seats & Guides
O/H Lycoming O-235-L2C Crankshaft
O/H Cont Camshaft P/N 629726AE
Lycoming O-235 L2C Case
TSIO-520 Turbo Transition Pipe
A/R Engine Inventory to Include Lycoming Rods, Gears, Valves, Rocker Arms, Push Rods, Hardware, Etc.
Radial Engine Blower Section



USED AIRFRAME

C-152 Top Cowl
Cessna Wheel Pants
Cessna Aileron
C-150 Fuel Tank

(2) Aircraft Ferry Tanks
Used Cessna Strut Cuffs
Aircraft Covers
Cessna Winter Baffles

NEW TIRES, WHEEL & BRAKE INV

(3) New 5.00-5 Tires
(5) New 6.00-6 Tires
(3) New 6.50-10 Tires
(3) New 8.00-6 Tires
(2) New 7.00-6 Tires
New Cleveland Brake Pucks

New Cleveland Brake Discs
P/N 164-00806
New Timken Bearings
(3) New 15 x 6.00-6 Tires
(2) 6.00-6 Wheels
(4) 6.50-10 Wheels
Several New Tire Tubes
(10) Mufflers

NEW HARDWARE

New MS & NAS Hardware to Include Bolts, Bushings, Castle Nuts, Wing Bolts, Roll Pins, Washers, Bearings, Hyd. Fittings, Rivets, Clamps, Cherry Rivets, Lock Washers, Grommets, Crush Washers, Nut Plates, Etc.

AN Hardware to Include Screws, Bolts, Clamps, Hyd Fittings, Castle Nuts, Friction Nuts, Etc.

MS & NAS Adel Clamps, Packing Anglo O-Rings, Lock Nuts, Hinge Pins, Etc.
Rivnut Inventory

Cowl Fasteners
Shrink Tubes

PROPELLERS

New Sensenich Fixed Pitch Prop Mdl 72CK56-0-54
Hartzell 3-Bladed Prop
(3) McCauley Fixed Pitch Props
(4) Fixed Pitch Props

OIL, FILTERS & PLUGS

(24) Oil Filters to Include CH48103, CH48104, CH48108, CH48110, CH48111

Several Spark Plugs RHB32E- RHM38E
Igniter Plugs P/N AGF2-6

(30) Cases of Aeroshell 65W, 80W, 15W-50, 100W, 20W-50XC

NEW ELECTRICAL INV

New Electrical Inventory to Include Solenoids, Switches, Miniature Lamps, Sealed Beams, Lamar Alternator Controllers, Fuses, Whelen Flash Tubes, Circuit Breakers, Rocker Switches, Nav Light Bulbs, Nav Lights, Etc.

New Solenoids (2) Hi Line Kits
Electrical Terminal Kits
Good Selection of GE Lighting

(7) New Gill Batteries Mdl G25, G242, G243, G35

PHONE & SECURITY SYSTEM & COMPUTERS

AT & T Partner 34D Phone System w/Partner CA48 Extension Module w/ (7) Phones and (1) Base Phone

Security System-Samsung 16" B&W Security Monitor, (3) Samsung SSC-17C B&W Mini Cameras, Samsung Mini Camera in Bubble

Dell Power Edge 2500 Server w/Windows 2000

(4) Trademark PC's w/Windows 98

(4) Digital 14" Color Monitors

HP XE748 PC w/CD Writer, Windows 2000

Amoria PC w/Windows 2000

Envision 14" Flat Screen Color Monitor

Samsung 790DF 16" Color Monitor

HP Pavillion 15" Color Monitor

Hewlett Packard Laser Jet 2100 Printer

Hewlett Packard Desk Jet 694C Color Printer

(2) HP All-In-One Copier, Fax, Scanner, Printer

HP PSC 2210 All-In-One Copier, Fax, Printer, Scanner

Cisco PIX 501 Firewall

Net Pia Router

Air Plus 2.4 GHZ Wireless Access Point

APC XS 1000 Battery Backup

AUCTIONEER'S NOTE: Crystal Shamrock has been shut down and Starman Bros. Auctions, Inc. has been contracted by the Secured Creditors to sell all Assets at Public Auction. This Auction offers a very good selection of Shop & Avionics Test Equipment as well as some very good Specialty Tools and large amount of New Inventory. Also being offered are some very nice Aircraft, Vehicles & Ramp Equipment.

Everything Sells "AS IS" "WHERE IS" with No Warranties Implied or Expressed. Neither the Auctioneer nor Owners shall be liable for any incorrect Description, Fault, or Defect. Everything positively sells to the highest bidder. Payment must be made in full day of sale. No property removed until settled for. Auctioneer is NOT RESPONSIBLE for Accidents or Stolen Property. All counts are approximate.

AVIONICS TEST EQUIPMENT



IFR ATC-600A Transponder Test Set
IFR ATC-1200Y3 XPDR/DME Simulator
IFR NAV-401L Ramp Test Set
Aircraft Instruments Pitot Static Tester Mdl 393
TIC Type T-12-2A Glide Slope Head Test Panel
TIC Type T12A Nav Com Generator
Ryan WX-PT Digital Portable Stormscope Tester/Analyzer
King KFC 200 Flight Control System Test Set
King KTS156 Test Box
Mitchell Mdl 66D141 Autopilot Test Set
LinAire LV-5 Localizer Test Panel
(2) LinAire LA-5 Transponder Test Panel
LinAire LR-1 RNAV/DME Test Panel
LinAire LX-3B Transponder Test Panel
LinAire LM-3 Marker Beacon Test Panel
LinAire LG-4 Glideslope Test Panel
LinAire LD-4 DME Test Panel
ARC H-43 Autopilot Test Panel
ARC H-42A Field Test Set
MFJ HF/VHF SWR Analyzer Mdl MFJ-259
Hitachi Mdl 100 MHZ 2-Channel Oscilloscope
CEI Mdl UTC8030 Universal Counter
Solar Mdl 28510 DC Power Supply 35V & 7Amps Max Output

SCC DC Power Supply
Schlumberger Mdl SP-27A AC/DC Power Supply
(2) HP Mdl 606A Signal Generator
Carter Mdl CES116A ADF Signal Simulator
BK Precision Mdl 830 Auto Ranging Capacitance Meter
Fluke 87 Digital Multimeter
Fluke Mdl 8050 Digital Multimeter
HP 2048 Oscillator
Boonton Mdl 8210 Digital Modulation Meter
ARNAV LS-10A Loran C Simulator Test Set
EICO Mdl 1140 Resistor/Capacitor Test Box
Shop Built Avionics Shaker Table
Terra Test Harness TXN 960 System, TRT-250, TMA-230
SP-100B & 105A Breakout Box
HP Mdl 410 Vacuum Tube Voltmeter
King Test Harness to Include KMA 12, 20, 24H, KA-25, KN61, 62/64, 65, KT75, 75R, 76, 76A, 78A, KNS 80, KR 85, KR 86, KY 92, KA 134, KX 145, KX 170, 175, KY 196, 197, KI 201-211, KX 165, KN73, KNC 610, KXP 750, KDM 700
Narco & ARC Test Harness AT50, VOA 4-9, MBTR, NAV 11, 12, Com 11, Mark 16, 24, DME 190, 70, Nav 124, VOA 40/50, Nav 825, Nav 121, 121, DME 890, Com 810, ADF 140, RT 385, R 546, R 443, RT 428, R 402, RT 514, 400 DME, RT 542, 400 RNAV, AMR 350, TDR 950, GLS-350
Several Radio Shop Signs

INSTRUMENTS, AVIONICS & INV

(70+) Instruments ADI, Radar Altimeters, WX-6 Stormscope, Electric Clocks, Turn & Banks, Manifold Pressure Gauges, Turn & Banks, Altimeters, Suction Gauges, Gyros, Course Indicators, Etc.
(2) King KX170 Nav/Coms
(8) RT385 Nav Coms

King KMA20 Audio Switching Panel & Several Others
King KI-211B Course Indicator
Narco AT50 Transponder
Trimble TNL 200A GPS
TKM 385 Digital Nav Coms
King KNR 630 Nav Receiver
Several KN65 DME's

400 DME Control Units
Altitude Encoders & Digitizers
Narco Com 10A
ELT's
Narco Altitude Reporters
King KNS 80 Nav System
Narco DME190
Narco ADF 140

(6) Tach Indicators
Cluster Gauges

New Avionics Repair Parts for King, ARC, Sperry, Narco & David Clark to Include Switches, Lamps, Diodes, Placards, Rheostats, Face Plates, Connectors, Resistors, Doublers, IC Sockets, Clamps, Hardware
Avionics Wire & Cart
Several Radio Racks & Installation Inventory

Hi-Line Electrical Cabinet
Several Boxes of Used Avionics Harnesses, Canon Plugs, Hardware & Repair Inventory
(8) Telex & David Clark Headsets
Misc ARC Avionics Boxes
Several Antennas
Several Instrument Cutaways

MANUALS, MICROFICHE & PILOT TRAINING EQUIP

(120) Maintenance & O/H Manuals for Cessna 150/172, Cessna 180/182, Cessna 185, Cessna 188, Cessna 190/195, Cessna 205/206/207, Cessna 310, Cessna 336/337, Cessna 340/320, Cessna 400 Series (401-421), Beech 18, Bonanza Mdl 19, 23 & 24, 58 Baron, 88 Queen Air, Rockwell Commander, Mooney M20, Bellanca Viking, Piper PA-23, PA-24 180-400, PA-28, PA-32, Cessna Conquest

(32) Manuals to Include Cont I0360, I0470, Tiara, TSIO-360, I0520, Lycoming O320, Marvel Schebler, Cont Fuel Injection, Slick Magneto, Bendix Mag
Garmin CNX80/MX20 & GPS400/430 Simulator & Demo CD's

Pilot Training Tapes & Training Aids

Microfiche Readers & Library

Sylvania 19" Color TV

Proxima LCD Projector

Overhead Projector

Pull Down Projector Screen

Memorex 4-Head Hi Fi VCR

Audio/Video Cart

Honeywell Technical, Install & Maintenance CD's

Log Books, Nav Plotter & Misc Pilot Supplies



(300+) Avionics Manuals for 300 & 400 Cessna, King KNS 62/63, KN 53, KNS 80, KR 86, KY 96, KCS 55, KY 196, KI 212, KI 226, KDI 574, KDM 700, KDM 205, KFC 200, KA 120, KA 52, KA 162, Edo Aire Auto Pilot, Narco MK 12D, Nav 825, Com 120, ADF 141, DME 190, 891, WX 10, Series II Stormscope, Century Autopilot, Terra

OFFICE EQUIPMENT

Crane 485 Snack & Cold Drink Vending Machine w/Dollar Bill Changer S/N 48510781; (3) 6' x 16" deep x 48" high Glass Display Cases w/Sliding Doors & Glass Shelves; 6' x 20" Deep x 37-1/2" High Glass Display Case; 2-Door Wall Display Case; Several of 5' Metal Office Desks; 8' Office Desk; Black Swivel Executive Office Chairs; (2) Black Office Side Chairs; Sharp AL-1631 Copier w/Reducing & Enlarging; Xerox 230ST Document Center; HP Laser Jet 5 SIMX Copier; Sharp UX-A1000 Plain Paper Inkjet Fax Machine; Several Swivel Office Chairs; (7) 2-Drawer File Cabinets; (3) 3-Drawer File Cabinets; (7) 4-Drawer File Cabinets; (2) Multi Colored Cloth Love Seats; Multi Color Cloth 3-Cushion Couch; Whirlpool Refrigerator; Cold Spot Apartment Size Refrigerator; (2) Sharp 1/2 pint Microwave Ovens; Kenmore Microwave Oven; (5) Modular Office Cubes; (4) Bar Stools w/Arms; (7) 6' Folding Banquet Tables; (24) Metal Folding Chairs; (7) Metal Frame Stack Chairs; Verifone Omni 3750 Credit Card Machine; Sentry S3877 Electronic Touch Pad Safe; Simplex 100 Digital Time Clock; Digital Time Clock; Brother P-Touch Label Maker; Cincinnati Time Clock w/Card Rack; Several 2-Door Cabinets; Hoover Steam Vac Ultra; Bissel Hepa & Kirby Vacuums; Outdoor Picnic Table; 11" Round Security Mirror; (2) Coat Trees; Bogen C35B Amp; Large Qty. Office Supplies

Sale Conducted by

STARMAN BROS. AUCTIONS INC.

1240 Royal Drive • Papillion, NE 68046-2082
(402) 592-1933

In Conjunction With

GRAFE AUCTION

1025 Industrial Dr. • Spring Valley, MN 55975
(507) 346-2440