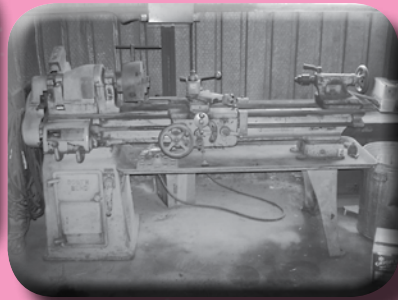


AVIATION AUCTION

LARGE FULL SERVICE FBO

Saturday, December 4, 2010
Starting at 9:00 A.M.

**DECATUR-ATHENS
 AERO SERVICE**
 21190 Flightline Rd ~ Pryor Regional Airport
 Tanner (Decatur), Alabama



SALE SITE PHONE
(256) 355-5770

**ABSOLUTE
 AUCTION!**

AIRLINE CONNECTIONS

There are some Commercial Flights into Huntsville, Alabama (Approx. 13 Miles), or Birmingham, AL (Approx. 80 Miles) has Several Airlines. Nashville, TN is Approx. 90 Miles North. Private Aircraft can Land at Pryor Field Airport Athens. The Identifier is DCU, Unicom 123.075.

HOTELS

Holiday Inn
 1101 6th Ave NE
 Decatur, AL
 (256) 355-3150

Comfort Inn
 2212 Daville Rd SW
 Decatur, AL
 (256) 355-1999

Country Inn & Suites
 807 Bank St NE
 Decatur, AL
 (256) 355-6800

Hampton Inn
 2041 Beltline Rd SW
 Decatur, AL
 (256) 355-5888



STARMAN BROS. AUCTIONS INC.

1240 Royal Drive ▪ Papillion, NE 68046
 (402) 592-1933 ▪ FAX (402) 592-2327
www.starmanauctions.com

STARMAN BROS. AIRLINE SERVICES, INC.

Check Out Our Web Site...

www.starmanauctions.com

PRSR FIRST CLASS
 U.S. POSTAGE
PAID
 MAIL U.S.A.

First Class

STARMAN BROS. AUCTIONS INC.

1240 Royal Drive ▪ Papillion, NE 68046
 (402) 592-1933
www.starmanauctions.com

Return Service Requested

★★★ FLYING AIRCRAFT ★★★



1969 Piper PA-30C Twin Comanche
N-8695Y S/N 30-1841
 Total Time: 5,282 Hrs.
 Engines: Lyc IO-320-B1A, Left & Right Engines: 1,255 Hrs. S.M.O.H.,
 Props: Left & Right 318 Hrs. S.O.H.
 Avionics: King KMA-24 Audio Panel w/3-Lite, King KX-165 Nav Com w/HSI, King KX-155 Nav Com w/Glideslope, King KN-64 DME, King KR-87 ADF, Apollo Alti-Track, Altimatic IIIB Autopilot, Northstar M-3 GPS
 Fresh Annual 11/2010, Fresh Interior & Seats, All Logs, Done At Overhaul are All New Engine Hoses, New Air Filters, New Landing Gear Bungee Cords & Steering Rod Boots, L/H Boost Pump "O/H", Combustion Heater Pressure Regulator Switch "O/H", Very Good Aircraft



1975 Cessna 172-M
N-61972 S/N 17264928
 Total Time: 4,258 Hrs.
 Engine: Lyc O-320-D2J (Ram Conversion), 160 HP, 1,692 Hrs. S.M.O.H.
 Avionics: Terra TMA-350-D Audio Panel w/3-Lite Marker, Dual King KX-170B Nav Coms, Narco AT-165TSO Transponder, King KR-85 ADF, Garmin GPS-150XL GPS
 Interior 7, Paint 6, Has some hail damage, All Original Log Books



1974 Cessna 150-L
N-10944 S/N 15075155
 Total Time: 7,794 Hrs.,
 Engine: Cont O-200-A, 1,099 Hrs. S.M.O.H.
 Avionics: King KX-170B Nav Com, Narco AT-150 TSO Transponder, P.S. Mdl PM-1000II Intercom
 All Original Log Books, Interior 4, Paint 5



1966 Piper PA-360 Twin Comanche
N-8226Y
 Total Time: 5,600 Hrs.
 Engines: Lyc IO-320-B1A, Right: 900 Hrs. S.M.O.H, Left: 1,380 Hrs. S.M.O.H.
 Avionics: Dual King KX-155 Nav Coms, Narco AT-150 Transponder, Narco DME-190, Garmin GPS Map 196, Stormscope WX-950 Series II Weather Mapping System, Century II-B Autopilot, 4-Place Intercom
 All Logs, Wing Tip Strobes, Pitot Heat, Gray & Blue Leather Seats, Annual 9/10/10, Extremely Well-Maintained Aircraft



1963 Cessna 172
N-3212U S/N 1825-4612
 Total Time 5,027 Hrs.
 Engine: Cont. O-470-R - 863 Hrs. S.M.O.H.
 Propeller: McCauley 3 Blade
 Avionics: King KMA-20 Audio Panel w/3 Light MB, King KX125 NAV/COM, King KT76A Transponder, Narco NAV 825, Garmin GPS 400, Garmin GNC 250XL, David Clark 2 Place Intercom, Vertical Card Compass.
 Interior 6, Paint 7 1/2 (Showing Hail Damage), Cleveland Wheel STC, All Original Logs, Minor Damage History, Last Annual Done 4/16/10



1977 Cessna 152 Sparrow Hawk Conversion
N-757CQ S/N 15279636
 Total Time: 8,158 Hrs.
 Engine: Lyc. O-235-L2C (125 HP Sparrow Hawk) - 822 Hrs. S.M.O.H.
 Propeller: Sensenich Fixed Pitch
 Avionics: King KMA-20 Audio Panel w/3 Light MB, Dual RT-385A NAV/COM's, Narco AT-165 TSO Transponder, Cessna 300 ADF, PS Engineering PM1000II 2 Place Intercom.
 Interior 4, Paint 4, All Original Logs, Last Annual 4/12/10



1974 Piper PA-28R-200 Arrow
N-41451 S/N 28R-7435185
 Total Time: 8,361 Hrs., Engine: Lyc. IO-360-C1C 2,060 Hrs. S.M.O.H.
 Propeller: Hartzell 2-Bladed Prop, Overhauled 6/29/07
 Avionics: King KMA-20 Audio Panel, Dual King KX-155 Nav Coms, King KT-76A Transponder, King KN-64 DME, M-1 Loran, Piper Auto Control III Auto Pilot, P.S. Mdl PM-1000II Intercom, Vertical Card Compass
 Last Annual Done 4/19/2010, Interior 6, Could use paint, Original Logs



1968 Cessna 172
N78332 S/N 17257569
 Total Time: 4,242 Hrs.
 Engine: Lyc. O-320-E2D (RAM Conversion 160 HP) 1,451 Hrs. S.M.O.H.
 Propeller: McCauley Fixed Pitch
 Avionics: Terra TMA-330-D Audio Panel w/3 Light MB, King KT76A Transponder, King KX170B NAV/COM, MX300 Dual Digital NAV/COM, Garmin GPS150, Vertical Card Compass, PS Engineering PM1000II 2 Place Intercom.
 Interior 5, Paint 5 1/2 (Needs Touch Up), Composite Spinner STC, All Original Logs, Last Annual Done 6/14/10



1975 Cessna 150-M
N-6253K S/N 150-77610
 Total Time: 6,712 Hrs.
 Engine Cont O-200, 1,202 Hrs S.M.O.H.
 Avionics: MX-300 Dual Digital Nav Com, King KT-76A Transponder, P.S. 1000II Intercom
 All Logs, Interior 3.5, Paint 5



1977 Piper PA-28-161 Warrior
N-2635Q S/N 28-7716115
 Total Time: 6,167 Hrs.
 Engine: Lyc. O-320-D3G 2,973 Hrs. S.M.O.H.
 Avionics: King KMA20 Audio Panel w/3 Light MB, Dual King KX170B NAV/COM's, King KT76A Transponder, King KN62A DME, Garmin GPS 150XL, Avionics Master Switch, Vertical Card Compass, PS Engineering PM1000II 2 Place Intercom.
 Interior 5, Paint 5, Rebuilt Rudder, All Original Logs, Last Annual Done 3/3/10

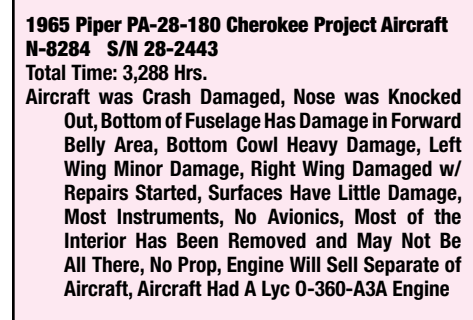


1978 Cessna 152 Sparrow Hawk Conversion
N-49864 S/N 15281368
 Total Time: 5,481 Hrs.
 Engine: Lyc. O-235-L2C-M (125 HP Sparrow Hawk) - 167 Hrs. S.M.O.H.
 Propeller: Sensenich Fixed Pitch
 Avionics: Collins VHF-251 COM, Collins VIR-351 NAV, Narco AT-150 TSO Transponder, PS Engineering PM1000II 2 Place Intercom
 Interior 4, Paint 5, All Original Logs, Last Annual 5/3/10

PROJECT AIRCRAFT



1964 Cessna 150E Project Aircraft
N-6092T S/N 150-60792
 Total Time: 2,909 Hrs.
 Engine: O-200-A, 1,465 Hrs. S.M.O.H.
 Aircraft had a hard landing and collapsed the nose gear and has since been repaired. Bottom of Cowl & Nose Bowl has had repairs made (No Log Book Entries for Repairs), New Propeller in 1999, Aircraft is together.
 Avionics: King KX-175 Nav Com, Bendix TR-661A Transponder



1965 Piper PA-28-180 Cherokee Project Aircraft
N-8284 S/N 28-2443
 Total Time: 3,288 Hrs.
 Aircraft was Crash Damaged, Nose was Knocked Out, Bottom of Fuselage Has Damage in Forward Belly Area, Bottom Cowl Heavy Damage, Left Wing Minor Damage, Right Wing Damaged w/ Repairs Started, Surfaces Have Little Damage, Most Instruments, No Avionics, Most of the Interior Has Been Removed and May Not Be All There, No Prop, Engine Will Sell Separate of Aircraft, Aircraft Had A Lyc O-360-A3A Engine

★★★ FUEL TRUCKS & VEHICLES ★★★



1979 Ford F600 Jet A Fuel Truck, V8 Engine, 4-Speed Transmission, 2,200 Gallon Stainless Steel Tank, Top & Bottom Load, Dual Pumps & Meters, (3) Reels, (2) Over Wing Nozzles, (1) Center Point Nozzle, Velcon Filters 300 GPM Flow Rate, Filters Replaced 6-14-2010.



GMC 6000 Jet A Fuel Truck, V8 Engine, 4x2 Transmission, 1,200 Gallon Stainless Steel Tank, Top & Bottom Load, Single Pump/Meter/Reel Mounted on Rear



1983 Ford F600 AV Gas Fuel Truck, V8 Engine, Automatic Transmission, 1,200 Gallon Stainless Steel Tank, Top & Bottom Load, Single Pump/Meter/Reel Mounted on Rear, Over Wing Nozzle Currently Being Used, Filters Changed 6-14-2010



1977 Ford F600 AV Gas Truck, V8 Engine, 4x2 Transmission, 1,200 Gallon Steel Tank, Top and Bottom Load, Single Pump/Meter/Reel Mounted on Rear, Pump and Meter Need Work.



1994 Mitsubishi FK457 Cab Over Flat Bed Truck, 5-Speed Transmission, A/C, 6-Cyl Turbo Diesel, 18 Ft Bed



1988 Hino FB Cab Over Flat Bed Truck, 5-Speed Transmission, A/C, 4 Cyl Turbo Diesel, 12 Ft Bed



1997 Chevy Silverado Ext Cab Pickup, Vortex 5.7L / V8 Engine, Automatic Transmission w/Overdrive, A/C, AM/FM/CD Radio, Power Windows & Door Locks



1978 GMC Sierra 1500 Pickup, Automatic Transmission, A/C, 305 CU. IN. V8 Engine



1978 Mercedes Benz 240D, 4-Door, Diesel Engine, 4-Speed, A/C, AM/FM Radio



1968 Ward LaFrance Fire Truck, 5-Speed Transmission, 1,000 GPM



Honda Super Sport Motorcycle
Yamaha 750 Wind Jammer SS Motorcycle



Tandem Axle Pull Type Trailer, 18 Ft Long, 7 Ft Wide, w/ Winch Mounted in Front
 (4) Antique Bicycles

ACCESSORIES

- (3) O/H Alternators P/N DOFF10300B, ALY-8520, 4111810
- (2) New Sky-Tec Starters C125T2/S, 159-12PM
- (3) New Starter Drives
- New Slick 6350 Magneto
- New Slick M6018 Ignition Harness
- New Bendix Mag Inventory
- MA4-5 Carburetor
- (5) O/H Vacuum Pumps
- (11) Starter Cores
- Bendix 756 Starter
- Right Angle Starter Drive
- (10) Alternator Cores
- (10) Magneto Cores
- (5) Generator Cores
- (8) Oil Coolers
- (3) Starter Ring Gear Cores
- (7) Vacuum Pump Cores
- Ignition Harness

OIL & CHEMICALS

- (10) Cases Phillips 20W-50 X/C Oil
- (16) Cases Phillips 20W-50 Mineral Oil
- 55 Gallon Drum of AeroShell 15W50 Aircraft Oil
- (2) Cases AeroShell 80 Oil
- Several Cases AeroShell Grease
- Several Cases of LPS Lubricant
- Magnaflux Dye Penetrate
- Misc Spray Paint, Lubricants, Chemicals

★ GROUND SUPPORT EQUIPMENT ★



Kubota Mdl. B9200HST-D Tug Tractor, 4 Cyl Diesel, Hydrostatic Shift, 4 Wheel Drive
Rhino Mdl. SE5 Brush Hog Mower, 3 Point
Rhino Mdl. RF60 Flail Mower, 4 Ft Wide



Kubota Mdl. L2650 Tractor, 3 Cyl. Diesel Engine, 3 Point Hitch, 1,071 Hours



North Western Type LP30 Aircraft Tug, 3 Cyl Propane Engine, 3,000 Lb DBP



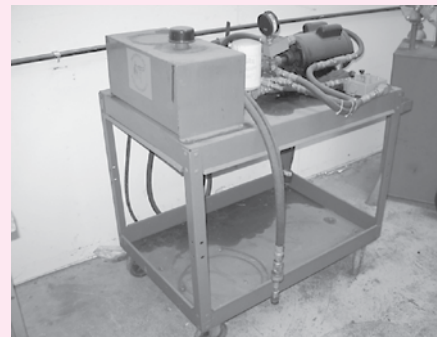
Clarkat Mdl. CK26F Aircraft Tug, 3 Speed, Flat Head 4 Cyl Engine, 2,000 lb DBP



Toyota 6,000 Lb Forklift, Triple Stage, 18 ft Mast, Rubber Tires, Propane, Side Shift Forks
Baker Mdl. FTD-030 Electric Forklift, 3,000 Lb, Dual Stage Mast, w/Charger, Needs Work
Lug-Bug Mdl. 1000 Aircraft Tug w/Briggs & Stratton Engine
Brackett Mdl. TR-12 Multi Link Flat Tire Dolly
(2) Brackett Aircraft Tow Bar
Joybar Tow Bar
Pallet Jack
Western Mdl. GC-30 Fuel / Defuel Cart, 30 Gal. w/Hand Pump
Misc Fuel Truck Parts To Include Single Point & Over Wing Nozzles, Grounding Wheels, Filters, Etc.



Super B II Aircraft Power Cart, 12 & 24 Volt, w/Charger



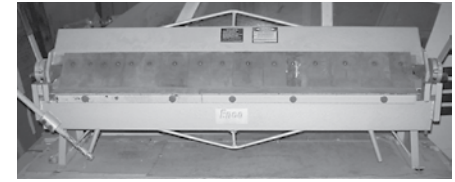
Burch Aircraft Equipment Mdl. 5606 Hydraulic Mule, 3,000 PSI

★★★ SHOP EQUIPMENT ★★★

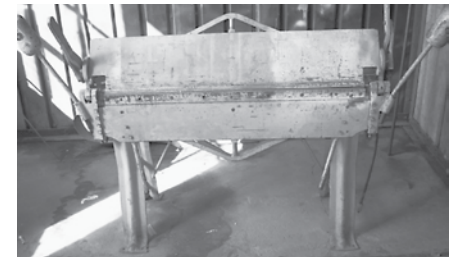
- (3) Tronair 30" Tripod Jacks - Mdl. 02-0530-0100 - 10,000 Lb Capacity
- (2) Ward Aero Low Wing Jack
- (2) Meyer Low Wing Jacks
- (2) Jackhouse 32" Aircraft Jack
- (2) High Wing Aircraft Jacks
- Beechcraft Jack
- Jackhouse 24" Aircraft Jack
- Meyer Tail Stand
- US Tool Hand Operated Sheet Metal Shrinker / Stretcher
- Metal Welding Table
- Misc Welding Rods, Incl. Aluminum & Stick
- JET Mdl. HVBS-461 Horizontal Band Saw
- Weigh-Systems Mdl. VC-210 Digital Aircraft Scale Set (3), 2,500 Lb Capacity Load Cells
- Champion Spark Plug Cleaner / Tester
- Ramco 5,000 Lb Engine Hoist
- Husky 2,000 Lb Engine Hoist
- MovinCool Mdl. 20HFU-1 Portable Air Conditioner
- 4-Bottle Upright Oxygen Cart w/ Gauge and Hoses
- Nitrogen Cart & Gauges
- CleanMaster Barrel Top Parts Washer
- Shauer 6 & 12 Volt Battery Charger/Starter
- (2) MCSI Mdl. MBC-6X 24 Volt Automatic Battery Chargers
- Wheel Bead Breaker
- Wheel Balancer
- Greenerd No. 2 Arbor Press
- (4) Engine Stands
- 3 Ton Floor Jack
- Bottle Jacks
- Magnaflux Mdl. ZB-100 Inspection Black Light
- (7) Various Kerosene Heaters
- ACMI Mdl. FCB95 Fiber Optic Light Supply
- Greenlee Hydraulic Hole Punch Kit Includes 2 1/2", 3", 3 1/2", 4"
- Aero Tools Mdl. V92 Cylinder Exhaust Port Face Grinder
- Baldor 2" Belt Sander
- 8" Bench Grinder
- (2) 10" Bench Vices
- Wilton 8" Bench Vice
- Machinist Vice
- Sioux 7" Electric Grinder
- ES Mdl. 700 Battery Tester
- 12 Volt Defueling Pump
- 55 Gallon Barrel Dolly
- 2-Door Fire Proof Cabinet
- Aircraft Jumper Cables
- 30" Pedestal Shop Fan
- Snap On and Misc Roll Around Mechanics Carts and Creepers
- (10) Metal Roll-A-Round Parts Carts
- Misc Extension Cords & Reels
- Misc Lifting Straps
- Roll Around Electrical Wire Roll Holder
- Various Air Hoses & Reels
- Various Shop Vacs
- New Piper Service Center Sign
- Shop Lights
- Kellogg Mdl. B335B Horizontal Air Compressor, 50 Gallon Tank, 5 HP, Single Phase, Dual Stage
- Air Compressor Storage Tank
- Horizontal Air Compressor, 5 HP, Single Phase, Dual Stage



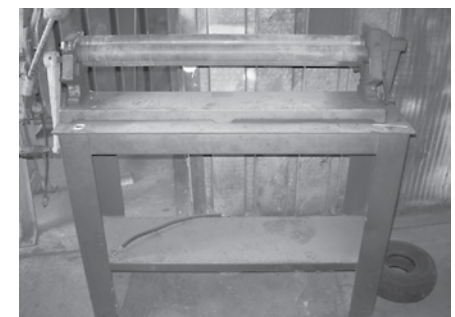
National Mdl. 5216 52" Sheet Metal Shear, 16 Gauge Mild Steel



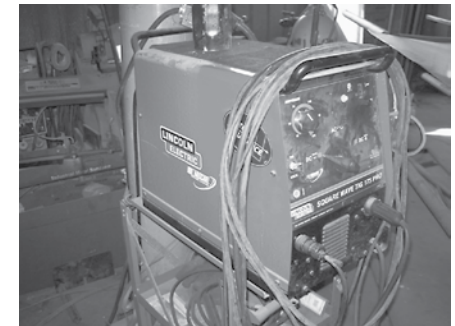
Enco 48" Box & Pan Brake, 16 Gauge Mild Steel



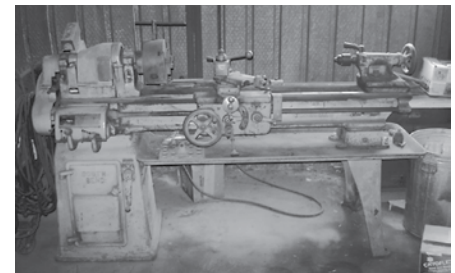
Chicago 48" Sheet Metal Brake



National 36" Sheet Metal Roller

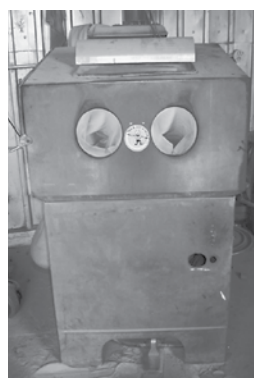


Lincoln Square Wave TIG175 Pro Tig/Stick Welder w/ Argon Attachment



Southbend Mdl. CL145C Metal Lathe, 6ft Bed, 12" Swing, 38" Between Centers, w/Taper Attachment

Zero Mdl. B-300-I Bead Blast Cabinet, w/ Reclaimer & Filter Bag



Powermatic Mdl. 1150A Variable Speed Floor Model Drill Press, 260-4500 RPM Spindle Speed

Craftsman 13" 5-Speed Floor Model Drill Press



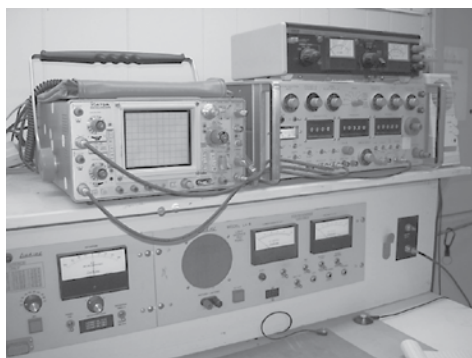
Ramco 50 Ton Hydraulic H-Frame Press

16" Variable Speed Floor Model Drill Press

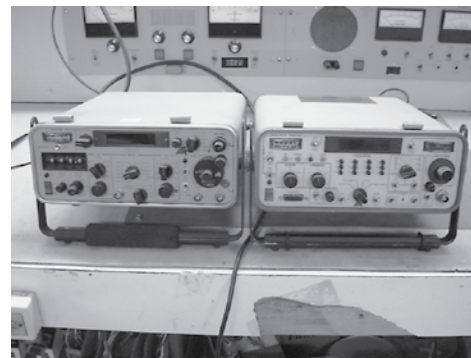


Ramco Mdl. RS-90P Industrial Horizontal Band Saw

★★ AVIONICS TEST EQUIPMENT ★★



IFR Mdl. ATC-1200Y3 Transponder / DME Simulator
Barfield Mdl. SC 063 Master Compass
TIC Mdl. CES-116A ADF Signal Simulator
HP Mdl. 606B Signal Generator
II Morrow Mdl. A22 Loran C Signal Generator
Lambda Mdl. LXD-D-152R DC Power Supply
Lambda Mdl. LM237 DC Power Supply
BK Precision Mdl. 1601 DC Power Supply
Electro Mdl. EFB DC Power Supply
Fluke Mdl. 45 Dual Display Multimeter
(2) Simpson Mdl. 370 Digital Milliammeter
Thurline Mdl. 43 Wattmeter
Tektronix Mdl. 475A Oscilloscope
(2) Setra Mdl. 370 Digital Pressure Gauge
Mura Mdl. CBM-30 Antenna Meter
EF Johnson Mdl. 250-849 Antenna Meter



IFR Mdl. ATC-600A Transponder / DME Ramp Tester
IFR Mdl. NAV-401L NAV / COMM / ILS / Marker Bench and Ramp Test Set
LinAire Mdl. LG5 Glide Slope Test & Control Panel
LinAire Mdl. LA6 Light NAV / COM Test Panel
Bill Johnson Mdl. 6000-35 Pitot Static Test Set
Michel Mdl. 2200A NAV / COM Ramp Test Set
JC Air P/N 01-0332-00 Transponder Ramp Tester
3M Mdl. WX-PA Stormscope Portable Analyzer
3M P/N 78-8060-5869-5 Stormscope Test Receiver
3M P/N 78-8060-5744-0 Stormscope Test Antenna
3M P/N 78-8060-5868-7 Stormscope Test Antenna
Mitchell Mdl. 66D141 Auto Pilot Test Set
S-Tec P/N 9524 Breakout Box
(40+) Assorted King, ARC, Collins and Misc Test Harness'

★ HAND TOOLS ★

- Sioux Mdl. 1695-S Angle Head Valve Seat Driver Set
- (2) Differential Pressure Testers
- Shimpo Mdl. DT-206 Tachometer Tester
- Eastern Cable Tester
- Eastern Timing Indicator
- Magneto Synchronizer
- Starrett Micrometers Including 12" to 18", 18" to 24", 30" to 36", 36" to 42"
- Starrett Depth Gauge
- Misc Cylinder Base Wrenches
- Misc. Expandable and Ball Hones
- Brake Bleeder Pot
- Oxygen / Acetylene Torch Set
- (2) Cable Tension Tester
- Belt Tension Gauge
- AMP Cable Swagger
- (2) Sutton Mdl. 3A100 Propeller Balancers
- Adjustable Reamer Set
- Pneumatic Rivet Guns
- Pneumatic Right Angle Ratchet
- Pneumatic Die Grinder
- Pneumatic Blind Rivet Puller
- Pneumatic Rivet Puller
- Hand Rivet Puller
- Hand Rivet Squeezer
- USA Rivet Dimpler w/Misc Heads
- Rivet Cutters
- Nicro Press Tool
- BF Goodrich Cold Patch Repair Kit
- Tap & Die Set
- Helicoil Kit
- Assorted Crimpers and Wire Strippers
- Greenlee 3 1/8" & 2 1/4" Chassis Punches
- Hakko Mdl. 936 Soldering Station
- Black & Decker Hand Held Electric Shear
- Black & Decker Hammer Drill
- Black & Decker Circular Saw
- Black & Decker Jigsaw
- Drill Bit Sharpener
- (2) Heat Guns
- Hole Saws
- Pipe Threader
- 36" Aluminum Pipe Wrench
- Rockwell Handheld Buffer
- Skill Mdl. 3370 4" Belt & 6" Disc Sander
- Tube Flaring Tool
- Tubing Bending Kit

★★★ ENGINES ★★★

Lyc. 0-360-A4A Engine Core, Approx. 2,000 Hrs. S.M.O.H., Normal Pull Off
Lyc. 0-320-E2D Engine Core, 2,665 Hrs. T.T., Normal Pull Off
Lyc. 10-540-K1G5D Disassembled Engine Core, Normal Pull Off, No Accessories
Lyc. 0-235-L2C Engine Core
Cont. 0-200-A Engine Core 1,869 Hrs. S.M.O.H.
Franklin Mdl. 6A4-165 6-Cyl. Engine Core

★★★ CYLINDERS ★★★

O/H 10-320 Cyl.
(5) Lyc. 0-320 Cyl. Cores
(6) Lyc. 0-360/0-540 Cyl. Cores
(6) Lyc. 0-540 Cyl. Cores w/Valves

(2) Lyc. 0-235 Cyl. Cores
(2) 10-550 Cyl. Cores
(11) Cont. 0-520 Cyl. Cores
(18) Cont. 65/85/0-200 Cyl. Cores
Cont. 0-360 Cyl. Cores

★ CESSNA, PIPER ★ & MISC. INVENTORY

Note: This Inventory Includes New & As Removed

New LP Plastics Cessna 150/152 Windshield
Cessna 152 Nose Gear
(2) Cessna 150 Nose Gear Forks
Cessna Nose Gear Scissors
Cessna Shimmy Dampers
Cessna & Piper Wheel Pants
Various Spinners and Backing Plates
Misc AR Cowling, Wingtips, and Control Surface Tips
Cessna 150/152 Airbox
Pair Cessna Doors
Push / Pull Cables
New Cessna Inventory to Include Plugs, Bushings, Clips, Seat Track, Doublers, Handles, O-Rings, Wing Root Vents, Door Seals, Etc.
New Piper PA-28 Side Window
New PA-32 / PA-34 Side Window
(3) O/H Piper Retract Assy P/N SFA232-5
Piper Aztec Flap
New Piper Inventory to Include Rod Ends, Bushings, Seals, Elbows, Cowling Fasteners, Etc.
Cherokee Nose Gear
New Wheel & Brake Inventory Including Cleveland Brake Discs and Pads, Timken Bearings and Races
(8) 6" Wheels and Halves
(6) New Tires to Include 7.00-6, 6.00-6, 5.00-5
(6) Various New Tire Tubes
(33) New Champion Oil Filters to Include CH48103-1, CH48104-1, CH48108-2, CH48109-1, CH48111-1
New Spark Plugs to Include REM38E, RHB37E, REM40E, RHB32S, REM37B, REM38S
(27) New Brackett Air Filters
(8) New Lord and Barry Mounts
Aircraft Hardware Including: Cotter Pins, Nuts, Bolts, Nut Plates, Screws, Clamps, Washers, DZUS Fasteners, Clevis Screws, Nylon Nuts, Pal Nuts, Tinnerman Nuts, Etc.
New Solid Rivets and Cherry Rivets
(4) New O-235 Pistons
New Cont & Lyc Gaskets and Seals
A/R Engine Inventory Including Pistons, Valves, Rocker Arms, Bushings, Etc.
Beech Single Throw Yoke
Misc Exhaust and Mufflers
(5) Parachute Packs

★ ★ PROPELLERS ★ ★

Hartzell Constant Speed Prop Core for Baron
McCaughey 3-Blade Mooney Prop, Damaged

★ ★ ★ AVIONICS ★ ★ ★

King KT-75 Transponder
King KT-76A Transponder
(2) King KX-155A NAV / COM's
(5) King KX-155 NAV / COM's
King KT-76 Transponder
King KT-79 Transponder
(2) King KT-78 Transponder
King KX-175B NAV / COM
King KMA-24 Audio Panel
King KN-64 DME
King KR-87 ADF Receiver
King KNS 80 NAV System
(2) New Narco AT-165 Transponder
New ACK Mdl. E-01 ELT
New Ameri-King AK-350 Altitude Encoder
New Apollo GPS/NAV Annunciator Control Unit
(3) New GA-56 GPS Antenna Kits
WX-8 Stormscope
(2) Narco AT-150 Transponder
(2) Narco AT-50 Transponder
(2) Narco 810 COM
Apollo SL40 VHF COM
(3) King KA-44B ADF Antennas
King KA-42B ADF Antenna
Various Antennas
Various Lorans
Mitchell AutoPilot System for Piper Cherokee
Misc Mitchell Autopilot Servos
(5) David Clark and Misc Head Sets
Several Radio Racks
Avionics Repair Inventory to Include Resistors, Fuses, Switches, Connectors, Fans, Etc.

★ ★ INSTRUMENTS ★ ★

(5) New & O/H Tachometers
(13) O/H Instruments to Include Airspeed, 3-In-1 Engine, Oil Temp, VSI, Altimeter, Manifold Pressure, Compass
O/H Encoding Altimeter P/N 42540-2114
O/H Vertical Card Compass
New Electric Clock
King KI-209 Ind.
(4) King KI-208 Ind.
(3) King KI-203 Ind.
King KI-201 Ind.
Shadin AMS-2000 Altimeter
(58) Instrument Cores to Include Altimeters, Turn Coordinators, Tachometers, Airspeed, EGT, Manifold Pressure, Compass, Etc.
(3) Directional & Attitude Gyros
(40+) Collins Course, NAV, and ADF Ind.

★ ELECTRICAL ★ ★ ★ INVENTORY ★ ★

KGS SPS-306 Static Inverter
Marathon PC-50-2B Static Inverter
(2) New Batteries RG-35AXC
(24) New Sealed Beams
(7) New Voltage Regulators
Voltage Regulators
New Electrical Inventory to Include Miniature Bulbs, Fuses, Switches, Heat Shrink Tubing, Etc.
Various Rolls of Aircraft Electrical Wire

★ ★ ★ MANUALS ★ ★ ★

(130+) Bendix / King Avionics Maintenance / Parts Manuals to Include KFC200, KFC250, KRA405, KRA10, KTR900A, KDF806 and Several Others
(24) Collins Avionics Maintenance Manuals to Include VHF 251, ALT-50, Etc.
(28) S-Tec & Century Auto Pilot Maintenance Manuals to Include Models 55, 55X, 60-1, 60-2, Etc.
(33) Narco Avionics Maintenance Manuals to Include DME 880, NAV 21, NAV/COM 100, HIS 100, ADF 841, Etc.
(40) Cessna Avionics Manuals to Include 400 Series, Navomatic, 300 NAV/COM, Etc.
(39) Various Avionics Overhaul and Parts Manuals
(70) Cessna Maintenance and Parts Manuals to Include 172, 188, 206, 210, 310, 336, 402, 421, Etc.
(44) Piper Maintenance and Parts Manuals to Include PA-46, PA-28, PA-20, PA-36, PA-34, PA-24
(34) Beechcraft Maintenance and Parts Manuals to Include Bonanza, Queen Air, King Air 90, Baron, Etc.
(12) Mooney Parts and Service Manuals
(31) Continental & Lycoming Parts and Overhaul Manuals
Avionics Microfiche Library to Include Bendix Category 1, 1A, 1B, 2, 2A; Collins; King Silver Crown Cat I, VIII; Narco NAV/COM
Cessna, Piper, Beech, Continental and Lycoming Microfiche Libraries
Realist Mdl. C-1411 Microfiche Reader



AUCTIONEER'S NOTE: Clay Smith, Owner of Decatur-Athens Aero Services is deceased. His family has therefore contracted with Starman Bros. Auctions, Inc. to liquidate all assets of the company. This auction offers a good selection of Flying Aircraft, Shop Equipment, Tools, Etc. Because this was a 'Full Service' F.B.O., there is also a good selection of Inventory, Fuel Trucks, Vehicles, Engine Cores, Avionics Test Equipment, Etc.

Everything sells "AS IS, WHERE IS" with no warranties implied or expressed. Neither the auctioneer nor owners shall be liable for any incorrect description, fault, or defect. Everything positively sells to the highest bidder. Payment must be made in full day of sale. No property removed until settled for. Auctioneer is not responsible for accidents or stolen property. All counts are approximate. Announcements made day of sale takes precedence over all printed material.

PAYMENT TERMS: Cash, Certified Funds, or Company Check ONLY if accompanied by Bank Letter of Guarantee!! NO EXCEPTIONS! Wire Transfers will be accepted with a 20% non-refundable deposit day of sale in one of the forms listed above. We also accept MasterCard and Visa with an additional 3% Buyers Premium applicable.

FLYING AIRCRAFT TERMS: Must Be Cash, or Certified Funds. A company check will be accepted ONLY with an IRREVOCABLE Letter of Credit From Your Bank. If a wire Transfer or bank Draft is used we need a 20% NON-REFUNDABLE DEPOSIT Day of Sale via one of the above mentioned forms.

PROXY BIDS: If you are unable to attend this auction we will bid on your behalf. For more info visit our web site at www.starmanauctions.com and click on Upcoming Auctions and scroll down to the Proxy Bid Section. Complete form and fax to (402) 592-2327 or call Steve at (402) 681-6456.

LOADING & REMOVAL: Once an item is sold the winning bidder is responsible for its removal. Any cost responsibility and risk of removal of purchases remain with the buyer. Removal may begin after payment in full and must be completed by the posted deadlines. NO EXCEPTIONS OR EXTENSIONS! There may be various trucking companies on site to arrange for transportation. However, it will be the buyer's responsibility to arrange their own trucking.

★ BENCHES, DESKS ★ ★ ★ & SHELVING ★ ★

Snap Together Rivet Racking
Various Sections of 12" & 18" Metal Shelves
6' and 8' Shop Benches with Metal and Wood Tops
Oak Double Pedestal Desk w/Matching Credenza
Metal Double Pedestal Desk w/Matching Credenza
Double Pedestal Metal Desk w/Laminate Top
(3) Double Pedestal Wood Desk
L Shape Metal Computer Desk
(3) Metal Book Shelves
(2) 5-Drawer File Cabinets
(6) 4-Drawer File Cabinets
(3) 2-Drawer File Cabinets
Glass Display Case
Misc Reception Area Furniture
Large Office Safe
Refrigerator / Freezer
Lunch Room Tables & Benches

★ ★ ★ PRINTERS ★ ★ ★

Panasonic FP-D250 Copier
HP Color Laserjet 3600N
Deskjet 648C Printer
Brother P-Touch Label Maker

STARMAN BROS.
AUCTIONS INC.

1240 Royal Drive ■ Papillion, NE 68046
(402) 592-1933 ■ FAX (402) 592-2327
www.starmanauctions.com

STARMAN BROS.
AIRLINE SERVICES, INC.

www.starmanauctions.com