

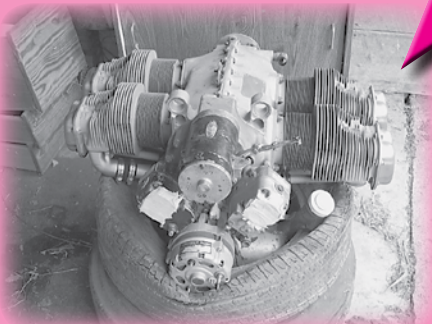
# AVIATION AUCTION

**SATURDAY ~ OCTOBER 1<sup>st</sup>, 2011**  
*Starting at 11:00 A.M.*

## **ESTATE OF ROY PANKRATZ**

**43442 180<sup>th</sup> ~ SPRINGFIELD, MINNESOTA**

**Directions:** From East Side of Springfield, MN go East on Highway 14 Approx. 3.4 Miles to CR-16 Turn Left (North) go 3.3 Miles to 180<sup>th</sup> Street/CR-60 Turn Left (West) Go 1/2 Mile to Sale Site on Left. Watch For Signs!!



**ABSOLUTE AUCTION!!!**

**SALE SITE PHONE:** Steve Starman (402) 681-6456 or Scott Moore (402) 681-3652

### **MOTEL**

Microtel Inn & Suites  
502 East Rock Street  
Springfield, MN  
(507) 723-8200

**OPEN HOUSE: Friday, September 30th**  
**9:00 A.M. to 5:00 P.M.**

**AIRLINE CONNECTIONS:** The closest Commercial Airports are Sioux Falls, SD, and Minneapolis, MN. Both are Approx. 100 Mile Drive. Local Airports Include Springfield (Identifier D42) Runway 3,400' Unattended Airport, New Ulm (Identifier ULM) 4,400' Runway Approx. 22 Miles East, and Mankato (Identifier MKT) 6,600' Runway Approx. 50 Miles East. If you are flying into Springfield and would like to be picked up you must call one day in advance. Call Steve Starman (402) 681-6456.

**STAR MAN BROS. AUCTIONS INC.**

1240 Royal Drive ~ Papillion, NE 68046 ~ 4901 E Falcon Drive ~ Mesa, AZ 85215  
(402) 592-1933 ~ (480) 396-0380

## ★★★ Flyable Aircraft ★★★



**1967 Piper PA-235C Pawnee**  
**N-4586Y S/N 25-4264**  
**3,636 Hrs. Total Time**  
**Engine: Lyc O-540-B2C5, 1,236 Hrs. S.M.O.H.**  
**Last Annual Done 5/20/2008, Ultrasonic Inspection to Comply with AD95-12-01 Done 10/1997, Installed STC Solution Wing Attach Reinforcements Kit Per STC# 5A01154 on 10/21/1997, Fuselage & Rudder Recovered with Stits on 12/28/1990, Wings & Other Surfaces Done with Ceconite on 7/10/1985, Has Auto Flagger, Smoker, 150 Gallon Hopper. Has All Log Books.**



**1948 Aeronca 7DC Champ**  
**N-90433 S/N 7DC-118**  
**3,100 Hrs. Total Time**  
**Engine: Cont C-85-8, 1,731 Hrs. S.M.O.H.**  
**Last Annual Done January 2001. Has All Log Books.**



**1956 Piper PA-22-150 Tri Pacer**  
**N-2414F S/N 22-4190**  
**2,653 Hrs. Total Time**  
**Engine: Lyc O-320**  
**Note: The last Airframe & Engine Logs are missing. There has been 315 Hrs. put on the Aircraft during that time. In June 2002, the Aircraft went through Certification and there are several 337's available for that process. Also, the Last Annual was Done August 10, 2010 and all Work Orders are Available. Between the 337's and Annual Work Orders, the Times can be substantiated.**

**1974 Aeronca 11AC**  
**N-3763E S/N 11AC-S-6**  
**2,667 Hrs. Total Time**  
**Engine: Cont A-65-8, 96 Hrs. S.M.O.H.**  
**Last Annual Done 11/15/1998, Aircraft was Totally Rebuilt in Sept 1978, Frame Tubing was Blasted & Primered, All Wood Replaced, All Fabric Replaced with Ceconite 101 Fabric, Several New Parts Replaced at That Time. Including Auxiliary 5.5 Gallon Tank installed in Right Wing, Large Dorsal Fin Kit, Goodyear, Disc Brakes Installed May 1980. Has Log Books.**

## ★★★ Project Aircraft ★★★



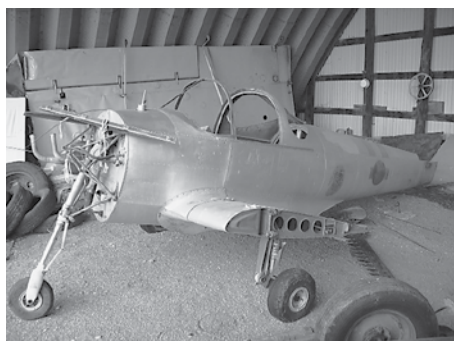
**1947 Piper PA-12 Cruiser Project**  
**N-3311M S/N 12-2170**  
**3,624 Hrs. Total Time**  
**The Wings & Tail Feathers are off from the Aircraft at this time. Aircraft is Complete less the Engine**

**and should make an easy rebuilder for someone. There will be a Lyc O-235-C Engine Core Sold at this Auction. Has All Log Books.**



**Luscombe 8A Project**  
**N-23063 S/N 987**  
**Engine: Cont A-65-8F**  
**This Aircraft appears to be Complete to include the Instruments. The Wings & Control Surfaces are taken off because the**

**Aircraft was hauled in. We have been unable to locate or find any of the Log Books at this time; however, we are continuing to look. If you would like to know if we have found them before you travel please call ahead.**



**Snow Mdl 60020 Ag Aircraft**  
**N-1853S S/N 1103C**  
**This Aircraft is Complete on the Gear, Wings have been Removed and Both have Outboard Damage. There are No Log Books and No Engine or Prop. This Aircraft will be Sold for Parts and/or Salvage Only.**

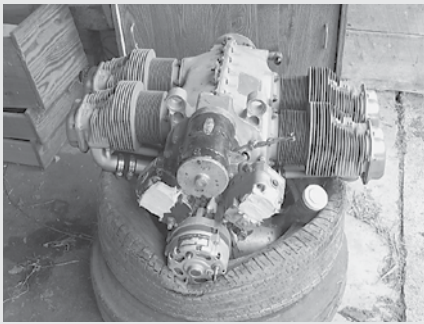


**Piper PA-25-260 Pawnee Project**  
**N-8573L S/N 25-4998**  
**4,131 Hrs. Total Time**  
**Engine: Lyc O-540-G1A5, 0 Hrs. S.M.O.H.**  
**The Wings are off from the Aircraft at this time because they have just been Rebuilt & Recovered. Engine is on the Aircraft in the Mount but will require some of the Accessories to be put on. Has All Log Books.**

**Ercoupe 415G Project**  
**N-94427 S/N 5073**  
**1,826 Hrs. Total Time**  
**This Aircraft has been completely disassembled and will need to be totally rebuilt and put back together. Most everything appears to be here. Has All Logs. The Cont O-200-A Engine that came off from this Aircraft and was zero timed will be sold separate.**



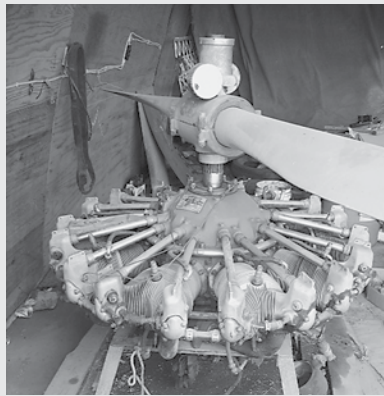
## ★ ★ ★ Engine Inventory ★ ★ ★



Cont O-200-A Engine, 0 Hrs. S.M.O.H.



Lyc O-235-C Engine Core



P&W R-985-AN14B Engine Core, Normal Run Out

## Vehicles & Boat

2002 Buick Park Avenue, 4-Door, 3.8 Liter V-6 Engine, Auto Transmission w/OD, A/C, Power Windows, Locks & Seats, AM/FM/CD



2003 Ford Ranger Pickup, 2.3 Liter 4 Cyl Engine, 5-Speed Manual Transmission, A/C, AM/FM



1995 Ford Ranger XLT Pickup, 2.8 Liter 8 Cyl Engine, 4-Speed w/OD Manual Transmission, AM/FM



(2) 18' Tandem Axle Trailers, Bumper Hitch, (1) Nearly New



1950's Vintage Chevrolet 4100 Flatbed Truck, 6 Cyl Engine, 4-Speed Transmission

## ★ ★ ★ Accessories, Skis & Misc. Aircraft Inventory ★ ★ ★

NAY-9E Carburetor Core  
 Jasco Alternator Core  
 (5) American Bosh SB9RU & Bendix Magneto Cores  
 Bendix Eclipse R-985 Starter  
 P&W R-985 Exhaust  
 Hamilton Standard 12D-40 Prop Core  
 (1) Pair of Federal A-1500A Skis  
 (1) Pair of Federal A-1500 Skis  
 (1) Pair of Federal SC-1 Skis  
 Cessna 170B R/H Wing, Little Damage  
 Misc. Wheels  
 Thrush SR-2 Horizontal Stabilizer, Elevators, Vertical Fin, Rudder & Engine Mount  
 Air Tractor Elevator  
 Pawnee Spreader  
 Various Spray Pumps, Valves, Etc.  
 Loading Pumps & Motors, Mix Tank  
 Various Other Aircraft Parts



Alumacraft V-16 Aluminum Fishing Boat w/ Johnson 6 HP Outboard Motor & Shorelander Trailer



Aluminum Row Boat

## ★ ★ ★ Tractors & Farm Equipment ★ ★ ★



John Deere A Tractor w/John Deere 45 W Loader, Narrow Front End

1,200 Gallon Poly Tank



Cockshutt 560 Tractor, Perkins Diesel Engine (Recently gone through), Wide Front End, 3,488 Hrs.

Allis Chalmers WD Tractor, Narrow Front End, 2-Pt Hitch

Flair Box Wagon



Clark Spra-Coupe Mdl Melroe 115 3-Wheel Ground Spray Rig, 150 Gallon Tank, VW Engine

PTO Driven Rear Mount Snow Plow for WD Tractor

Pull Type Sickle Mower, 7' Bar

Woods L-306 Belly Mower

**AUCTIONEER'S NOTE:** Roy Pankratz has passed away and the Executor of his Estate has contracted with Starman Bros. Auctions to Liquidate at Public Auction all of his Aircraft and some Miscellaneous Farm Equipment and Vehicles. This Auction has some Good Flyable Aircraft and Aircraft Projects. Even though some of them have not flown in a few years, they have been started and run from time to time.

Everything sells "AS IS, WHERE IS" with no warranties implied or expressed. Neither the auctioneer nor owners shall be liable for any incorrect description, fault, or defect. Everything positively sells to the highest bidder. Payment must be made in full day of sale. No property removed until settled for. Auctioneer is not responsible for accidents or stolen property. All counts are approximate. Announcements made day of sale takes precedence over all printed material.

**PAYMENT TERMS:** Cash, Certified Funds, or Company Check ONLY if accompanied by Bank Letter of Guarantee!! NO EXCEPTIONS! Wire Transfers will be accepted with a 20% non-refundable deposit day of sale in one of the forms listed above. We also accept MasterCard and Visa with an additional 3% Buyers Premium applicable.

**STARMAN BROS. AUCTIONS INC.**

1240 Royal Drive • Papillion, NE 68046  
(402) 592-1933  
www.starmanauctions.com

Return Service Requested

PRSR FIRST CLASS  
U.S. POSTAGE  
**PAID**  
MAIL U.S.A.

*First Class*

**FLYING AIRCRAFT TERMS:** Must Be Cash, or Certified Funds. A company check will be accepted ONLY with an IRREVOCABLE Letter of Credit From Your Bank. If a wire Transfer or bank Draft is used we need a 20% NON-REFUNDABLE DEPOSIT Day of Sale via one of the above mentioned forms.

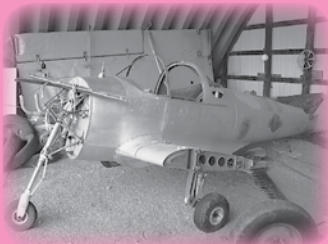
**PROXY BIDS:** If you are unable to attend this auction we will bid on your behalf. For more info visit our web site at www.starmanauctions.com and click on Upcoming Auctions and scroll down to the Proxy Bid Section. Complete form and fax to (402) 592-2327 or call Steve at (402) 681-6456.

**LOADING & REMOVAL:** Once an item is sold the winning bidder is responsible for its removal. Any cost responsibility and risk of removal of purchases remain with the buyer. Removal may begin after payment in full and must be completed by the posted deadlines. NO EXCEPTIONS OR EXTENSIONS! There may be various trucking companies on site to arrange for transportation. However, it will be the buyer's responsibility to arrange their own trucking.



**SATURDAY ~ OCTOBER 1<sup>st</sup>, 2011**  
Starting at 11:00 A.M.

**ESTATE OF ROY PANKRATZ**  
43442 180<sup>th</sup> ~ SPRINGFIELD, MINNESOTA



**STARMAN BROS. AUCTIONS INC.**

1240 Royal Drive ~ Papillion, NE 68046 ~ 4901 E Falcon Drive ~ Mesa, AZ 85215  
(402) 592-1933 ~ (480) 396-0380