

AVIATION AUCTION

**SATURDAY
SEPTEMBER 15, 2007**
Starting at 9:30 A.M.

Grayson Flying Service

By Order of Secured Creditors
5318 Airport Dr. - Grayson County Airport
Sherman, Texas

Directions: From Hiway 82 on West side of Sherman take Exit 640 (Hiway 1416) and go North to Hiway 691, turn Left or West approx. one mile into airport. Hangar is on the South side of Airport.

ABSOLUTE AUCTION

Sale Site Phone: Call Starman Bros. Auctions
402-592-1933 or Scott Moore 402-681-3652



PRSR FIRST CLASS
U.S. POSTAGE
PAID
MAIL U.S.A.
First Class

Airline Connections

Most all major airlines into Dallas-Fort Worth Airport (DFW). Private aircraft can land at Grayson County Airport, Sherman, Texas.

HOTELS

Holiday Inn Express
2909 Michelle Drive
Sherman, Texas
903- 892-3300

Comfort Suites
2900 U.S. Hwy. 75 North
Sherman, Texas
903-893-0499

Hampton Inn
2904 Michelle Drive
Sherman, Texas
903- 893-9333

LaQuinta Inn
2912 U.S. Hwy. 75 North
Sherman, Texas
903-870-1122

STARMAN BROS.
AUCTIONS INC.

1240 Royal Drive • Papillion, NE 68046-2082
(402) 592-1933

Return Service Requested

STARMAN BROS.
AUCTIONS INC.

1240 Royal Drive • Papillion, NE 68046-2082
(402) 592-1933

STARMAN BROS.
AIRLINE SERVICES, INC.

9000 NW 15TH STREET • MIAMI, FL 33172
(305) 477-6865

FLYING AIRCRAFT



1976 Cessna 402B
N-49JB S/N 402B-1040
Total Time: 4821 Hrs.
Engines: Cont. TS10-520-E's
L/H Engine: 677 Hrs. S.M.O.H.
R/H Engine: 1,207 Hrs. S.M.O.H.
Avionics: King Gold Crown Package
(3 Ea.) King Coms
Dual King Navs
Collins P/N 101 HSI
King KT-76A Transponder
King KT-76 Transponder
King DME
Arnav R-21 Loran
King Swithing Panel w/3 Lite
400B Auto Pilot System
Aircraft has Cargo Door, Full Delce, Hot
Props, Fresh Annual, Paint & Interior are
a 4, Original Logs.



1978 Cessna 210 M Centurion
N-6212B S/N 21062709
Total Time: 7,136 Hrs.
Engine: Cont. IO-520-L 445 Hrs. S.M.O.H.
Avionics: ARC Switching Panel w/3 Lite
Marker
Dual RT-385A Nav Coms
ARC RT-359A Transponder
King KN-64 DME
King KR-87 ADF
Apollo 618 Loran
Cessna 400B Auto Pilot System
Flight Com 403 Intercom
Prop: McCauley 3 Blade/Mdl. D3A39C404C
2 Hrs. S.M.O.H.
Uvalde Gear Door Mod, Electric Trim, Pitot/
Transponder Due 1/09
Annual Done 1/22/07, All Original Log Books



1981 Cessna 172 P
N-52299 S/N 172-74490
Total Time: 7,799 Hrs.
Engine: Lyc. 0-320-D2J 288 Hrs. S.M.O.H.
Avionics: ARC Switching Panel w/3 Lite
Marker
Dual ARC RT-385A Nav Coms
ARC RT-359A Transponder
ARC - 300 ADF
King KN-64 DME
Flight Com Intercom
All Original Logs, Fresh Annual



1981 Cessna 152 II
N-5183P S/N 152-84890
Total Time: 9,028 Hrs.
Engine: 600 Hrs. S.M.O.H. by D&B 10/3/00
Avionics: Switching Panel
King KT-76A Transponder
RT-385A Nav Com
David Clark Intercom
All Original Log Books, Fresh Annual



1979 Cessna 152 II
N-68711 S/N 152-82327
Total Time: 10,484 Hrs.
Engine: Lyc. 0-235-L2C, 2,113 Hrs. S.M.O.H.
Avionics: Switching Panel
ARC RT-385A Nav Com
ARC RT-359A Transponder
Sigtronics Intercom
All Original Logs, Fresh Annual



1972 Cessna 150 Aerobat
N-1970M S/N A150-030
Total Time: 4,191 Hrs.
Engine: 89 Hrs. S.M.O.H.
Avionics: ARC 300 Nav Com
ARC RT-308C Transponder
All Original Logs, Fresh Annual

FLYING AIRCRAFT: TERMS: Must be Cash, or Certified Funds. A company check will be accepted ONLY with an IRREVOCABLE Letter of Credit from your bank. If a Wire Transfer or Bank Draft is used we need a 20% NON-REFUNDABLE DEPOSIT Day of Sale via one of the above mentioned forms.

VEHICLES



**1987 Lincoln Limousine, 5.0 Liter V-8, Auto
Trans., Power Window, Locks, Air, Cruise
Control**



**1972 Ford Chateau Club Wagon Van, V-8,
Auto Trans., 9 Passenger**



**1985 Chrysler Fifth Ave., 5.2 Liter V-8, Auto
Trans., Power Windows, Door Locks, Seats,
Car Needs Work, Sold For Parts**
**1982 Cadillac Eldorado, 4.1 V-8, Auto Trans.,
Power Windows, Door Locks, Seats, Car
Needs Work, Sold For Parts**

E-Z Go 6 Passenger Golf Cart, Will Need Some Work

LANDING GEAR, WHEEL & BRAKE INV.

Merlin II Main Gear Pistons & Axles, C-172 Nose Fork & Barrell,
Merlin II Brakes As Removed, Multi Disc Brake Cores 6", 8" &
10" Wheels & Wheel Halfs, Aero Star Landing Gear Links, New
Cleveland Brake Discs, Good Selection of New Cleveland, Good-
year Brake Linings & Pucks, New Timken Wheel Bearings, Misc.
New Brake Inv., (3 ea.) 10" Wheel & Tire Assys. As Removed

NEW CESSNA INVENTORY

New C-210 Nose Gear Casting P/N 1243403-2 Flight Control Cables,
C-310 Gear Door Hinges, Bearings, Spinner Bulkheads, Bushings,
Roll Pins, Shimmy Damper Housings, Misc. Ribs, Cabin Door Inv. &
Hinges, Aileron Hinges, Stall Warning Horns, Springs, Shims, Vert.
Stab Fittings, Park Brake Inv., Placards, Decals, Retainers, Strut Seal
Kits, Misc. Brackets, Misc. Electrical, Micro Switches, Strobe Power
Supplies, Starter Solenoids, Etc.

NEW & RECAP TIRES & TUBES

Approx. 16 New & Recap Tires, Sizes Include 6:50 x 8, 6:50 x 10, 19.5
x 6.75, 22 x 6.75, 18 x 4.4, Misc. New Inter Tubes

NEW ELECTRICAL INV.

Voltage Regulators, Over Voltage Sensors, Starter Vibrators,
Starter Solenoids, Switches, Micro Switches, Whelen Strobes,
Strobe Flash Tubes, Grmc Light Bulbs, Sealed Beams, Large
Selection of Miniature Bulbs, Cannon Plugs, Anti Collision Light,
Lenses, Etc.

MUFFLERS & EXHAUST

Complete Overhauled Exhaust System for a Turbo C-182, Various
As Removed Mufflers, & Exhaust Pipes Including Turbo Exhaust

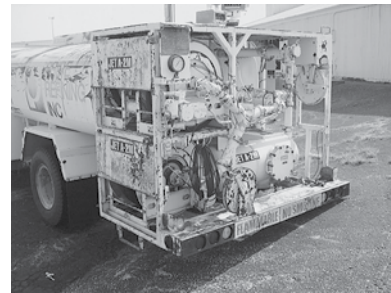
STARMAN BROS.
AUCTIONS INC.

1240 Royal Drive ■ Papillion, NE 68046-2082
(402) 592-1933

STARMAN BROS.
AIRLINE SERVICES, INC.

9000 NW 15TH STREET ■ MIAMI, FL 33172
(305) 477-6865

FUEL TRUCKS



**Ford 8000 Jet A Fuel Truck, 3,000 Gal. Steel
Coated Tank, Two Nozzles, One Single
Point Nozzle, Two Meters & Pumps, 300
GPM Flow Rate Filters, Bottom & Top Load,
Fuel & Defuel Capabilities, Truck has V-8
Engine & 5 Speed Trans.**



**Ford F-600 Av Gas Truck, V-8, 5 Speed Trans.,
900 Gal. Tank, Steel Coated, Bottom & Top
Load, Fuel & Defuel Capable Single Pump,
Meter & Reel 100 GPM Flow Rate**



**Ford F-600 Av Gas Truck, V-8, 5 Speed Trans-
mission, 1,200 Gal. Steel Coated Tank,
Dual Meters, Pumps & Reels, Filters Leak
& Need to be Fixed, Bottom & Top Load,
Fuel & Defuel Capable**



**IH Loadstar 1700 Jet A Truck, 1,500 Gal. Alu-
minum Tank, Engine in Truck is Froze Up,
Top & Bottom Load, Dual Pump Meter &
Reels (Need Some Work)**
**Ford Low Profil AvGas Truck, 6 Cyl., 4 Speed,
1,200 Gal. Steel Coated Tank, Dual Pump
Meter & Reels, Bottom & Top Load, Fuel &
Defuel Capable**

TUGS

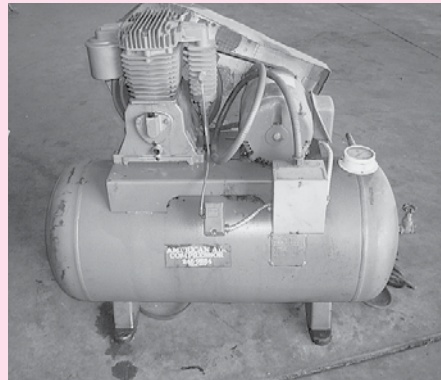
Northwestern Mdl. JG-40FK-2 Aircraft
Tug, 5,000 Lb. DBP, 6 Cyl., 4 Speed
Clarktor Mdl. FCT80 Aircraft Tug, 8,000
Lb. DBP, 6 Cyl., 4 Speed
Clark 4,000 Lb. DBP Tug, 6 Cyl., 4 Speed

NOTE: All tugs will need work. None
running at this time.

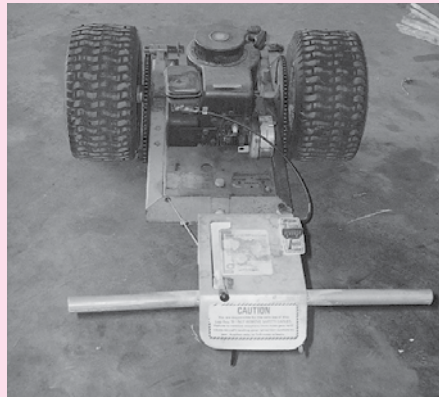
SHOP EQUIPMENT



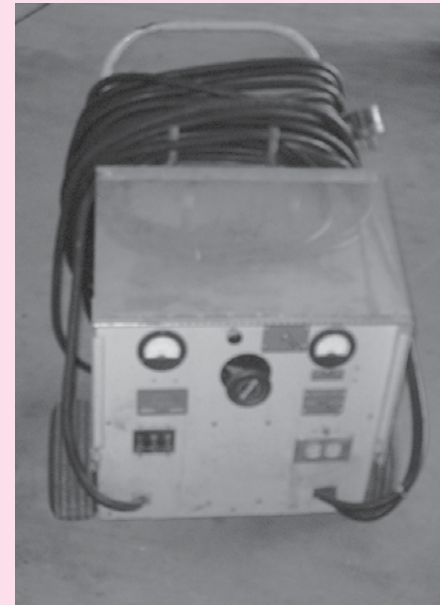
Consolidated Diesel Electric Model NC-8A Mobile Electric Power Plant, Has Detroit Diesel Engine, DC-Output 28V, 500 Amp Continuous DC-Output 28V, 750 Amp Starting Duty, AC-Output 3 PH, 120/208 V, 167 Amps, 400 Cycle, 60KVA



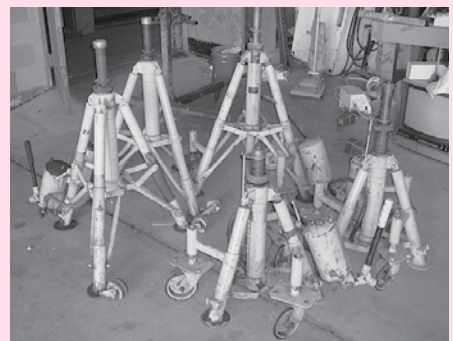
Horizontal Air Compressor 2 Cyl., 5 HP, 3 PH, 50 Gal. Tank



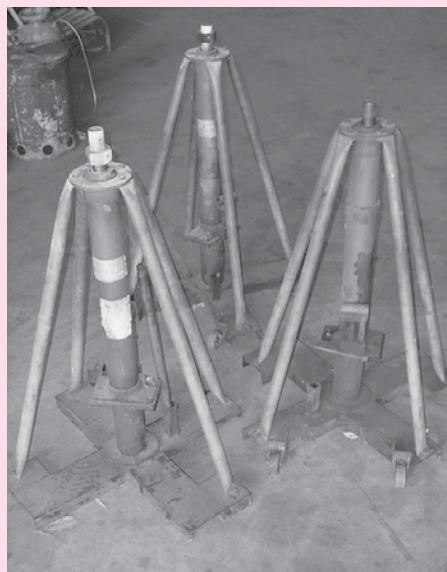
Lug Bug Mdl. 500 Walk Behind Aircraft Mover w/Briggs & Stratton 5 HP Gas Motor



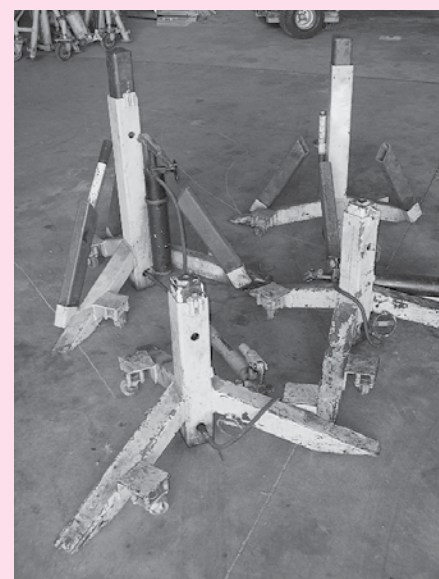
(2) Foxtronics Mdl. PR-2400-T-7 Start Cart, 14 & 28 V., 800-1600 Amp



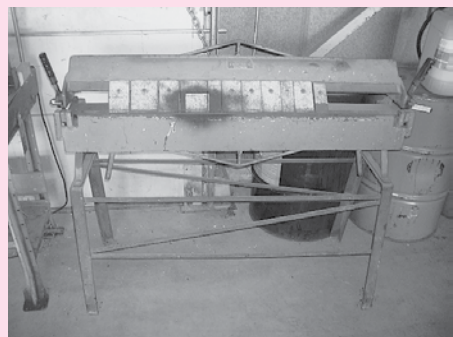
(2) McDermott P/N 3005-MIA Tripod Aircraft Jacks, 5 Ton, 38"



(3) Jackhouse 36" Aircraft Jacks



(2) Airborne 3 Ton Aircraft Jacks, 36" w/Extensions
(2) Airborne 24" Aircraft Jacks (Need Work)



Connecticut 48" Finger Break

Cotterman 9' Roll-A-Round Maintenance Stand

Various Tail Stands

16' Step Ladder

55 Gal. Barrel Dolly

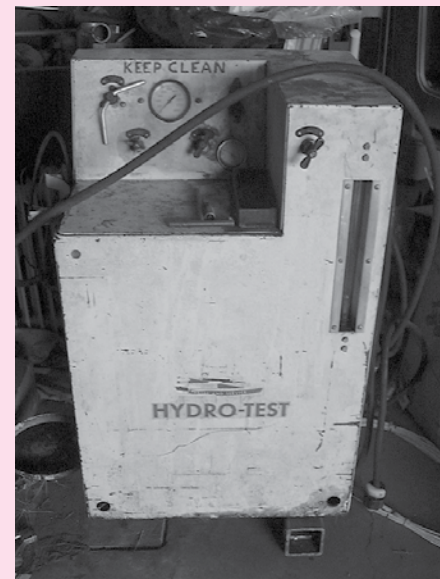
(2) Bench Grinders



Red Arrow 20 Ton H Frame Hyd. Press
Air Hose
Several Quartz Shop Lights
3' Maintenance Stand



Dayton 600,000 BTU Kerosene Heater
Die Hard 12 & 24V Battery Charger
Small Arbor Press
(2) Champion Mdl. WM-47 Hangar Swamp Cooler
(2) 36" Box Fans
Small Roll Round Tool Box w/Top Box
Hand Tow Bar



Cessna 3,000 Lb. Hyd. Mule
Red Arrow 3 Ton Hyd. Engine Hoist
AC Spark Plug Cleaner Tester
Nitrogen Carts & Gauges
Two Bottle Oxygen Cart & Gauges
White Industries Mdl. 01050 Refrigerant, Recovery, Recycling Center
Parker Hangar Sweeper w/Briggs Stratton 4 HP Gas Engine
Snap-On MT-540 Alternator Starter Tester
Delta Mdl. 28-150 Bench Top Band Saw
Columbia 5 Speed Beech Top Drill Press, 1/2 Chuck
Skill 14" Chop Saw
Gray Mills Electric Parts Washer
Teledyne TM Dual Mode Trickle Charger

HAND TOOLS

Eastern Magneto Synchronizer
Eastern Cable Tester
Cylinder Base Wrenches
Castleberry Mdl. 270 Static System Tester

ProVision 100 Fiber Optic Scope
Slick Mag Tool
Piston Ring Compressor Set
Tubing Flare Kit
Tubing Bender

Compression Tester
Number & Letter Stamps
Spot Check Kit
Pneumatic Rivet Puller
Snap-On Ft LB Torque Wrenches

MANUALS



Manuals: Approx. 250 to include: Parts & Maintenance, Cessna 150-300 & 400 Series, Piper PA-28, 24, & 31, Beech Musketeer thru Baron, Duke & Duchess, Mooney TPE 331, Fairchild SA-226, Misc., Luc, Cont. & PT-6

VARIOUS DC-9 INVENTORY

ACCESSORIES

(2) MA-3SPA Carburetors
(6) Starter Cores: 12 & 24 Volt
(8) Alternators: Various Some O/H
(8) Dry Vac Pump Cores
(5) New Dry Vac Pumps, Various P/N's

New Airborne Pneumatic Filters
(8) Fuel Pump Cores; Lear Sieglar, Weldon & Airborne, & Cont.
(2) New Airborne Fuel Pumps
New A/C Manual Fuel Pumps

New Fuel Transmitters & Senders
Various Magneto Cores
(9) Tach Generator Cores
Prop Governor Cores

NEW BENDIX & SLICK MAGNETO INV.

Coils, Distributor Blocks & Gears, Points, Capacitors, Condensers, Bearings, Bushings, Leads, Etc.

NEW HARDWARE

Several Solid Rivets, Cherry & Cherry Max Rivets, Blind Rivets, AN, NAS & MS Bolts, Screws, Washers, Nuts, Crush Gaskets, Cam Loc's, Cotter Pins, Nut Plate, Firewall Grommets, O-Rings, Gaskets, Adel Clamps, Worm Clamps, AN Hyd. Fittings

LYCOMING 0-235-L2C ENGINE CORE

MISC. AIRFRAME INVENTORY

New Seneca II L/H & R/H Windshield Spinners, Cessna Nose & Main Wheel Pants, Cessna Cabin Door, Piper Wing Tank, Various Cessna & Beech Flaps, High & Low Pressure Hose, Scat Hose, New Stratoflex Fire Sleeve

NEW OIL & LUBRICANTS

(45+) Cases of Mobil Synthetic Jet Oil 291
(45+) Cases of Phillips 20W-50XC Oil
(10) Cases of Phillips 25W-60XC Oil
(70 Qts.) Aeroshell W-80 Oil
(80 Qts.) Aeroshell 80 Oil
Aeroshell Grease, Lubricants, Spray Paint, Anti-Sieze, Sealing Compound, Aircraft Paint, Castle Plexto Plastic Glass Cleaner, 5606 Hyd. Fluid, Misc. Other Chemicals



CONT. & LYC. INVENTORY

Cylinder Gaskets, O-Rings, Seals, Misc. Other Cont. & Lyc. Inv.

SPARK PLUGS & FILTERS

Spark Plugs Include: Champion RHM-40E, RHM-38S, HM-41E & Misc. Others
Oil Filters Include: Champion & Continental Bracket & Piper Air Filters

AUCTIONEER'S NOTE:

Grayson Flying Service has been closed and the secured creditors have contracted with Starman Bros. Auctions to sell all assets at Public Auction. This auction offers a good selection of flying aircraft as well as a good selection of inventory and equipment.

Everything sells "AS IS, WHERE IS" with no warranties implied or expressed. Neither the auctioneer nor owners shall be liable for any incorrect description, fault, or defect. Everything positively sells to the highest bidder. Payment must be made in full day of sale. No property removed until settled for. Auctioneer not responsible for accidents or stolen property. All counts are approximate.

LINK TRAINER



Link GAT I Simulator P/N B633000 w/Plotter & Computer
Link GAT I Simulator For Parts
Cessna Flight Training Tapes & Cassettes
Various VCR Training Tapes

INSTRUMENTS & AVIONICS

(Approx. 25) Instruments: Directional & Horizon Gyro, Turn & Banks, RPM Gauges, Fuel & Manifold Press Gauges, Press. Gauges, ADF Ind., Etc.
(2) ARC RT-385A Nav Coms
Misc. Other Avionics

NEW LORD MOUNTS

Good Selection

PALLET RACK & CABINETS

Various Heavy Duty Pallet Racking
Misc. Metal Shelving

Approx. 8 Two Door Metal Cabinets
Metal & Wood Shop Benches

OFFICE EQUIPMENT

Several Metal Formica Top Office Desks, Some w/Credenzas
Various Computer Systems
Printers Including HP Deskjets & HP Laserjets
Office Desk & Side Chairs
Wood & Metal Book Shelves
Sony 24" & Magnavox 12" Color TV's
VCR Player
Several 2, 4 & 5 Drawer File Cabinets
Copier & Printer Stands

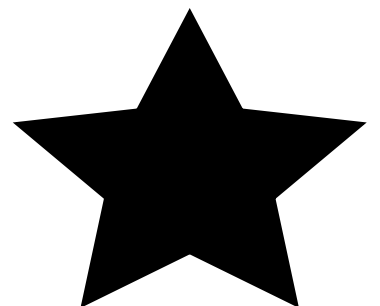
(25) Student Folding Arm Desk Chairs
Folding Lunch Room Tables
Couches
Bunn Coffee Pot
Pop Corn Maker
Hot Dog & Bun Warmer
Microwave
Time Clocks
(2) Propane Grills
Various Other Office Equipment

TERMS:

Cash, Certified Funds, or Company Check ONLY if accompanied by Bank Letter of Guarantee!! NO EXCEPTIONS! Wire Transfers will be accepted with a 20% non-refundable deposit day of sale. We also accept MasterCard and Visa. A 3% Buyers Premium will apply to this auction. If payment is Cash, Check, Certified Funds or Wire Transfer the 3% Buyers Premium will be waived.

 **STARMAN BROS.** 
AUCTIONS INC.

1240 Royal Drive ■ Papillion, NE 68046-2082
(402) 592-1933



 **STARMAN BROS.** 
AIRLINE SERVICES, INC.

9000 NW 15TH STREET ■ MIAMI, FL 33172
(305) 477-6865