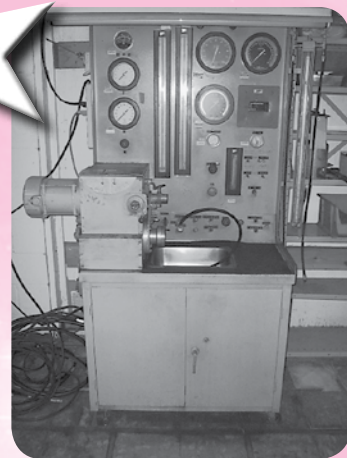
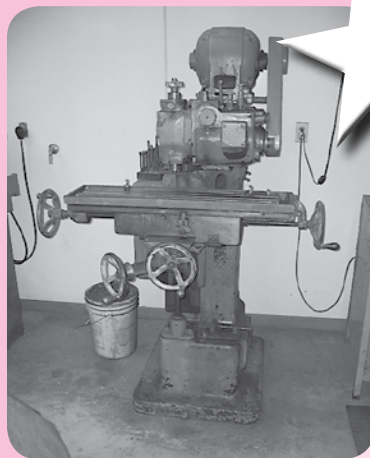
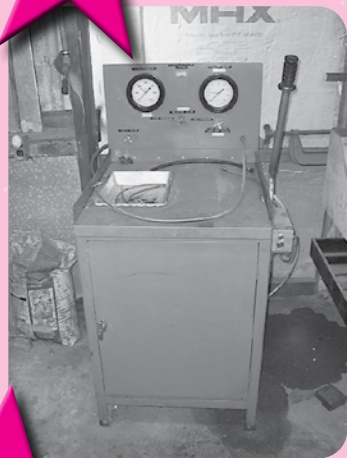
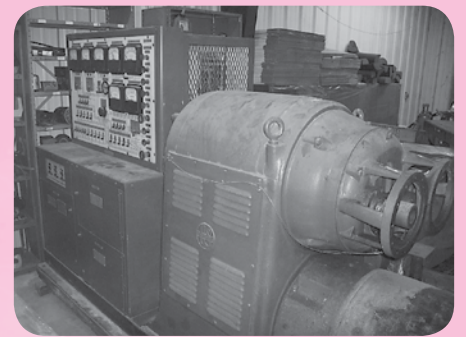
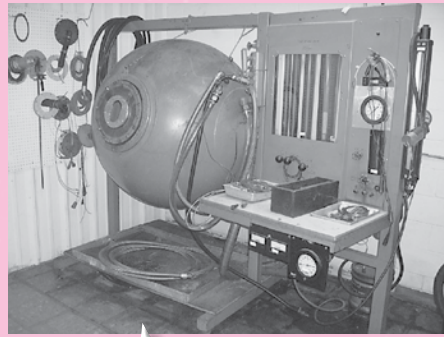
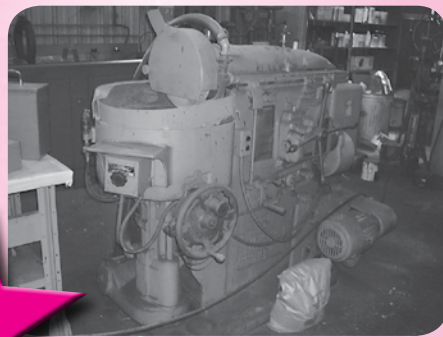
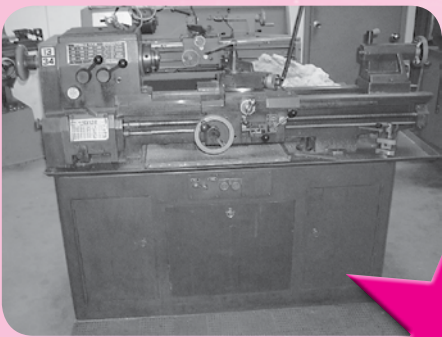


# AVIATION AUCTION

**FRIDAY & SATURDAY**  
**March 28<sup>th</sup> & 29<sup>th</sup>, 2014**  
**Starting at 9:00 A.M. Both Days!!**

**HATFIELD AVIATION, INC.**  
**8109 Braniff St. ~ Houston, Texas 77061**  
*Located on the South Side of Houston Hobby Airport*



**ABSOLUTE AUCTION!**

**OPEN HOUSE:** Thursday, March 27<sup>th</sup> from 8:00 A.M. to 5:00 P.M.

PRSR FIRST CLASS  
 U.S. POSTAGE  
**PAID**  
 MAIL U.S.A.

**First Class**

**STARMAN BROS. AUCTIONS INC.**

1240 Royal Drive • Papillion, NE 68046  
 (402) 592-1933  
 www.starmanauctions.com  
 Return Service Requested

**SALE SITE PHONE:**

**Scott Moore - (402) 681-3652 or**  
**Steve Starman - (402) 681-6456**



**AIRLINE CONNECTIONS:** Southwest Airlines & Various Other Airlines into Houston Hobby Airport. Only 1-1/2 Miles from Terminal to Sale Site. All Other Airlines go into Houston George Bush Int'l Airport, up to a 50 Minute Drive to Sale Site.

## HOTELS

Four Points by Sheritan  
 Houston Hobby Airport  
 8720 Gulf Freeway  
 Houston, TX 77017  
 (713) 948-0800

Hampton Inn  
 Houston Hobby Airport  
 8620 Airport Blvd.  
 Houston, TX 77061  
 (713) 641-6400

Holiday Inn Express  
 Houston Hobby Airport  
 8730 Gulf Freeway  
 Houston, TX 77017  
 (713) 941-6000

Best Western Plus Inn & Suites  
 Houston Hobby Airport  
 8778 Airport Blvd.  
 Houston, TX 77061  
 (800) 780-7234

LaQuinta Inn & Suites  
 Houston Hobby Airport  
 8776 Airport Blvd. ~ Houston, TX 77061  
 (713) 490-1008

**STARMAN BROS. AUCTIONS INC.**

1240 Royal Drive ~ Papillion, NE 68046  
 4901 E Falcon Drive ~ Mesa, AZ 85215  
 (402) 592-1933 ~ (480) 396-0380

Check Out Our Web Site...  
 www.starmanauctions.com



## HAND TOOLS & TEST SETS

Magnaflux Mdl ED-520 Eddy Current Tester  
 Nortec Mdl NDT-8L Eddy Current Tester  
 (2) Magnaflux ED-530 Eddy Current Testers  
 Large Selection of Eddy Current Test Probes  
 Eastern Mdl E50 Magneto Synchronizers  
 Magnaflux Mdl X1468 Mag Particle Inspection Kit  
 Burndy Cable Crimpers & Wire Strippers  
 Amp Crimping Tools & Strippers  
 Bendix 11-8950 High Tension Lead Tester  
 Barfield #2312G-8 Turbine Temp Indicator System Test Set  
 Blue Point Armature Growler  
 Armature Growlers  
 Burndy Cable Swedgers  
 Nicropress Sleeve Tool  
 AMP #59974-1 Hand Operated Crimper  
 Simpson Mdl 410 Photo Tachometer  
 Veeder-Root 6611 Digital Tachometer  
 Mitutoyo Snap Gauge  
 (2) Federal Series 300P Snap Gauges  
 Snap-On Stud Puller  
 Several Bearing Pullers & Splitters Includes Slide Hammers  
 Pittsburg Blind Hole Bearing Puller Sets  
 Starrett Dial Indicators & Magnetic Bases  
 Aero Quality Trickle Charger  
 (6) Snap On Torque Wrenches In & Front Pound  
 Mitutoyo & Starrett Inside Mics  
 Mitutoyo Series 368 Three Point Internal Micrometers  
 Mitutoyo 6" - 12" Micrometer Set  
 Telescoping Gauges  
 6-Piece Micrometer Set 0-6"  
 Various Other Micrometers & Standards  
 Pace Solder De-Solder Station  
 (3) Gauge Block Sets  
 Lapmaster Monochromatic Light & Optical Flats  
 Skykes Bearing Extractor Set  
 Several Tap & Die Sets, Metric & Standard  
 Several Reamers Includes Expandable  
 (2) DuMont Broach Sets  
 Simpson Mdl 388 Degree Fahrenheit Tester  
 Slick Magneto Overhaul Tool  
 Simpson Mdl 313 Volt, Ohm, Millimeter  
 Simpson 470 Multimeters  
 Weller Soldering Irons & Guns  
 Expandable Reamer Set  
 (2) Sencor Mdl LC53 Capacitor-Induction Analyzers  
 Bendix Primary Condenser Tester  
 Several Simpson Multimeters  
 Several Digital Multimeters  
 Biddle Megger #210159  
 Various Pressure Gauges  
 SPM Mdl 43A Shock Pulse Meter  
 IRD Mdl 306 Portable Vibration Meter  
 Newage Multi-Range Portable Metal Hardness Tester  
 King Deep Reading Brinell Microscope  
 Hole Sanders  
 Chas Englehard Type N2 Electric Thermometer  
 Several Socket Sets  
 Several Drill Bit Sets, Number & Letter  
 UVP Mdl UVX Digital Radiometer  
 Fenwell Theroswitch & Temperature Test Kits  
 Wheatstone Bridges  
 Kroy Mdl TM-600 Label Maker  
 Rigid Pipe Wrenches  
 Pneumatic Drills  
 Pneumatic Impact Wrenches  
 Heat Guns  
 T-Handle Hex Key Sets  
 C-Clamps  
 Bolt Cutters  
 Snap Ring Pliers  
 Pneumatic Sheet Metal Shear  
 Rimac Spring Scale  
 Phase Sequence Indicator Test Boxes  
 DC Millivolt Meters  
 Several Helicoils  
 Dwyer Mark II Manometer  
 Several Letter & Number Stamps  
 Hunter Spring Scale  
 Electric Engravers  
 Gasket Cutters  
 Champion Spark Plug Gap Setting Tools  
 Hawker 125 Dunlop Brake Tools  
 Black & Decker Sawzall  
 Several Electric Drills 1/4" & 1/2"  
 (2) Electric Circular Saws  
 DeWalt Electric Jig Saw  
 Rivnut Tools  
 Dayton 7" Sander Grinder  
 Aircraft Breaking System Corp Chamber Tool #4-10362  
 Wheel Balancer  
 Various Shop Build Test & Breakout Boxes for Testing Accessories & Electrical Components

## NEW BEARINGS

Large Selection Including Timken Wheel Bearings, Large Selection of Accessory Bearings, Brands Include SKF, Fafnir, Consolidated, Delco, TRW, Torrington, MRC, Garlock Seals, Etc.

## NEW GRIMES INVENTORY

Collars, Gears, Clips, Bushings, Brushes, Transistors, Insulators, Etc.

## SHOP EQUIPMENT



Universal Pressure Blast Cabinet w/Dust Collector, 48" D x 48" W x 48" T Cabinet Size, w/Door on each side



(2) Zero Mdl BNP-55 Bead Blast Cabinets w/ Reclaimers, 24" D x 42" W x 30" T Cabinet Size



Standard-Modern Mdl 1334 Lathe, 13" Swing over Bed, 48" Bed, 34" Between Centers, 36-1,800 RPM Spindle Speed



KO Lee Mdl BA-960 Tool Grinder, 5-1/4" x 27" Table, 22" Between Centers  
 20-Ton H-Frame Press  
 Carolina Tool Mdl HD10 Horizontal Band Saw  
 System One 500 Series Parts Washer Recycle System  
 Graymills Electric Parts Washer  
 Magnaflux Mdl ZA-28G Self Contained Zygo Line w/ Rinse, Dryer & Black Light  
 Consolidated Digital Readout Torque Test Set w/Mdl 950-DT Digital Readout & 100-100 FT/LB Load Cell & Mdl TTPM-41 Transducer Selector  
 Sweeney Mdl 7065 Torque Wrench Tester 0-6000 In/Lb & 0-500 Ft/Lb  
 Sweeney Mdl 7735 Torque Wrench Tester 200-2000 In/Lb  
 14" x 24" Steel Surface Plate  
 Hullhorst Armature Under Cutter  
 Toledo Platform Scale



Van Norman No. 12 Horizontal Milling Machine, 37" x 9" 3-Slot Table, Head Spindle Speeds 70-1,465 RPM



Dake Mdl 2B-1 Arbor Press  
 Enco Granite Check Comparator Stand w/Dial Indicator  
 Van Norman Indexing Head  
 36" Shop Fan  
 Bench & Milling Vices  
 Bench Grinders



Alkota Mdl 181-B Gas Fired Steam Cleaner BTU-440,000 Hr. Input



Amtek Mdl R-100 Dead Weight Pressure Gauge Tester w/ Weights  
 Oxygen Acetylene Torch Set w/ Cart, Gauges, Torches  
 Dumore 57-011 & No. 11 Tool Post Grinders  
 Delta Variable Speed Floor Mdl Drill Press  
 Central Machinery 26" Industrial Scroll Saw, Variable Speed  
 (2) Meyers 24" Aircraft Jacks, 3-Ton  
 Lapmaster No. 4 Lapping Machine  
 (2) Pedestal Grinders  
 Devilbiss Paint Booth 30" x 30" x 30" Cabinet w/Rotating Table

Quincy Mdl QT15 Dual Stage Horizontal Air Compressor, 2.5 x 4.5 x 3.5 Size, 10-HP Motor, 120-Gallon Tank



Bear Bekomatic Mdl 50B Electronic Balancing Machine for Armatures & Rotors  
 Bear Bekomatic Mdl 40B Balancing Machine (Needs Work)  
 Circle Seal Controls 2-Bottle Nitrogen Cart, 3,500 PSI  
 Tronair Mdl 02-1036-0100 Hydraulic Aircraft Jack, 10-Ton, 36"  
 Tronair Mdl 02-1036-0100 Aircraft Jack, 10-Ton, Air over Hydraulic, 36"  
 (2) Bendix Type B-2B Tripod Aircraft Jacks, 20-Ton, High Wing  
 Tronair Mdl 02-1032-0100 Aircraft Jack, 10-Ton, Air over Hydraulic, 32" Closed, 60" Extended  
 McDermott Jet Mac Mdl 3001-80 Tripod Aircraft Jacks, 10-Ton  
 Niagara Mdl 36-F 36" Sheet Metal Sheer

## VARI-DRIVES & TEST BENCHES



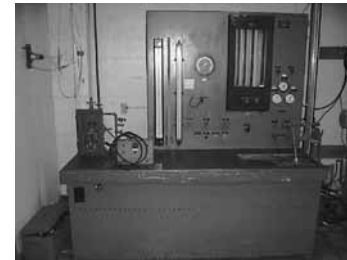
United Type A-2 Aircraft Generator Test Stand, Dual Head 2,350 RPM-9,000 RPM Low Side, 3,000-11,600 RPM High Side, 60-HP Motor, 500 Amp Load Bank



US Vari-Drive Starter Generator Test Bench, Dual Head 2,350-9,000 RPM Low Side, 3,000-11,600 RPM High Side, 600-Amp Load Bank w/Blower, 50 HP



United Type A-1 Aircraft Generator Test Stand (Vari-Drive), 25-HP Motor, 12,000 RPM, Single Head w/Cooling Fan, 600 Amp Load Bank



Stromberg Bendix Mdl 395091 Carburetor Flow & Test Bench for PD-12 & Holly Carburetor Testing Holley



US Vari Drive Bench, 15-HP, 300 Amp Load Bank, Dual Head 2,400-12,000 RPM High Side, 1,100-5,500 RPM Low Side



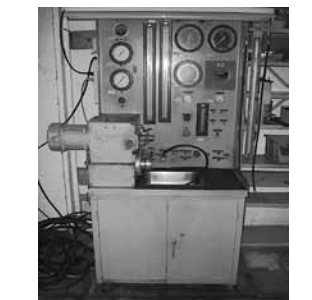
Submergible Boost Pump Test Stand for All Types of Submergible & Boost Pumps



Potter-Rayfield Inc Mdl DM-15(AC-DC) Starter Motor Torque Tester, Rated Capacity 15 Ft/Lb Torque, 4,000 RPM Speed, 50 Amp



United Type A-2 Generator Test Stand, Vari-Drive, 50-HP Motor, Dual Head 2,350-9,000 RPM Low Side, 3,000-11,500 RPM High Side w/550 Amp Load Bank



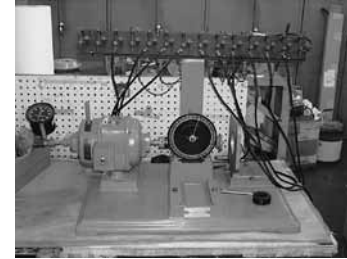
Continental Fuel Pump & Fuel Servo Test Bench for RSA-5 & -10 Servos & Fuel Pumps of All Types



Air Associates Inc Mdl TE872 Hydraulic Pump Test stand, Skydrol, Up to 5,000 PSI, 7-10 GPM



Clinton DC Power Supply Mdl S1012H0-2, AC Input: 230-Volt, 42-Amp, 60 Cyl.; DC Output: 6-12-Volt, 1,000 Amp, 12 KW



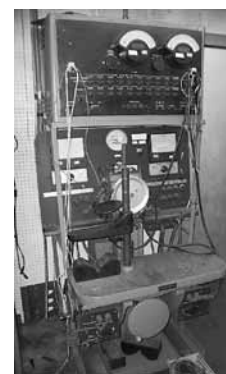
HG Makelim Mdl No. B Magneto Test Stand



Sprague Mdl S529 Hydraulic Test Stand, 5606 Fluid, Up to 3,000 PSI, 6,000 RPM

Prony Brake for Torque Testing Radial Engine Starters E-80, 1416 w/Variou Ft/Lb Gauges  
 Type M-30 Tach Generator Test Box  
 (3) Variable Resistors  
 Magnet Charger Bench  
 Vari Drive, 15-HP Motor, 100 Amp Load Bank, Dual Head, 400-1,000 RPM Low Side, 1,000-2,700 RPM High Side

Wiedenhoff Mdl 501 Alternator Generator Test Stand



## ELECTRICAL TEST SETS



Sun Electric Type A-1 Load Bank, Rating 60 KW, 40 KVAR, 400 Cycles, AC Avionics Instruments Static Inverter Test Bench for Testing Mdl 1A700 (1A) & 1A700 (1B) & (1C) Inverters



Clinton Mdl S524S0S DC Power Supply, AC Input 230 Volt, 35 Amps; DC Output 4-24 Volts, 500 Amp, 12 KW



Elgar Programmable AC Power Supply Mdl 55974-3599948-1 & Unitron Mdl CR074-3A Power Frequency Converter, 50/60 Hz, 30 (WYE) to 400 Hz, 30 WYE



Generator Control Test Panel for P/N 976J254-4 GCU's



Lear Siegler DC Voltage Regulator Test Stand for 51509-001, -002, -006 Voltage Regulators & Lear Siegler DC Generator Control Unit Test Panel for 51530-006, -007 & -008 GCU's



GE GCU Test Stand Panel for Mdl 3S2060DC-168A2 & A3, 3S2060DC168C1B & 3S2060DC164, B1A, B1B & B2



Transistor Devices Mdl SPS-2371 Dynaload Load Bank 40V-400A-12KW

GCU Test Bench for GE 3S Series GCU's Lucas Mdl 51576-003 GCU Test Panel

AC Electrical Test Stand Load Bank, 400 Hz, for Rotary Inverters & 4-Wire Alternator Systems

Avtron T31 Control Panel Test Set

Type L-A1 Motor Generator Test Stand

Windshield Heat Control Test Panel for WHC-1500A Controllers

B&K Precision 3020 Sweep Function Generator

HP 8011A Pulse Generator

21B17 Test Box

Fluke 8840A Multimeter

Sencore Mdl LC-102 Capacitor-Inductor Analyzer

PMC Mdl BP-40G AC Power Supply

Lear Siegler DC Generator Control Panel Test Stand for 51530-000, -001, -002 & -006 (A&B) Generator Control Panels

HP 6274B DC Power Supply 0-600, 0-14 Amp

Sorensen DCR60-13 DC Power Supply

B&K Precision 3020 Sweep/Function Generator

Tektronix Type 114 Pulse Generator

HP 8015 Pulse Generator

(2) Simpson 711 Pulse Generators

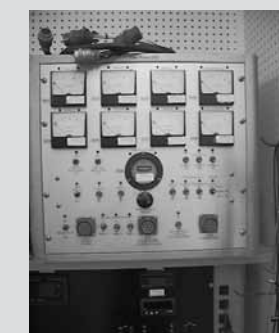
Fluke Mdl 5100B AC, DC Voltage Calibrator

HP Mdl 6920B Meter Calibrator

Unitron Mdl FSB (1x-2x) Microscope

GCU Test Set for Lear Siegler GCU's

Several Other Pieces of Electronic Test Equipment



JET Static Inverter Test Bench for SI-1250, SI-1500, SI-2500 & SI-3000 Inverters

Tektronix Mdl TDS3014 4-Channel Color Digital Oscilloscope 100 MHz-1.25 GS

Fluke 8840A Multimeter Macarr Type B-9 Power Supply, Output 400 Amp, 28-Volt, Input 220/440 Volt

## WHEELS & BRAKES

(4) Goodrich #101-8001-3 Wheel Assys, O/H

(20+) Several Lear Jet Brake Cores, Falcon 50 & 20 Brake Cores, Westwind Brake Cores, Metro Brake Cores, Citation Brake Cores, Several Wheels & Wheel Halves Includes 6", 8", 10", 12", Etc.

Wheel & Brake Inv Includes a Large Selection of New & Used Brake Discs, Stators, Backing Plates, Press Plates, Torque Tubes, Piston Housings, Pistons, Insulators, Brake Linings, Wheel Weights, Torque Tube Backing Plates, Bushings, Seals, Packing, Calipers, Bolts, Linings, Rotors, Tire Valves, Brake Rivets, Spacers, Seals, Heat Shields, Brand Names Include BFG, ABS, Dunlop, Bendix, GYS< GYN, for Lear Jet, King Air's, Falcon, Some Hawker, Citation, & Metro

## WHEEL & BRAKE SHOP EQUIPMENT



Hunter System 700 Computer Wheel Balancer, 500 RPM Balancing Speed



(2) Sheppard-Thomas Mdl M110C Foot Operated Pneumatic Brake Riveters, 10,000 lbs Pressure, for up to 16 1/2" Wide Brake Shoes  
Tire Inflation Cage  
Wheel Balancer & Tire Bead Breaker



Brake Pressure Test Bench 0-160 PSI Low Pressure & 0-6,000 PSI High Pressure  
Parker Mdl DA-200 Contour Probe  
Shop Built Wheel Bead Brake w/Variou Size Rings

Herald No. 22 Brake Disc Grinder w/16" Magnet Chuck

## SHOP BENCHES, CARTS & CABINETS

Several Metal Shop Benches  
Machinist Cabinets  
Several Parts Carts  
(14) 2-Door Metal Cabinets  
30 & 40-Gallon 2-Door Fireproof Cabinets

## NEW LEAR ROMEC INVENTORY

Overhaul Kits, Armatures, Housings, Bodies, End Caps, Cans, Gaskets, Brushes, Shims, Springs, Plugs, Hardware, Etc.

## NEW INTERTECHNIQUE INVENTORY

Armatures, Bearings, Hardware, Etc.

## NEW ELECTROMECH INVENTORY

Armatures & Bearings, Etc.

## NEW DYNAMIC AIR INVENTORY

Brushes, Brush Holders, Etc.

## NEW STRATOPOWER INVENTORY

Shims, Covers, Springs, Pistons, Drive Couplings, Retainers, Seals, O-Rings, Orifices, Etc.

## NEW VICKERS INVENTORY

Bearings & Hardware, Etc.

## NEW DELCO INVENTORY

Bearings, Bushings, Brushes, Starter Drives, Field Coils, Etc.

## NEW WELDON INVENTORY

Electric Motors, Blades, Hardware, Etc.

## NEW PRECISION & BENDIX FUEL INVENTORY

Large Selection Including Diaphragms, Venturies, Levers, Shafts, Screws, Plugs, Pins, Plungers, Springs, Nozzles, Nozzle Kits, Valves, Bushings, Hardware, Seats, Float Kits, O-Rings & Packing, Links, Plungers, Strainers, O/H Kits, Consolidated Fuel CFK-10ADI Quick Kits, Etc.

## BENDIX MAGNETO INVENTORY

Coils, Breaker Assys, Blocks, Gears, Bushings, Etc.

## NEW CONTINENTAL FUEL INVENTORY

Large Selection of Nozzles, Shafts, Levers, Gaskets, Balls, Shafts, Valves, Etc.

## NEW THOMPSON INVENTORY

Seals, Diaphragms, Gaskets, Blades, Bearings, Seals, Rotors, Etc.

## BARBER COLEMAN INVENTORY

Bushings, Bearings, Armatures, Etc.

## NEW ADEL INVENTORY

Armatures, Brushes, Hardware, Etc.

## NEW FLITE-TRONICS & J.E.T. ELECTRICAL INVENTORY

Transistors, Static Inverter Kits, Capacitors, Diodes, Boards, Resistors, Condensers, DC Motors, Cells, Relays, Etc.

## HYDRAULIC & STEEL BRAIDED HOSE

Very Large Selection of High & Low Pressure Hydraulic Hose, Steel Braided Hose

## ACCESSORIES

Westinghouse Generator 976J417-2, O/H  
Bendix 28B135-168B AC Generator, O/H  
Bendix 30B119-9A DC Generator, O/H  
Goodrich Mdl 23080-001 Starter Generator  
Rotex C5104 Starter, O/H  
(3) Bendix RSA-10AD1 Fuel Injection Servos, O/H

24-Volt/95-Amp Alternator, O/H  
(2) 756-21-C (E-80) Starters, O/H  
Bendix #2524439-4 Fuel Controller, O/H  
(2) 28-Volt/60-Amp Ford Alternators, O/H  
24-Volt/70-Amp Alternator, O/H  
Skytec 24-Volt Lightweight Starter, O/H  
MZ-4222R Starter, O/H  
Stratopower #66Way300-1 Hydraulic Pump, O/H

Parker 2751550 Hydraulic Pump, O/H  
12-Volt Generator, O/H  
Romec Fuel Pump, O/H  
Bendix Dual Magneto, O/H

Large Selection of Starter Generators & AC, DC Generators Includes Several Complete Units, Various Manufacturers, Several Units in Various States of Overhaul, As Removed Inv to Include Armatures, Fields, Stators, Housings, End Bells, Shafts, Brands Include Bendix, Lucas, Lear Siegler, Aucilec, GE, Shinko

Continental Fuel Pumps, Flow Dividers, Weldon Fuel Pumps, Beech Landing Gear Motors, Leland ASH Series Static Inverters, (Completes & Partials), KA Blower Motors, Dynamic Air Axial Flow Fans (Complete & Partials), King Air Flow Packs, Prestolite & Delco 12 & 24-Volt Starters, Misc Landing Lights & Inv

Starter Cores, 12 & 24 Volt  
(16) Alternator Cores, Various Amps  
(55+) Tach Generators Including Turbine, Several Disassembled Units  
(20+) Fuel Injection Servos Includes Bendix RSA-5's & RSA-10's, Several Disassembled Units  
(25) Fuel Boost Pumps Including Lear, Romec, Airborne, Adel & Pesco  
(28) Fuel Pumps to Include Thompson, Romec, Titon, Beechcraft & Pesco  
(25) Piper, Strato Power, Vickers & Misc Hydraulic Pumps  
(3) Bendix Turbine Engine FCU's  
(24) Wet Vac Pumps  
(14) Pressure Carburetors Include PS-5C, PS-7BD & PS-5BD  
Fuel Pump Motors  
Alcohol Pumps  
(2) Fuel Booster Pumps, O/H

## ELECTRICAL INVENTORY

(2) DC Generator Control Panels 25812-1 & -3, O/H  
(2) 28-Volt DC Voltage Regulators Lear Jet #6608203-3 & -14, O/H  
(2) Lamar 28V Voltage Regulators, O/H  
Grimes Strobe Light Power Supply, O/H  
Static Inverter PC-15B, O/H  
Leland ASH574-1 Static Inverter, O/H  
Jet #501-1167-01 Static Inverter, O/H  
PC-15 O/H Static Inverter  
Several O/H Voltage Regulators

O/H Reverse Current Relay  
(20) Voltage Regulators, All Types  
(10) Lear Siegler DC Static Voltage Regulator  
(8) PC-17 Static Inverters  
Several Carbon Pile Regulators  
Several Reverse Current Relays  
(6) Ignition Exciters  
Large Selection of Leland, Bendix Motor Generators & Inverters Includes Complete Units & Units in Various States of Overhaul

## NEW BENDIX STARTER & GENERATOR INVENTORY

Bearings, Brushes, Terminal Covers, Starter Generator Shafts, Armatures, Field Coils, Brushes, Leads, Stators, Couplings, Terminal Blocks, Pots, Hardware, Etc.

## NEW WESTINGHOUSE INVENTORY

End Bells, Brushes, Bearings, Buss Bars, Etc.

## NEW HARDWARE

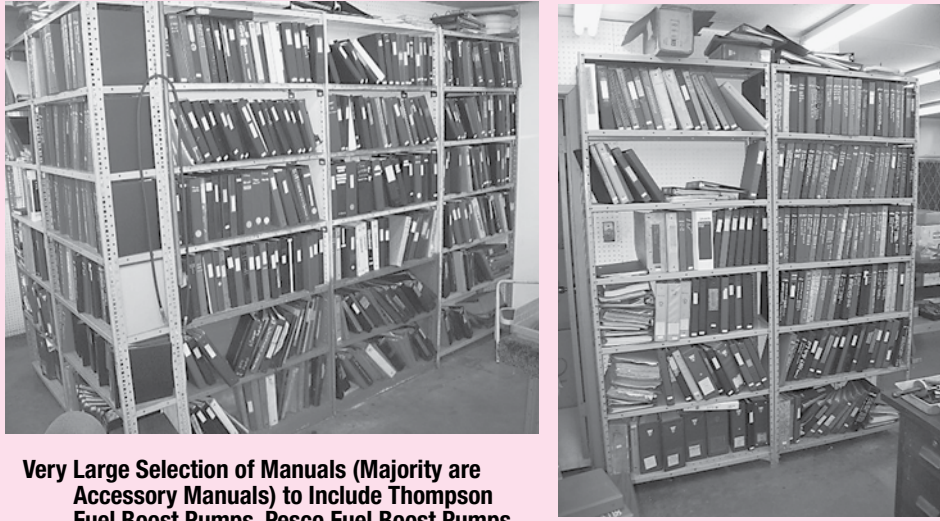
Large Selection Includes AN Bolts, Nuts, Screws, Washers; MS Snap Rings, Washers, Nuts, Screws, Bolts & NAS Screws & Washers

## LARGE SELECTION OF TEFLON RINGS & SEALS

## NEW LELAND & GE INVENTORY

Terminal Blocks, Terminal Block Covers, Brushes, Bearings, Bushings, Shafts, Covers, Clamps, Brush Holders, Resistors, Controllers, Armatures, Fields, Housings, Transistors, Condensers, Insulators, Diodes, Hardware, Shims, Etc.

## MANUALS



Very Large Selection of Manuals (Majority are Accessory Manuals) to Include Thompson Fuel Boost Pumps, Pesco Fuel Boost Pumps, PT-6 Nozzle Manuals, All RSA-5 & RSA-10 Fuel Injection Servos, Holly Carburetor, Zenith Boost Pumps, Pesco & Adel Engine Driven Fuel Pumps, Romec, Titan & Delco Fuel Pumps, Bendix PD Carburetor, Weldon, Pesco & Dukes Fuel Pumps, Flow Divider Nozzles, Lucas 23079 & 076 Series DC Starter Generator, Most all Lucas Starter Generators, Bendix 30E20 Starter Generators, Grimes Strobe, Landing Light & Beacon Manuals, LSI DC Generator Controllers, Jet Static Inverters, Leland Static Inverters, Avionic Instrument Static Inverters, Bendix Inverters & Voltage Regulators, LSI Voltage Regulators, Rotex & Lucas Contactors, LSI DC Generators, GE Generator Control Panels, Bendix Inverters, Stratopower 65, 66 & 67 Series Hydraulic Pumps, Bendix 30E16 Generators, Very Large Selection of Wheel & Brake Manuals to Include King Air, Lear Jet, Fairchild, Falcon 50 Citation, Gulfstream II, III & IV, Falcon 10 & 20, Hawker, Canadair, PA-31 Fokker, Sabreliner, Bendix & Slick Magnetos  
Brake Skid Control Box Manuals, APC 400S & 200S Series Starter Generators, Abex Hyd Pumps, Dynamic Air Vane Axial Fans, Electro Mechanic Manuals, Every Type of Lucas Starter Generators, Dunlop Wheel & Brake Manuals, Cleveland Wheel & Brakes, Vickers Hydraulic Pumps, Pesco & Sunstrand Hydraulic Pumps, Auxilec Starter Generators, Lucas AC Generators, 2CM Series Generators, Radial Engine Accy Manuals, Etc.

## OTHER SMALLER NEW INVENTORIES

Includes Smith, Dowty, Rotol, ABEX, Janitrol, Misc Inverter O/H Inv

## DISASSEMBLED SLICK & BENDIX MAGNETO PARTS

## LARGE SELECTION OF MS & NAS O-RINGS, SEALS & GASKETS

## LEAR SIEGLER ELECTRICAL INVENTORY

Transistors, Resistors, Diodes, Etc.

## NEW LUCAS (ROTAX) INVENTORY

Terminal Blocks, Gaskets, Bearings, Leads, Brushes, Covers, Clips, Seals, Rings, Insulators, Hardware, Etc.

## NEW LUCAS & LEAR SIEGLER INVENTORY

Resistors, Relays, Diodes, Transistors, Bearings, Brushes, Shafts, Fans, End Bells, Bands, Clamps, Brushes, Caps, Hardware, Covers, Armatures, Condensers, Etc.

## NEW GE 2CM272-B1 INVENTORY

Bushings, Capacitors, Transistors, Diodes, Resistors, Etc.

### **AUCTIONEER'S NOTE:**

The Owners of Hatfield Aviation, Inc. have retired and closed the business down after 38+ years. Starman Bros. Auctions has been contracted to liquidate all assets at public auction. This auction will have a very large selection of accessories and wheel & brakes including a large selection of new overhauled inventory. Also being sold is a very good selection of hand tools and test benches of all kinds.

Everything sells "AS IS, WHERE IS" with no warranties implied or expressed. Neither the auctioneer nor owners shall be liable for any incorrect description, fault, or defect. Everything positively sells to the highest bidder. Payment must be made in full day of sale. No property removed until settled for. Auctioneer is not responsible for accidents or stolen property. All counts are approximate. Announcements made day of sale takes precedence over all printed material.

### **LOADING & REMOVAL:**

Once an item is sold the winning bidder is responsible for its removal. Any cost responsibility and risk of removal of purchases remain with the buyer. Removal may begin after payment in full and must be completed by the posted deadlines. **NO EXCEPTIONS OR EXTENSIONS!** There may be various trucking companies on site to arrange for transportation. However, it will be the buyer's responsibility to arrange their own trucking.

### **PAYMENT TERMS:**

Cash, Certified Funds, or Company Check ONLY if accompanied by Bank Letter of Guarantee!! **NO EXCEPTIONS!** Wire Transfers will be accepted with a 20% non-refundable deposit day of sale in one of the forms listed above. We also accept MasterCard and Visa with an additional 3% Buyers Premium applicable.

### **PROXY BIDS:**

If you are unable to attend this auction we will bid on your behalf. For more info visit our web site at [www.starmanauctions.com](http://www.starmanauctions.com) and click on Upcoming Auctions and scroll down to the Proxy Bid Section. Complete form and fax to (402) 592-2327 or call Steve at (402) 681-6456.



 **STARMAN BROS.**   
**AUCTIONS INC.**

1240 Royal Drive ~ Papillion, NE 68046 ~ 4901 E Falcon Drive ~ Mesa, AZ 85215  
(402) 592-1933 ~ (480) 396-0380