

AVIATION

AUCTION

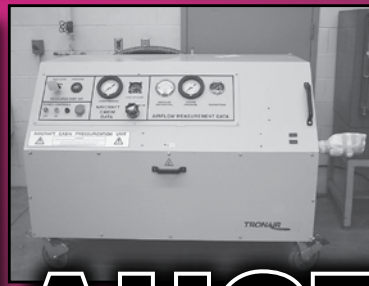
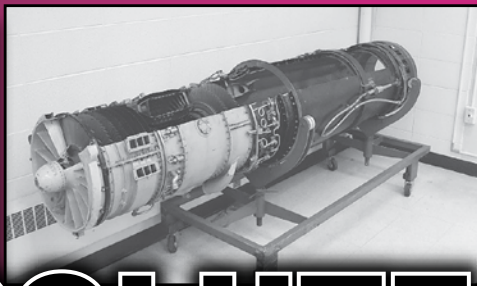
Saturday, October 14, 2006

STARTING AT 9:00 A.M.

**HAWKEYE COMMUNITY COLLEGE
A&P SCHOOL**

1501 East Orange Rd., Waterloo, Iowa

DIRECTIONS: From U.S. Hwy. 20, take Exit 230 (Hwy. 21), go South on Hwy. 21 two miles to East Orange Rd., turn left (or East), go approximately one mile to sale site. Watch for signs.



ABSOLUTE AUCTION

PRSR FT FIRST CLASS
U.S. POSTAGE
PAID
MAIL U.S.A.

First Class

**SALE SITE PHONE
319-296-4423**

AIRLINE CONNECTIONS

Limited service into Waterloo on Northwest Airlines or various airlines into the following cities: Cedar Rapids, Iowa (one hour drive); or Dubuque, Iowa (one hour and 40 minute drive).

HOTELS

HOTEL HEADQUARTERS

Heartland Inn
1809 LaPorte Rd.
Waterloo, Iowa
319-235-4461

Hampton Inn
2034 LaPorte Rd.
Waterloo, Iowa
319-233-2044

Holiday Inn Express
2141 LaPorte Rd.
Waterloo, Iowa
319-233-9191

Fairfield Inn
2011 LaPorte Rd.
Waterloo, Iowa
319-234-5452

**STARMAN BROS.
AUCTIONS INC.**

1240 Royal Drive • Papillion, NE 68046-2082
(402) 592-1933

www.starmanauctions.com

Return Service Requested

**STARMAN BROS.
AIRLINE SERVICES, INC.**
9000 NW 15TH STREET ■ MIAMI, FL 33172
(305) 477-6865

**STARMAN BROS.
AUCTIONS INC.**
1240 Royal Drive • Papillion, NE 68046-2082
(402) 592-1933
www.starmanauctions.com

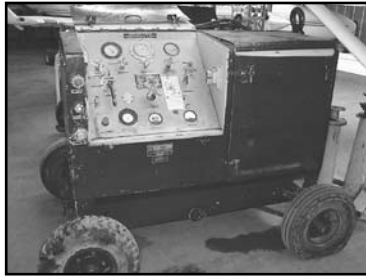
★ ★ ★ RAMP EQUIPMENT ★ ★ ★



Clark CT40 Tug 4,000 Lb. D.B.P., 6 Cyl. Flat Head, Gas, Manual Trans.
Hobart Mdl. 488 25 H.P. 600 Amp 28V Generator Cart



Aircraft Tug Mdl. JG-40 Chrysler 6 Cyl. Gas, Automatic, 4,000 Lb. D.B.P.
Kurz and Root Mdl. GAMA1 Generator Cart 28V DC
70 Gal Fuel Cart



Sun Mdl. D-6 Hyd. Mule Test Cart 10 GPM at 3,000 PSI, 5 GPM at 5,000 PSI 220/440 3 Phase
Turbine Heater Cart Boeing Mdl. 502-7D



Davey Mdl. MC1A Airstart Cart 15 CFM at 3,500 PSI, 4 Cyl. Wisconsin Gas Engine
Herman Nelson Mdl. GT 3090D Portable Heater Cart

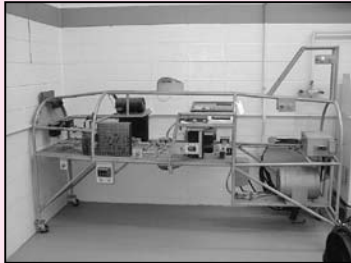


(2 Ea.) Hobart GPU Start Cart P/N 2361 30KW, 28V DC, 8 Cyl. Gas Chrysler Industrial Hemi Engine
400,000 BTU Portable Heater Mdl. BT-400-30

★ ★ ★ TRAINING AIDS and CUTAWAY ENGINES ★ ★ ★



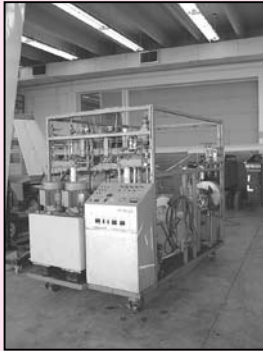
Avotek Mdl. H37 Hyd. System Training Board, Has Cylinders, Hand Pump and Accumulator
(4 Ea.) Nav. and Landing Light Training Boards (All Have Landing Lights and Motors)



TA System A-7D Aircraft Electrical Systems Training Aid, Has Functional Nav. Lights and Beacon, Inverters, Switching Panels and Circuit Breaker Boards, Uses 220V 3-Phase Motor

TA Systems F-105 Fire Detection and Warning Systems Training Board. Has Fire Detection Sensors, Wiring Harness and Panels.

Cessna RG L/G Cabin Section Training Aid Complete w/all Gear Boxes, Actuators and Main and Nose Gear

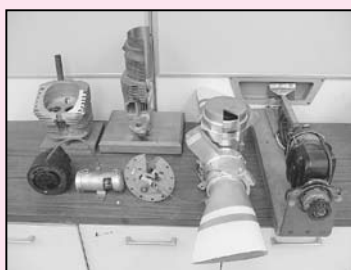


TA Systems A-7D Hydraulic Power/Landing Gear Training Stand, Dual Motors and Hyd. Pumps, Multiple Actuators, Accumulators and Reservoirs

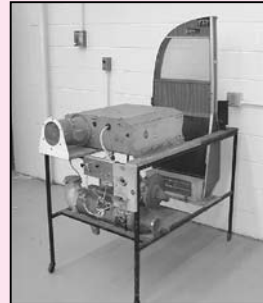
(2 Ea.) Landing Gear Training Aids



(3 Ea.) Actuator and Hyd. Training Aid Boards w/Electric Motors, Multiple Actuators and Accumulators



Good Selection of Aircraft Engine, Accessory, Airframe and Instrument Cutaways and Training Aids



(4 Ea.) Janitrol and Southwind Cabin Heater Training Aid Stands

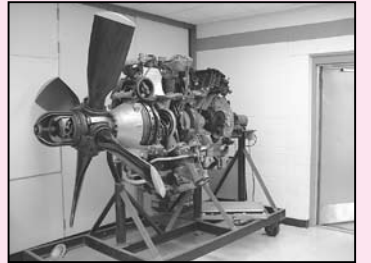
Aircraft Brake Training Aids Instrument Panel Training Board

(2 Ea.) Fire Detection and Over-Heat Training Boards

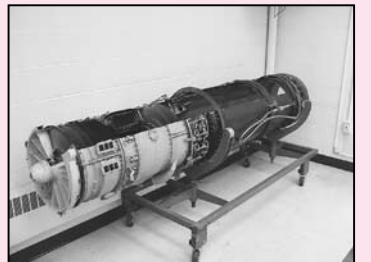
Chadwick Whirligig Mdl. 10 Calibrator/Trainer

Ignitor Box Training Board Aircraft Elect Training Board

Good Selection of Training Slides and Instructional Videos

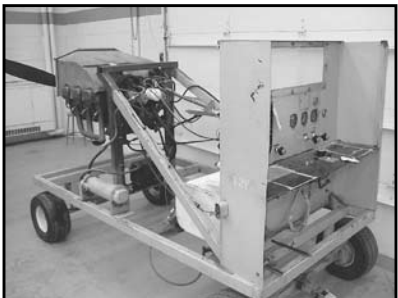


Curtis Wright R-3350 Cutaway Engine w/Prop and Rotating Elect. Motor

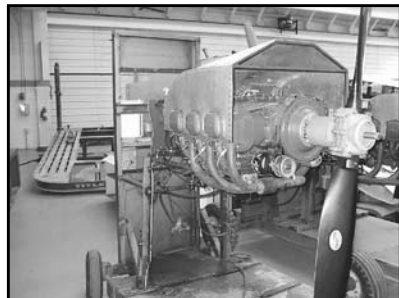


Turbine Engine Cutaway on Stand
Westinghouse Turbine Engine Cutaway on Stand

★ RECIP. and RADIAL ENGINE CORES ★



(3 Ea.) Lyc. 0-540 Engine Cores w/All Accys. Cont. GTSIO-520G Engine Core
(2 Ea.) Cont. 470 Engine Cores

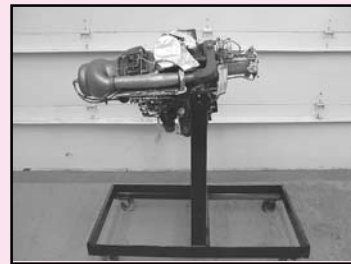


Lyc. TIO540-A2B Engine Cores
Cont. IO-470-VO Engine Cores



Continental W670-240 Radial Engine

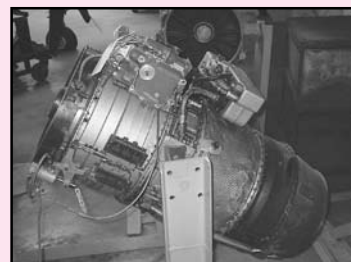
★ TURBINE ENGINES ★



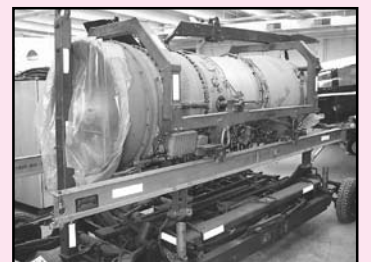
Allison T63-A700 Engine on Stand
Westinghouse J34-WE-48 Engine on Run-Up Stand



(5 Ea.) Westinghouse J34-36A Engines in P2-V Neptune Nacelles on Carts (Most w/Hard Card Logs)



(3 Ea.) GE J85-GE-7 Engines
Garrett GTC-85-37-2 APU on Test Stand
Allison TF41-A1B Turbine Engine on Maintenance Stand



Allison TF41-A1B Turbine Engine on Transport Cart
J-65-W7D Turbo Jet Engine on Transport Cart
(2 Ea.) Allison T-63 Shipping Cans

★ WHEEL and BRAKE INV. ★

Various Wheels 5" and 6"
Goodyear Multi Disc Brake Assys.

Goodrich 21-1/2 x 3-1/2 Expander Brake Assy.

Several Brake Pucks and Linings
Several Master Cylinders

★ LANDING GEARS and INV. ★

(3 Ea.) Piper Retractable MLG Assy.
Cherokee MLG Assy.
(4 Ea.) Piper and Misc. Nose Forks
(2 Ea.) Beech L/G Box Assys.
Beech L/G Motor
Beech Retractable Rod
Bonanza MLG and Wheel Assy.
Early Bonanza L/G Trunions and Legs

Prestolite and Misc. L/G Hyd. Power Pak
Piper Nose Gear Trunion
Cardinal Nose Gear Steering Collar
(2 Ea.) Cessna Spring Gear Assys.
(3 Ea.) Sikorsky Nose Strut Assys.
Mooney L/G Braces and Inv.
Scott Tail Wheel

★ CYLINDER CORE ★

(3 Ea.) Lyc. 320/360 Cylinders
(4 Ea.) Lyc. 235 Cylinders
(3 Ea.) H2AD Cylinder
(10 Ea.) 540-J2BD Cylinders

(18 Ea.) E Series Cylinders
(2 Ea.) Cont. 470 and 520 Cylinders
(3 Ea.) 65/0200 Cylinders
W670 Cylinder

★ RECIP. ENGINE INV. ★

(2 Ea.) Starter Ring Gears
Lyc. H2AD Case w/Crank
(2 Ea.) Lyc. 540 Cases
Lyc. 4 Cyl. Case
Lyc. Oil Sumps
Cont. Oil Pan

(14 Ea.) Lyc. and Cont. Camshafts

Lycoming and Cont. Engine Inv. to Include Oil Pumps, Connecting Rods, Push Rods, Push Tubes, Internal Gears, Pistons, Bearings, Through Bolts, Intake, Tappets, Counterweights, Rocker Box Covers, Rocker Arms, Intakes, Several Pistons, Engine Valves.

(12 Ea.) 4 and 6 Cyl. Camshafts
Radial Engine Baffling, Rocker Box Covers and Inv.
Engine Gasket Board

★ PROPELLERS and INV. ★



Sensenich 80" Wood Prop
Sensenich 62" 4-Blade Wood Test Club
Sensenich 4-Blade Wood Test Club Prop
Hamilton Standard 43D50 3-Bladed Prop
(10 Ea.) Hartzell Constant Speed Props
Wood Prop
Large Wood Prop Hub
(4 Ea.) Hartzell 3-Blade Prop Ham. Std. Prop
Beech Electromatic Prop



(4 Ea.) Fixed Pitch Props
(3 Ea.) Prop Blades
Hamilton Standard Prop Inv.
Prop Spacers, Hubs, Clamps, Springs, Domes
Prop De-Ice Rings

★ ACCESSORIES and INV. ★

(2 Ea.) Bendix Starter Generators P/N 30B58-3
Lear Siegler Mdl. 23046 and 8013C Starter Generators (Disassembled)
Lear Siegler Starter/Generator Mdl. 2381-023
(2 Ea.) Airesearch Air Starters Mdl. ATS25 and ATS50
(5 Ea.) 12 and 24 Volt Starters
(32 Ea.) 12 and 24 Volt Alternators
(3 Ea.) MA3A Carbs.
(5 Ea.) MA4-5 Carbs.
(5 Ea.) RSA-5 Fuel Injection Servos
(6 Ea.) RSA-10 Fuel Injection Servos
(2 Ea.) Fuel Injection Throttle Bodies
(15 Ea.) Fuel Injection Dividers
Cont. Fuel Injection Pumps
(8 Ea.) Bendix Dual Magnetos
(15 Ea.) Bendix 6 Cyl. Magnetos
(3 Ea.) Bendix 1200 Series Magnetos
(8 Ea.) Slick 4 Cyl. Magnetos
(12 Ea.) Slick 6 Cyl. Magnetos
(5 Ea.) Eisemann and Misc. Magneto Cores
Good Selection of Slick and Bendix Magneto Housings, Armatures, Harnesses, Gears, Snap Couplings, Distributor Blocks, Hardware, Etc.
(8 Ea.) Prop Governors
(10 Ea.) 12 and 24 Volt Generators
(10 Ea.) NAR 6B Carburetors
NAR 4B Carburetor

(5 Ea.) PS5C Pressure Carbs.
(45+) Tach. Generators
(7 Ea.) Oil Coolers
Several Wet Vac. Pumps
Dry Vac. Pumps
(6 Ea.) Fuel Selector Switches
(9 Ea.) Garrett and Solar Turbochargers
Garrett Turbo Controller and Waste Gate
(12 Ea.) Boost Pumps to Include Lear, Thompson and Pesco
(29 Ea.) Mechanical Fuel Pumps
(7 Ea.) Jack and Heinz E4 Starters
(4 Ea.) Large Radial Engine Carburetors
Several Fuel Sending Units
(18 Ea.) Thompson and Pesco Engine Driven Fuel Pumps
(10 Ea.) Hyd. Pumps
(12 Ea.) Southwind and Janitrol Heaters
Linear Actuators
Accumulators
(2 Ea.) Flap Motors
Delco Bushings, Armatures, Field Coils, Hardware, Etc.
(10 Ea.) Starter Drives
Carb. and Fuel Injection Inv. to Include Float Bowls, Housings, Gaskets, Needles, Throttle Arms, Floats, Shafts, O/H Kits and Hardware.
Starter Nose Housings
Several Actuator Motors
Disassembled Starter, Generator and Alternator Inv.

STARMAN BROS. AIRLINE SERVICES, INC.
9000 NW 15TH STREET • MIAMI, FL 33172
(305) 477-6865

STARMAN BROS. AUCTIONS INC.
1240 Royal Drive • Papillion, NE 68046-2082
(402) 992-1933
www.starmanauctions.com

★ ★ ★ HELICOPTER INV. ★ ★ ★

(2 Ea.) Bell M/R Transmission and Mast. Assy. P/N 212-040-001-39
 (2 Ea.) Sets of Bell Helicopter Ground Handling Wheels
 Hughes 269 T/R and Transmission Tools
 Bell 206 Swash Plate and Misc. Inv.
 Bell 206 T/R Blade
 (1 Set) ERA Aviation Helicopter Auxiliary Fuel Tanks 70 Gal. P/N 41228-200

New Bell 205 Firewall Panel
 Bell Helicopter Environmental Control Unit
 Eastern Cargo Hook
 Hughes 369A Stabilizer Fin
 Janitrol Tail Pipe Heat Exchanger P/N 204-072-263
 Small Helicopter Ground Handling Wheels
 Bell Misc. Instruments, Valves, Elect Inv., Hoses and Controllers

★ AIRFRAME and MISC. INV. ★

Cessna 150 Fuselage N-4376U
 (8 Ea.) Cessna, Piper and Beech Control Surfaces
 (15 Ea.) Fabric Control Surfaces
 (5 Ea.) Cessna, Rockwell and Piper Rudders
 (2 Ea.) King Air Heated Windshield
 (5 Ea.) Engine Mounts
 (9 Ea.) Fuel and Oil Tanks

(7 Ea.) Mufflers Turbo Transition
 Exhaust Pipes and Couplings
 Throttle Quadrant
 Misc. Actuators and Motors
 Engine Control Cables
 (2 Ea.) Jet Engine Tail Cones
 Air Boxes

★ ★ TURBINE ENGINE INV. ★ ★

PT-6 Engine Inv. to Include Blades, Bearings, Filters, Discs, Probes, Rings, Stators
 Allison 250 Inv. to Include Turbine and Compressor Wheels, Nozzle Shields, Gear Shafts
 Turbine Fuel Nozzles
 Turbine Engine Blades, Burner Cans, Filters, Housings, Stators and Various Other Internal Parts
 (4 Ea.) Ignitor Boxes



★ ★ ★ INSTRUMENTS and AVIONICS ★ ★ ★

(55+) Instruments to Include Vertical Speed, Exhaust Temp., Air Temp., Oil Temp, Fuel Qty., Fuel Flow, Turn and Banks, PSI Tach., Airspeed, Gyros, Compass, Battery Temp., Amp Meters, Battery Temp., Percent RPM, Fuel Flow, Etc.
 Global GNS-500A Nav. Unit
 KN65A DME

★ ★ ★ ELECTRICAL INV. ★ ★ ★

(5 Ea.) Landing Lights
 (10 Ea.) Voltage Regulators
 Instrument Lights and Panels
 Nav. Lights

Electrical Inv. to Include Cannon Plugs, Reverse Current Relays, Solenoids, Elect. Panels, Controllers, Wire, Etc.

★ ★ ★ HARDWARE ★ ★ ★

Hardware to Include Turn Buckles, AN Nuts, Nut Plate, AN Fittings, Adel Clamps, Screws, AN Bolts, Cherry Rivets, AN Solid Rivets, Hose Clamps and MS Packing and Seals

★ ★ ★ MISCELLANEOUS ★ ★ ★

(46 Ea.) Cases of Turbine Engine Oil
 (6 Ea.) Cases of 5606 Hyd. Oil

(4 Ea.) Oxygen Bottles
 (16 Ea.) Nicad Batteries
 Good Selection of Misc. Hardware

★ ★ ★ MANUALS, MICROFICHE and READERS ★ ★ ★



Overhaul/Parts Manuals to Include Piper, Navajo, Apache, Aztec, Cherokee, Twin Comanche, Cheyenne, Beech 18, F90 King Air, Baron, Bonanza, King Air 100, Skipper, Bell 206, Bell 47, Cessna 150, 172, 177, 180, 210, 206, 310, 337, 207, 320, 401, 402, 411, Jetstream 31, Jetstream HP137, Beech Jet 400, Gulfstream 1, DC-9, Falcon 10, PT-6, Garrett 331, TFE 731, Rolls Royce, Lyc. 235, 290, 320, 360 and 540, Cont. W/670, 65/200, E225, TSIO-360, 0-470, 0-520, GTSIO520, Pratt R-1340, R-2000, Slick Mag, Woodward Prop Gov., Prestolite, Fars and Advisory Circulars, Misc. Microfiche, J-34, J-85, Prop and Various Accessory Manuals. (Approximately 200 Manuals)



Falcon 10 Service Manuals, Various Aircraft Wiring Manuals
 (3 Ea.) Microfiche Readers

AUCTIONEER'S NOTE: Hawkeye Community College has closed their A&P School and have contracted with Starman Bros. Auctions to liquidate all aircraft, equipment, tools, engines and inventory at public auction. There are some good aircraft equipment training aids, etc., being sold. If you are an A&P school, a supplier, or just need inventory, equipment or aircraft, do not miss this auction.

Everything sells "AS IS, WHERE IS," with no warranties implied or expressed. Neither the auctioneer nor owners shall be liable for any incorrect description, fault, or defect. Everything positively sells to the highest bidder. Payment must be made in full day of sale. No property removed until settled for. Auctioneer not responsible for accidents or stolen property. All counts are approximate.

TERMS: Cash, Certified Funds, or Company Check ONLY if accompanied by Bank Letter of Guarantee!! NO EXCEPTIONS! Wire Transfers will be accepted with a 20% nonrefundable deposit day of sale. We also accept MasterCard and Visa. A 3% Buyer's Premium will apply to this auction. If payment is Cash, Check, Certified Funds or Wire Transfer, the 3% Buyer's Premium will be waived.



FLYING AIRCRAFT TERMS

Must be Cash or Certified Funds. A company check will be accepted ONLY with an IRREVOCABLE Letter of Credit from your bank. If a Wire Transfer or Bank Draft is used, we need a 20% NONREFUNDABLE DEPOSIT Day of Sale via one of the above mentioned forms.

Do Not Miss This Auction!

STARMAN BROS. AIRLINE SERVICES, INC.
 9000 NW 15TH STREET ■ MIAMI, FL 33172
 (305) 477-6865

STARMAN BROS. AUCTIONS INC.
 1240 Royal Drive ■ Papillion, NE 68046-2082
 (402) 592-1933

www.starmanauctions.com

