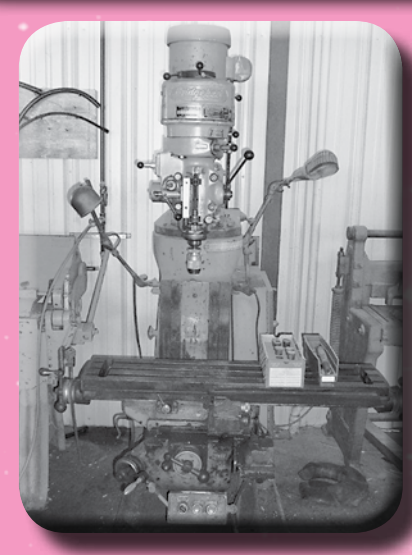
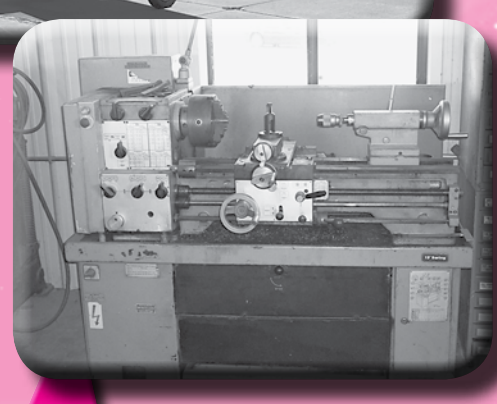


AVIATION AUCTION

Saturday ~ October 8th, 2011
Starting at 9:00 A.M.

Consolidation Auction for
JET AIR, INC.
58 IL Route 164 ~ Galesburg, Illinois
(Located on the Galesburg Municipal Airport)



SALE SITE NUMBER:
Steve Starman
(402) 681-6456
or Scott Moore
(402) 681-3652

**ABSOLUTE
AUCTION!**

PRSR FIRST CLASS
 U.S. POSTAGE
PAID
 MAIL U.S.A.

First Class

AIRLINE CONNECTIONS
 The Closest Commercial Airport is Quad City International Airport in Moline, IL (approximately 30 Miles). All Private Aircraft can Land at Galesburg, the Identifier is KGBG.

HOTELS

Country Inn & Suites
 2284 Promenade Court
 Galesburg, IL
 (309) 344-4444

Fairfield Inn
 901 West Carl Sandburg Drive
 Galesburg, IL
 (309) 344-1911

Comfort Inn
 907 West Carl Sandburg Drive
 Galesburg, IL
 (309) 344-5445



STARMAN BROS. AUCTIONS INC.
 1240 Royal Drive ~ Papillion, NE 68046
 4901 E Falcon Drive ~ Mesa, AZ 85215
 (402) 592-1933 ~ (480) 396-0380

STARMAN BROS. AUCTIONS INC.
 1240 Royal Drive • Papillion, NE 68046
 (402) 592-1933
 www.starmanauctions.com
 Return Service Requested

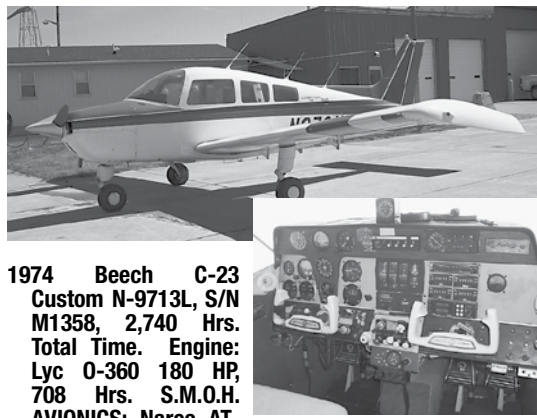


Check Out Our Web Site...
www.starmanauctions.com

★★★ FLYING AIRCRAFT ★★★



1946 Cessna 140 N-89848, S/N 8897, 2,145 Hrs. Total Time. Engine: Cont C-90-12, 1,158 Hrs S.M.O.H., 125 Hrs. S.T.O.P. Prop: McCauley, 125 Hrs. Since Reconditioned AVIONICS: Escort II Nav Com. Aircraft Has Metal Wings, Fresh Annual, All AD Notes Current, Cleveland Wheels & Brakes. All Log Books Since New. Some Damage History in '61. Totally Repaired & Documented.



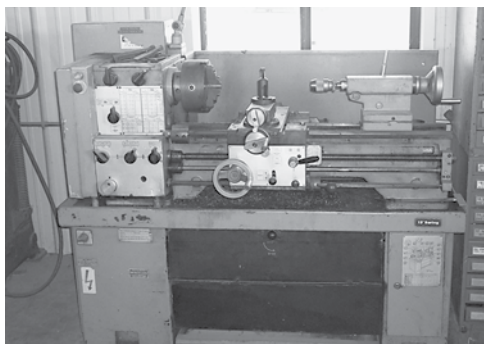
1974 Beech C-23 Custom N-9713L, S/N M1358, 2,740 Hrs. Total Time. Engine: Lyc O-360 180 HP, 708 Hrs. S.M.O.H. AVIONICS: Narco AT-50A Transponder, Dual Terra TN-200 Nav, Dual Terra TX-720 Coms, Terra TMA-230 Audio Panel, Narco 190 DME, King KR-86 ADF, Apollo 604 Loran, Ameri-King ELT, Century I Autopilot. Aircraft is a 6-1/2 Inside & Out. Has Droop Tips, New Tires & Tanis Engine Heater. Also Has Fresh Annual.

★★★ RAMP EQUIPMENT ★★★

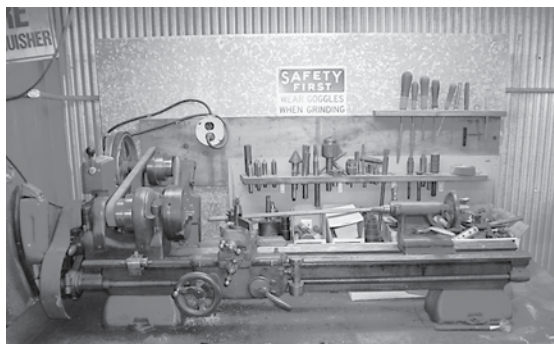


Clark Forklift Mdl C500-20, 2,000 LB Capacity, 18' Triple Stage Mast, Propane, Hard Rubber Tires
Cushman Electric Golf Cart w/Charger
Herman Nelson BT400 400,000 BTU Pre-Heater
Herman Nelson BT400-41 316,000 BTU Pre-Heater
Various Maintenance Ladder 5', 10' & 12'

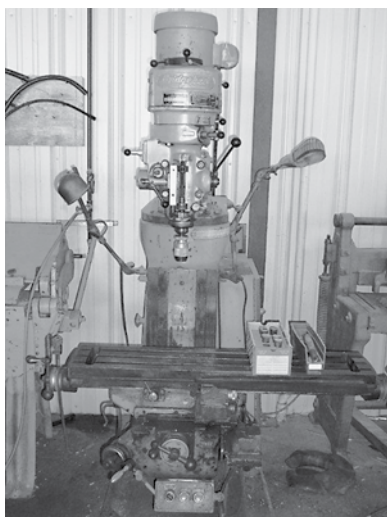
★★★ SHOP EQUIPMENT ★★★



Harrison Turning Lathe Mdl M300RI, 13" Swing, 36" Bed, (3) Jaw Chuck, 3-Phase Motor, 40-1800 Spindle Speed, 1-1/2 Hollow Spindle w/Misc Tooling



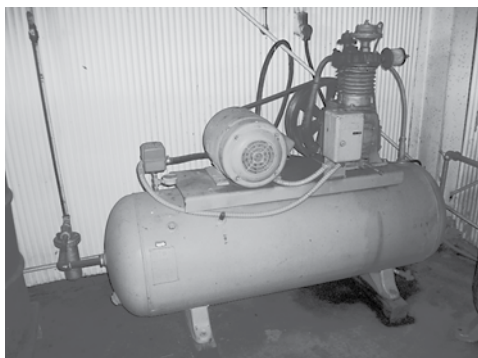
Southbend Bench Top Lathe C9-10JR, 36" Bed, 9" Swing, 3/4" Hollow Spindle, 1/3 HP Motor w/Variou Gears, Center Chucks & Tooling



Bridgeport Series 1 Vertical Milling Machine, 1 HP, 3-Phase Motor, 80-2720 Spindle Speed, 9 x 42" 3-Slot Bed, 16" Vertical Travel, 24" Horizontal



Bead Blast Cabinet 38" L x 24" D x 20" T
Pexto 31" Sheet Metal Sheer
(3) 55 Gallon Barrel Stands
Several Mechanics Creepers



2-Stage Air Compressor, 5 HP, 110 Volt Motor
(3) Sets of 24" Aircraft Tripod Jacks
Misc Jack Pads
Shop Build 5606 Hydraulic Mule, 115 Volt Single Phase, 1 HP
Clarke TB-24 Self Propelled Floor Scrubber, Battery Powered w/Charger
Werner 1500 Lb Engine Hoist
1/2 Ton Pneumatic Chain Hoist
Magnflux Mdl H05 Portable Magnetic Test Unit Power Supply 110 Volt, 1 Phase, 500 Amp Max Output
Robinair Mdl 17660 Refrigerant Recovery System w/Compressor Unit
A/C Recharge Cart w/Pump
Norco 12 Ton Hydraulic H-Frame Press
8" Pedestal Grinder
Champion Mdl 800 Spark Plug Cleaner/Tester
Champion Spark Plug Vibrator/Cleaner
Champion Spark Plug Gap Tools
Champion Plug Thread Tool
Goodyear Wheel Balancer
Tire Bead Breaker
Branson 1210 Ultrasonic Parts Cleaner
Pico Mdl 400B Crimp Master Pneumatic Crimper
Sweeney Mdl 7045 Torque Tester 0-1000 FT/LBS
CDI DPT1200 Torque Multiplier w/Digital Display
MAC BCH6006 Battery Charger 6/12/24 Volt w/280 Amp Start
Associated 6030 6/12 Volt Battery Tester
Roadrunner Aircraft Scales, 3-Piece Set, No Readout
Scott SM-200 Placard Stencil Machine
Power-Kraft 230 Amp Arc Welder
(4) Fairbanks Platform Scales

★★★ FUEL TRUCKS & VEHICLES ★★★



1974 Ford F-500 AV Gas Truck, 6 Cyl Engine, 4-Speed Trans., 1,200 Gallon Steel Tank, Single Pump Meter & Reel, Velcom Filters Changed in 8/2011.



Ford AV Gas Truck, V-8 Engine, 4-Speed Trans., 2,200 Gallon Steel Tank, Dual Pump, Meters & Reels, Filters Changed in 8/2011.



1995 Ford F-250 XLT Pickup, 4x4, 7.3 Power Stroke Diesel Engine, 5-Speed Trans., AM/FM, A/C, Power Windows, Locks & Seats, Extended Cab
1987 Dodge Aries, 89,000 Miles, A/C, Cruise
16' Tandem Axle Car Trailer
1998 Dodge Truck Engine Core
Misc. Fuel Truck Inv

★★★ HAND TOOLS ★★★

New Black & Decker Vibro Centric Valve Seat Driver Mdl 6320
New Kent-Moore Master Orifice Tool 646953A
Aircraft Dynamics/Robo Impacts 1/2" Drive, 28 Volt Impact Wrench w/Sockets P/N 29701
Bendix High Tension Lead Tester
Swench 3/4" Drive Reversible Ratchet Drive, 800 Lbs Max Torque
Slick Harness Tool Kit
TimeRite Indicator
Magneto Timing Box
Mdl TP-102 Timing Indicator
Differential Cylinder Compression Gauge
Individual Compression Test Set
(2) Snap-On Mac Torque Wrenches
Cherry G15DB Pneumatic Rivet Puller
GBP704 Pneumatic Cherry Rivet Puller
Cherry G-36 Hand Rivet Pullers
Huck HK-150A Hand Rivet Puller
Mack RG-1000 Rivet Puller
Hand Rivet Squeezer/Dimpler
Misc Cherry Pulling Heads
Pop Rivet Guns
Rivnut Pullers
(2) Pneumatic Rivet Gun
Bucking Bars & Rivet Sets
Ramset JobMaster Powder Driver
Brown & Sharpe 19" Height Gauge
14" Height Gauge
Fosdick Depth Gauge
Brown & Sharp Magnetic Dial Indicator Base
Hole Finders
Standard No. 5 Bore Gauge
Bore Gauge
Pin Standards
Several Sets of Standard Blocks
Go-No-Go Gauge Set
OTC Hydraulic Puller Set
Cal Tools Stud Remover
(3) Pneumatic Drills
Pneumatic Inline Sander
Hartzell Prop Gauge
Prop Tach 2545 Digital Tach
(2) Prop Protractors
Snap On MT952 Volt/Amp Meter
Snap On Armature Growlers
Snap On Armature Cutter
Patton Large Seal Puller/Install Kit
Lempco 6-Pc Reamer Set
Valve Spring Compressors
Speed Air Paint Pot & Gun
Micropress Tool
Tubing Flaring Tools
Tap & Die Set
Helicoil Tools
Gear Pullers
C-Clamps
Clecros

★ TEST SETS & BALANCING TOOLS ★

Barfield 2548H Fuel Qty Test Set
 Howell H302 Turbine Engine Test Set
 Airborne 343 Pneumatic Test Set
 C & D Airmotive Heater DK Test Set PDT285A
 (2) Military Electric Thermometer Test Sets
 (3) Marvel Mdl 7HEL053 Balancing Kits
 (2) Marvel 7HEL065 Tail Rotor Balancing Kit
 New Marvel 74052 Prop Balancing Kit

★ CESSNA CITATION INVENTORY ★

(Set) Citation 500 Mains & Nose Gear Assys w/Cycle Tags
 Citation 500 Air Cycle Machine
 Citation 550 Current Sensor
 Citation 501 F/F Transmitter
 Turbine Igniter Box
 Citation 500 Pilot/Co-Pilot Seats
 Citation Interior Inv
 Citation 2 Refreshment Center
 Hamilton Standard Cabin Temp Controller
 Used Citation Inventory to Include Outflow Valves, Actuators, Shut Off Valves, Elect Motors, Fittings, Hyd Valves, Annunciator & Selector Panels, Avionics & Instruments, Hoses & Tubes, Flap Motors, Engine Harness, Gear Doors, L/G Scissors & Brackets, Elevator, Wiring Harness, Drag Brace, Glare Shield, Bleed Air Ducts, Lord Mounts, Alcohol Reservoir, Windshield Bleed Air Valve, Hyd Balance Relief Valve, Main Gear Actuator, Nose Gear Retract Actuator, Skydrol Valves, Rotary Shut-Off Valves, L/G Blow Down Bottle, Hamilton Standard By-Pass Valves, Flap Drive Gear Box, Fire Bottles, Flow Packs, De-Ice Valve, Windshield, Brake Assy, Skid Warning Sensors, Etc.

LANDING GEAR, WHEEL, BRAKE & EXHAUST

(3) 6.00-6 Cleveland Wheel & Tire Assys
 Cleveland 7.00-8 Wheel
 (4) 5" & 6" Wheels
 (6) New Cleveland 6" & 10" Brake Disks
 New Cleveland Brake Calipers 30-66F
 New Cleveland Brake Linings & Pucks
 New Goodyear Rotor Brake Calipers
 Goodyear Wheel & Brake Assy
 C-210 Steering Shafts & Braces
 Cessna 206/210 Shimmy Dampner Rod
 New Cessna Shimmy Dampner 9880008-2
 (2) Piper Shimmy Dampners
 Brake Master Cylinders
 Brake Caliper Pistons
 Queen Air & Misc Beech Lower L/G Legs
 Piper Nose Fork
 Piper L/G Swivels
 Beech L/G Box
 Beech Inboard & Outboard Gear Doors
 Several Beech MLG & Retract Rods
 Scott Tail Wheel
 Squat Switches
 Scott Tail Wheel Steering Spring
 Comanche Muffler & Exhaust System
 (4) King Air Turbine Exhaust Stacks
 T-206 Exhaust System, A/R
 Cessna Turbo 210 Muffler Shrouds
 C-172 Mufflers
 Cessna 300/400 Series Exhaust Inv
 Radial Engine Exhaust
 Good Selection of Exhaust & Mufflers
 New Exhaust Clamps

BEECH TRAVEL AIR FUSELAGES & AIRFRAME INV.

(2) Beech Travel Air Fuselages
 (3) Beech Travel Air Wings
 Approx. (2) Sets of Travel Air Control Surfaces
 Travel Air Landing Gears & Inv
 Gear Doors, Cowling, Various other Travel Air Inv

★ ★ PROPELLERS & INVENTORY ★ ★

O/H McCauley Fixed Pitch Prop HCM6948
 McCauley 3-Blade Prop B3D32C407C, Damaged
 McCauley Bonanza 3-Blade Prop 3A32C76-S-Q, Damaged
 Hartzell 3-Blade Prop PHC-C3YF-2UF, Damaged
 3-Blade Prop Hub
 McCauley Prop Blades
 Prop Accumulators
 Prop Synchronizers
 Prop Slip Rings & De-Ice Brushes

★ ★ NEW & USED AIRFRAME INVENTORY ★ ★

C-303 R/H Flap, Repaired w/Tag
 New Side Glass 002-430000-118 & -117
 New Bonanza Hinged Window Glass & Vent Window
 New Cessna Windshields
 (5) New Cessna Fuel Sending Units
 (4) New Kollsman Pitot Static Tubes 369D-012
 New Great Lakes C-1700 Hat Rack Plastic
 New Lord Mounts
 Beech Inflatable Door Seal Kit
 New C-210 Flap Hinge Ribs
 Micro Aerodynamics 401, 402, 414 Vortex Generator Kit
 New Control Cables
 New Carburetor Heat Box Door
 (3) New Cessna Glare Shields
 New Cessna Interior Door Pull Handles
 New Cessna Interior Plastic
 Late Model 172/182 Plastic
 New Cessna Strut Cuffs
 New Cessna, Piper & Beech Small Airframe Parts
 Hinge Stock & Hinge Pin
 New Seat Rail
 New Cessna Seatbelt
 Several Seat Hydro Locks
 B-55 Baron Seats
 King Air 200 Beverage Dispensers
 King Air Door Seal
 King Air Cabin Door (Needs Repair)
 New Springs, Bushings, Bearings, Hyd Lines, Ribs, Seat
 Roller Brackets, Fuel Screens, Etc.
 New Cessna & Beech Decal & Placard Kits
 Approx. 2 Full Sets of Beech TravelAir Control Surfaces
 C-172 Elevator
 Caravan Trim Tabs
 C-210 L/H Flap
 Late Model C-182 Flaps, Needs Bottom Skin, No Damage
 C-90 Pilot Heated Window, Needs Repair
 (2) Cessna Trim Actuators 1260238-4, 2533047-1
 C-401 De-Ice Valve, B Checked
 Cessna 310 & Various Cessna Fuel Selector Valves

C-182C Rudder Peddle, Firewall & Misc
 C-172 Top Cowl
 Late Model C-182 Center Cowl Panel
 C-310 Nose Bowls
 C-414 Nose Bowl Halves
 C-172 Upper Nose Bowl
 Strut Cuffs, Stabilizer & Control Surface Tips
 Good Selection of Air Stair Door Cables
 C-210 Header Tank
 New Piper & Cessna Gaskets & Seal, Pulleys, Brackets, Clamps
 New Bracket Air Filters
 Good Selection of Scott Oxygen Inv.
 Several Oxygen Masks & Overhead Panels
 New Door Seal
 New Donaldson Air Filters
 Beech Control Yokes
 (2) Engine Fire Bottles
 Good Selection of Scat Hose, High & Low Pressure Hose, Engine Hoses, Etc.
 Beech & Piper Stringers
 Good Selection of Cessna Interior Plastic
 Engine Baffling
 Several Oxygen Tanks
 Cherokee Engine Mount
 Cherokee Wing Tanks
 Cessna Interior Headliner Rail
 Rosen Sun Visors
 Cessna Glare Shields
 New Cessna 172 Cover
 Used Control Cables
 Fuel Sending Units
 Good Selection of 2 & 3 Blade Spinners & Backing Plates
 Cessna Wing Tips & Wheel Pants
 Beech Wing Bolts
 Beech 18 Inventory to Include Fuel Transmitter, Wheel Half, Baffling, Transducers & Valves, Flex Joints, Risers & Exhaust Gaskets, Airframe Panels, Vertical Fin De-Ice Boot
 Bonanza Wing Tips With Strobes

★ ★ ENGINE ACCESSORIES & INVENTORY ★ ★

MA3-SPA Carburetor
 RSA-5 Fuel Injection Servo
 (2) Cont IO-520M Fuel Injection System w/Throttle Body/Controller, Fuel Injection Pump & Flow Divider, O/H & Core
 O/H Cont Fuel Injection Throttle Body 629703-2
 New Elect Fuel Pump
 Cont Fuel Injection Pumps
 Fuel Injection Controllers
 Cont Fuel Injection Spiders
 Cont Fuel Injection Nozzles
 Woodward Prop Governor O/H 1112683-H
 Garrett Turbo Charger 641672-1, O/H No Tags
 New Garrett Poppet Valve C482002
 New Garrett Turbo Charger Waste Gate C165006-0401
 Garrett Turbo Waste Gate
 (3) Garrett Turbo Charger Cores P/N 406610
 (3) Turbo Controllers
 1200 Series Magneto, O/H
 O/H 4 Cyl Bendix Magnetos
 2 New Slick Magnetos
 Bendix Dual Magneto
 (12) Bendix & Slick Magneto Cores
 Magneto Drive Gears
 Magneto Adapters
 New Slick & Bendix Mag Repair Inv
 New Right Angle Starter Drive Clutch Spring

New Starter Drives
 (2) New Alternators
 (7) Alternator Cores
 (2) 100 Amp Alternator Cores
 (9) Starters O/H & Cores
 Alternator Drive Gears
 (3) Generator Cores
 Precise Flight Stand-by Vacuum System Kit P/N SVS
 Cont Right Angle Starter Drive
 Tach Generators
 (4) Dukes Fuel Pumps
 (4) Elect Fuel Pumps
 (3) Prop Governors
 (14) Vacuum Pumps
 Oil Coolers
 Pesco Hyd Pump
 Airborne Vac Valves
 Solenoid Valves
 (2) Starter Ring Gears
 (2) A/C Pumps
 Southwind Heater P/N 8259GL-1
 Heater Fuel Pumps
 Heater Igniter
 Heater Blower Motors & Fans
 Accessory Mounts

★ ★ ENGINE INV., CASES & CYLINDERS ★ ★

IO-360-B1B Camshaft, O/H
 IO-360-B1B O/H Rocker Arms, Connecting Rods, Tappets
 New Lyc O-235 Piston Rings & Gasket Kit
 GTSIO-520H Crankshaft, O/H
 GTSIO-520H Rods, O/H
 New Cont Pistons & Pins
 New Cont Bushings
 New Cont Rod Bearings
 New Cont Counterweights
 New Lyc Counterweight Pins
 New Piston Rings
 O/H Cont Internal Gears
 New Lyc Valve Guides
 New Cont Valves
 New Oil Lines & Hoses
 New Lyc & Cont Gaskets
 New Cont & Lyc Small Parts Inv
 O/H O-200 Cylinder

(2) O/H O-470 Cylinders
 (40+) Cont 520 Cylinder Cores some with valves
 Lyc 360 Case
 (4) Cont 520 Front Alt Crankcases
 GTSIO-520H Gears
 Lyc IO-360-B1B Engine Inventory to Include Rods, Pistons, Rocker Box Covers, Sump, Accy Case
 Cont TSIO-520 Counterweights
 New Lyc Oil Seals
 C-172 Tanis Engine Heater
 Used Engine Inventory to Include Rocker Arms, Push Rod Housings, Pistons, Thru Bolts, Tappets & Lifters, Valve Springs, Intake, Oil Pump Housings, Primer Lines, Rods, Crossover Tubes, Gears, Valve Guides, Oil Filter Adapters, Cross-Over Tubes, Dipstick Housings, Vernatherms, Etc.
 Red Tagged PT-6 Blades & Misc, For School Use

★ ★ DISASSEMBLED O-200A ENGINE ★ ★

Disassembled Cont O-200A Engine Core Complete

★ AVIONICS & INSTRUMENTS ★

King KLN-89B GPS
 King KDM-700 DME
 King KDR-510 Data Receiver
 King KDF-805 w/Selector
 King KNS-80
 Primus 20 Weather Radar Indicator & Receiver
 Bendix 4000504 Radar Antennas
 RCA AVQ-95 Transponder
 Narco AT-50 Transponder
 Fairchild GA-100 Cockpit Voice Recorder
 KX-170 Nav/Coms
 ARC 300 Nav Coms
 Collins 51-RV2 VOR/ILS Receiver
 Collins ALT-50/860F-2 Altimeter Radio
 KN-72 w/Harness
 KN-75 Glideslope
 Collins 328A-3G Slaving Accy
 (2) Sperry VG-14 Vertical Gyros
 Collins TDR-90
 Collins PWC-150 Converter

Misc Flux Valves
 Autopilot Servos & Controllers
 ARC AS-875 Altitude Sensors
 Narco AR-850 Altitude Reporters
 Audio Switching Panels
 Cabin Alternator Controller
 ELT's
 ELT Install Kit
 Large Selection of Radio Racks
 HSI P/N 2592920-444
 Several Antennas
 (100+) O/H & Core Instruments to Include Gyros, Manifold Pressure, Air Speed, Dual Tach, Fuel Flow, Cluster Gauges, Tachs, Turn & Bank, Radio Altimeter, Cabin Altimeter, Voltmeters, Mode Control Panels, Altimeters, Vertical Speed, Course Indicators King KI-214, King KI-204, DME Ind., Fan Speed Ind., EGT's, Anti-Ice, OAT, Hobbs, Etc.



★★★ MANUALS & MISC. ★★★

Maintenance Manuals to Include B-18, 55 Baron, 56 Baron, 90 Series, 33 & 35, Cessna 310, Ranger Engine, Cessna 207, 182, 414, 421, 150, 337, 210, 205, Piper PA-32-260, PA-23, PA-28, Twin Comanche, PA-22, Beech A-36, V-35

Good Selection of Lockers & Cabinets
 Good Selection of Shop Benches & Shelving
 Parts Carts
 Several Fire Extinguishers

PAYMENT TERMS:

Cash, Certified Funds, or Company Check ONLY if accompanied by Bank Letter of Guarantee!! NO EXCEPTIONS! Wire Transfers will be accepted with a 20% non-refundable deposit day of sale in one of the forms listed above. We also accept MasterCard and Visa with a 3% Buyers Premium applicable.



PROXY BIDS:

If you are unable to attend this auction we will bid on your behalf. For more info visit our web site at www.starmanauctions.com and click on Upcoming Auctions and scroll down to the Proxy Bid Section. Complete form and fax to (402) 592-2327 or call Steve at (402) 681-6456.

FLYING AIRCRAFT TERMS:

Must Be Cash, or Certified Funds. A company check will be accepted ONLY with an IRREVOCABLE Letter of Credit From Your Bank. If a wire Transfer or bank Draft is used we need a 20% NON-REFUNDABLE DEPOSIT Day of Sale via one of the above mentioned forms.

LOADING & REMOVAL:

Once an item is sold the winning bidder is responsible for its removal. Any cost responsibility and risk of removal of purchases remain with the buyer. Removal may begin after payment in full and must be completed by the posted deadlines. NO EXCEPTIONS OR EXTENSIONS! There may be various trucking companies on site to arrange for transportation. However, it will be the buyer's responsibility to arrange their own trucking.

★ AVIONIC TEST EQUIPMENT ★

Barfield Pitot Static Test Set 1811H-161
 Barfield Pitot Static Test Set 1811G-121
 Omni Air Pitot Static Test Set OA7175
 MEC-720A Transponder Test Set
 MEC-190 Nav/Com Test Set
 MEC-820 DME Test Set
 King KTS-156 Test Set
 Trygon DC Power Supply 26-30VDC 0-20 Amp
 Toshiba Mdl EPS-104 DC Power Supply
 Arc Autopilot Field Test Set H42A



★ ELECTRICAL & HARDWARE ★

New Over-Voltage Sensor
 New Lamar Voltage Regulator
 New Grimes Nav Light
 PC17-3 Static Inverter
 (3) Landing Lights
 Whelen Strobe
 (4) Strobe Power Supplies
 Cessna Flap Motor
 400 Series Flap Motor
 Grimes Power Supplies

Beacon Inv
 (2) Cessna Windshield Heat Inverters
 Wiper Motor
 Rocker Switches
 Several Sealed Beam Lights
 Grounding Straps
 Hardware to Include Cherry Rivets, Solid Rivets, AN Fittings, Adel Clamps, Stainless Screws, Cherry Locks, Rivnuts, Self Tapping Screws, Etc.

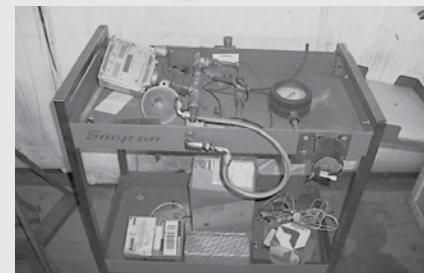
★★★ PORSCHE 930 AIR COOLED ENGINE INV. & TEST SETS ★★★



Good Selection of Porsche 6-Cyl Air Cooled Engine Inventory to Include Cylinder Heads & Sleeves, Pistons, Valves, Camshafts, Etc.



Sun SGA 9000 Exhaust Analyzer for Porsche 930 Engines



Fuel Flow Test & Calibration Bench for Porsche 930 Series Engines
 Test Cell/Dynamometer Oil System for Porsche 930 Engines
 Factory Supplied Engine Overhaul Stand for Porsche 930 Engines

AUCTIONEER'S NOTE

Harrel Timmons, President of Jet Air, Inc. is doing some consolidation of three different FBO's and has contracted with Starman Bros. Auctions, Inc. to liquidate Equipment & Inventory that is Surplus to the Ongoing Needs of Those FBO's. This Auction offers a Good Selection of General Aviation Inventory as well as Several Citation Rotables & Some Good Pieces of Shop Equipment.

Everything sells "AS IS, WHERE IS" with no warranties implied or expressed. Neither the auctioneer nor owners shall be liable for any incorrect description, fault, or defect. Everything positively sells to the highest bidder. Payment must be made in full day of sale. No property removed until settled for. Auctioneer is not responsible for accidents or stolen property. All counts are approximate. Announcements made day of sale takes precedence over all printed material.



STARMAN BROS. AUCTIONS INC.

1240 Royal Drive ~ Papillion, NE 68046 ~ 4901 E Falcon Drive ~ Mesa, AZ 85215
 (402) 592-1933 ~ (480) 396-0380

