

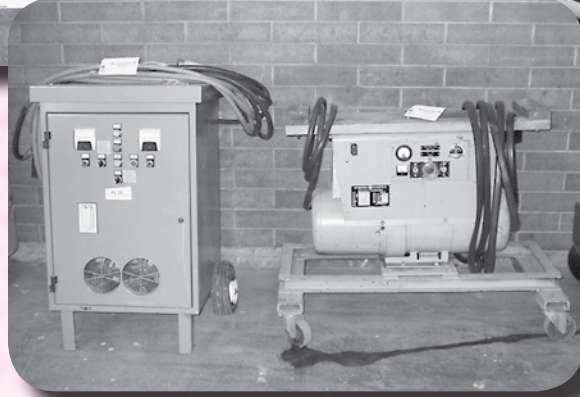
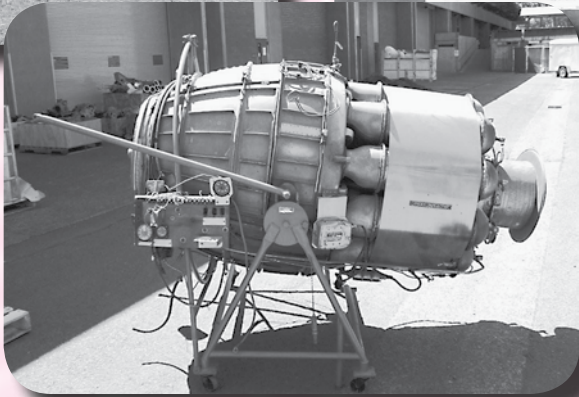
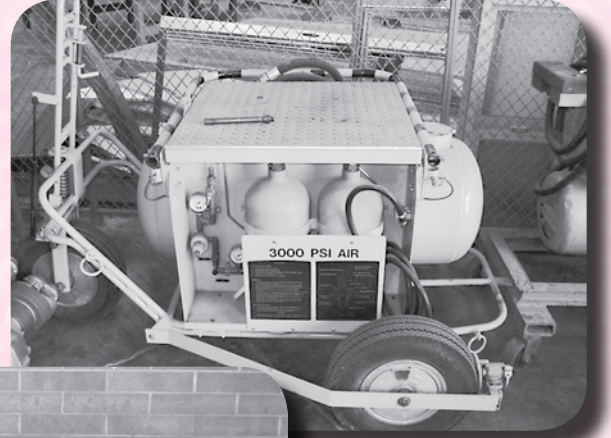
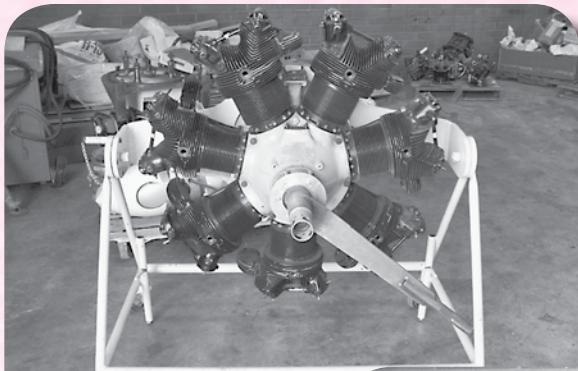
AVIATION AUCTION

SATURDAY ~ September 19th, 2009
Starting at 9:00 A.M.

**LANE COMMUNITY COLLEGE A&P SCHOOL SURPLUS
& DEL HENDRICKSON AVIATION ESTATE**
Auction being held at: Lane Community College
4000 E 30th Ave ~ Eugene, Oregon

ABSOLUTE AUCTION

Directions: From I-5 South, take 30th Ave. Exit #189, Stay Right at stop light along access road approx. 1/2 mile to next light, turn Right on 30th Ave. to the next light. Lane Community College is on left.



SALE SITE PHONE: Scott Moore (402) 681-3652 or
Steve Starman (402) 681-6456

AIRLINE CONNECTIONS

Various Commuter Airlines into Eugene, OR. Most all major Airlines into Portland, OR; Rental cars are available at both locations.

EUGENE & SURROUNDING AREA HOTELS:

Extended Stay
520 Harlow Rd.
Springfield, OR
(541) 741-3908

Holiday Inn Express
3480 Hutton St.
Springfield, OR
(877) 863-4780

Red Lion Hotel
205 Coburg Rd.
Eugene, OR
(541) 342-5201

Comfort Suites
3060 Brackenfern Rd.
Eugene, OR
(541) 343-7000

Motel 6
3690 Glenwood Dr.
(541) 687-2395

Crossland
520 Harlow Rd.
Springfield, OR
(541) 741-3908

Comfort Suites
969 Kruse Way
Springfield, OR
(541) 746-5359

Shilo Inn
3350 Gateway St.
Springfield, OR
(541) 747-0332

Quality Inn & Suites
3550 Gateway St.
Springfield, OR
(541) 726-9266

Courtyard
3443 Hutton St.
Springfield, OR
(541) 726-2121

Quality Inn
3550 Harlow Rd.
Springfield, OR
(541) 726-9266

Note: Make hotel reservations early! There is a College Football game in Eugene on September 19th so rooms may be limited on that day. In addition to this list, you may find several other rooms on the internet.

PRSRT FIRST CLASS
U.S. POSTAGE
PAID
MAIL U.S.A.

First Class

STARMAN BROS.
AUCTIONS INC.

1240 Royal Drive • Papillion, NE 68046-2082
(402) 592-1933

www.starmanauctions.com

Return Service Requested

STARMAN BROS.
AUCTIONS INC.

1240 Royal Drive • Papillion, NE 68046-2082
(402) 592-1933

www.starmanauctions.com

STARMAN BROS.
AIRLINE SERVICES, INC.

★★★ SHOP EQUIPMENT ★★★



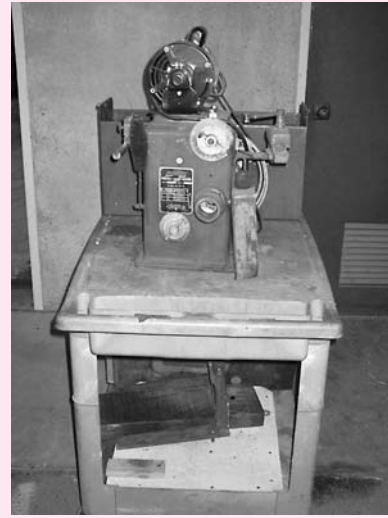
Central Machinery Mdl T5980 Bench Top Machine Center; 22" Bed; 10" Swing; 3 Jaw Chuck; Multi Speed Drill Press
Blue M Mdl PDM-256C-1 Electric Oven; 650° F Max; 240 V; 1 Phase; 2'x2"x1'9"x25'H; All Inside Dimensions



Sioux Valve Set Driver w/Stones



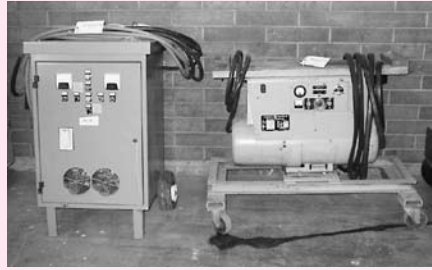
Military Turbine Engine Compressor/Washer



Sunnen Mdl LB550 Honing Machine



- (2) 36" 5 Ton Tripod Jacks
- (3) 24" 5 Ton Tripod Jacks
- Power Tow Mdl 70 Power Tow Bar
- Power Tow Mdl 40EZ Power Tow Bar
- Lug-Bug Mdl 500 Power Tow Bar
- (5) Roll-A-Round Parts Carts
- Montgomery Ward 1/2 HP Portable Air Compressor
- (2) Portable Air Compressors
- Graco CS-5 Turbine Paint Mask Respirator
- (2) OHAUS Triple Beam Scales
- (2) Fairbanks Platform Scales
- 1 1/2 Ton Floor Jack
- (3) Bottle Jacks
- Several Tool Boxes
- Central Brake Bleeder
- 5 Gal Parts Washer
- Engine Build Stands
- Central Portable Blast Pot
- (2) Portable Air Tanks
- Several Tow Bars
- Shop Vac Hanger Sweeper
- FM 10 Gal Portable Sand Blaster
- Shop Vac 6 Gal 3 HP Wet Dry Vac
- Propane Heater
- Halogen Shop Light
- Lg Selection of Extension Cords
- Automotive Jack Stands
- (2) 6' & 12' Aluminum Step Ladders



- GE rectifier Mdl 6PD265AA1; Input 220/440/; 3 Phase; 60 Cyl; Output 14-35 V; 500 Amp
- (2) Power Products Mdl AP-1500 Portable Ground Power Unit; Kawasaki FA130 Gas Engine; 28 V; 1000 Amp; DC
- Kohler Gasoline Generator on Stand; 60 HZ; 1 Phase; 120 V; 2500 Watts
- PCTI Rectifier
- Lyc A-3 GPU; 28 V; 22 KW w/4 Cyl Lyc Engine
- APS Systems Military Battery powered Aircraft Mover; Mdl APS TUG

Electo Mdl PS-1000 DC Power Supply

- Jet 14" Bench Top Drill Press
- Jet 2 Arbor Press
- AC Spark Plug Cleaner Tester
- (2) Small Spark Plugs Cleaners
- Exide 24 V Battery Charger
- Ward AC-DC Arc Welder
- (2) Shop Built Hyd Mules
- Wilton Vice
- Car Ramps
- Several 5 Gal Gas Cans
- Stihl Chain Saw
- Mac Mechanics Stool



Graymills Clean-O-Matic Parts Washer

- IRAC Small Parts Cleaning Booth
- Aerol Strut Pump
- NAPA 2 Ton Engine Hoist
- B-1 Maintenance Stairs
- Maintenance Stairs
- Sun 620 Generator/Alt Tester
- Craftsman 10 Drawer Top Tool Box
- Mac 5 Drawer Side Hanging Tool Box
- Oxygen Acetylene Regulators

★★★ HAND TOOLS ★★★



- Kearney Mdl 8-3 Cable Swagger; Cap 5/32-3/8
- (12+) Cylinder Base Wrenches
- Piston Ring Compressors
- Eastern Timing Ind
- Timing Lights
- BT-3005 Universal Carb Tuning Tool Kit
- Magneto Condenser Tester
- (3) Eastern Mag Synchronizer
- (3) Eastern Differential Compression Testers
- Valve Spring Tester
- Counterweight Tool
- Cont Starter Drive Bearing Puller
- Mitutoyo Inside Micrometer
- Valve Guide & Misc Reamers
- OTC Bushing Driver
- Cold Cylinder Tester
- Snap-On Compression Tester
- Valve Spring Compressor
- Slick Mag Tool
- Eastern Cable Tester
- Cylinder Ball Hones
- Dial Ind Magnetic Base
- (3) Sun Mdl VAT-26 Volt-Amp Testers
- Pneumatic Orbital Sander
- (3) Waxcoa & Misc Orbital Waxer
- 4 1/2" Angle Grinder

- Instrument Panel Hole Saw
- Pneumatic Sander
- Pneumatic Rivet Hammer
- (4) Rivet Tools
- (2) Rivet Cutters
- Cherry Hand Rivet Puller
- Parker Rolo-Flair Tubing Flairer
- Clecos & Pliers
- US Tools Hand Rivet Squeezer
- Pittsburgh Blind Hole Bearing Puller Set
- (2) Devilbis Paint Guns
- Makita Cordless Drills
- Chicago Electric Sheet Metal Shear
- Central Pneumatic Rivet Puller
- Kent-Moore BT33 Cable Tensiometer
- Pneumatic Stapler
- RamSet Power Anchor Gun
- Makita Heat Gun
- MecTronics 800 Series Ignition Tester
- Electric Jitterbug Sander
- Black & Decker Router
- Brake Rivet Tool
- Roto Zip Spiral Saw
- Miter Box & Saw
- Exhaust Expander Tool
- Magnum Propane Torch
- Levels
- Black & Decker Drill
- Milling Tree
- Several Grease Guns
- Hand Tools to include Box End Wrenches; Hammers; Files; Pipe Wrenches; Chisels; Helicoil Tools; Snips; Dzus Tools; Spark Plug; Caddie; Hole Saws; Sockets; Tubing Cutters; Drill Bits; Tape Measure; Snap Ring Pliers; Allen Wrenches; Screw Drivers; Pliers; Wood Saws; Hand Planers

★★★ NEW, OH & AR ENGINE INV. ★★★



- New Cont & Lyc Engine Inv to include Piston Rings; Gaskets; Hardware; Bearings; Piston Pin Plugs; Lord Mounts; Bushings; Valve Guides; Lifters; Valves; Valve Springs; Gears
- (OH) GTSIO 520 Inv to include (2) Crank Shafts; Connecting Rods; Thru Bolts; Counterweights; Pistons; Gears
- New GTSIO Rings & Piston Pins
- (OH) O-200 Rods; Some Gears; M10 Bearing Set; (OH) Gasket Set; Ring Set
- Lyc Hyd Tappets; P/N 78290 (OH)
- Lyc Tappet Bodies; P/N 72877 (Reconditioned)
- Lyc Cam Shaft; P/N 76097 (Reconditioned)
- Cont O-200 Camshaft (OH)
- Cont 631795 Cam (Rep)
- (18) 4 & 6 Cyl Cam Shaft & Cores
- New GTSIO Fuel Injection Nozzles
- New GTSIO 520 Rod Bolts
- (10+) New Cont Vermatherms
- New O-200 Ring Set
- (6) New Lyc Pistons; SL75089
- New Lyc 320/360 Rocker Box Gaskets
- (2) Starter Ring Gears
- (8) Cont 65/85 Accy Cases
- (10) Misc Cont Accy Cases
- (4) Lyc Accy Cases
- Cont Crossover Tubes
- (6) Cont Sumps
- (3) Cont E-Series Sumps
- GTSIO Oil Pan
- 0-300 Five Bolt Sump
- Franklin Connecting Rods; Misc Gears & Accy Case
- Franklin Accy Cases
- Cont O-200 Kidney Sump
- Piper Malibu Alt Bracket
- (4) 65/85 Kidney Sumps
- Used Cont & Lyc Engine Inv to include Pistons; Piston Pins; Bearings; Gears; Tapper & Lifters; Hardware; Hoses; Valves; Accy Mounts; Intakes; Valve Springs; Guides; Rocker Box Covers; Oil Pump Housings; Camshafts 65/200 Intake

★★★ AVIONICS & INSTRUMENTS ★★★

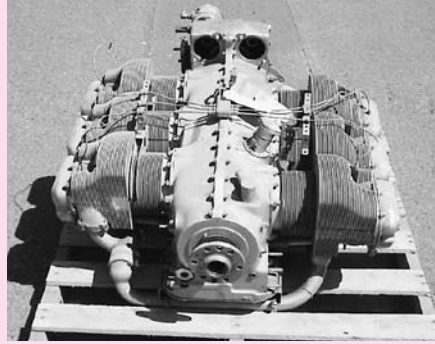
- Avionics Inv to include ELT Batteries; Antennas; King KA-445; King KXP-750; Radio Racks
- Bendix Auto Pilot Servos
- Military Airdata Test Set
- Pitot Tube
- (20) Altimeters; Turn & Banks; EGT; Clock; Artificial Horizon Tachometer; Course Ind; Compass
- (7) David Clark; Telex & Misc Head Sets



★ ★ ★ RECIP, TURBINE & JET ENGINES ★ ★ ★



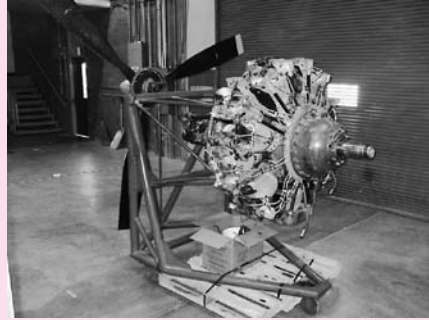
(13) Cont A65 Engine Cores on Build Stands (Tapered & Flange Shafts)
(3) Cont O-470M Engine Cores



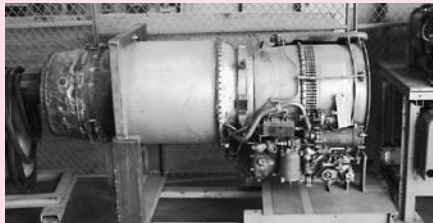
Cont IO-470 Engine Core
Franklin 6A4-165-B3 Engine Core on Mount



Cont R-670-4 Radial Engine on Stand
Disassembled R-985 Engine Minus Crankshaft



P&W 1830 Engine on Stand
Lyc 4 Cyl GPU Engine
Solar Mdl 1006170 Titan Turbine Engine on Stand
Boeing Mdl T-50-B04 Turbine Engine on Stand



J60P-5B Turbine Engine on Stand



GE Mdl I-16 Jet Engine (Very Rare)



Allison T-33 Turbine Engine

(2) GE J-34-WE-48 Engines on Stands

GE J-34-WE-22 Engine on Run-up Stands

GE J-34-WE-34 Engine on Stand

T-53 Engine (Not Complete)

(6) Allison T-63 Shipping Cans

★ ★ ★ TH-55 HELICOPTER & HELI INV. ★ ★ ★

1968 Hughes TH-55/269A Helicopter, S/N 780904, (Mostly Complete) (Missing Radios & Some Instruments); Military Log Reflects 4,267 A.F.T.T. at last entry; Lycoming HIO-360-B1A Engine 879 Hrs. S.M.O.H.; M/R Blades-526 Hrs, 452 Hrs., & 76 Hrs. TSN; T/R Blades-2,306 & 2,403 Hrs. TSN; M/R Trans-1,473 Hrs. TSN; T/R Gearbox-723 Hrs. TSO. Has original Certificate of Completion from Hughes Aircraft.



New OH-6 Struts; P/N 369A2001
Bell 204 M/R Head Assy
Bell 204 M/R Mast
Bell 47 M/R Hub & Grip Assy
(2) Bell 47 Wood Main Rotor Blades

Bell 47 Light Mounts; 47-706-047-6
(2) Hiller M/R Head Assy
Hiller Tail Rotor Blades
AS 350 M/R Hub
Helicopter Belly Type Mover

★ ★ ★ ELECTRICAL & HARDWARE ★ ★ ★

Electrical to include Miniature Lights; Sealed Beams; Regulators; Switches; Canon Plugs; Nav Lights; Wire Shrink Tube; Nav Light Lenses
Landing Light
Wing Strobe Lights
Lg Selection of Electrical Wire
Zefronics G225EN Generator Controller
Beacon Inv

Hardware to include Cherry Rivnuts; Solid Rivets; AN Fittings; Dzus Fasteners; Cam-Locs; Adel Clamps; Roll Pins; Hi-Line Terminal Kits; Cotter Pins; Anfms Nuts; Castle Nuts; Fiber Nuts; Bolts; Screws; Washers
Dzus Fasteners
Good Selection of Engine Hardware

★ LANDING GEAR, WHEEL BRAKE & EXHAUST ★

(11) C-310 Upper L/G Trunnions
310 & Misc L/G Scissors
(2) Cessna 310 L/G Motors
400 Series Lower L/G Leg L/G Scissors
Cessna 310 L/G Box
C-310 Torque Tubes
6.5-10 Wheel & Tire Assys

(2) 6.50-10 Tires
New 8.00 Tail Wheel Tire
New 6.50-10 Tires
8" Wheel Assy's
(7) Mufflers & Misc
Twin Cessna Exhaust
New 5.00-5 Tire Tube

★ ★ ★ AIRFRAME INVENTORY ★ ★ ★

Piper Cherokee PA-28-161 Fuselage on Main Gear; N-8154X; (No Control Surfaces)
C-182 Skylane II Top Cowl
Cherokee Top Cowl
(2) Cessna-200 Series Side Cowls
(5) Cessna & Piper Wing Tips
Cessna Nose Bowls
(5) Cessna Lift Struts
(10) Piper Ragwing Lift Struts
Steel Wheel Pants

C-120 Fuel Tank
(7) Cessna & Misc Fuel Tanks
Several Spinner Backing Plates & De-Ice Slinger Rings
(8) Spinners
(3) Piper Control Yokes
(14) Piper & Misc Front & Rear Seats
Misc Spinners & Ribs
Seat Belts

Cessna & Piper Airframe to include Battery Box; Spinners; Air Boxes; Ribs; Wheel Pants; Air Filters; Oil Tank; Engine Mounts; Interior Fabric; Seat Hose; Fuel Caps; Bearings; Brake Linings; Interior Inv Kits
Cessna 310 & Misc; Doublers; Brackets; Braces; Interior Panels; Tubes; Augmenter; Tubes; Push Pull Rods; 310 Nose Wheel Scrapers

★ ★ ★ PROPELLERS ★ ★ ★

(2) McCauley 3 Bladed Props; Mdl 3AE34C92
Ham Std Mdl 53C51-23, 3 Bladed Prop
McCauley Constant Speed Prop
McCauley Design 1A90 Fixed Pitch Prop; 85 HP Max
McCauley Design 1C172 Fixed Pitch Prop
Hartzell Constant Speed Prop
(4) Misc Prop Blades
(3) Ham Std Prop Domes
Ham Std Blade

★ ★ ★ ACCESSORIES ★ ★ ★

(5) MA3SPA Carbs
PSD-5C Carb
(8) PD12 & PD9 Radial Engine Carbs
(2) Cont Fuel Inj Servos
(2) Bendix 6 Cyl Mag Core
Cont Fuel Inj Pump
(6) Slick 4 & 6 Cyl Mag Cores
(3) 1200 Series Mags
New Bendix Mag Distributor Blocks; Coils
1200 Series Mag Harness Cores
(7) Starter Cores
(OH) 100 Amp Alternator

(3) Alt Cores
(5) Generator Cores
(2) Garrett Turbo Chargers
(2) Garrett Turbo Controllers
(14) Oil Cooler Cores
Oil Cooler Backing Plate
(17) Vac Pump Cores
(4) Tach Generators
(2) GTSIO Right Angle Starter Drives
(2) Prop Gov Cores
Fuel Boost Pump
Weldon Fuel Boost Pump
Chandler Evans TA-7 FCU

★ ★ ★ WINGS & CONTROL SURFACES ★ ★ ★

C-150 R/H Wing
C-172 R/H Wing
(3) C-182 Elevator
C-172 Elevator

C-172 Horizontal Stab
C-206 Vertical Stab
(4) C-150/172 Flaps
C-310 Elevator

(75+) Cessna & Piper Damaged Control Surfaces
(2) C-421 Ailerons
Cherokee Elevator Assy
Aztec Horizontal Stab & Elevator Assy

(22) Piper & Misc Fabric Control Surfaces & Stabilizers
C-140 Elevator
C-140 Horizontal Stab
Misc Cherokee & Cessna Damaged Wings

STAR MAN BROS. AUCTIONS INC.
1240 Royal Drive • Papillion, NE 68046-2082
(402) 592-1933
www.starmanauctions.com

STAR MAN BROS. AIRLINE SERVICES, INC.

★★★ CRANK CASES, CRANK SHAFTS & CYLINDERS ★★★

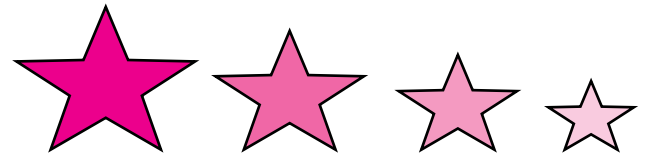
Cont O-200 Crankshaft M10 (OH)
 OH Cont O-300 Crank Shaft M-10
 65/200 Tapered Crank Shaft
 Cont C-125 Case w/Crank
 (20) Cont & Lyc 4 & 6 Cyl Crank Shaft Cores
 (2) GTSIO-520H Crank Case (ECI Rep)
 GTSIO 520 Case Core
 (5) Cont O-125/300 Crank Cases
 (2) Cont O-200 Cases
 Cont E-Series Case
 (10) Cont 65/85 Cases
 (3) Cont 6 Cyl Crank Cases
 (6) Lyc 4 Cyl Crank Cases

Lyc 540 Case
 (50) Lyc O-235/290 & Misc Cyl Cores
 (12) Lyc 540 Cyl Cores
 (3) 540 Narrow Deck Cyl Cores
 (30) Lyc 320/360 Cyl Cores
 (OH) O-200 Cyl
 (23) Cont 65/85 Cyls
 (39) 85/200/300 Cyl Cores
 (19) Cont 470/520 Cyl Cores
 (22) GTSIO Cyl Cores
 (24) E-Series Cylinders
 (3) Franklin Cyl Cores



★★★ MANUALS ★★★

(200+) Manuals to include C-421; 310; 182; 210; Aerostar; PT-6; Janitrol Heater; Beech Baron; Merlin; Cherokee Six; Navajo; King Avionic & Service Bulletins; Bellanca; C-180; Mooney; Bendix Mag; Continental; Lycoming; Garrett; Turbine & Misc Accys
 269/300 Maintenance Manuals
 Hydraulic Systems Training Aid



★★★ AUCTIONEER'S NOTE ★★★

Lane Community College has downsized their A&P School and by doing so have generated a large amount of surplus. Included in the College inventory, we have added the Estate of Del Hendrickson. Between the two, this auction offers a good line of Shop Equipment & Tools, as well as a very good selection of Engines & Engine Inventory.

Everything sells "AS IS, WHERE IS" with no warranties implied or expressed. Neither the auctioneer nor owners shall be liable for any incorrect description, fault, or defect. Everything positively sells to the highest bidder. Payment must be made in full day of sale. No property removed until settled for. Auctioneer is not responsible for accidents or stolen property. All counts are approximate. Announcements made day of sale takes precedence over all printed material.

★★★ PAYMENT TERMS ★★★

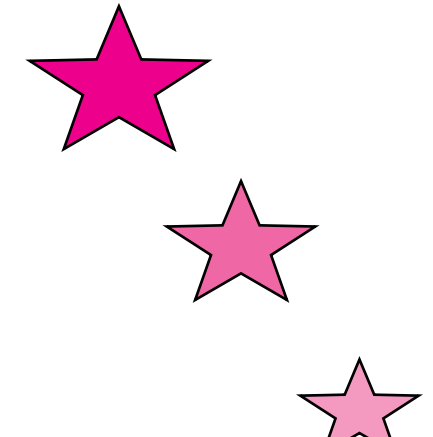
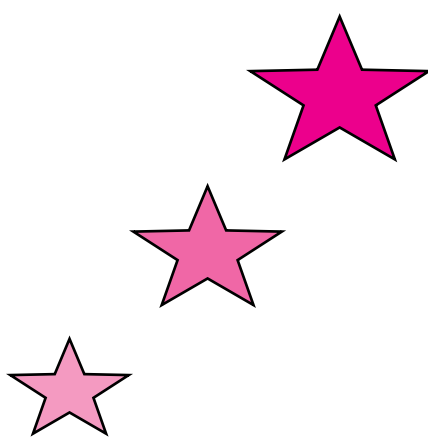
Cash, Certified Funds, or Company Check ONLY if accompanied by Bank Letter of Guarantee!! NO EXCEPTIONS! Wire Transfers will be accepted with a 20% non-refundable deposit day of sale in one of the forms listed above. We also accept MasterCard and Visa with an additional 3% Buyers Premium applicable.

★★★ PROXY BIDS ★★★

If you are unable to attend this auction we will bid on your behalf. For more info visit our web site at www.starmanauctions.com and click on Upcoming Auctions and scroll down to the Proxy Bid Section. Complete form and fax to (402) 592-2327 or call Steve at (402) 681-6456.

★★★ LOADING & REMOVAL ★★★

Once an item is sold the winning bidder is responsible for its removal. Any cost responsibility and risk of removal of purchases remain with the buyer. Removal may begin after payment in full and must be completed by the posted deadlines. NO EXCEPTIONS OR EXTENSIONS! There may be various trucking companies on site to arrange for transportation. However, it will be the buyer's responsibility to arrange their own trucking.



STARARMAN BROS. AUCTIONS INC.

1240 Royal Drive ■ Papillion, NE 68046-2082
 (402) 592-1933 Fax: (402) 592-2327

STARARMAN BROS. AIRLINE SERVICES, INC.