

ABSOLUTE AUCTION!

AVIATION

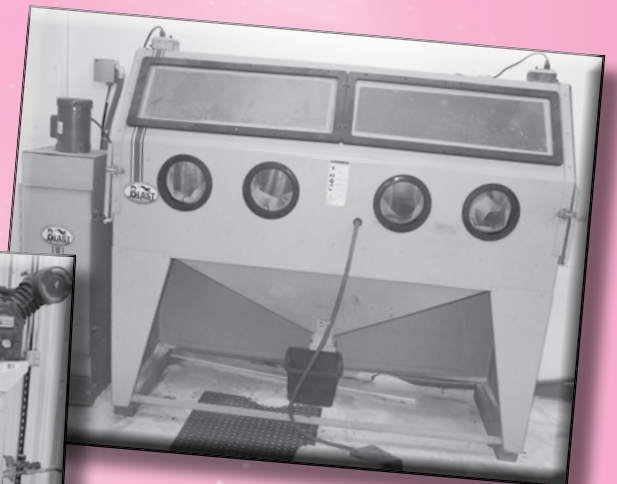
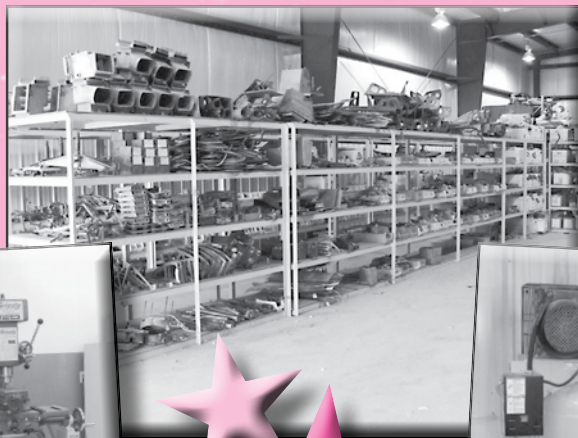
AUCTION

*Major T-6
& Warbird
Auction!!*

October 16TH & 17TH, 2009 • Starting at 9:00 A.M. BOTH DAYS!

MIDWEST TEXANS • 1365 North Warren Road • Huntington, Indiana
Located on the Huntington Municipal Airport

DIRECTIONS: From Fort Wayne, take I-69 South 12 miles to US-224 Exit 86. Turn right on US-224 West for 7 miles to Warren Road, turn left. Auction is located 1/2 mile on left.



★ ★ ★ ★ ★ ★ ★ ★ ★ ★
**A 5% BUYER'S PREMIUM
APPLIES TO ALL PURCHASES
AT THIS AUCTION.**

SALE SITE PHONE
Scott Moore (402) 681-3652

PRSR FIRST CLASS
U.S. POSTAGE
PAID
MAIL U.S.A.

First Class

SALE ORDER

FRIDAY, OCTOBER 16TH

Landing Gear and Inventory, Wheel and Brake Inventory, Exhaust, Project Aircraft, Wings, Control Surfaces, All Airframe Inventory, Avionics, Instruments, Propellers and Inventory, Electrical and Hardware.

SATURDAY, OCTOBER 17TH

Engine and Accessory Inventory, T-6 Jigs and Fixtures, Shop Equipment and Hand Tools, and Miscellaneous.
At 1:00 P.M. we will sell the Flying Aircraft, Forklift and Vehicle.

AIRLINE CONNECTIONS

Most major airlines into Fort Wayne International Airport. Private aircraft can land at Huntington Municipal Airport, record locator is HHG. Rental cars are available at both locations.

AUCTIONEER'S NOTE

Midwest Texans has decided to close their doors after several years of restoring award-winning T-6 Project rebuilds. They have therefore contracted with Starman Bros. Auctions to sell their assets at public auction. This auction will include a very large selection of T-6 and Warbird Inventory. Also included is a Flying Beech 58 Baron, Several T-6 Project Aircraft, and a good selection of late model Shop Equipment and Tooling. Don't miss this auction!!

Everything sells "AS IS, WHERE IS" with no warranties implied or expressed. Neither the auctioneer nor owners shall be liable for any incorrect description, fault, or defect. Everything positively sells to the highest bidder. Payment must be made in full day of sale. No property removed until settled for. Auctioneer is not responsible for accidents or stolen property. All counts are approximate. Announcements made day of sale take precedence over all printed material.

HOTELS

Holiday Inn Express 2205 N. Jefferson Street Huntington, IN 46750 260-356-3434	Super 8 2801 Guilford Street Huntington, IN 46750 260-358-8888	Northview Inn & Suites 2820 Hotel Avenue Huntington, IN 46750 260-359-9000
---	---	---

There are more hotels located 10 miles away in Warren or 20 miles away in Fort Wayne.

★ ★ ★ ★ ★ ★ ★ ★ ★ ★
STARMAN BROS. AUCTIONS INC.
1240 Royal Drive • Papillion, NE 68046
(402) 592-1933 • FAX (402) 592-2327
www.starmanauctions.com

STARMAN BROS. AIRLINE SERVICES, INC.

Check Out Our Web Site...
www.starmanauctions.com

STARMAN BROS. AUCTIONS INC.

1240 Royal Drive • Papillion, NE 68046
(402) 592-1933 • FAX (402) 592-2327
www.starmanauctions.com

Return Service Requested

★★★ FLYING AIRCRAFT ★★★



**SELLS AT 1:00 P.M.
SUNDAY, OCTOBER 17TH**

1975 Beechcraft 58 Baron

N-4520S, S/N TH660, 7,563 Hrs. A.F.T.T., Cont. IO-520-C (Heavy Case) Engines R/H 1,408 Hrs. S.M.O.H., L/H 1,001 Hrs. S.M.O.H., 565 Hrs. S.T.O.H., Hartzell 3-Bladed PHC-J3YF-2UF Props, 1,307 Hrs. S.P.O.H.

Avionics: King KMA20 Audio Panel, Garmin GNS 430, King KNS80 Digital Nav. System, King KY196 Digital Com, King KT76A Transponder, King KR85 ADF, Century 4 Autopilot, WX-100 Stormscope, Alcor EGT, Cygnet Dual Yoke w/8-Day and Digital Clock, 4-Place Intercom.

Aircraft has D'Shannon Single Piece Windshield, Rosen Visors, Cargo Door and Net, Club Seating, Automatic Nose Baggage Door Hold Open, Leading Edge and Prop De-Ice Boots, Leather Interior. Aircraft has all logs and carry through spar. Inspection was done at last annual.



PROJECT AIRCRAFT

1943 North American SNJ-5 "TEXAN" Project

N-3643F Aircraft is mostly complete with Wings, Center Section, Control Surfaces, Landing Gear, Panels and original Instruments. This aircraft has original military logs and was one of the last SNJ's to fly in the Navy.

For complete detailed information on this project aircraft visit www.starmanauctions.com and click on upcoming auctions.

North American SNJ-5C Project

N-705AW, Bureau No. 90847 Tail Hook, A.F.T.T. 4,734 Hrs., Project consists of Tubular Section, Right Wing and Center Section, Landing Gear, Control Surfaces, Seats, Engine Mount, Canopy, Panels and Various small parts. Also has modified Tail Cone and Tail Hook Mounting Brackets. This is an actual 5C w/Military Logs and was never flown as a civilian aircraft.

North American SNJ-5 Project

N-43775, Bureau No. 43775, Project consists of Tubular Section, Right Wing, Tail, Landing Gear, Control Surfaces, Engine Mount, Canopy, Panels, Various small parts and Components. Has civilian logs w/Airworthiness Certificate.

North American SNJ-4 Project

N-709AW, Bureau No. 51643, A.F.T.T. 4,034 Hours, Project consists of Tubular Section, Tail, Landing Gear, Canopy, Panels, Various small parts and Components. Has Military Logs and was never flown as a civilian aircraft.

★★★ SHOP EQUIPMENT ★★★

Col-Met Up-Draft Paint Booth,
26' Long x 14' Wide x 9' Tall.
Sealed Lighting New in 2006



(2) Ingersoll-Rand 80 Gal.
Dual Stage Vertical Air
Compressor, 7.5 HP



Pro-Ultrasonic Mdl. PRO2624
Ultrasonic Cleaner w/Temp
Controller and 7-Day Programmer
Branson Mdl. B-220H Bench Top
Ultrasonic Cleaner
(2) Meyers 36" 3-Ton Tripod Jacks w/
Extensions
Avery 22" Bench Top Sheet Metal
Dimpler
Safety Kleen Mdl. 1055 Paint Gun
Washer



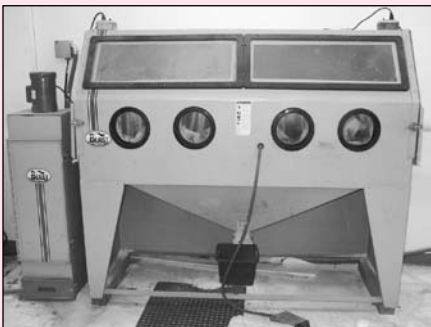
Teledyne Republic Mdl. 232P
Power Tube Flaring and
Beading Machine w/Dies.
Flaring Cap 1/8 thru 2",
Beading Cap 1/4" thru 1-1/2".
Rebuilt in 2008 by Midway
Fluid Co.



Grizzly Mdl. G3616 Vertical
Milling/Drilling Machine, 270
RPM- 2,950 RPM w/Power
Table
Safety Kleen Mdl. 709.3, 5 Gal.
Chemical Recycling Machine



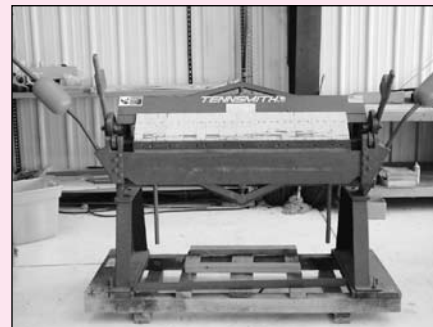
Millermatic Mdl. 175 Wire Feed
Welder, 230 Volt
Paint Shaker
Allegro Mdl. A-750 Respirator
Pump
Oxygen/Acetylene Torch w/
Regulators and Cart



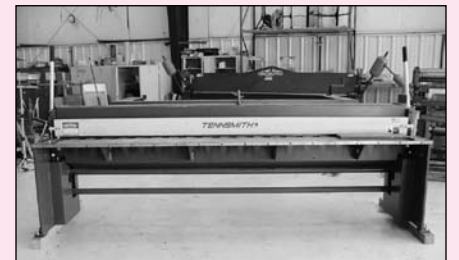
Skat Blast Dual Station Bead Blast
Cabinet, 27" Wide x 27" Tall x 6' Long w/
Reclaimer
48" Sheet Metal Brake
Grizzly 24" Bench Top Sheet Metal Brake
52" Sheet Metal Shear
Tennsmith Mdl. SR-48 48" Sheet Metal
Roller, 16 Gauge Mild Steel Cap.
Weld Tech Water Cooler
Delta Mdl. 70-200 Variable Speed Drill
Press
Dake Variable Speed Band Saw, 13" Throat
Clarke 4-1/2" Metal Cutoff Band Saw
Rockwell Mdl. 31-122, 12" Disc Sander
Palmgren 6" x 9" Belt/Disc Sander
Craftsman 4" x 36" Belt/Disc Sander
Delta Pedestal Grinder
Baldor 1/2 HP Pedestal Grinder
Ace 6 HP Pedestal Grinder
Milwaukee 14" Cutoff Saw
Craftsman 10" Compound Miter Saw
Nitrogen Bottle Cart w/Regulator
No. 2 Arbor Press
Parts Washer



Tennsmith Mdl. HB-121 10' Sheet Metal
Brake
3 Ton Floor Jack
Kingsley Mdl. KWH-6 Wire Marking
Machines w/Dies and Digital Readout
Kingsley Mdl. ATD-106 Wire Marking
Machine
Marsh Mdl. H 1/2 Stencil Cutting Machine
Diagraph 1/2" Stencil Cutting Machine
20 Ton H-Frame Press
P&G Portable Bead Blaster
(2) Jamco 55 Gal Drum Flammable
Cabinets
(2) Eagle PI-47 2-Door Flammable
Cabinets
(2) Eagle Rotary Top Hazmat Containment
Units
(6) Overnight Rag Cans
Oil Drain Container
Thoro-Matic Floor Polisher
A-frame Engine Hoist w/Electric Chain
Hoist
Welding Table
Welding Curtains



Tennsmith Mdl. U-48 48" Finger Brake



Tennsmith Mdl. SK-10 10' Sheet Metal
Shear, 20 Gauge Mild Steel Cap.



ATS Mdl. SPCT-
100 Spark Plug
Cleaner/Tester
Champion Spark
Plug Cleaner/
Vibrator
Oil Jak Mdl. MAV-1
Spark Plug
Vibrator Cleaner
(3) 4' and 6'
Stepladders
(2) 38" Shop Fans
Masking Tape/
Paper Stand
Halogen Paint
Lights
Several Sections
of Rivet Rack
and Metal Parts
Shelves



Miller Syncrowave 300 AC/DC
Arc Welding Power Source
200/460 Volts, Single Phase
w/Argon Attachment
Good Selection of 38" and 48"
Wide Pallet Racking



Zephyr Mdl. ZP-45 Hot Dimpler
36" Throat
Roll-A-Round Carts
Pallet Jack
T-6 Tow Bar
Several Shop Benches and
Tables

★★★ HAND TOOLS ★★★

AO Scientific 24" Flexible Boroscope
Magnaflux Black Light
Parker Exactol Mdl. 412 Tubing Bender
(2) Imperial Tubing Benders
Several Coil Type Tubing Benders
Parker Hand Bender Set
(4) Chicago Pneumatic Rivet Squeezers
(4) Whitney Rivet Squeezers
(2) Pneumatic Rivet Hammer
(2) Pneumatic Drills
MAC Pneumatic Sheet Metal Nibbler
(2) MAC Pneumatic Die Grinder
Blue Point Pneumatic Right Angle Drill

Blue Point Pneumatic Sander
C/P Pneumatic Polisher
MAC Paint Gun
Ace Heat Gun
Makita Cordless Drill
L-30 Force Gauge
Dillon AT520CGC Force Gauge
AC Spark Plug Gap Tool
(2) Strut Pumps
Craftsman 16 Gal., 6 HP, Wet/Dry Vac
5 Gal. Paint Pot
T-6 Rudder Protractor
R-4360 Timing Wheel

P&W Cylinder Base Wrenches
Several Spanner Wrenches
Valve Spring Compressor
Radial Engine Sockets
Jack Pads
Weller Soldering Station
Bench Vices
Hand Tools to include: Dead Blow
Hammers, C-Clamps, Bucking Bars, High
Speed Drill Bits, Files, Pliers, Rivet Sets,
Vice Grips, Clecos, Spark Plug Caddies,
Pneumatic Vacs, Air Hose, Extension
Cords, Etc.

★ FORKLIFT ★

Yale 7,000 Lb. Propane Forklift, Solid
Rubber Tires, 18' Triple Stage Mast

★ VEHICLE ★

1997 Cadillac Seville STS. V-8,
Automatic, Leather Interior, Heated
Power Seats, Power Moon Roof,
Power Windows, Cruise, Bose Stereo
w/CD Changer and Car Phone.

A 5% BUYER'S PREMIUM APPLIES TO ALL PURCHASES AT THIS AUCTION.

★ ★ ★ TOOL CABINETS and MISCELLANEOUS ★ ★ ★

Snap On 6'-22 Drawer Roll-A-Round Tool Cabinet
Knight 20 Drawer Mechanics Tool Box
Mop Buckets
55 Gallon Barrel Pumps
Besler AP-5 Still Picture Projector



**A 5% BUYER'S PREMIUM
APPLIES TO ALL PURCHASES
AT THIS AUCTION.**

★ ★ T-6 FIXTURES and STANDS ★ ★

Shop Built T-6 Hydraulic Actuator Test Stand
(2) T-6 Wing Jigs
T-6 Horizontal Stabilizer Repair Jig
T-6 Vertical Stabilizer Jig
T-6 Tail Cone Jig
(3) T-6 Roll-A-Round Fuselage Rebuild Stand
(5) Cabin/Fuselage Carts
(5) Wing Racks
(2) T-6 Tail Stand
Rotating Radial Engine Build Stand
(3) R-1340 Roll-A-Round Engine Stand
(3) Prop Racks
Control Surface Racks
(3) 2' Maintenance Stand
Hanging Parts Paint Stands



★ ★ LANDING GEAR, WHEEL ★ ★ and BRAKE INVENTORY



(4) New T-6 MLG Assys. In Crates

(24) T-6 Tail Wheel Trunnions
(23) T-6 Tail Wheel Forks
Large Selection of Tail Wheel Shock Struts
Large Selection of T-6 Tail Wheel Lock Assys.
Several T-6 Tail Strut Fairings
(7) O/H and New T-6 Hydraulic Selector Valves
(70) Hydraulic Selector Valve Cores
Several MLG Actuators and Housings
T-6 Landing Gear and Brake Inventory to include: Wheel Bearings, Landing Gear Strut Switch Bearings, Strut Swivel Pins, Strut Swivel Retainers, Tail Wheel Strut Caps, L/G Emergency Springs, L/G Actuator, Shock Tube Nuts, Fittings, L/G and Brake Lines and Tubes, Towing Lugs, Strut Seal Retainers, L/G Hyd. Line Manifold, Side Lug Inventory, Blocks, L/G Pistons, Brake Shoes, Wheel Covers, Tail Wheel Supports, Brake Backing Plates, L/G Scissors, Actuators, Positive Lock Inventory, L/G Handles, Tail Wheel Steering Horns, Bolts and Hardware, Bearing Blocks, L/G Door Pins, Tail Wheel Spindle Housings, L/G Bushings, L/G Locks, Tail Wheel Spacers, L/G Fairings, Fittings, Brake Pulley Brackets, L/G Latches, Tail Wheel Post Supports, Tail Wheel Springs and Bushings, Master Cylinder Rebuild Inventory, Steering Arms and Rollers, Etc.

(11) T-6 MLG Assys.
(33) T-6 Tail Wheel L/G Assys.
(50+) T-6 MLG Upper Trunnions
(20+) T-6 MLG Lower Gear Legs
(30+) T-6 Landing Gear Barrels
(30) T-6 Landing Gear Wing Fittings
Misc. Warbird Hydraulic Actuators
(40+) T-6 Landing Gear Strut Actuator Mounts



T-6 Hydraulic Actuator and Actuator Selector Valve Overhaul Inventory to include: Pressure Control Valve Plugs, Boots, Packing Retainers, Clevis, Line Blocks, Packing, Lines, Shafts, Needle Assys., Pistons, Control Steps, Valve Assys., Plungers, Restrictors, Sequence Valve Housings, Etc.
(30+) T-6 Main Wheel Assys.
Bendix 33" Main Wheel Assy.
26" Main Wheel Assy.
(40+) T-6 Brake Assys.
(50) 4, 5 and 6" Tail Wheels (Some New)
DC-3 Tail Wheel
(10) T-6 Master Cylinders
(3) Cessna Military Master Cylinders P/N 4017415
(2) New 11.00-12 Tires
Several Main and Tail Wheel Tires

★ WINGS, CONTROL SURFACES ★ and INVENTORY

3) Right Hand T-6 Wings
T-6 Center Section
T-6 Center Section Inventory
(20) T-6 Vertical and Horizontal Stabilizers
(10) T-6 Rudders



(10) T-6 Ailerons

T-6 Wing and Control Surface Inventory to include: Push/Pull Rods, Surface Control Lock Inventory, Flap Hinges, Control Surface Bellcranks, Cables, Elevator Hinges and Supports, Time Tab Rods, Horizontal Stab. Support Braces, Flap Control Handles, Wing Inspection Covers, Ribs and Doublers, Center Section L/G Sight Glass, Trim Tab Supports, Rudder Hinge Covers, Control Surface Clevis, Aileron Brackets, Control Surface Bearings and Spacers, Fixed Gun Outer Wing Fairings, Trailing Edge Ribs, Horizontal Stab. Fittings., Aileron Ribs, Tip Assys., Wing Fairings, Attach Fittings, Etc.



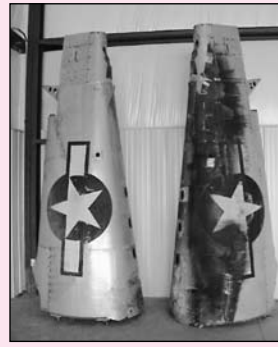
(25) T-6 Elevators
(33+) Wing Tips
(2) Fabric Covered Ailerons
Fabric Covered Rudder
(150) T-6 Trim Tabs (New and Used)
Wing Inboard Leading Edges

★ ★ ★ EXHAUST ★ ★ ★

New R-1340 Exhaust System Assy.
(3) New T-6 Exhaust Collectors

New R-3350 Exhaust Collector
Good Selection of New and Used P&W Exhaust

★ ★ AIRFRAME INVENTORY ★ ★



(2) T-6 Fuselage Tail Sections
(20+) T-6 May West Fairings
(100+) New T-6 Wing Joint Cover Assys.
(33) T-6 Fuselage Side Panels
(31) T-6 Fuel Tanks
(27) T-6 Oil Tanks
Several Fuel Tank Straps

(4) Hydraulic Oil Tanks
(30+) T-6 Stress Panels
Fuselage Side Panel Stringers
(42) T-6 Rudder Peddle Assys. (Some O/H)
(40+) Trim Wheel Assys.
(18) Elevator Trim Wheels
(8) Cockpit Control Surface Lock Assys.
(30) Control Sticks
(4) Control Stick Grips
Several O/H and A/R Starter Pedals
(19) Map Cases
T-6 Cockpit Cold Air Vents
(11) T-6 Instrument Dash Pans
(18) Instrument Panels
(17) Engine Step Assys. and Mounts
(30+) Steps
(10) T-6 Engine Mounts
(20) T-6 Air Intake Boxes

(18) T-6 Fire Walls
(20) Engine Dish Pans
(25) T-6 Carb Inlet Cowling Panels w/Ducts
(35) T-6 Engine Cowling Panels
Cowl Flap Assys.
(6) T-6 Oil Cooler Inlet Scoops
(40) Fuel Gauges and Housings
Several Fuel Gauge Floats
Fuel Gauge Glass and Retainers
T-6 Canvas Instrument Hoods
T-6 Floor Board Assys.
Fuel Selector Handles and Gauges
Oil and Fuel Caps
(16) New Parker Engine Primers P/N P4CA-2A
(13) Engine Primer Cores



★ ★ ★ ACCESSORIES ★ ★ ★

O/H Oil Cooler P/N U6008-DVS
O/H Oil Cooler P/N U-3180-A
(2) Hamilton Standard Prop Governor P/N 1M21G (O/H)
(2) Wet Vac Pump P/N 3P207JA (O/H)
(2) Pesco Engine Driven Fuel Pump, 200 GPH (O/H)
Fuel Pump Motor (O/H) P/N A4949
Hydraulic Pump P/N 1P263E (O/H)
Wobble Pump P/N U2175 (O/H)
Eclipse Starter P/N 915-3E (Bench Checked)
(2) NAR 9B Carburetors
(4) NAY 9 Carburetors
NAR 7 Carburetor
Bendix PD12 Carburetor

(22) Eclipse Mdl. G5 and Series 43 Starters
(4) Eclipse G-6 Starters
(3) Eclipse Mdl. 9 Starter
(3) Rotax Type C-1253 Starters
Eclipse 36E02 Starter
Type 1406 Generator
(3) DC Generators
Jasco Alternator w/ Controller
(21) Tach Generators
(31) Wet Vac Pumps
(27) Pesco & Chandler Evans Engine Driven Fuel Pumps
(28) Pesco and Misc. Hydraulic Pumps
(24) Prop Governors
(40) Bendix Scintilla Radial Engine Mags
Several New Eclipse Booster Coils, Type C-1

(20+) Adel Alcohol Pumps (Some New)
(10) Radial Engine Oil Coolers
Oil Cooler Mounting Clamps
Oil Cooler Bypass Housings
Chandler Evans P/N CE-3140 Pump
Fuel Boost Pumps
(100+) Fuel Selectors Type G, F-1, D-4 and 4150 (Most New)
Several Wobble Pump Housings
(15) Hand Hyd Pump Assys.
(20+) Oil Drain Valves
Suction Relief Valves
Large Selection of Pesco Oil Separators
(4) Starter Handles

★ ★ ★ ENGINE INVENTORY ★ ★ ★

Large Selection of P&W New and Used Engine Inventory to include: Gaskets, Ignition Harnesses, Intake Tubes, Push Rod Housings, Valve Seat Retainers, Rocker Box Covers, Intake Nuts, Piston Pins, Pistons, Tappet Guides, Hardware, Studs, Rocker Arm Shafts, Master Rod Assy., Primer Housings, Starter Drive Gears, Cams, Oil Pump Housings, Rocker Arms, Vermatherms, Primer Lines, Ignition Lead Shields, Lord Mounts, Etc.

R-1340 Rear Case
P&W 1830 Rear Accy. Case
(4) P&W Radial Engine Case Halves
P&W Front Cases and Intermediate Case Halves

New and Used Hyd. Filter Housings
Cont 65/85 Kidney Sump
(9) P&W 1340 Sumps
Large Selection of P&W Engine Baffling

★ ★ ELECTRICAL INVENTORY ★ ★

Large Selection of Electrical and Lighting Inventory to include: Sealed Beams, Miniature Lights, Post Lights, Map Lights, Spools of Electrical Wire, Toggle Switches, Cannon Plugs, Circuit Breakers, Rheostats, Wire Terminals, Relays, Carbon Pile Regulators, Solenoids, Switching Panels, Grimes Recognition Lights, Dynamotors, Coil Assys., New T-6 Fuel Gauge Lamp Assys., Battery Connectors, Battery Hold Down Clamps, Electrical Boxes, and Mounts, Master Switches, Shut-Off Switches, Etc.

(60+) Barber Coleman Aircraft Controller Actuator Motors
Several Electric Cowl Flap Drive Units
(13) New Identification Lamp Control Lights

(7) New Warbird Heated Clothing Rheostats Type Q-1C
(50+) New and Used Landing Light Lenses and Frames

★ AVIONICS and INSTRUMENTS ★

New Garmin Mdl. MD200-206 Course Indicator
(11) O/H Kollsman AN5745 Acceleration Indicator
(9) O/H Attitude Indicator
(3) O/H Manifold Indicator
(2) O/H Airspeed Indicators
(2) O/H Walkman 8-Day Clock
New Cyclone 21 Avionics Fan
King KI-204 Indicator
King KY-196 Com

(28) Pitot Tubes (New and Used)
(10) ADF Football Antennas
(4) Military AN-104 Antennas
Several Garmin GMA340 Install Kits



Purolator Instrument Filters

(100+) Instruments to include: Oil Pressure, Course Indicators, Tachometers, Airspeed Ind., Pressure Gauges, Military Gyros, Compasses, Attitude Gyros, Amp Meters, Turn and Banks, Manifold Gauges, 3-in-1 Gauges, Hydraulic Pressure Gauges, Etc.

★ PROPELLERS and INVENTORY ★



(4) Hamilton Standard Mdl. 12D40 Prop Assys.
 (20) Hamilton Standard Prop Blades
 (3) 6' Hamilton Standard Prop Blades
 New Hamilton Standard 12D40 Prop Hub
 (8) Hamilton Standard 2- and 3-Blade Prop Hubs
 Hamilton Standard Prop Domes



(15) Spinners and Backing Plates
 New Hamilton Standard Plate Assys. P/N 62137
 Hamilton Standard Prop Blade Turning Paddles
 Hamilton Standard Prop Wrenches
 New Hamilton Standard Inventory to include: Brass Bearings, Stops, Counter Weights, Prop Hubs, Etc.

★ ★ ★ T-6 COCKPIT and ★ ★ ★ FUSELAGE INVENTORY

T-6 Cockpit and Fuselage Inventory to include: Rear Fuselage Brackets, Hand Grip Doors, Fuselage Hyd. Filler Cover, Fairing Supports, Trim Wheel Pulleys, Trim Actuator Screws, Cowling Spacers, Baggage Compartment Door Latches, Rear Fuselage Bulkheads, Front and Rear Instrument Panel Supports, Fuselage Fire Channels, Rudder Peddle Locks, Rudder Peddle Adjustment Springs and Rods, Rudder Peddle Bearings, Brake Levers, Flap and L/G Control Handles, Peddle Supports, Bellcrank Assys., Retractable Steps, Control Surface Lock Handles and Assys., Fuselage Stringer Clamps, Control Surface Bellcranks, Control Stick Mounts, Pulleys, Ignition Switch Brackets, Pressure Control Arms, Vent Tubes, Control Stick Torque Tubes, Turtle Deck Skins, Fuselage Skins and Inspection Panels, Stringers, Tubing w/AC Fittings, Carb. Screens, Oil Tank Supports, Relief Tube Supports, Etc.

HARVARD and MISCELLANEOUS WARBIRD AIRCRAFT INVENTORY

Harvard 2 and 4 Exhaust, Dish Pans, Various Brackets, Fittings and Various Inventory
 Executive Mark III Oxygen Console
 New U-8 Seat Cushions
 (10) Misc. Oil and Fuel Tanks

★ SEAT and CANOPY INVENTORY ★

(22) New Curved Top Canopy Plexiglas
 (54) T-6 Center Canopy Assys. and Frames
 (14) T-6 Front Canopy Windscreen Assys. and Frames
 (14) T-6 Rear Canopy Assys. and Frames
 (7) Front Windscreen Attach Skins
 (3) T-6 Windscreen Attach Mounts
 (2) Canopy Turtle Decks
 (20) T-6 and Misc. Cockpit Seats
 (200+) New Shoulder Harness Inertia Reels
 Seatbelt Harnesses and Harness Inventory



T-6 Seat and Canopy Inventory to Include: Front Cockpit Seat Tube Brackets, Inertia Reel Support, Front and Rear Seat Shock Cords, Canopy Rollers, Canopy Plates, Gunners Hood Pivot Support, Front and Rear Flap Control Handles, Canopy Track Supports, New Windscreen Glass, Observer Seat Braces, Pilot Armrests, Canopy Handles, Seat Attach Swivel Assys., Emergency Escape Latch Assys., Cork and Seal, Side Glass, Curved Canopy Top Glass, Inst. Flying Hood Inventory, Seat Adjustment Tubes, Throttle Quadrants and Quadrant Inventory.

★ ★ ★ ENGINES ★ ★ ★

P&W R-1340-AN1 Engine Core
 (3) 2-Cyl. Gas APU Assys.
 Cont. A65 Partial Engine Core

★ ★ ★ CYLINDERS ★ ★ ★

(21) P&W 985, 1340 and Misc Cylinders

★ ★ ★ HARDWARE ★ ★ ★

Very Large Selection of Hardware to include: AN Fittings, Vacuum Fittings, Dzus Fasteners and Dzus Inventory, Nut Plates, AN Bolts and Screws, Lock Nuts, Castle Nuts, Hi-Temp Nuts, AN Washers, Cotter Pins, O-Rings, Worm Clamps, Adel Clamps, Tinnerman Nuts, Grease Zerts, Hydraulic Hose, Bushings, Turn Buckles, Cherry Rivets, Plated Hardware, Plastic Tubing, Solid Rivets, Etc.

★ ★ ★ CHEMICALS ★ ★ ★

Chemicals and Shop Supplies to include: PPG Primer, Urethane Paint, Deltron-2000 Base Coat, DP401LF Primer Catalyst, Acrylic Enamel, Batter Box Black Acid Proof Paint, Adhesive, High Temp Primer Thinner, Butyrate Thinner, Scotch Brite Paint Respirator Filters, PreKote, Safety Wire, LPS Rust Eliminator, Spot Check, Ear Plugs, Bearing Grease, Etc.

★ ★ WARBIRD COLLECTABLES ★ ★

(3) T-6 Machine Gun Fairing and Mount Assys.
 T-6 Turret Glass (Damaged)
 Aft Turret Bomb Sight Mdl. 2C5R4F7
 (13) Dummy Bombs and Cartridges Bomb Shackles
 Antique Radios and Avionics
 Military Flight Helmets

★ A 5% BUYER'S PREMIUM APPLIES TO ALL PURCHASES AT THIS AUCTION. ★

PAYMENT TERMS

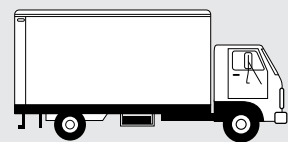
Cash, Certified Funds, or Company Check ONLY if accompanied by Bank Letter of Guarantee!! NO EXCEPTIONS! Wire Transfers will be accepted with a 20% non-refundable deposit day of sale in one of the forms listed above. We also accept MasterCard and Visa with an additional 3% Buyer's Premium applicable.

FLYING AIRCRAFT TERMS

Must be Cash or Certified Funds. A Company Check will be accepted ONLY with an IRREVOCABLE Letter of Credit from your bank. If a Wire Transfer or Bank Draft is used, we need a 20% NON-REFUNDABLE DEPOSIT Day of Sale via one of the above mentioned forms.

PROXY BIDS

If you are unable to attend this auction we will bid on your behalf. For more information, visit our web site at www.starmanauctions.com and click on Upcoming Auctions and scroll down to the Proxy Bid section. Complete form and fax to (402) 592-2327 or call Steve at (402) 681-6456.



LOADING and REMOVAL

Once an item is sold the winning bidder is responsible for its removal. Any cost responsibility and risk of removal of purchases remain with the buyer. Removal may begin after payment in full and must be completed by the posted deadlines. NO EXCEPTIONS OR EXTENSIONS! There may be various trucking companies on site to arrange for transportation. However, it will be the buyer's responsibility to arrange their own trucking.

★ **STARMAN BROS. AUCTIONS INC.** ★

1240 Royal Drive ■ Papillion, NE 68046
 (402) 592-1933 ■ FAX (402) 592-2327
www.starmanauctions.com

Can't attend the auction?
 Bid using our Proxy Bid program.
 See information above!

★ Don't Miss This Opportunity! ★

★ **STARMAN BROS. AIRLINE SERVICES, INC.** ★