

AVIATION AUCTION

ABSOLUTE AUCTION!

NEWJET ENGINE SERVICES

13945 S.W. 139th Ct. ~ Miami, Florida
(Across from Kendall Tamiami Executive Airport)

Thursday & Friday

June 2nd & 3rd, 2011

Starting at 9:30 A.M.

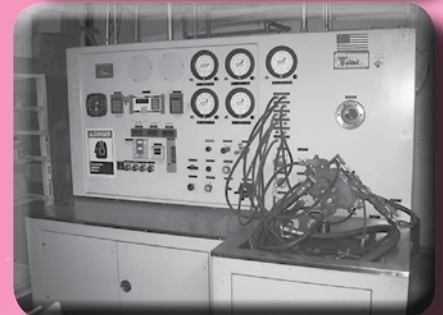
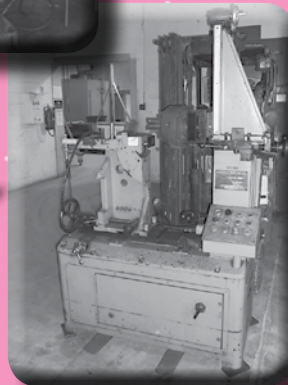
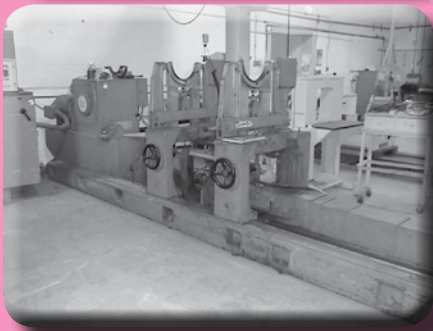
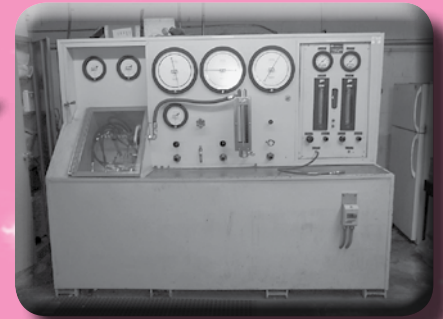
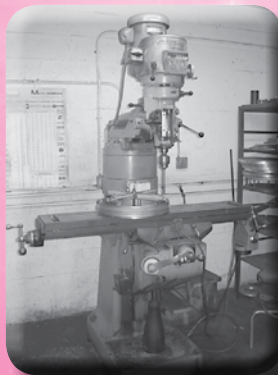
Both Days!

JT8-D OVERHAUL SHOP & LARGE INVENTORY

AIRLINE CONNECTIONS:

All Major Airlines into Miami International Airport.

SALE SITE PHONE
Steve Starman (402) 681-6456



**A 5% BUYER'S
PREMIUM
APPLIES TO ALL
PURCHASES.**

*Note: There will be
several Riggers on-site.
All Material &
Equipment will be
required to be removed
from the building no
later that Wednesday,
June 8th.*

HOTELS

Holiday Inn Express
13475 SW 131st Street
Miami, FL
(786) 837-2100

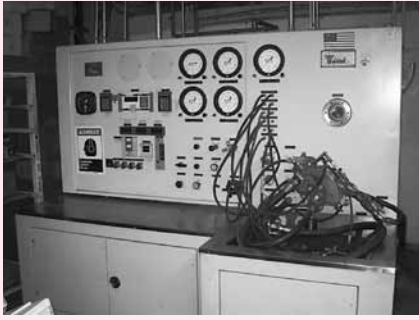
Best Western Plus Hotel & Suites
8560 SW 124th Avenue
Miami, FL
(305) 271-4848

STARMAN BROS. AUCTIONS INC.

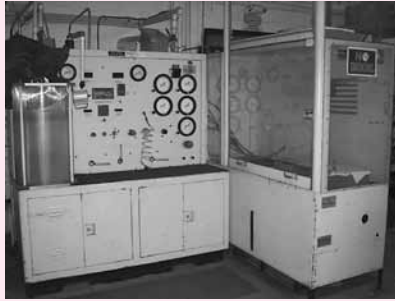
1240 Royal Drive ■ Papillion, NE 68046
(402) 592-1933 ■ FAX (402) 592-2327
www.starmanauctions.com

STARMAN BROS. AIRLINE SERVICES, INC.

★ ★ ★ Fuel & Valve Test Stands ★ ★ ★



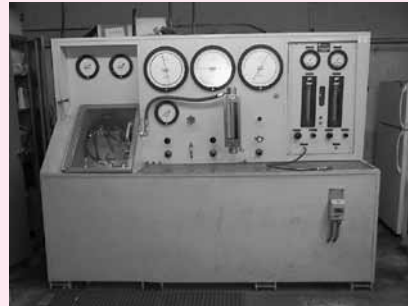
Testek Mdl. 101982 JT3D/JT8D Fuel Pump & Controller Test Stand. (2)ea VariDrives – (1) 60 HP, 100-4500 RPM, (1) 5 HP, 100-4500 RPM. Digital Indicators for PS4 Pressure, Fuel Flow, and Speed. w/Flowdata MPC20 Flow Computer (Flow Range .05–65 GPM)



JT8D Fuel Nozzle, P&D Valve, Fuel Heater and Oil Cooler Universal Test Stand. Operates at 0-1200 PSI, Flows at 0-12,500 PPH. w/Cox Mdl. 4050 Linear Multiflow Meter (45-65 GPM)

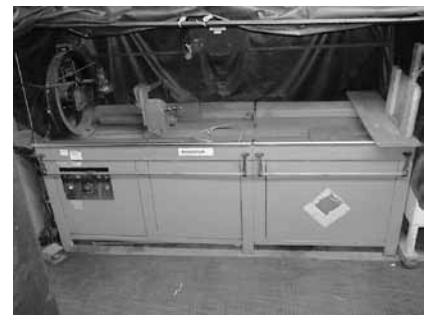


Bauer Mdl. BMI-1378 Oil Flow Test Stand (for Oil Nozzles.) w/ Cox Series 4000 Digital Flow Computer



JT8D PRBC & Compressor Bleed Valve Test Stand. Supplies Air up to 250 PSIA, 5 Different Pressure Sources (3ea for PRBC and 2ea for Compressor Bleed Valves), Requires 100 PSIG Shop Air & 300 PSIF High Pressure Air

NDT Equipment



Magnaflux Mdl. H-820R Magnetic Particle Inspection Bench. Mag / DeMag. Max Output 6000 Amps

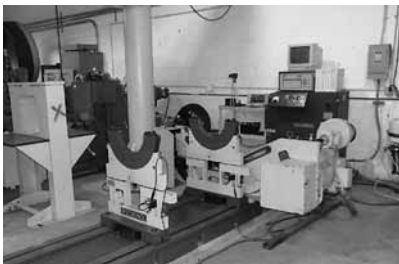


Magnaflux Type X2152 Post Type Magnetic Particle Inspection Bench
Magnaflux Type SB-2814 AC Unit DeMag Bench
Magnaflux Type SB-1416 DeMag Ring

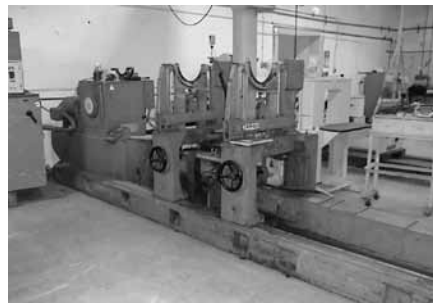


Zyglo Dye Penetrant Inspection Line, Approx 24ft. Includes Penetrant & Rinse Station, Zyglo Mdl. ZD3072S Oven, and Zyglo Developer Station.
Zyglo Blacklight Inspection Booth
Magnaflux ED-1500 Eddy Current Tester

★ ★ ★ Balancing Machines ★ ★ ★



Schenck Mdl HL5B Dynamic Horizontal Balancing Machine, Serial # AHG8518, Mfd 1999, Maximum Rotor Weight 2200 Lbs, Maximum Weight Per Support 1500 Lbs, 120 – 5000 RPM, 138" Bed Length, Maximum Diameter Over Bed 63", Maximum Diameter over Belt Drive Bracket 31.5", Maximum Diameter Over Motor 49.2". Max Distance Between Centerlines 92.5", Min. Distance 12.5" w/Belt Drive inboard (5.5" w/Belt Drive Outboard). Cylindrical Bore Diameter of Bearing Saddles 13", 30 HP Drive Motor, w/Schenck CAB690 Control Head and Computer Monitor. Very Little Usage.



Gisholt Type U Dynamic Horizontal Balancing Machine, Serial # 3947-2, Max Weight Per Pedestal 2100lbs, Pedestal Bore 13", Maximum Swing 66" Bed Length 140", w/Schenck CAB570 Control Head



Gisholt Type SV-250 Static Vertical Balancing Machine, Serial # 4649x2, 54" Max Rotor, Manual Controls, w/ GE Mdl. 6V10F3095X SCR Speed Variator For 10 HP Motor



Schenck Mdl VE4L Static Vertical Balancing Machine, Serial # AVF8517, Mfd. 1999, Weight Range 5-330lbs, 120-5000 RPM, Shroud Inside Diameter 62", Balancing Accuracy 30 Micro-Inches or Better, 15 HP Drive Motor, w/Schenck CAB690 Control Head and Computer Monitor

Air Compressors & Dryer

Ingersoll Rand Mdl SSR-XF50 Rotary Air Compressor, Capacity 218 CFM, Operating Pressure 125 PSIG, 50 Hp Motor

Ingersoll Rand Mdl SSR-EP30U Rotary Air Compressor, Capacity 125 CFM, Operating Pressure 125 PSIG, 30 HP Motor, Max Modulated Press 128 PSIG

Ingersoll Rand Mdl. T3015120H Horizontal Air Compressor, w/15 HP Motor, 30 Gal Tank

Quincy Mdl 340 Horizontal Air Compressor, w/10 HP Motor, Dual Stage with Holding Tank

Ingersoll Rand Mdl. HG400 Compressed Air Dryer, Max Pressure 250 PSIG, Max Inlet Air Temp 130° F.

Master Chiller Mdl. MCP1004 Water Chiller

**A 5% BUYER'S PREMIUM
APPLIES TO ALL PURCHASES**

★ ★ Lathes, Milling Machine, Grinder & Shop Equipment ★ ★



Bullard 46" Dynatrol Vertical Turret Lathe, Serial # 33390, Max Swing 58", Max Height under Cross Rail 40", Turret Swivel 30", Side Head Travels 38.75" Vertical & 23.75" Horizontal, 40 HP Motor, w/Newall DP7 Digital Readout
Bullard 36" Vertical Turret Lathe, Serial # 19642

Bridgeport Series II Vertical Milling Machine, Serial # 2J137211, 2 HP Head, 9" x 48" 3 Slot Table, 50 RPM to 3500 RPM Spindle Speed, Servo Products Power Feed for Table. 6 1/2" Riser Block



Rutland Mdl. 90:1 14" Rotary Table
Dumore Mdl. C6C34DZ1 Tool Post Grinder



Sweco Mdl FMC-7LR Vibratory Finish Mill, w/Water Injection 43" Tub, Foot Control

Hydraulics International Mdl. 90258-100 Self Contained Ground Hydraulic Power Unit. Max Operating Pressure 4000 PSI at 35 GPM, 75 HP Motor. (Note: This unit is missing most gauges and will require some work)

Hansvedt Electrical Discharge Machine (EDM)

(2) ea Stainless Steel Cleaning Tanks 34" x 34" x 47" Deep

(2) ea Stainless Steel Solvent Cleaning Tanks

Stainless Steel Heated Alkaline Cleaning Tank, 48" x 48" x 48"

Chicago Pneumatic CP450 Compression Riveter

Chicago Pneumatic CP625 Compression Riveter

(2) Chicago Pneumatic CP351 Hand Held Compression Riveters

Parma Manufacturing Work-a-Matic Vertical Band Saw



Summit Mdl. 19-4 x 80 Gap Bed Lathe, 19" Swing Over Bed, 10 3/4" Swing Over Cross Slides, 27" Swing Over Gap, 15 3/8" Gap Length, 4 1/8" Hollow Spindle. 108" Bed, 80" Between Centers, Spindle Speed 22-1500 RPM. 3 Jaw Chuck, w/Saphire DRO Counter



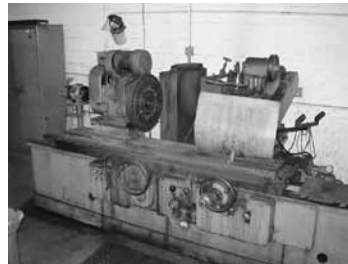
Takisawa Mdl. TSL-800 Lathe, 48" Bed, 28" Between Centers, 12" Swing, 55-1800 RPM Spindle Speed



Miller 330ST Aircrafter Constant Current AC/DC Welding Power Source. w/Miller Coolmate 4 Water Coolant System
Miller Synchrowave 250 CC-AC/DC Welding Power Source. W/Bernard Mdl. 3500SS Water Coolant System
Branson Mdl. 5510 benchtop Ultrasonic Cleaner
Selig Barrel Top Parts Washer
Precision 180 Series Water Bath
Matthews Mdl. 3045 Brass Strap Embossing Machine



Longem Mdl. LG2080D Gap Bed Lathe, 20" Swing Over Bed, 25" Swing in Gap, 108" Bed, 80" Between Centers, 3" Hollow Spindle, 11.2-1600 RPM Spindle Speed, 4 Jaw and 3 Jaw Chucks



Norton Mdl. U4 14" x 48" Universal ID/OD Cylindrical Grinder w/ Newall Digital Readout

Trinco 60" x 60" Double Station Bead Blast Cabinet w/ Trinco Mdl. DP850 Reclaimer and Filter

Trinco 48" x 48" Bead Blast Cabinet w/ Trinco Mdl DEDC Reclaimer / Filter
Zero BNP600-1 Bead Blast Cabinet w/ Zero Mdl 900 Filter, 60" Deep x 57" Wide x 55" Tall

Acromark Mdl 2N Brass Tag Embossing Machine

Paint Booth, 7' Wide x 6.5' Tall x 6'Deep
Genie Mdl AWP-20S Aerial Work Platform 20' Max Height

JET 8" Bench Grinder
Various Bench & Machinists Vices
Carolina CP-100 30 Ton H-Frame Press

Phase II Arbor Press
48" x 36" x 4 1/2" Granite Surface Plate
36" x 24" Granite Surface Plate

24" x 24" Steel Lapping Plate
18" x 18" Granite Surface Plate

Drills
Torque Wrenches
Taps & Dies

Reamers
HeliCoils
Grinding Wheels
End Mills

Number & Letter Stamps



48" Facing Lathe, w/ Pope Mdl. P2533HV Spindle, Faceplate to Tool Post Distance 16" to 40", Motor Masters 20000 Series Speed Controller, DRC X/Y Digital Readout.



Gruenberg Electric Company Mdl. T65V960 Cart Type Electric Oven, Serial # 3066, Max Temp 650°, 33,000 Watt, 48" Wide x 72" Tall x 48" Deep



Advance Manufacturing Co Mdl. ADTB1 Universal Tab Bending Rivet Flaring Machine. Disc Diameter Swing 9.5" Minimum - 42.5" Maximum, Bed Travel 1.5" Min - 42.5" Max

★ ★ Gantries, JIB Cranes & Chain Hoists ★ ★

Free Standing Overhead Gantry, 22' Long x 12' Wide x 13' Tall
Free Standing Overhead Gantry, 18' Long x 11' Wide x 15' Tall, Bolted Together

Free Standing Overhead Gantry, 14' Long x 10' Wide x 13' Tall, Bolted Together

Free Standing Overhead Gantry 13' Long x 10' Wide x 13' Tall, Bolted Together

Free Standing Overhead Gantry, 14' Long x 9' Wide x 14' Tall, Bolted Together

Handling Systems 2 Ton A Frame Gantry, Adjustable From 7 1/2' to 13' Tall

Abell-Howe Free Standing 1 Ton Jib Crane, 12' Tall, 10' Arm, w/Lodestar 1 Ton Electric Chain Hoist

1/2 Ton Free Standing Jib Crane 12' Tall, 8' Arm, w/Lodestar Electric Chain Hoist

1/4 Ton Free Standing Jib Crane, 12' Tall, 6' Arm, w/Coffing 1/4 Ton Electric Chain Hoist

(8) Coffing 2 Ton Electric Chain Hoists

Lodestar 2 ton Electric Chain Hoist

Beebe Bros 2 Ton Electric Chain hoist
(2) Little Mule 2 Ton Electric Chain Hoist
Coffing 1 Ton Electric Chain Hoist

A 5% BUYER'S PREMIUM APPLIES TO ALL PURCHASES

★ ★ Pratt & Whitney JT8D Tooling & Engine Stands ★ ★

Nearly Complete Set & Partial Set of JT8D Standard Tooling. To Include: Assembly & Disassembly Tools for Cold Section, Hot Section, Rotors, Bearings, and Gearbox Tooling.

JT8D High Compressor Build Up & Balance Fixtures with Misc. Tooling

(2) JT8D Low Compressor Build Up & Balance Fixture

JT8D Low Pressure Turbine Build Up Fixture & Tooling

Diffuser Case Rotating Build Up Fixture
JT8D Exhaust Build Up Fixture and Misc. Tooling
JT8D High Compressor Disassembly Fixture
JT8D Low Compressor Disassembly Fixture
(3) JT8D Hot Section Stands
(3) LPT Shaft Carts
JT8D Engine Slings
Misc. JT8D Pressure Check Tooling
Misc. JT8D-200 Inspection Tooling
Several Pratt & Whitney Inspection Probes and Standards

(35) JT8D Engine Transport & Shipping Stands
Several Engine Support Stands
(2) JT8D Engine Test Cell Strong Backs & Bell Mouth
(2) Compair JT3 Blade & Vane Inspection Tool
(2) Compair JT9D-7A T2 Vane Inspection Tools
Compair JT9D T1 Vane Inspection Tool
JT3D C1 Fan Stretch Gauge
Fuel Nozzle Pressure Test Cart

★ ★ ★ Measuring Equipment ★ ★ ★

Mitutoyo Mdl PH-3500 Profile Projector
Mitutoyo Type TM-101 Tool Makers Microscope
Mitutoyo 0" - 12" Outside Micrometer Set w/10 Micrometers
Several Outside Micrometers 0" - 20"
(2) Horseshoe Shape Outside Micrometers
Mitutoyo Inside Micrometer
Browne & Sharpe Inside Micrometer
Micrometer Standards
Starrett Depth Micrometers
Starrett Depth Gauges
18" Starrett Height Gauge

24" Mitutoyo Height Gauge
Vernier Calipers 6" - 20"
Fowler 14-15" Bore Gauge
Dial Bore Gauges
Several Dial Indicators
(3) Federal Series 300P Snap Gauges
Pin Gauge Set
Vane Angle Gauges
PI Tape
Pressure Gauges
Shadograph Exact Weight Scale
Toledo 30lb Scale

★ ★ ★ Misc Test Equipment ★ ★ ★

(2) GenRad Type 1531 Strobotac Electronic Stroboscopes
(3) Bell & Howell Type 1-117 Vibration Meters
Bell & Howell Primary Pressure Standard
Addrox Mdl. DLM-1000 Ultra Violet Digital Radiometer
Lectroetch Mdl. V-10A Chemical Etching Tool
Sencore Mdl LC53 Capacitor Inductor Analyzer
Sifco Calcuplate Selective Plating Computer

Cenco Mdl. MPI-218 Throttle Level Angle Translator
Colman Impressor
Eldec Mdl 3-506-02 Fuel Flow Spring Test & Balance Fixture
Hydrometer Set
ITI Borescope Light Source Mdl. 25021
Tektronix Mdl. J16 Digital Photometer
Triplet Mdl. 630-PL Voltmeter
Forster Mdl S2.320 Isometer

★ ★ Pratt & Whitney JT8D Engines ★ ★

JT8D-9A Engine, Total Time 49,230.92 Hrs, Total Cycles 47,544, Condition: As Removed, Cycle Limiter 1982 CR C3,C13,T1, Hour Limiter 3,984.35 C2, ASB 6431 Due March 23, 2013, Last Operator Sky King Airlines, Stage 3 Heavyweight Configuration, Removal Reason: Lease Return & C7 FOD.
JT8D-17 Engine, total Time 62,201.7 Hrs, total Cycles 36,024, Condition: As Removed, Cycle Limiter 115 C2,4,5,6,8,10,11,12,13,T1, Hour Limiter 478.3 C3,4,5,6,8,10,11,12,13,T1, ASB 6431 Due: N/A, Last Operator Aeropostal, Stage 2 Configuration, Removal Reson: Lease Return Timex LLP's

Bearing Inspection Equipment



Bearing Inspection Inc. Mdl. BA-20-3E Bearing Analyzer
Starrett Bench Top Hardness Tester Catalog # 3814
Wilson Mdl. 3TTDRB Bench Top Hardness Tester
Pratt & Whitney Bearing Load Tester & Various Fixtures
Bearing Cleaning Line w/3ea 24" x 24" x 24" Stainless Steel Tanks. Heated Alkaline, Cold Water Rinse, Rust Inhibitor)

Computers & Office Equipment

Dell Dimension & Optiplex Computers with Flat Screen Monitors
(2) Ricoh Mdl. 1515MF Copiers
Panasonic Mdl. DP-3030 Copier
Hewlett Packard Laserjet Printers
(6) Cherry Wood Executive Desks w/Right Hand Returns
Cherry Wood Book Shelves
4 Drawer File Cabinets
Leather Office Chairs
4 Drawer Lateral Files
Paper Shredder

STARMAN BROS. AUCTIONS INC.

1240 Royal Drive ■ Papillion, NE 68046
(402) 592-1933 ■ FAX (402) 592-2327
www.starmanauctions.com



STARMAN BROS. AIRLINE SERVICES, INC.

A 5% BUYER'S PREMIUM APPLIES TO ALL PURCHASES

★★★ Pratt & Whitney JT8D Accessories & Engine Inventory ★★★

New JT8D-9 to -200 Expendable Inventory. To Include: Shoulder Bolts, Strainers, Washers, Lock Pins, Springs, Solid Rivets, Brackets, Filters, Seals, Gaskets, O-Rings, Rivet Pins, Clamps, Bearings, Plugs, Grommets, Counter Weights, Screws, Flanges, Flange Bolts, Bearing Seals, Heat Shields, Etc.

New JT8D Fuel Control & Pump Repair Inventory. To Include: Sleeve Bushings, Nut Plates, Fly Weights, Chamber Pins, Washers, Springs, Eyelets, Pins, Gaskets, Seals, Nut Options

(75+) JT8D Fuel Controllers, (50+) JT8D Fuel Pumps, (2) AC Generators 976J498-1, (50+) JT8D Main Gearbox Assys, Gears & Gear Shafts, Anti Ice Valves, Fuel Nozzles & Supports, Fuel Heaters, All Types of Bearings & Bearing Housings, Compressor Bleed Valves, CSD Oil Coolers, Pressure Ratio Bleed Controllers, P & D Valves, Ignition Exciters, Igniter Leads, Tach Generators, Turbine Nozzle Cases, -9 Through -200 Diffuser Cases, HPT Shafts, LPT Shafts, Turbine Disks, All Stages of Compressor Blades, Compressor Disks, Compressor Cases, Combustion Chambers & Supports, -15A Compressor Intermediate Cases, Shrouds, -15, -17 Front Fan Cases, -17 Exhaust Cases, Turbine Exhaust Inner Cases, Outer Combustion Cases, Inner & Outer Fan Ducts, Stators, Spacers, Turbine Air Seals, Carbon Seals, Fan Assys, Labyrinth Seals, Turbine Air Seals, N2 Front Hubs, Tobi Ducts, Fuel Manifolds, Oil Qty Transmitter, Oil Separators, Scavenger Pumps, Fire Detection Loops, Fuel Flow Transmitters, Bleed Valve Manifold Assys., Oil Slingers, Pump Housings, Bearing Shield Tubes, Bearing Air Seals, Oil Dampers, Scavenger Tubes, Gearbox Bearings, Heat Shields, Tie Rod Bolts, Large Selection of Tubes & Supports, Gang Nuts, Lock Nuts

Note: This is a Very Large Inventory. Will Include some "OH" Units w/8130's & AR Serviceable

★ Miscellaneous ★

Several Sections Pallet Racking
(11) Stanley Vidmar & Vidmar Style Cabinets
Several Shop Benches Wood & Metal
(9) Heavy Duty and Misc 2 Door Cabinets
20' Sea Going Container
Large Selection of Roll Around Parts Carts
Several Dayton & Misc. Pedestal Shop Fans
(3) 2 Door Fire Proof Cabinets

★ Misc 727, 737, DC-9 Rotables & Misc ★

DC-10 Translating Sleeve 9007M60G46
727, 737, & DC-9 QEC Kits
Butterfly Valves
CFM56 Gearbox
(4) A300 Cockpit Seats
(5) Nose Wheels Assys
Flight Control Panels
Bearings
Stabilizer Trim Units
Actuators
Check Valves
Cockpit Lights
Direct Current Power Supplies
Coffee Makers
Relays
Emergency Lights
Contactors
Switching Units

AUCTIONEER'S NOTE

Newjet Engine Services has been closed and all the Equipment & Inventory is being sold. This auction will offer a Large Selection of JT8-D Inventory as well as miscellaneous aircraft inventory. Also included are some very nice Balance Machines & Fuel Test Benches and a good selection of Shop Equipment & JT8-D Tooling. Everything sells "AS IS, WHERE IS" with no warranties implied or expressed. Neither the auctioneer nor owners shall be liable for any incorrect description, fault, or defect. Everything positively sells to the highest bidder. Payment must be made in full day of sale. No property removed until settled for. Auctioneer is not responsible for accidents or stolen property. All counts are approximate. Announcements made day of sale takes precedence over all printed material.

★★ Instruments & Avionics ★★

(200+) Instruments to Include: Altimeters, Airspeed Indicators, Ammeters, Fuel Qty Indicators, Oil Temp Indicators, Rate Gyros, Tach Indicators, Etc.
Various Pieces of Avionics

PAYMENT TERMS

Cash, Certified Funds, or Company Check ONLY if accompanied by Bank Letter of Guarantee!! NO EXCEPTIONS! Wire Transfers will be accepted with a 20% non-refundable deposit day of sale in one of the forms listed above. We also accept MasterCard and Visa with an additional 3% Buyers Premium applicable. A 5% Buyer's Premium will apply to ALL purchases.

PROXY BIDS

If you are unable to attend this auction we will bid on your behalf. For more info visit our web site at www.starmanauctions.com and click on Upcoming Auctions and scroll down to the Proxy Bid Section. Complete form and fax to (402) 592-2327 or call Steve at (402) 681-6456.

**A 5% BUYER'S
PREMIUM APPLIES TO
ALL PURCHASES**

LOADING & REMOVAL

Once an item is sold the winning bidder is responsible for its removal. Any cost responsibility and risk of removal of purchases remain with the buyer. Removal may begin after payment in full and must be completed by the posted deadlines. NO EXCEPTIONS OR EXTENSIONS! There may be various trucking companies on site to arrange for transportation. However, it will be the buyer's responsibility to arrange their own trucking. There will be several Riggers on site. All Material & Equipment will be required to be removed from the building no later than Wednesday, June 8th, 2011.

 **STARMAN BROS.** 
AUCTIONS INC.

1240 Royal Drive ■ Papillion, NE 68046
(402) 592-1933 ■ FAX (402) 592-2327
www.starmanauctions.com

 **STARMAN BROS.** 
AIRLINE SERVICES, INC.

STARMAN BROS. AUCTIONS INC.

1240 Royal Drive • Papillion, NE 68046
(402) 592-1933
www.starmanauctions.com

Return Service Requested

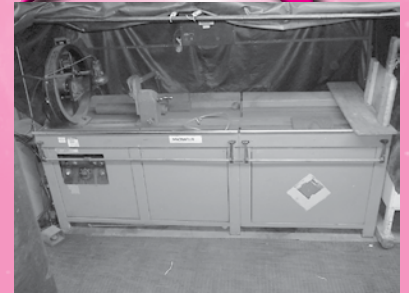
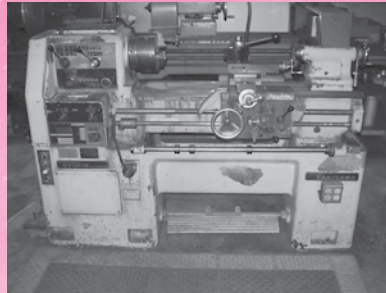
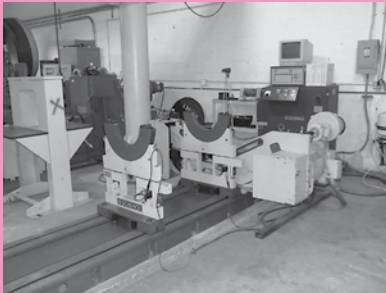
PRSR FIRST CLASS
U.S. POSTAGE
PAID
MAIL U.S.A.

First Class

AVIATION AUCTION

NEWJET ENGINE SERVICES
13945 S.W. 139th Ct. ~ Miami, Florida
(Across from Kendall Tamiami Executive Airport)

JT8-D OVERHAUL SHOP & LARGE INVENTORY



ABSOLUTE AUCTION!

Thursday & Friday
June 2nd & 3rd, 2011
Starting at 9:30 A.M.
Both Days!

STARMAN BROS. AUCTIONS INC.

1240 Royal Drive • Papillion, NE 68046
(402) 592-1933 • FAX (402) 592-2327
www.starmanauctions.com

STARMAN BROS. AIRLINE SERVICES, INC.