

# AVIATION

# AUCTION

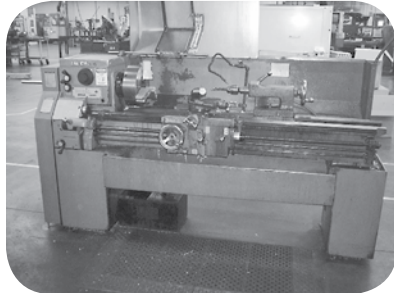
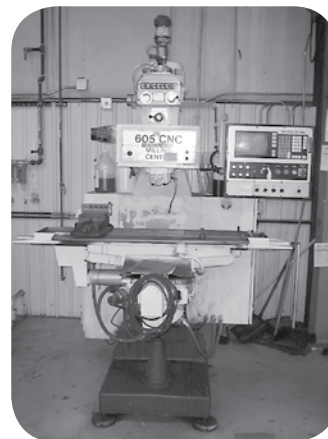
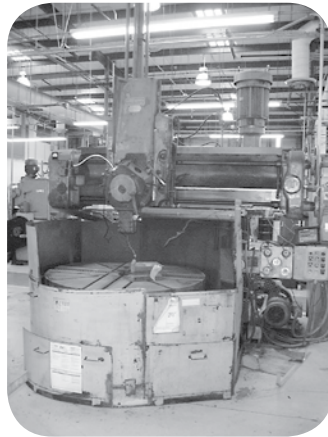
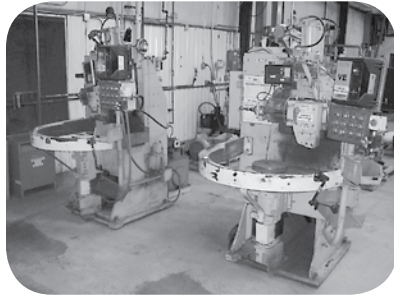
**FRIDAY ~ JULY 10<sup>th</sup>, 2009**  
**Starting at 10:00 A.M. (CDT)**

**PAS TECHNOLOGIES**  
10325 East 58th Street~Tulsa, Oklahoma

**DIRECTIONS:** From Tulsa Int'l Airport take Hwy 169 South to 51<sup>st</sup> Street, turn Right (West) go approx. ½ Mile to Mingo Rd, Turn Left (South) go approx. ¾ Mile to 58<sup>th</sup> Street, Turn Left approx. 2-1/2 Blocks, Auction Site on Left.

**OPEN HOUSE: Thursday, July 9<sup>th</sup> from 9:30 A.M. to 5:00 P.M.**

## ABSOLUTE AUCTION



**A 5% BUYER'S PREMIUM WILL APPLY TO ALL PURCHASES AT THIS AUCTION**

**SALE SITE PHONE: (918) 461-5000 or Scott Moore (402) 681-3652**

### HOTELS

**Holiday Inn Express**  
9010 E 71<sup>st</sup> St.  
Tulsa, OK  
(918) 459-5321

**Staybridge Suites**  
11111 E 73<sup>rd</sup> St.  
Tulsa, OK  
(918) 461-2100

**Hampton Inn & Suites**  
7141 S 85<sup>th</sup> East Ave  
Tulsa, OK  
(918) 294-3300

**Springhill Suites by Marriott**  
11015 E 73<sup>rd</sup> St.  
Tulsa, OK  
(918) 254-1777

**Fairfield Inn by Marriott**  
9020 E 71<sup>st</sup> St.  
Tulsa, OK  
(918) 252-7754

**Homewood Suites**  
4900 W Madison Pl.  
Tulsa, OK  
(918) 392-7700

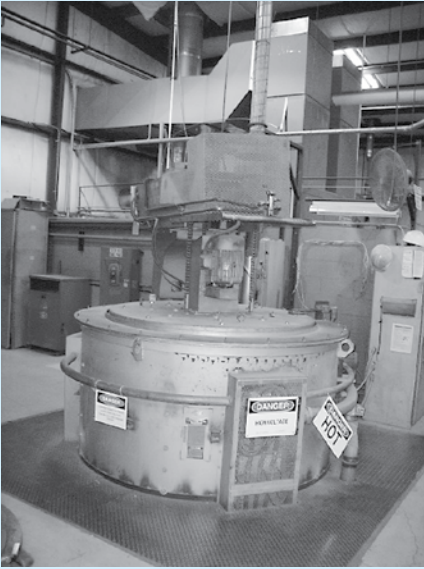
**AUCTIONEER'S NOTE:** PAS Technologies, Inc. has closed their Tulsa facilities and has down-sized others. They have therefore contracted with Starman Bros. Auctions, Inc. to liquidate at Public and On-Line Auctions ALL SURPLUS equipment from those facilities. This auction offers some very good pieces of industrial equipment used for Manufacturing and Repair. Everything sells "AS IS" "WHERE IS" with no warranties implied or expressed. Neither the Auctioneer nor Owners shall be liable for any incorrect description, fault, or defects. Everything positively sells to the highest bidder. Payment must be made in full day of sale. No property removed until settled for. Auctioneer in not responsible for accidents or stolen property.

**STARMAN BROS. AUCTIONS INC.**

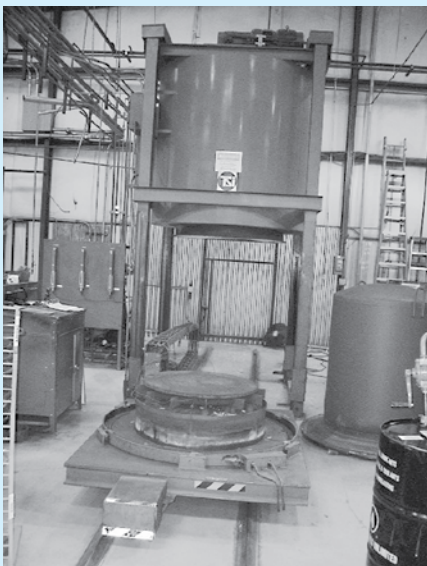
1240 Royal Drive ■ Papillion, NE 68046-2082  
(402) 592-1933 Fax: (402) 592-2327  
website: www.starmanauctions.com

**STARMAN BROS. AIRLINE SERVICES, INC.**

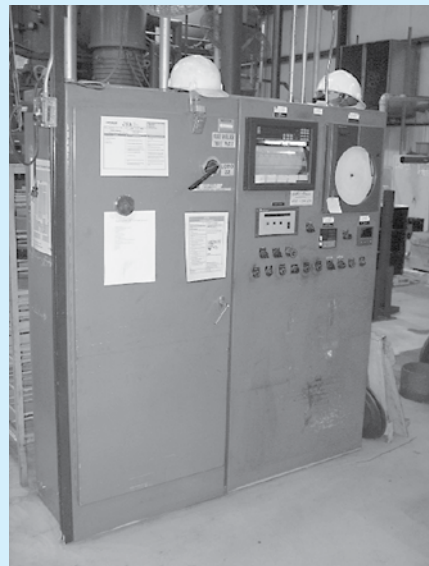
## FURNACES & OVENS



Lindberg Mdl 12-RP-4848-18A Pit Furnace S/N 24485, Max Temp 1850° F, Heating Chamber 48" Diameter x 48" High, Total Load 2,000 Lb. Lindberg Control Panel w/Honeywell LCD Readout, Chart Recorder & Honeywell Truline DR-4500A Circular Chart Recorder.



TSI Bottom Load Retort Furnace Heating Element Rating 100 KW, Max Operating Temp 2200° F, Size 40" Diameter x 40" High, Loading Capacity 1,000 LB/3 Hours, Honeywell Control Panel w/Honeywell DR-4500A Truline Circular Chart Recorder & Honeywell UDC 2000 Universal Digital Controller, Honeywell DPR Strip Chart Recorder, Gas Flow 275-300 CFH

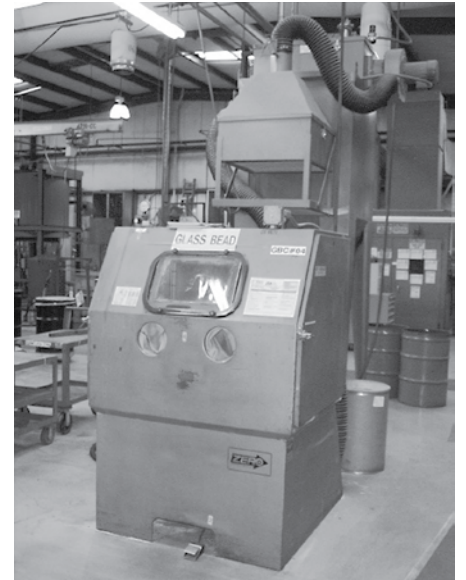


Grieve Mdl 323 Electric Oven, Max Temp 400° F, 36" W x 23" D x 42" H Inside Measurements.  
Uamato Mdl DKN-400 Constant Temp Electric Oven, 17" W x 16-1/2" D x 16" H



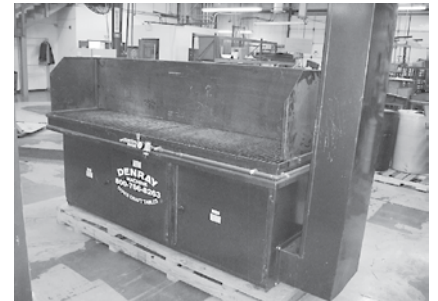
**A 5% BUYER'S PREMIUM WILL APPLY TO ALL PURCHASES AT THIS AUCTION**

## BLAST CABINETS



(2) Zero Mdl 220-4 600 R&DF Blasting Cabinets & Reclaimers, Both Have Mdl RPH-2L Dust Collectors

## DOWN DRAFT TABLES



DenRay Machine Mdl 9600BG Double Sided Down Draft Table, 8' x 4'

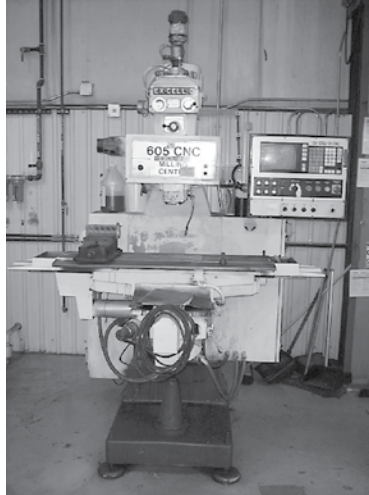


Uni-Wash/Polaris Mdl V-4000 Down Draft Blending Booth, 5' Wide  
Donaldson Torritt Mdl VS-1200 Dust Collector, 3 HP

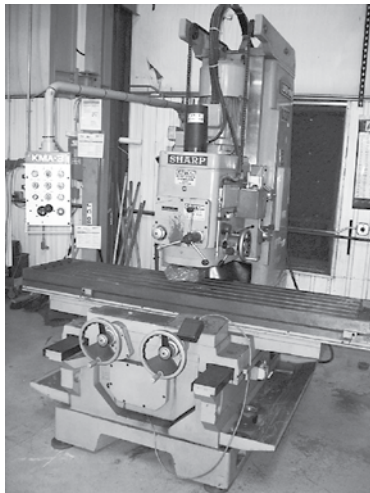
## CNC MACHINE CENTER, VERTICAL MILLS & VTL'S



Republic-Lagun Mdl 4824 CNC Vertical Machine Center w/Dynapath Controller, 48" x 24" Table, 3 Axis, X Axis Travel 40", Y Axis Travel 24", Z Axis Travel 23", Max Load 4,500 LB, Table Center to Column 18-7/8" Min - 43-1/2" Max, Table Top to Floor 33-1/4", Spindle Head Motor 21.5 HP, Spindle Speed 60-5,000 RPM, 2-Speed Hi Low, #40 Tapper, 30 Tool Auto Tool Changer

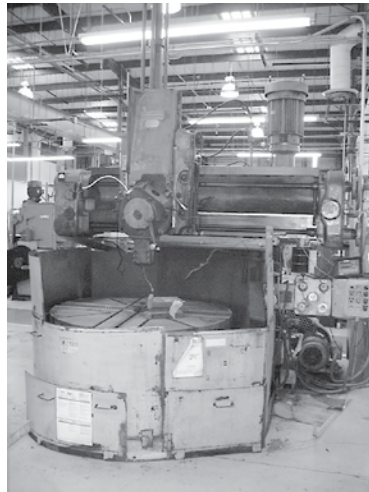


Ex-Cello 605 CNC Ram Turret Milling Center, 48" x 9" Table, 3 Slot, Spindle Speed 85- 4,000 RPM, 2-HP, Table Longitudinal Travel 33-1/4", Table Cross Travel 13", Table & Ram Vertical Travel 16" w/Dynapath Delta 10M Computer Numerical Controller, Power Feed Table



Sharp Mdl KMA-3 CNC Vertical Milling Boring Machine, Table 20" x 87", 5-Slot, Table Travel 59", Cross Travel 24", Spindle Head Travel 31-1/2", NST #50 Tapper, Spindle Speed 45-1,500 RPM, 20 HP Motor

Webster Bennett 36" Vertical Turret Lathe, Table Diameter 36", Max Swing 46", Variable Speed Table, 4 Jaw w/Sokki Digital XY Readout



Webster Bennett 60" Vertical Turret Lathe, 60" Table Diameter, 64" Swing, 4 Jaw Chuck, 84 RPM w/Newall Digital XY Readout

## COORDINATE MEASURING MACHINE & SURFACE PLATES

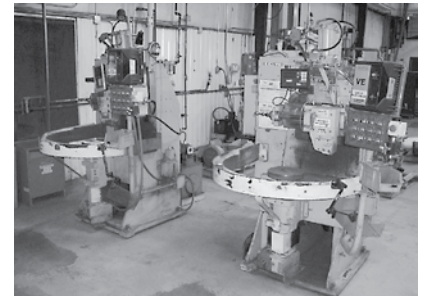


Zeiss Mdl Eclipse 4040-24 Coordinate Measuring Machine, XYZ Axis Bridge System w/Renishaw Probe w/Zeiss U-Soft Version 9.0 PC Controller

Starrett Granite Surface Plate Table, 48" x 36" x 8" Precision Granite Surface Plate Table, Grade A, 48" x 48" x 6"

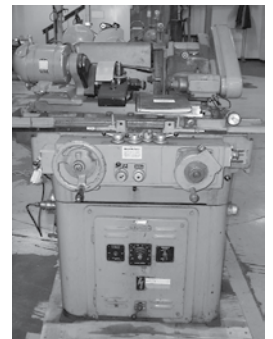
Standridge Granite Surface Plate Table, Grade A, 48" x 48" x 6"

## GRINDERS



(3) Excello Mini VTL's (Built exclusively for PAS), Have 15% Tilting Heads, Single Tool Holder, 36" Max Diameter, 0-100 RPM Turning Rate, 6" Vertical Head Travel, Topaz DRO & Boston Gear, and Dayton Speed Increasers. These were being used to cut grooves in P&W JT-8 Engine Air Seals.

(2) Mayford MG-12 Hydraulic Cylindrical Grinders, Max Grinding Diameter 3", Swing Over Table 5", Max Table Travel 13-1/2", Cap Between Centers 12", Swivel Tables



## FORK & SCISSOR LIFTS



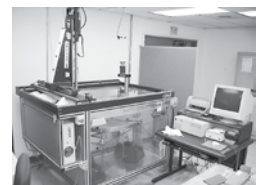
Hyster Mdl E60BS-34 Electric Forklift, 5,000 LB, Hard Rubber Tires, Side Shift Forks, Triple Stage, 18' Mast w/Charger

Genie Mdl GS-1930 Electric Scissor Lift w/Extendable Platform, 6' Platform Extended 8'5", 19' Max Platform Height  
(2) Lift Rite 5,000 LB Pallet Jacks



## IMMERSION C-SCAN INSPECTION SYSTEM

Sonix Flex Scan-C Ultrasonic Immersion C-Scan System w/Tank & Computer Software System, Ultrasonic Inspection (Tank used to test bonding between materials)



**A 5% BUYER'S PREMIUM WILL APPLY TO ALL PURCHASES AT THIS AUCTION**

## MISCELLANEOUS EQUIPMENT

Setco/Klock Mdl AC-200 Series 1500 Spark Erosion Grinding System w/Cart Mounted Power Pack, Spindle Motor 1.5 HP, 3,600 RPM  
 Hobart TR-250-HF Welding Power Source w/Stick & Tig Welders, Water Cooled, Foot Control  
 Grizzly 12" Disc Sander  
 Cooland Wizard Mdl CWJ17-01 Self Contained Cool & Reconditioning System  
 Kalamazoo 12" Disc Sander w/Dust Collector Cabinet  
 Fatigue Technology Mdl FTI-727-57-0180-1 Cold Expansion Tool & Tool Kit  
 Troyke Mdl U-18 18" Rotating Milling Table  
 (2) K.O. Lee Mdl B3023G1 Tool Post Grinders, 2 HP  
 Zeks Mdl 250HBBA400 Air Dyer  
 Zorin Mdl 9820SPF Drum Jack, 1,000 LB  
 Dumore Tool Post Grinder  
 Small 12 Ton H-Frame Press  
 (3) Baldor ½ HP Pedestal Grinders



48" x 28" x 17" Stainless Steel Rinse Tank

## BENCHES, CABINETS, CARTS, ETC.

(10) 2-Door & Small Single Door Fireproof Cabinets  
 (10) 2-Door Metal Cabinets includes Tennsco & Lyon  
 (5) Lista 5-Drawer Tool Cabinets  
 (8) Lista 6' Shop Benches w/Maple Tops & 5-Drawer Cabinets  
 (12) 6' & Misc Shop Benches W/Wood & Metal Tops  
 (20) Rubbermaid & Misc Metal Roll-A-Round Parts Carts  
 (5) Foreman Stands  
 Various Fireproof Rag Containers  
 Ideal Chemical Storage Shed on Skid 9' Deep x 15' Wide x 8' Tall w/2 Doors  
 (2) Propane & Gas Bottle Storage Cabinets  
 Misc. Pallet Racking & Metal Shelving  
 (40+) 4-Drawer File Cabinets

## MISCELLANEOUS

Milling Vices & Milling Trees  
 Several Air King High Velocity 20" Shop Fans  
 No. 1 Arbor Press  
 (5+) Goodway Industrial Wet/Dry Shop Vacs

Various Fiberglass Step & Extension Ladders  
 Binks Gravity Flow Paint Gun  
 Amp Probes & Simpson Multimeters  
 Air Hose & Extension Cords

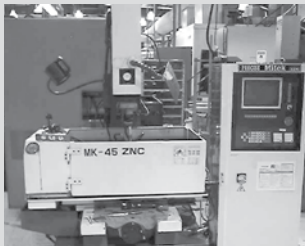
**PROXY BIDS:** If you are unable to attend this auction we will bid on your behalf. For more information visit [www.starmanauctions.com](http://www.starmanauctions.com) and click on "upcoming auctions" and scroll down to the Proxy Bid Section. Complete form and fax to (402) 592-2327 or call Steve Starman at (402) 681-6456 for more information.

**PAYMENT TERMS:** Cash, Certified Funds, or Company Check ONLY if accompanied by Bank Letter of Guarantee!! NO EXCEPTIONS!! Wire transfers will be accepted with a 20% non-refundable deposit day of sale in one of the forms listed above. We also accept MasterCard and Visa with an additional 3% Buyer's Premium applicable. This is in addition to the 5% Buyer's Premium.

**LOADING & REMOVAL:** Once an item is sold the winning bidder is responsible for its removal. Any cost responsibility and risk of removal of purchases remain with the buyer. Removal may begin after payment in full and must be completed by the posted deadlines. NO EXCEPTIONS or EXTENSIONS!! There may be various Riggers & Trucking Companies on site to arrange for transportation. However, it will be the buyer's responsibility to arrange their own trucking.

## THE FOLLOWING EQUIPMENT WILL BE SOLD AT THE TULSA AUCTION BUT WILL NEED TO BE PICKED UP AT THE PAS TECHNOLOGIES FACILITIES IN HILLSBORO, OHIO. The equipment will be sold from Pictures & Spec Sheets.

Mitek MK-45ZNC Electrical Discharge Machine S/N 0396385, X Axis Travel 12", Y Axis Travel 10", Ram Travel 6", Work Head Travel 8", Size of Work Table 24" x 12", Size of Working Tank 35" x 21" x 13"



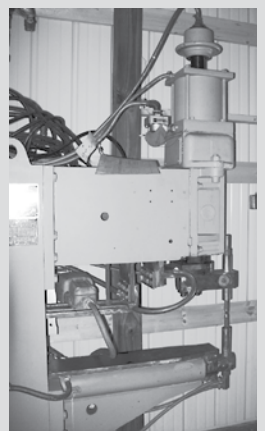
This Mitek MD-45 Ram EDM was purchased new in 1996 and removed from service in 2009 in working condition.

King Spark Mdl E-36P Electrical Discharge Machine S/N 312-4 w/CNC Orbit-Cut System, X Axis Travel 11.8", Y Axis Travel 7.9", Work Tank Size 32" x 19.7" x 11.8", has Programmable Power Supply and Z Axis



This King Spark Ram EDM was removed from service in 2006 in working condition.

H&H Resistance Spot Welder Type SPT2-40 S/N 7758, Throat Dimensions 10" x 30", Power Requirements 440V, 3 PH, 100 KVA at 50% Duty w/H&H Mdl 3PMC, 3-Ph Welding Control Panel



This welder was removed from service in 2008 and was in working condition. In 2007 the firing capacitors were converted to SCR's by H&H Technicians.



Comet Mdl MV-5 CNC Vertical Bed Milling Machine S/N 97012 w/Dynapath Autocon Delta 50, Travels X Axis 20", Y Axis 20", Z Axis 20", Taper Cat 40, Spindle 5 HP up to 3,800 RPM

This Mighty Comet MV-5 Mill was purchased new in 1998. The machine was removed from service in 2008 in working condition. The X Axis Servo was removed from the machine to repair another unit but the repaired servo is

being included with the sale to put the machine in working condition. Also included are several working spare parts.

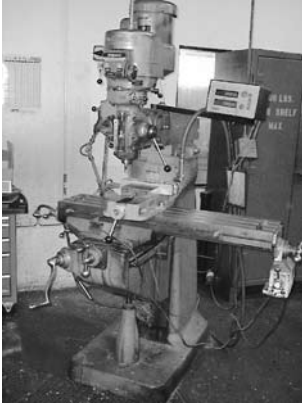
Magnaflux-Zyglol Modular Particle Inspection Line, this line consists of Mdl 4040 Penetrant Station w/Power Immersion Grill, Mdl 4040 Table Top Rinse Station, Mdl 4040 Dryer Station, Mdl 5472 Inspection Station (Black Light Booth), Swirl Cloud Developer Station & (4) Mdl 4040 Rest Station Drain Grills.

This Inspection Line was removed from service in 2008 in working condition.



# ON-LINE AUCTION

The following (13) Pieces of Equipment will be sold on an On-Line Auction. These pieces of equipment are located at PAC Technologies, Inc. facilities in Phoenix, Arizona. This equipment can be inspected at the Phoenix Facilities starting July 2nd by Appointment Only. You must call Steve Starman at (402) 681-6456 to arrange a viewing appointment. Bidding BEGINS July 7th at 9:00 A.M. (EDT) and ENDS on July 13th at 2:00 P.M. (EDT). For full details and to place your bids go to [www.starmanauctions.com](http://www.starmanauctions.com) and click on "Online Sales".



Bridgeport Series I, 2 HP Vertical Milling Machine, 9" x 42" 3-Slot Table, Spindle Speed 100 RPM to 4,200 RPM, Workhorse Mdl 250 Auto Table Feed Unit, Sargon Mdl 652 Digital XY Readout.



Ex-Cello Mdl 602 Vertical Milling Machine S/N 6028352, 1-1/2" HP, 46" x 9" 3-Slot Table, Spindle Speed 85 RPM to 4,000 RPM, Lyman Mdl MK-7 Power Feed Table Attachment, Has 5-1/2" Riser Block, Bridgeport 1812064 DRO.



LeBlond Regal Mdl 15" Engine Lathe Servo Shift, S/N 13C-295, 5'6" Bed Length, 15-1/2" Swing Over Bed, 9-1/2" Swing Over Cross Slide, High Low Speed Range 30 RPM to 1,800 RPM, Distance Between Centers 30".



(5) Cincinnati Milacron #2 Centerless Grinding Machines, Mdl OM's, Hyd Grinding Wheel Dresser, Capacity Short Work 1/16" to 3-1/2" Diameter, Bar Work 1/8" to 2" Diameter.



Amada Mdl HA-250 Automatic Horizontal Band Saw, S/N 25400-68, 3 HP Saw Blade Motor, Cutting Capacity Round 9.84", Rectangular 11.02" x 9.84", Speed 88 to 262 Ft/Min



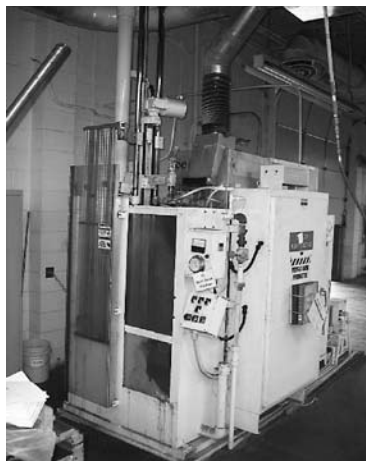
Fadal Mdl VMC-6030 HT CNC Vertical Machining Center, S/N 9208503, Has Fadal CNC-88 Control Unit, Table Size 30" x 62.5", Travels X Axis 60", Y Axis 30", Z Axis 30", Spindle Speed 40 to 10,000 RMP, Spindle Tapper No. 40, Main Motor 22.5 HP



Lepel Induction Heater Mdl T-40-3-KC-E-XW, S/N 7001, 92 KVA, Durant 6460 Sequence Controller, Quench Tank, Single Station Vertical Shaft up to 92"



Radyne/AKO Induction Heater Mdl EI-30, S/N 110331, 30 KW-440 KHZ, Dual Station Vertical Shaft up to 36", Quench Tank, Radyne/AKO Scanner Control System



Westinghouse Induction Heater Type 50K64, 30 KW, Single Station Vertical Shaft up to 70", Quench Tank

**STARMAN BROS. AUCTIONS INC.**

1240 Royal Drive ■ Papillion, NE 68046-2082  
(402) 592-1933 Fax: (402) 592-2327  
website: [www.starmanauctions.com](http://www.starmanauctions.com)

**STARMAN BROS. AIRLINE SERVICES, INC.**

**STARMAN BROS. AUCTIONS INC.**

1240 Royal Drive ■ Papillion, NE 68046-2082  
(402) 592-1933

Return Service Requested

PRSRRT FIRST CLASS

U.S. POSTAGE

PAID

MAIL U.S.A.

First Class

**AVIATION AUCTION**

**FRIDAY ~ JULY 10<sup>th</sup>, 2009**  
Starting at 10:00 A.M. (CDT)

**PAS TECHNOLOGIES**  
10325 East 58th Street~Tulsa, Oklahoma



**STARMAN BROS. AUCTIONS INC.**

1240 Royal Drive ■ Papillion, NE 68046-2082  
(402) 592-1933

**STARMAN BROS. AIRLINE SERVICES, INC.**