

AVIATION AUCTION

*Absolute
Auction*

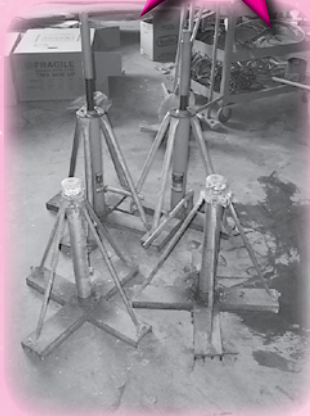
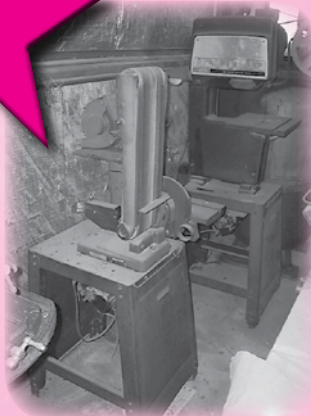
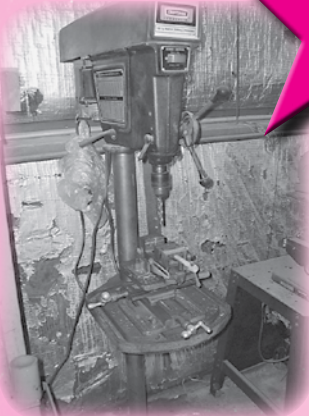
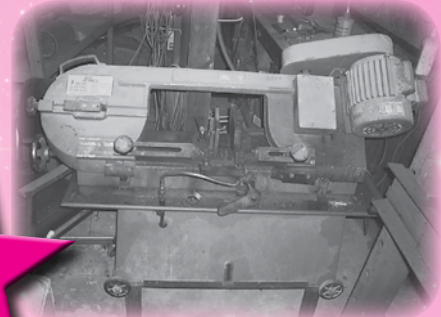
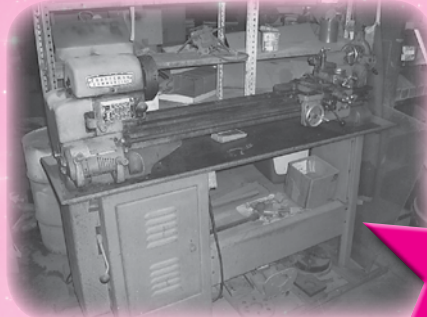
SATURDAY ~ APRIL 28th, 2012
Starting at 9:00 AM!!

RIVAIR FLYING SERVICE, INC.

8823 JACK BATES AVE. • R.L. Jones Riverside Airport • Tulsa, Oklahoma

The Hanger is the 2nd Hanger South of the Control Tower at R.L. Jones Riverside Airport.

AIRLINE CONNECTIONS: Most Major Airlines into Tulsa International Airport. Private Aircraft can Land at R.L. Jones Riverside Airport, Identifier is R.V.S.



SALE SITE PHONE: Scott Moore (402) 681-3652 or Steve Starman (402) 681-6456

OPEN HOUSE: Friday ~ April 27th ~ 9:00 A.M. to 4:00 P.M.

STARMAN BROS. AUCTIONS INC.

1240 Royal Drive ~ Papillion, NE 68046
4901 E Falcon Drive ~ Mesa, AZ 85215
(402) 592-1933 ~ (480) 396-0380

HOTELS:

HAMPTON INN & SUITES
7004 S. Olympia Ave. W. • Tulsa, OK
(918) 340-5000

HOLIDAY INN EXPRESS HOTEL & SUITES
150 Aquarium Dr. • Jenks, OK
(918) 296-7300

TULSA MARRIOTT
1902 E 71st St. • Tulsa, OK
(918) 994-4500

DAYS INN SOUTHERN HILLS/ORU
8888 S. Lewis Ave. • Tulsa, OK
(918) 299-8511

HILTON
7902 S. Lewis Ave. • Tulsa, OK
(918) 492-5000

Aircraft

1976 Cessna 421C
 N-44AR S/N 421-0338
 Total Time: 5,990 Hrs.
 Engines: Continental GTS10-520-L
 R/H Engine: 1,719 Hrs. S.M.O.H.
 L/H Engine: 106 Hrs. Since Complete Engine Tear Down, Inspection, & Repair for Metal Contamination.
 Props: McCauley 3-Blade
 Avionics: Cessna Switching Panel, Dual Cessna 800 Navs, Dual Cessna 800 Coms, Cessna 800 Transponder, Cessna R-Nav, Cessna 800 ADF, Bendix Radar, 800B Autopilot, Altitude Alert.
 De-Ice Boots, Hot Windshield, Good Paint & Interior, Last Annual Was Done 1/8/96, Aircraft Has Not Flown Since Annual Expired, Will Require Ferry Permit to Fly Out.



1973 Cessna 421B
 N-421CL S/N 421B-0480
 Total Time: 4,461 Hrs.
 Engines: Continental GTS10-520-H
 R/H Engine: 602 Hrs. S.M.O.H.
 R/H Engine: 218 Hrs. S.M.O.H.
 Props: McCauley 3-Blade
 Avionics: King KAA-445 Audio System, Dual Collins VIR-30's, Dual Collins VHF-20's, Dual King 750A Transponders, King KDM-705, King KDF-800, Garmin GPS-100, Airdata 6/RNC/Delta Area Navigation Computer, 800 Autopilot.
 De-Ice Boots, Alcohol Windshield, Newer Leather Interior, Last Annual was Done 11/1/01, Aircraft Has Not Flown Since Annual Expired, Will Require Ferry Permit to Fly Out.



Shop Equipment



Enco Mdl 130-5380 Sheet Metal Shear 48"



National Mdl U4816 Finger Brake 48"



Chicago 416 Sheet Metal Brake 46"



Craftsman Commercial 12" Lathe, 12" Swing, 40" Bed, Variable Speed, 3 & 4 Jaw Chuck, Face Plate, Steady Rest



- (2) Jack House 24" Aircraft Jacks
- (2) Jack House 36" 3-Ton Aircraft Jacks
- 30" 3-In-1 Sheet Metal Machine Shear, Press & Roller
- Quincy 2-HP Dual Stage Vertical Air Compressor
- Black & Decker 282/550 Type TD Wet Valve Re-Facer
- Repco Mdl 3600 Valve Spring Tester
- AC Spark Plug Cleaner/Tester
- Champion Spark Plug Vibrator
- No. 3 Arbor Press
- Dayton Bench Top 1" Belt, 8" Disc Sander
- Bench Top 5-Speed Drill Press



Enco 7" Horizontal Band Saw



- Craftsman 6" Belt 8" Disc Sander
- Craftsman 12" Band Saw
- (3) Craftsman Roll-A-Round Tool Boxes w/Top Boxes



Carolina 20-Ton H-Frame Press



- Sioux Angle Head Valve Seat Driver
- Oxygen Acetylene Torch Set & Cart
- Misc. Soldering Guns



- Craftsman 15-1/2" Variable Speed Drill Press
- Electric Parts Washer
- Bench Top Blast Cabinet
- Nitrogen Gauges, Cart & Bottle
- Myers Tier Bead Breaker
- 1-Ton Engine Hoist
- Central Pneumatic Paint Shaker
- Christie Mdl G-8 Armature Growler
- 2 HP, 10" Bench Grinder
- Misc Bench Grinders
- (2) Engine Build-Up Stands
- Tail Stands

Hand Tools

Several Pneumatic Drills & Rivet Guns
 Pneumatic Right Angle Drills
 Pneumatic Nibblers
 Pneumatic Sheet Metal Shear & Various Hand Shears
 Pneumatic Line Sanders
 Pneumatic Sanders
 Large Selection of Rivet Sets
 Cherry Rivet Pulling Heads & Cherry Hand Rivet Pullers
 Die Grinders
 Aviation Snips
 Several Cylinder Base Wrenches
 Ring Compressors
 Time Rite Indicator
 Eastern Cable Tester
 Cylinder Ball Hones
 Valve Spring Compressors
 Eastern Magneto Synchronizer
 Pacific Scientific T-5 Cable Tensiometer
 Imperial Tubing Benders
 Micropress Crimpers
 Tap & Dies
 Mac Hole Saws
 Sioux 7" Heavy Duty Grinder/Sander
 Chicago Pneumatic CP-214
 Bendix #11-8888 High Tension Lead Tester
 Milwaukee Heavy Duty Polisher
 Simpson 260 Multimeter
 Amp Crimpers & Pin Tools
 High Pressure Tire Gauge
 Dremmel Tool
 (2) Parker Beading Tool Sets
 Robinair Refrigerant Leak Detector
 Misc Paint Guns
 Mooney Landing Gear Tools
 Pliers of All Types, Screw Drivers, Combination
 Wrenches & Sockets
 Joy Bar Tow Bar
 Bracket Tow Bar



Landing Gear, Wheel & Brake Inventory

Approx. (100) Pcs. Of Landing Gear Inventory to
 Include Comanche Nose & Main Gear Upper
 Trunnions, Some New

Piper Nose Forks, Includes New

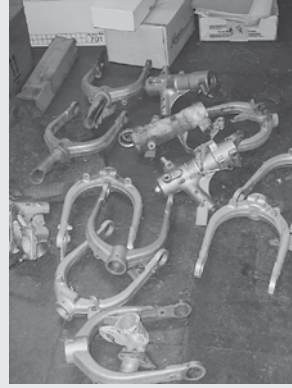
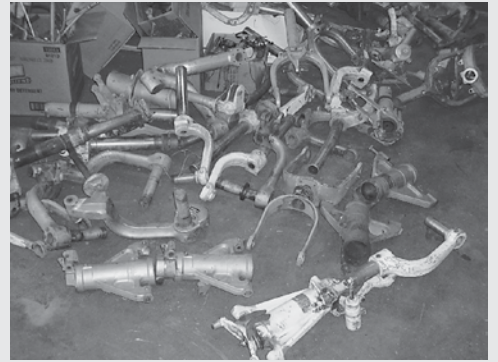
Complete Piper Nose Gear Assy.

PA-28 Main Gear Barrels & Assys

Piper Main Gear Axles & Barrels, Piper Main Gear
 Upper Trunnions

C-172 Nose Gear Fork & Barrels

Cessna Flat Spring Gears, Various Cessna & Piper
 Scissors, Retract
 Link, Etc.



New Piper & Cessna Firewall Fittings, Tubes, Mounts, Swivels, Etc.

Cessna Landing Gear Motor & Gear Box

C-300 Series Landing Gear Box

Cessna Landing Gear Barrels

Good Selection of Wheels & Wheel Halves includes 5", 6", 8" & Some 10"

Cessna & Piper Master Cylinders

As Removed Brake Calipers

Scott Park Brake Valves

New Cleveland Brake Linings



Mufflers & Exhaust

Good Selection of Cessna & Piper Mufflers & Exhaust Pipes (Includes Comanche), Including New Mufflers,
 Shrouds, Risers, Clamps, Pipes, Turbo Exhaust, Several A/R Pieces in Very Good Condition
 New Mufflers

Control Surfaces & Cowling

(2) New Comanche Rudders
 (10) Piper Twin Comanche PA-30 Stabilizers
 (6) Piper Flaps, Includes Rebuilt Ones
 (5) Comanche Rudders
 (5) Comanche Vertical
 (4) Piper Ailerons
 Piper Flaps



(5) C-172 Elevators
 (3) C-172 Rudders
 (4) Piper Horizontal Stabilizers
 C-172 Vertical & Rudder Assy
 C-150 & 172 Horizontal Stabilizers
 (4) Cessna Flaps, 150/172/210
 Cherokee & Misc. Vertical Fins



(2) Luscombe Elevators
 (2) Cherokee Top & Bottom Cowls
 (2) Piper Bottom Cowls
 Comanche 250 Top Cowl, Various New Piper
 Comanche Bottom Cowls & Tops, New Piper Cowl
 Panels

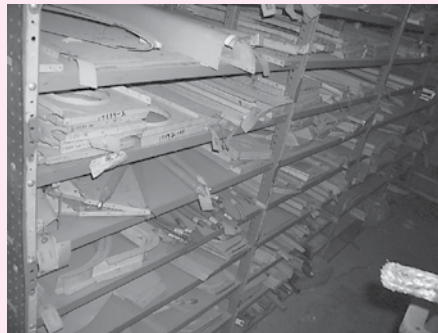
New & As Removed Cessna Airframe Inventory

There is a VERY LARGE Selection of New Cessna Airframe Inv that Includes Control Surface Spars,
 Wing Stringers & Formers, Several Control Surface Skins, Several Wing & Control Surface Ribs, New
 Control Surface Tips, Cowl & Fuselage Skins, Leading Edge Skins for Control Surfaces & Wings, Rudder
 Peddles & Inv., Bushings, Blocks, Shafts, Brackets, Battery Boxes, Control Surface, Ribs, Tubes, Decals,
 Spacers, Wing Ribs, Flap Tracks, Pulley Brackets, Steps, Firewall Fittings, Master Cylinders, Shimmy
 Dampers, Mounts, Gear Box Fittings,
 Trim Wheels, Control Surface Tips,
 Steering Rods, Steering Collars,
 New Cessna Cowl Doors, Shimmy
 Damper Inv., & Interior Parts,
 Bucking Plates

Cessna Rudder Peddle Assys & Bars
 Cessna Control Columns, Rollers,
 Rods



New & As Removed Piper Airframe Inventory



There is a VERY LARGE Selection of New Piper Airframe Inv that Includes Control Surface Spars, Several New Control Surface Skins, Wing Spars, Formers & Stringers, Large Selection of Wing & Control Surface Ribs, Leading Edge Skins for Surfaces & Wings, New Cowl Sections & Skins, Shrouds, Plates, Tubes, Lines, Cowl Latches, Landing Gear Arms & Scissors, Sprockets & Chains, Lines, Interior Inv., Wing & Control Surface Ribs, Stiffeners, Stringers, Blocks, Inspection Covers, Brackets, Rudder Peddles, Rod Ends, Seat Rail, Turn Buckles, Push/Pull Rods & Tubes, Bell Cranks, Fuel Tank Covers, Brackets, Landing Gear Mounts & Swivels, Landing Gear Links, Landing Gear Tubes, Landing Gear Bearings & Misc Inv., Stabilizer Fittings, Air Boxes, Instrument Panels, Door Handles, Control Surface Spars, Formers, Bulkheads, Etc.

New Comanche Cowling

Piper Rag Wing Ribs

(2) New Piper Flaps

Electrical Inventory

Electrical Inventory Includes Nav Lights, Rotating Beacons, Battery Cables, Regulators, Terminal Blocks
 Grimes Bulbs
 Rotating Beacons & Strobes

Miniature Bulbs
 Solenoids & Power Supplies

Accessories

MA-3A Carburetor
 MA-4-SPA Carburetor
 (2) MA-3-SPA Carburetors
 MA-4-5 Carburetor
 Misc Carburetor Bowls & Tops
 (2) Bendix RSA-5ADT Fuel Injection Servos
 50 & 100 Amp Alternators
 (10) Alternator Cores
 (2) 1200 Series Magnetos, O/H
 Slick & Bendix Magnetos
 (6) Generator & Starter Cores

Several Starter & Generator Housings, Armatures, Etc
 (26) Lycoming & Continental Oil Coolers
 (2) Airborne Fuel Pumps w/Tags
 (4) Prop Governors, Includes O/H Weldon Fuel Pump
 (9) Tach Generators, Includes O/H Outflow Valve
 Misc Wet Vac Pumps
 Turbo Charger Core
 Turbo Controllers

Crankcases, Sumps & Crankshafts

Continental O-300 Engine Core
 (2) Lycoming 360 Crankcases
 Lycoming O-235-C2C Crankcase, Crank, Cam & Rods
 Continental O-300 Crankcase
 Continental O-470 Crankcase
 (2) Lycoming 435/480 Crankcases
 (5) Lycoming O-320 & 360 Sumps
 (2) Continental O-300 Sumps, 5-Hole
 (3) Continental O-300 Accessory Cases
 (8) Lycoming Accessory Cases
 (3) Crankshafts

Cylinders

O/H GTSIO Cylinder
 (16) Lycoming 320/360/540 Cylinder Cores
 (10) Lycoming O-235 Cylinder Cores
 (6) Continental 470 Cylinder Cores
 (12) Continental 65/85 Cylinder Cores



STAR MAN BROS. AUCTIONS INC.

1240 Royal Drive ~ Papillion, NE 68046
 4901 E Falcon Drive ~ Mesa, AZ 85215
 (402) 592-1933 ~ (480) 396-0380

Engine Inventory

(10) Lycoming Starter Ring Gears, Includes New
Small Amount of New Continental & Lycoming Valve Guides, Bearings,
Pistons & Rings, Seats, Push Rods & Housings, Some Valves, Gaskets, Etc.
Continental Rocker Arms, Push Rods & Housings
Continental Starter Clutch Gears A/R & Various Other A/R Engine Inv
Some New Lord Mounts & As Removed Engine Legs

Hardware

Hardware includes a Large Selection of Solid Rivets, Adel Clamps, Clevis Bolts-
Drilled & Undrilled, AN Hyd Fittings, Hardware, Cabinets w/AN & MS Bolts, Nuts,
Fiber Nuts, Washers, Screws, Etc .

Fuel Tanks

(2) Piper Wing Tanks
(7) C-150/152 Fuel Tanks

Propeller Parts

Aprox. (20) Various Hartzell Prop Hubs

Miscellaneous

Various Cases of Oil
Misc Oil Filters
Shop Supplies to Include Scotch Brite, Sandpaper, Sanding Discs, Etc.
(3) Push Lawn Mowers
(3) Kerosene Heaters

Misc. Airframe Inventory

(15) Cessna & Piper Engine Mounts, Includes New J-3 & Comanche
Piper PA-28-180 Fuselage
Several Cessna Wheel Pants, Both Nose & Mains, Some Antique Wheel Pants
Several Cessna & Piper Trim Tabs Including Some New
New Control Surface Tips for Cessna & Piper
(20) Cessna & Piper Spinners
Mixture & Throttle Control Cables for Cessna & Piper
Cessna & Piper Control Surface Cables
Good Selection of New Control Surface Pulleys
As Removed Cessna Rudder Peddles
Several Backing Plates
Cessna Lift Struts, C-150 thru C-182
Cessna & Piper Nose Bowls
Cessna & Piper Control Yokes
New Grumman GA-7 Spinner & Misc Grumman Surfaces

Instruments & Avionics

(20) Instruments to include Gyro, Turn & Bank, Manifold Pressure Ind., Cluster
Gauges, ADF Ind., Air Speed Ind., Etc.
(7) David Clark Headsets
Telex Microphones
Garmin GPS-90
Misc Older Avionics Includes Receivers & Transmitters

Shelving, Cabinets & Benches

Good Selection of Gray Metal Shelving, 8" & 12" Shelves
Aprox. (5) 2-Door Metal Cabinets
Various Wood & Metal Shop Benches

Office Equipment

Glass Display Case
Various Metal Office Desks

File Cabinets & Chairs
Bookshelves

PAYMENT TERMS: Cash, Certified Funds, or Company
Check **ONLY** if accompanied by Bank Letter of
Guarantee!! **NO EXCEPTIONS!** Wire Transfers will be
accepted with a 20% non-refundable deposit day of
sale in one of the forms listed above. We also accept
MasterCard and Visa with an additional 3% Buyers
Premium applicable.

PROXY BIDS: If you are unable to attend this auction
we will bid on your behalf. For more info visit our
web site at www.starmanauctions.com and click
on Upcoming Auctions and scroll down to the
Proxy Bid Section. Complete form and fax to (402)
592-2327 or call Steve at (402) 681-6456.

AUCTIONEER'S NOTE: Starman Bros. Auctions, Inc. has
been contracted by the Successor Administrator of the
Estate of Marguerite Kostich to Liquidate all the Assets
of Rivair Flying Service, Inc., a Company that was
Owned by Herself and Her Husband, Walter Kostich.
This Auction will offer a Very Large Selection of New
Cessna & Piper Airframe Inventory as well as a Good
Selection of Shop Equipment. There are also (2) Cessna
421's that appear to be in Good Condition but have not
flown in a while.

Everything sells "AS IS, WHERE IS" with no warranties
implied or expressed. Neither the auctioneer nor
owners shall be liable for any incorrect description,
fault, or defect. Everything positively sells to the highest
bidder. Payment must be made in full day of sale. No
property removed until settled for. Auctioneer is not
responsible for accidents or stolen property. All counts
are approximate. Announcements made day of sale
takes precedence over all printed material.

LOADING & REMOVAL: Once an item is sold the winning bidder is responsible for its removal. Any cost responsibility
and risk of removal of purchases remain with the buyer. Removal may begin after payment in full and must be
completed by the posted deadlines. **NO EXCEPTIONS OR EXTENSIONS!** There may be various trucking companies
on site to arrange for transportation. However, it will be the buyer's responsibility to arrange their own trucking.

STARARMAN BROS. AUCTIONS INC.

1240 Royal Drive ■ Papillion, NE 68046
(402) 592-1933
www.starmanauctions.com

Return Service Requested

PRSRRT FIRST CLASS
U.S. POSTAGE
PAID
MAIL U.S.A.

First Class

AVIATION AUCTION

Absolute Auction

SATURDAY ~ APRIL 28th, 2012
Starting at 9:00 AM!!

RIVAIR FLYING SERVICE, INC.

8823 JACK BATES AVE. • R.L. Jones Riverside Airport • Tulsa, Oklahoma



STARARMAN BROS. AUCTIONS INC.

1240 Royal Drive ~ Papillion, NE 68046 ~ 4901 E Falcon Drive ~ Mesa, AZ 85215
(402) 592-1933 ~ (480) 396-0380