

AVIATION AUCTION

FRI, SAT & SUN ~ MAY 17TH, 18TH, 19TH, 2013
STARTING AT 9:00 AM ALL THREE DAYS!!

LARGE MOVING SALE FOR WENTWORTH AIRCRAFT, INC.

2825 13TH AVE SOUTH, MINNEAPOLIS, MINNESOTA

SPECIAL NOTE: There is limited parking for trailers!! If you are pulling a trailer plan on leaving it at your Hotel!
 If you are spotting a Semi-Trailer, Call Scott Moore for a RESERVED AREA!



SALE SITE PHONE:
 Scott Moore (402) 681-3652 or
 Steve Starman - (402) 681-6456

AIRLINE CONNECTIONS:
 Most Major Airlines into
 Minneapolis-St. Paul Int'l
 Airport. Auction is located
 approx. 8 Miles NW of Airport.

OPEN HOUSE:
 Thursday, May 16th
 8:00 A.M. to 5:00 P.M.

STARMAN BROS.
AUCTIONS INC.

1240 Royal Drive ~ Papillion, NE 68046
 4901 E Falcon Drive ~ Mesa, AZ 85215
 (402) 592-1933 ~ (480) 396-0380

HOTELS

Ramada-Mall Of America
 2300 E American Blvd.
 Bloomington, MN 55425
 (952) 854-3411
 Ask for STARMAN BROS
 AUCTIONS RATE!!!
 Fairfield Inn
 2401 American Blvd East
 Bloomington, MN 55425
 (952) 858-8475
 Best Western Plus
 1901 Killebrew Dr.
 Bloomington, MN 55425
 (952) 854-8200

Country Inn & Suites
 2221 Killebrew Dr.
 Bloomington, MN 55425
 (952) 854-5555
 Holiday Inn Express
 1601 American Blvd. East
 Bloomington, MN 55425
 (952) 854-1687
 Radisson Hotel
 1700 American Blvd. East
 Bloomington, MN 55425
 (952) 854-8700
 Sheraton Midtown
 2901 Chicago Ave. South
 Minneapolis, MN 55407
 (612) 821-7600

NOTE: Most of these Hotels are near the Int'l Airport. There are some Hotels closer to the sale site if you prefer to stay closer.

Check Out Our Web Site... www.starmanauctions.com

PROJECT AIRCRAFT

Photos available at STARMANAUCTION.COM

1971 CESSNA 172L PROJECT – N-7766G

5,532 Hrs. A.F.T.T.

Light damage on Wings and Firewall area, Good Cowling, No Engine. Has Logs, Bill of Sale & Airworthiness Certificate.

1980 CESSNA 172P PROJECT – N-51745

8,463 Hrs. A.F.T.T.

Firewall damage, Has Interior, Seats & Some Instruments, No Engine. Has Logs, Bill of Sale & Airworthiness Certificate.

1980 CESSNA 172N PROJECT – N-6410F

3,492 Hrs. A.F.T.T.

180 HP STC Paperwork, Newer Interior, No Engine. No Logs or Paperwork.

2009 AMERICAN CHAMPION 7GCAA PROJECT – N-518F

273 Hrs A.F.T.T.

Heavy Damage to Wings & Front Cabin Section, No Engine. Has Logs, Bill of Sale & Airworthiness Certificate.

1976 CESSNA U-206F – N-8737Q

Approx 2,500 Hrs. A.F.T.T.

Wipline 3450 Amphibian Floats (also damaged), No Engine. No Logs or Bill of Sale. Parts Airplane Only.

1956 BEECH F-35 BONANZA PROJECT – N-4273B

4,307 Hrs. A.F.T.T.

Wing Damage, Has Most Instruments, Sells w/Continental E225-8 Engine w/660 Hrs. S.M.O.H. Has Airframe & Engine Logs, Bill of Sale & Airworthiness Certificate.

1948 BEECH A-35 BONANZA PROJECT – N-541B

Sells w/Continental E-185-11 Engine w/380 Hrs. S.M.O.H. Has Airframe & Engine Logs, Bill of Sale & Airworthiness Certificate.

1968 SIAI-MARCHETTI 205-22R PROJECT – N-971WA

2,542 Hrs. A.F.T.T.

Heavy Damage to Fuselage, Wings, Surfaces, Etc., No Engine. Has Logs, Bill of Sale & Airworthiness Certificate.

1951 PIPER PA-22-125 TRI-PACER PROJECT

1,860 Hrs. A.F.T.T.

Some Airframe & Wing Damage, No Engine. Has Log Book Copies, Bill of Sale & Airworthiness Certificate.

LANDING GEAR



(8) Cessna 200 Series Nose Gear Trunnions
Piper PA-23 & PA-24 Main & Nose Gear Assys
Piper PA-46 MLG Assy
Piper PA-46 Upper Trunnions
Bonanza Nose Gear Assys
Beech Skipper Nose Gear Inv.
PA-34 L/G Legs & Inv
PA-34 L/G Trunnions
Piper Cherokee MLG Assys
Cessna Nose Gear Upper Trunnions & Barrels to Include 150/152/172/182 & 200 Series
Cessna 177 Nose Gear Inv
PA-24 Nose Gear Upper Barrels
Cessna RG Nose Gear Trunnion & Barrel Assys
Cessna RG Main Gear Pivot Mounts
Cessna RG Nose Gear Actuator Mounts
(50+) Cessna Nose Gear Fork & Barrel Assys for C-150/152/172
(20+) Cessna & Piper L/G Power Packs
Mooney M-22 MLG Assy



Mooney L/G Inv
Good Selection of Cessna 200 Series Steering Arms & Inv
(30) Cherokee MLG Upper Trunnions
(40+) Piper Nose Gear Forks
Cherokee 140/180 Nose Gear Barrels
Piper Nose Gear Steering Bungees & Sliders
Very Large Selection of Arrow & Lance Scissors
Good Selection of Comanche Nose & MLG Upper Trunnions, Scissors & L/G Inv
Cessna Firewall Mounts for Most Aircraft Models
Tri-Pacer L/G Assys
Good Selection of Scott & Maul Tail Wheel Assys & Inv.
Cessna L/G Pivots & Mounts
Various Accumulators
Beech L/G Boxes
Beech L/G Braces
Beech L/G Donuts
Musketeer L/G Assys
Large Selection of Bonanza MLG Assys
Beech & Piper L/G Retract & Steering Rods
Good Selection of Cessna L/G Box, Fuselage Sections
Large Selection of Piper L/G Actuators
Mooney Gear & Inv



Bellanca Barrels & L/G Inv
Bonanza Nose Gear Upper Trunnions
Large Selection of Cessna Nose Gear Barrels
Cessna Piper & Beech L/G Scissors
Tube Style Cessna Gear for Retract & Stiff Leg Models
Diamond L/G Inv
Cessna Steering Rods
Comanche/Twin Comanche L/G Mount Plates
Hundreds of Axles (Nose Gear & Main Gear)
Very Large Selection of Piper Lower Trunnions
Various Gear Doors
Large Selection of Beech Lower Trunnion/Axle Assys
Large Selection of Spring Gear for C-140/150/170/172/180/182/205/206/210, Both Early & Late Styles
Note: There is A Large Amount Of Landing Gear Inv at This Auction

WHEEL & BRAKE INV.

(100+) 5", 6" & 8" Wheels to Include
Cleveland, McCauley & Goodyear
Large Selection of Wheel Halves, Various
Sizes
Scott Tail Wheel Assys & Inv
Good Selection of Master Cylinders
Very Large Selection of Single & Dual Puck
Calipers
Caliper Torque Plates
Brake Discs
Very Large Selection of Piper Parking Brake
Assys
Piper Brake Reservoirs
Wheel Covers
Tires of Various Sizes

MUFFLERS, EXHAUST & ENGINE MOUNTS

Large Selection of Exhaust Mufflers & Pipes
For Various Aircraft Models
Exhaust Clamps & Heat Shields
Cessna and Piper Engine Mounts
Turbo Exhaust & Turbo Transitions

WINGS

- (2) Cherokee Six Wings
Warrior Wing
Arrow Wing
- (2) Cherokee 140 Wings
C-172S L/H Wing
- (4) C-172 Long Range Wings
 - (3) C-172 Wings
 - (2) C-210 Wings
 - Cessna 150 Wing
 - (2) Piper Colt Wings
- (2) Remos G3X Light Sport Wings

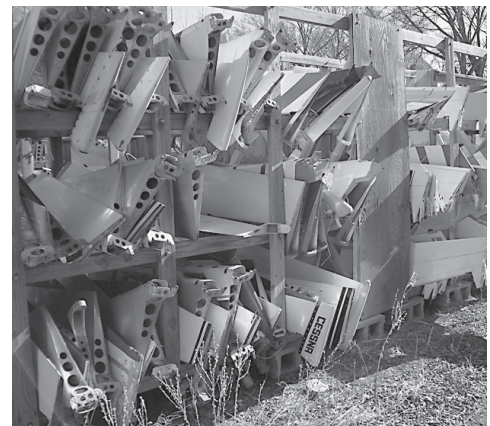
SPINNERS & BACKING PLATES

(50+) Spinners for 2 & 3-Blade Props
100's of Spinner Backing Plates

AIR BOXES

100's of Air Boxes for PA28, PA28R, PA34,
PA32, PA38, Cessna 150/152, 172, Various RG
Models, 210, Mooney, Bellanca, Beech

CONTROL SURFACES



- (50) Cessna 172/182/210 Rudders
- (20) C-182 Elevators
- (100) C-172 Elevators
- (30) C-150/152 Rudders
- (22) Cessna 182 Flaps
- (12) C-170 Rudders & Elevators
- (10) C-140 Rudders & Elevators
- (7) C-140 Ailerons
- (100) Cessna Ailerons
- (15) Cessna 200 Series Elevators
- (15) C-180/182 Elevators
- (35) C-150 Elevators
- (20) Cessna 200 Series Flaps
- C-210 Flaps
- (35) Cessna 150/152 Flaps
- (75) C-172 Flaps
- (28) C-150 Vertical Stabilizers
- (20) Cessna 150/152/172/182 Horizontal
Stabilizers
- C-177 Vertical Stabilizers
- (25) C-172 Vertical Stabilizers
- PA-24-250 Flaps
- PA-24 Rudders & Ailerons
- (6) PA-34 Rudders
- (45) Cherokee Rudders
- (70) Cherokee Ailerons
- (80) Piper Flaps
- PA-28 Ailerons
- Comanche Horizontal Stabilizers
- (15) Piper Stabilizers
- Tri Pacer Rudders, Elevators & Stabilizers
- (10) Tomahawk Elevators
- (12) Tomahawk Ailerons
- (10) Tomahawk Rudders
- (25) Musketeer Ailerons

PA-30 Vertical Stabilizers
(15) Cherokee Vertical Stabilizers
(12) Lance Rudders
Baron Vertical & Horizontal Stabilizers
Bonanza Horizontal Stabilizers
Beech Flaps for Various Aircraft Models
Baron Elevators & Flaps
(15) Beech Bonanza Elevators
Debonair Vertical Stabilizers
(10) Bonanza Ailerons
Baron Horizontal Stabilizers
Grumman Control Surfaces
Several Mooney Flaps
Large Selection of Bellanca Control Surfaces
(12) M-20 Elevators
SR-22 Rudders & Control Surfaces
Mooney Elevators & Rudders
Trim Tabs for C-182/172/PA-24/PA-34/PA-23/
PA-28/C177/B95/V35, Etc
Note: Most Have Little or No Damage and Counts
will Grow by Auction Time



AIRFRAME INVENTORY

Hundreds of Fuel Selectors & Gascolators for
Most Aircraft
Cessna Header Tanks
Large Selection of Pitot Tubes for Piper &
Cessna, Heated & Standard
Very Good Selection of Lift Detectors Ventures
Good Selection of Cessna Trim Actuators
Large Selection of Steps
Stand-by Vacuum Valves
Beech Flap Actuators
Bonanza Escape Windows
Cessna Carry Thru Spars
Cherokee Upper Door Latches

Large Selection of Battery Boxes
Cessna Fuel Tanks
100's of Cessna, Piper, Beech, Mooney & Bellanca
Control Yokes for Various Aircraft Models to
Include Beech Single Throw
Cessna Stinger Sections for Various Aircraft
Models
Various Robinson R-22 & Hughes 269 Helicopter
Inventory
Very Large Selection of Airframe Inventory For
Most Single Engine Aircraft Types to Include
Fuel Caps, Throttle Cable Supports, Door Hinges,
Door Latches & Handles, Door Strike Plates,

Inspection Plates, Control Surface Bell Cranks,
Tie Down Rings, Cessna Flap Handles, Throttle
& Mixture Quadrants, Trim Handles & Wheels,
Vent Windows, Push/Pull Rods, Control
Cable, Pulleys, Fuel Sending Units, Lift Strut
Fairings, Landing Light Lenses & Fittings,
Control Columns, Rudder Pedal Assys.,
Control Surface Tips & Counterweights, Fuel
Cap Covers, Lift Strut Steps, Vacuum Filters,
Yoke Collars, Wing Fillet Panels, Intake Ducts,
Cables, Cabin Doors, Hardware, Lines &
Hoses, Etc.

COWLING



(80+) Cessna Bottom Cowls for
170/175/172/182/180/172-XP, 172 Avcon
Conversion, 150/152/172RG/177 Aircraft Various
Damage
(60) Cessna Top Cowls for Various Aircraft
Models
Good Selection of Cessna 200 Series Cowl Panels
Various Models of Piper Cowling
Piper Bottom Cowls
Good Selection of Cherokee + Warrior Top Cowls
Cessna Nose Bowls
Tri-Pacer Cowl Inv.
Cowl Flaps for Cessna, Piper, Beech & Mooney
Cowl Oil and Inspection Doors



WING TIPS & WHEEL PANTS



100's of Wing Tips for Most Cessna, Piper &
Beech Aircraft to Include High Lift Style
Beech & Piper Tip Tanks
(150+) Main & Nose Wheel Pants for
Cessna & Piper Aircraft

ELECTRICAL & LIGHTING INVENTORY

Large Selection of Electrical to Include Circuit
Breaker Panels, Ignition Switches, Dimmer
Controllers, Solenoids, Voltage Regulators,
Blower Motors & Fans, Rheostats, Map
Lights, Circuit Breakers, Rocker Switches,
Vacuum Switches, Trim Switches, Master
Switches, Alternator Controllers, Stall
Warning Horns, Plugs & Connectors, Wire
Looms, Etc.

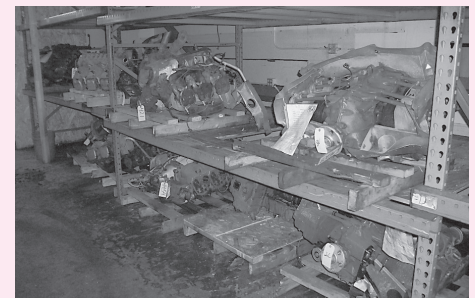
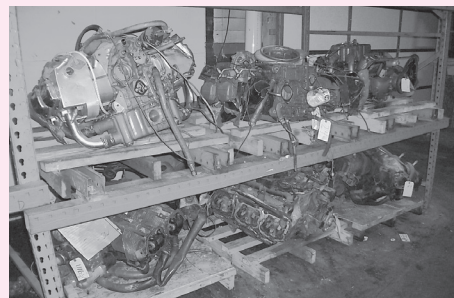
(100+) Flap Motors 12 & 24 Volt for Cessna,
Piper, Beech & Mooney Aircraft
Large Selection of Grimes, Aeroflash, Cessna
& Hoskins Strobe Power Supplies
Very Large Selection of Beacons, Strobe & Nav
Lights for Various Aircraft
Nav Light Bases & Lenses
APU Plugs

PROPELLERS & INVENTORY

Sensenich 74DC-0-54 Fixed Pitch Prop
Sensenich 74DC-0-56 Fixed Pitch Prop
Sensenich 72CKS6-0-52 Fixed Pitch Prop
Good Selection of Prop Spacers
(30+) Constant Speed Props w/Variou
Damage

(10+) 3-Blade Props w/Variou
Damage
(50+) 2+3 Blade Prop Hubs
Various Prop Blades
Damaged Fixed Pitch Props

CONTINENTAL & LYCOMING ENGINES



Lycoming TIO-540-AE2A Engine, 12
Hrs. S.M.O.H., Crash Damaged
Lycoming IO-540-K1A5 Engine
Lycoming IO-540-K1A5 Crash
Damaged Engine, Front Cylinder
Damage
Lycoming IO-540-K1G5D Engine,
Broken Sump
Lycoming IO-360-A1A Engine, 192 Hrs.
S.M.O.H., Missing Sump
Lycoming IO-360-A1B6D Engine, 1,000
Hrs. S.M.O.H., Crash Damaged
Lycoming IO-360-A1A Engine, Prop
Strike
Lycoming O-360-A3A Engine, Crash
Damaged, Broken Flange
Lycoming IO-360-B1E Engine, No
Flange, Crash Damaged
Lycoming IO-360-A4A Engine, No
Flange
Lycoming IO-320-C1A Engine, 622 Hrs.,
Broke Flange
Lycoming IO-320-B1A Engine
Lycoming O-320-D1A Engine, 1,744
Hrs. T.T., Fire Damage
Lycoming O-320 Wide Deck Engine, No
Data Tag, Minor Damage
Lycoming O-320-D2J Engine, Crash
Damaged
Lycoming O-320-A1A Engine, Prop
Strike
Lycoming O-320-A2B Engine, Prop
Strike, Crash Damaged
Lycoming O-320-D3G Engine, Prop
Strike, Crash Damaged
Lycoming O-320 Wide Deck Engine, No

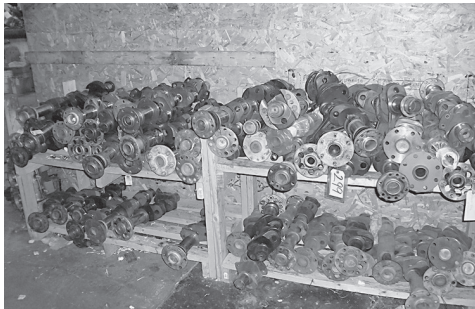
Data Plate, Prop Strike
Lycoming O-235-L2C Engine, 2,200 Hrs.
S.M.O.H., Crash Damaged
Continental IO-520C Engine, 200 Hrs.
S.M.O.H., Broken Case & Shaft
(2) Continental IO-520-C Engines,
830 Hrs. S.M.O.H., Both Missing
Crankshaft Flanges
Continental C90-14F Engine, No
Flange, Crash Damaged
Continental IO-470-C Engine, No
Damage, Partial Logs
Continental IO-360-C Engine, Broken
Flange
Continental E-225-8 Engine, No
Damage
Continental E-225 Engine, Crash
Damaged
Continental O-300-D Engine, 130
Hrs. S.M.O.H., No Sump, Very Minor
Damage
Continental O-300-D Engine, 526 Hrs.
S.M.O.H.
Continental O-300-A Engine, 950 Hrs.
S.M.O.H., Damaged Sump
Continental O-300-D Engine, 1,550 Hrs.
S.M.O.H., Prop Strike
Continental O-300D-Engine, 1,200 Hrs.
S.M.O.H., No Damage
Lycoming O-360-A4K Engine, No
Cylinders
Lycoming O-235-L2C Engine, No
Cylinders, Bent Flange
Note: Engine List Is Expected To Grow
By Sale Day

CYLINDERS & CRANK CASES



- 100+) Lycoming 360/540 Cylinders, Some Narrow Deck
 (27) Lycoming 320 Cylinders
 (23) Lycoming H2AD Cylinders
 (12) Lycoming 235/290 Cylinders
 (50) Continental 470/520 Cylinders
 (30) Continental O-200/300 Cylinders
 (5) Continental IO-360 Cylinders
 Continental IO-550G Crank Case, Damaged
 Lycoming O-235 Crankcase
 Continental O-200 Case, Damaged

CRANKSHAFTS & CAMSHAFTS



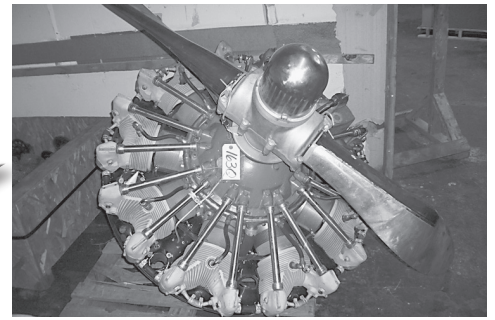
- (65) Continental & Lycoming 4 & 6-Cyl Camshafts
 (40+) Continental & Lycoming Crankshafts To Include IO-540, 320, 360, 235, 65, 200, Etc.

INTERIOR INV.

Interior Inventory to Include Vents, Seat Rail, Door Grab Handles, Glove Boxes, Plastic, Center Consoles, Cabin Heat Boxes, Vent Covers, Eyeball Vents, Interior Lights, Reading Lights, Speaker Grills, Mirrors, Door Plastic, Instrument Panels, Glare Shields, Seatbelts, Inertia Reels, Headrests, Armrests, Glove Box Doors, Seatbelt Latches, Visors, Seats & Cushions, Hat Shelves, Ashtrays, Interior Panels, Etc.

PRATT & WHITNEY ENGINES

- (2) PT-6 AG Engines Heavy Crash Damage, No Logs
 (2) R-985-14B Engines

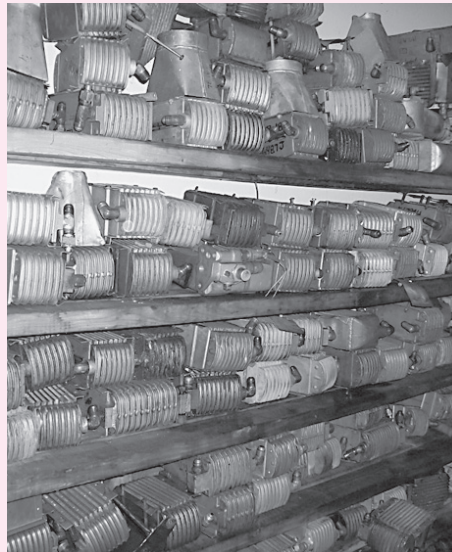


CONTINENTAL & LYCOMING ENGINE INV.

- (100+) Continental & Lycoming Connecting Rods
 Lycoming & Continental Tappet Bodies & Lifters
 Continental & Lycoming Rocker Arms
 Good Selection of Continental & Lycoming Push Rods
 Lycoming Accy Drives
 Internal Engine Gears

- Continental & Lycoming Intake Tubes
 Continental O-200/300 Intake Elbows
 Good Selection of Engine Mount Legs
 Good Selection of Used Lord Mounts
 Primer Lines
 Large Selection of Continental Engine Crossover Tubes
 Continental and Lycoming Pistons

ACCESSORIES & SUMPS



- (3) MA-4SPA Carburetors
 RSA-5 & 10 Fuel Injection Servos
 NAR-6D Carburetors
 (8) Right Angle Starter Drives
 (30) Magnetos
 (25+) Prop Governors
 (30+) Vac Pumps & Motors
 (200+) Oil Coolers
 (20+) Alternators & Generators
 (80) Starters
 (40) Dukes, Weldon & Airborne Fuel Boost Pumps



- (100+) Electric Fuel Pumps
 (30+) Intercoolers
 Oil Cooler Backing Plates
 (40) Lycoming Oil Sumps for 235, 320, 360 & 540 Models
 (60) Lycoming Accy Cases
 (5) Kidney Sumps
 Continental Oil Pans
 Accy Drive Pads
 Good Selection of Mag Harness
 Turbo Chargers & Inv.

INSTRUMENTS

- (1000+) Instruments to Include Turn & Banks, Course Indicators, Digital EGT's, Attitude Gyros, Amp Meters, DC Load Meters, CHT Gauges, Tachometers, Compasses, Horizon Gyros, Air Speed Indicators, Altimeters, Rate of Climb Indicators, Fuel Flow Indicators,

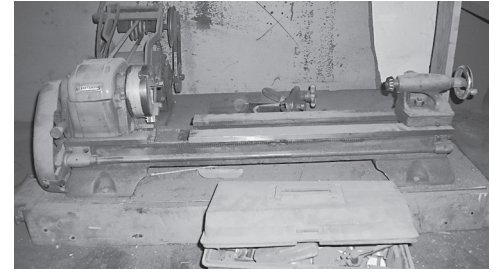
- Manifold Gauges, Fuel Pressure Indicators, Vacuum Gauges, Fuel Gauges, Clocks, Etc.
 Very Large Selection of Cluster Gauge Inserts & Covers

SHOP EQUIP. & AVIONICS TEST EQUIP.



Barth 36" 18-Gauge Sheet Metal Brake
 Craftsman Bench Top Lathe, 2' Bed, 8" Swing,
 Belt Driven, Variable Speed
 Bench Top Scroll Saw, 16" Throat
 Hardware Cabinet w/Hardware
 Radial Engine Transport Stand
 Lambda AC Power Supply
 Fluke 8800A Digital Multimeter
 Beechcraft Fuel Gauge PC Board Test Box
 Magna-Star Flite Phone Field Test Set P/N
 725481-801/802
 Collins CTS-451 Plug-In Module
 Tektronix TM-515 Oscilloscope
 (2) Turn Coordinator Amp Test Boxes
 HP 435A Power Meter

3001 Digital Capacitance Meter
 Goldstar FC-2130U Universal Counter
 (2) Oscilloscopes
 ETCO 378 Audio Generator



RADIOS & AVIONICS

King KI-525 Pictorial Nav Displays
 Edo 52C77-3 Flight Director
 King KG-258 Horizon Gyro
 (8) King KI-208 Indicators
 (4) King KI-203 Indicators
 HSI-610-1
 Narco Nav 122 Display
 WX-1000 Storm Scope Processors
 WX-900 Strike Finders
 WX-12 Storm Scope Processor
 WX-11 Strike Finders
 WX-10 Strike Finders
 Several WX-10A Storm Scope Processors
 Ryan ATS-9000 Processor Unit
 (15) Storm Scope Antennas
 Collins WXT 200A Receiver/Transmitter
 (4) Horizon 7700-S2 Display Monitors
 Insight Strike Finders
 (4) Garmin GPS-100
 King KLN-89B GPS
 (2) ARNAV 5000 GPS
 North Star M3 GPS
 King KN-90B GPS
 (6) Narco Com IIA
 (2) Narco Com III
 Several King KX-170/175B Nav Coms
 Collins VHF-250 Coms
 Collins VIR-351 Navs
 King KG-102 Directional Gyro

Stec 6444 Gyro
 RT-485 Digital Nav/Com
 Mitchell 1U367 Attitude Gyro
 Sperry DG-401 Gyro
 Narco ID-824 Indicators
 King KMA-24 Audio Panels
 Terra TMA-350D Audio Panel
 Narco CP-136 Audio Panel
 Good Selection of Flight Com, David Clark Sigtronix, PS
 Engineering & NAT Panel Mount Intercoms
 WSI AV-200's
 King KI-266 DME Indicators
 Collins GLS-350 Glide Slope Receivers
 King KN-75 Glide Slope Receivers
 King KN-73 Glide Slope Receivers
 Collins ID-351 Indicators
 Narco PDF 35's
 Collins ADF 650A's
 (2) King KR-87 ADF
 Several King KR-85 ADF's
 Narco ADF-101 Indicators
 Narco 190 DME
 Collins ANS-31C Nav Controller
 Various Models of Lorans
 Insight Graphic Engine Monitor Indicators
 Autopilot Controllers
 ELT's + Batteries
 Large Selection of Antennas



STARMAN BROS. AUCTIONS INC.



1240 Royal Drive ~ Papillion, NE 68046
 4901 E Falcon Drive ~ Mesa, AZ 85215
 (402) 592-1933 ~ (480) 396-0380

ATTENTION

Due to the number of sales this spring, we will NOT be having our Annual Spring Consignment Auction in Yukon, Oklahoma this June. If you would like to deliver Inventory throughout this year for our Fall Consignment Auction in November Call (402) 592-1933 to make arrangements.

AUCTIONEER'S NOTE

After 15 Years in their current building, Wentworth Aircraft is moving to a new location. They have contracted with Starman Bros. Auctions, Inc. to liquidate a large portion of inventory rather than moving it to the new location. This auction will have LARGE QUANTITIES of Parts for most Single and Light Twin Aircraft.

Everything sells "AS IS, WHERE IS" with no warranties implied or expressed. Neither the auctioneer nor owners shall be liable for any incorrect description, fault, or defect. Everything positively sells to the highest bidder. Payment must be made in full day of sale. No property removed until settled for. Auctioneer is not responsible for accidents or stolen property. All counts are approximate. Announcements made day of sale takes precedence over all printed material.

PAYMENT TERMS

Cash, Certified Funds, or Company Check ONLY if accompanied by Bank Letter of Guarantee!! NO EXCEPTIONS! Wire Transfers will be accepted with a 20% non-refundable deposit day of sale in one of the forms listed above. We also accept MasterCard and Visa with an additional 3% Buyers Premium applicable.

PROXY BIDS

If you are unable to attend this auction we will bid on your behalf. For more info visit our web site at www.starmanauctions.com and click on Upcoming Auctions and scroll down to the Proxy Bid Section. Complete form and fax to (402) 592-2327 or call Steve at (402) 681-6456.

LOADING & REMOVAL

Once an item is sold the winning bidder is responsible for its removal. Any cost responsibility and risk of removal of purchases remain with the buyer. Removal may begin after payment in full and must be completed by the posted deadlines. NO EXCEPTIONS OR EXTENSIONS! There may be various trucking companies on site to arrange for transportation. However, it will be the buyer's responsibility to arrange their own trucking.

SPECIAL NOTE

There is limited parking for trailers!! If you are pulling a trailer plan on leaving it at your Hotel! If you are spotting a Semi-Trailer, Call Scott Moore for a RESERVED AREA!



1240 Royal Drive ■ Papillion, NE 68046
(402) 592-1933
www.starmanauctions.com

Return Service Requested

PRSRT FIRST CLASS
U.S. POSTAGE
PAID
MAIL U.S.A.

First Class

AVIATION AUCTION

***FRI, SAT & SUN ~ MAY 17TH, 18TH, 19TH, 2013
STARTING AT 9:00AM ALL THREE DAYS!!***

LARGE MOVING SALE FOR
WENTWORTH AIRCRAFT, INC.

2825 13TH AVE SOUTH, MINNEAPOLIS, MINNESOTA



1240 Royal Drive ~ Papillion, NE 68046 ~ 4901 E Falcon Drive ~ Mesa, AZ 85215
(402) 592-1933 ~ (480) 396-0380