

# AVIATION AUCTION

Assets surplus to the ongoing needs of  
**ALAMEDA AEROSPACE**

**120 W. ORISKANY AVE., ALAMEDA, CA.**  
 Located on the Former Naval Air Station

**Wednesday, February 9<sup>th</sup>, 2011**  
 Starting at 9:30 A.M.

**Sale Site Phone: Scott Moore (402) 681-3652**  
**Steve Starman (402) 681-6456**

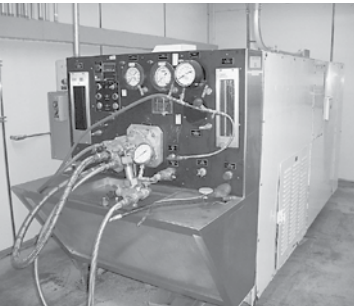
**Airline Connections: Commercial Airline**  
 Flights into Oakland or San Francisco Intl. Airports.

## ABSOLUTE AUCTION

### HOTELS

Hawthorn Suites 1628 Webster St. Alameda, CA 94501 (510) 522-1000	Executive Inn & Suites 1755 Embarcadero Oakland, CA 94606 (510) 536-6633
Homewood Suites 1102 Embarcadero Oakland, CA 94606 (510) 663-2700	Days Inn 1925 Webster St. Alameda, CA 94501 (510) 521-8400

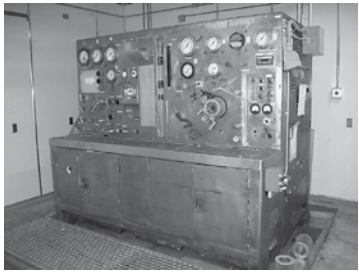
## Hydraulic Test Benches



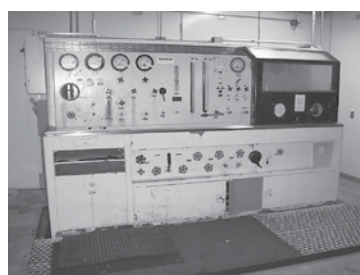
American Lab & Systems Hydraulic Pump Test Bench, Skydrol Fluid, US Motors 60hp Dual Varidrive (Low Side 2350 – 9000 RPM), Single Pad Pump Mount, Analog Flow and Pressure Meters, Digital Tach, Clockwise and Counter Clockwise Drive, Flow Meter, Heat Exchanger



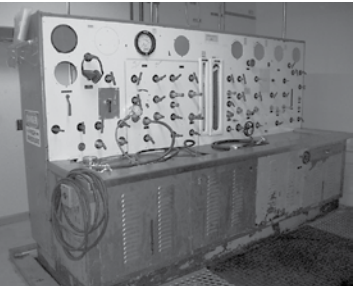
American Lab & Systems Mdl. 86AP198 Hydraulic Pump Motor Test Bench, S/N 147, 5606 Fluid, Dual 50hp Motor & Pumps, Hydraulic Driven Single Pad Drive, Digital & Analog Pressure and Flow Meters, 10-15,000 RPM, 3500 PSI, 20 GPM, Computer Display Flow Meter, Mfd. 11-17-89



Gayston Corporation Mdl. HCT-6 Hydraulic Pump & Actuator Test Bench, Skydrol Fluid, 30hp Varidrive (1100-7300 RPM), 4500 PSI Max, 20 GPM, 40hp Hyd. Pump Motor, Single Pad Drive, Clockwise and Counter Clockwise Drive



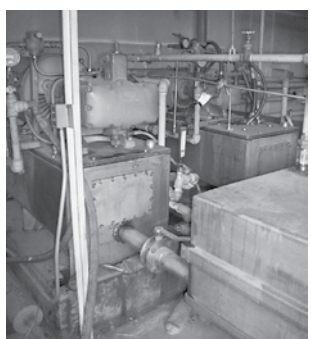
Sprague Mdl. S-429 Type 603-100 Hydraulic Actuator Test Bench, S/N 28, Skydrol Fluid, 40hp Motor Adjustable Flow Pump, 3800 PSI Max, 22 GPM, Dual Flow Meters, Dual Station, Water Cooled, Dual 3 Micron Filters



Hydraulic Actuator and Pump Test Bench, 5606 Fluid, 3500 PSI, 20 GPM, 30hp Hydraulic Pump Motor, Single Pressure Gauge, Dual Flow Meters, Multiple Line Hooks

Sprague Mdl 78766 S/N 2704 Hydraulic Test Bench, 40 HP Pump Motor, 20 GPM at 3000 PSI or 12 GPM at 5000 PSI

- ★ Hydraulic Test Bench Pump Assy., 125 H.P. 3ph Motor, w/Dennison Hyd. Pump (5000 PSI Max) and 100 Gallon Holding Tank
- ★ Hydraulic Test Bench Pump Assy., 30 H.P. 3ph Motor, w/Dennison Hyd. Pump (3000 PSI Max) and 100 Gallon Holding Tank



### Forklift

Caterpillar M20 Electric Forklift, 2000lb Capacity, Solid Rubber Tires, Charger

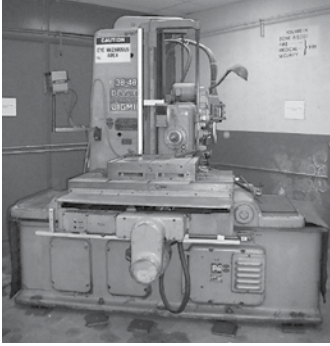
## APU's & Power Module

GTC95-2 APU  
 GTC95-98DCP APU  
 GTC95-397 APU  
 GTC95-395 APU  
 T56-14 Turbine Power Module with FCU and Accessories  
 APU's Have most accessories and are traceable to a 145 Repair Station.

**A 5% Buyers Premium will be charged to all purchases at this auction.**

# Shop Equipment & Hand Tools

Atlas Capco Mdl. GA55 75hp Single Stage Water Cooled Screw Compressor, Oil Injected, 559 CFM Max, 182 PSIG Max Working Pressure



Granier & Associates Mdl. G610M Type 2 AC/DC Magnaflux Test Bench, Mag / De-Mag, 10' Bed, AC & DC Input 230/460 3ph, Max Output 6000 Amps DC - 5000 Amps AC, Mfd. 1987

Magnaflux Mdl. M-6B Mag Bench, 6ft Bed, 220 Volt, 1ph

Trinco Mdl. 36BP Bead Blast Cabinet w/ Mdl. BP2 Reclaimer, 36" Long x 24" Deep x 22" Tall



Blast-It-All Bead Blast Cabinet w/ Reclaimer, 36" Long x 24" Deep x 26" Tall

Trinco Mdl. 40X40SL Bead Blast Cabinet 40" Long x 40" Deep x 32" Tall, Needs Work



(2) Yamaha Battery Powered Golf Carts, 2 Passenger w/31" Bed and Chargers

Snap On Armature Growler

(4) Calcana Propane Gas Radiant Tube Heaters 40ft

Starrett 4" - 40" Inside Mic Set

MAC Tools Mdl. TG56 Telescoping Gauge Set

Mitutoyo Micrometer Gauge Set 1" - 24" 12" Height Gauge

DeVlieg Mdl. 3B-48 Spiramatic Jigmil, S/N 4-229, 30"x48" 6 Slot Main Table w/26"x26" 5 Slot Adapter Table, 3" Diameter Spindle Bar w/40 Taper Adapter, 16" Bar Feed, 36" Vertical Travel, 48" Horizontal Travel, Spindle Speed 25 RPM - 1200 RPM (High Speed 33 RPM - 1600 RPM), Acurite III XYZ Digital Readout, 7.5HP Spindle Drive Motor, w/Tooling

Miller SRM 400 Direct Current Arc Welder Power Supply



Wards Powr-Kraft 295 Arc Welder

Hi-Jacker Mdl. HJ-15M Hand Cranking Platform

Lift, 300lb Capacity, 15ft Lift

3 HP Vertical Air Compressor

(2) Air Compressor Holding Tanks

Spiffire Precision Lapping Machine Mdl. SPF888-24, 24" Diameter Table

Brown & Sharpe Intermik Gauge

(4) Various Intermik Gauges

(3) Micrometers

(9) Dial Indicators

(4) Somfytec Gram & Ounce Scales

(6) Torque Wrenches 3/8" - 1"

Pace MBT-210 Soldering Station

Misc Boring Bars and Cutting Wheels

3M Mdl. 716 Wrist Strap Tester

Fire Proof Cabinets

Dewalt Radial Arm Saw

# Manuals



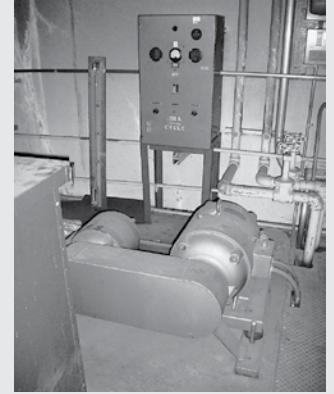
2500+ Manuals to Include: Vickers Hyd. Pumps, Sperry Avionics, Honeywell Avionics Wiring & Repair, Weather Scout Radar Ind., Sunstrand Generator, Sunstrand Flap Drive, Dehavilland, Sylvania, Taffet Avionics, Tach Generators, Telephonics Avionics, Textron Drain Valves, Cooling Fans, Axial Flow Fans, United Controls Actuators, Various Power Supplies, Simmonds, Smiths, Lear Siegler and Lucas Starter Generators, Lockheed Component Overhaul, Liebherr Component Overhaul, Leach Electrical, Menasco Landing Gear Repair, Parker Valves & Pumps, JT15D & PT6 Parts Manuals, RCA Avionics Repair, Fokker F-28 Parts, C-130 Component Wiring and Repair, Collins and King Avionics Repair, Dunlop, Douglas, Dowty, Garrett APU Component Repair, Janitrol, Walter Kidde, KC-10, Allison 501-D, Westinghouse, Woodward, Wulfsberg, Whitaker, British Aerospace, Dukane, Gables, Hughes.

Tape Library To Include: Boeing 777, 767, 757, 747, 737, 737 Classic, 727, 707, MD-80, DC-10, DC-9, DC-8, L-1011, Fokker F-28, P&W JT8D-200, JT-3D. Including Airframe Maintenance, Component Maintenance, Overhaul Manuals, Parts Catalogs, Tooling, Electrical Manuals, Service Bulletins

Eyecrom Printmaster 10000 Tape Reader / Printer

# Test Equipment

Airesearch Mdl. UTTS1-4 Turbine Test Stand Trailer  
US Electrical Motors 30HP Varidrive, Dual Pad, 3000 - 9000 RPM



UsAir APU Speed Switch Test Unit P/N R01069

400 Hz Buss Bar System Contains (3) 200ft Runs

King Mdl. 804 10,000lb Dead Weight Tester Pump

Mansfield Dead Weight Test Pumps

Amthor Type 472 10,000 PSI Dead Weight Tester Pump

Spectroline DSE-100 Digital Radio Meter w/Light Sensor and UV Sensor

(2) 1200Hz Frequency Converter Motors, American Electronics Control Panel Mdl. 137EA-160S, Input Volts 115 - 1ph - 60 Cycle, Output DC Volts 24 - 8 Amp - 1200 Cycle, w/5 HP Motor

Essex Electro Mdl. A510A Load Bank Tester, Needs Work

(2) Ellis & Watts Co. Mdl. PS10P10-24 Copper Lined Modular Test Room / Building. 1 Unit 10' x 20', 1 Unit 10' x 10'

# Avionics Test Equipment

HP Avionics Test Rack, Includes: HP 8566B Spectrum Analyzer, HP 8902A Measuring Receiver, HP 11793A Microwave Converter, HP 8903B Audio Analyzer, HP 5351B Microwave Frequency Counter w/HP 11792A Sensor Module, Several Power Sensors and Ballantine Thermal Converters.



(2) Barfield 2312G Turbine Temp Test Sets

GRI Mdl. ETS-15 Electronic Thermocouple Simulator

Wavetek Mdl. 143 20Mhz Function Generator

HP 3325A Synthesizer / Function Generator

Protek B-801 Digital Sweep Function Generator

HP 8904A Multi Function Synthesizer

HP 8112A 50Mhz Pulse Generator

Ballantine Mdl. 6130A Time Mark Generator

Fluke 6080A/AN 500Khz - 1024Mhz RF Signal Generator

General Radio Mdl 1340 Pulse Generator

HP 432A Power Meter

Safe Flight Instruments P/N 1902 Servo Amplifier Test Set

Sperry P/N T-321159 Yaw Computer Test Set

HP 8350A Sweep Oscillator  
HP 4204A 10Hz - 1Mhz Oscillator

General Radio Mdl. 1316 Oscillator  
HP 3561A Dynamic Signal Analyzer  
Marconi Mdl. 6500 Automatic Amplitude Analyzer

Collins 973M-2A Radio Test Set  
Fluke 8012A Digital Multimeter  
Fluke 893A Voltmeter

HP 8405A Vector Voltmeter  
(6) Triplett Mdl. 630-NA Multimeters

(2) Tech Type 2 Power Measuring Systems

Tektronix Mdl. 67-502 Amplitude Calibrator and Comparator

Tektronix Mdl. 67-596 Chopped Voltage Reference Fixture

Standard Type AC-1 Timer  
IMO Type 2500-0101 Digital Barometer

ETC Psychro-Dyme Relative Humidity Psychrometer

Davidson Mdl. D-309 Interferometer  
Fluke 80E Voltage Divider

HP 11692D Dual Directional Couplers 2-18Ghz

(2) Mensor Mdl. 11910 Portable Digital Pressure Gauges

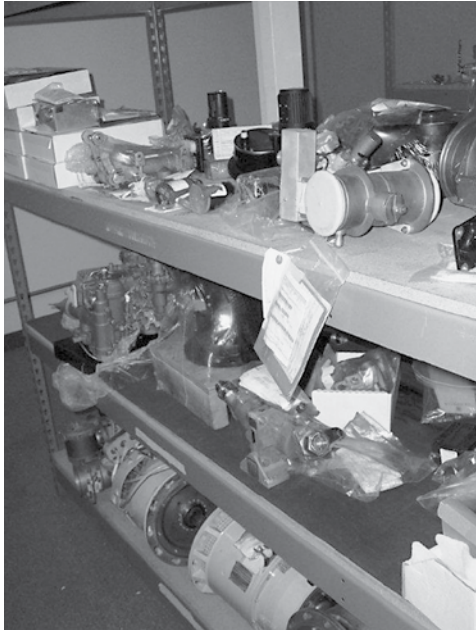
Several Flow Meters  
Several Digital & Analog Pressure Gauges

To Include: Heise, Mensor, and US Gauge

Sencore Circuit Tester

**A 5% Buyers Premium will be charged to all purchases at this auction.**

## Commercial Rotables



- GE CFM56-3 Power Management Unit P/N 7147M10G03 Rep.
- Slat Actuator P/N 65-44651-14 O/H
- Aileron/ Elevator PCU P/N 65-44761-14 Rep.
- 737 Flap Position Transmitter P/N 18-1738-52 Rep.
- (2) Thrust Reverser Valve P/N 0711346-003 O/H & A/R
- DC-9 Hyd. MLG Dampener P/N SR09320057 O/H
- FCU P/N 769606-8 O/H
- Actuator P/N 235600-105 Rep.
- Anti Ice Valve P/N 397802-8 O/H
- Anti Ice Valve P/N 32-3110-005 Rep.
- Deice Valve P/N 1532-12A A/R
- Shutoff Valve P/N 204-13715-10 A/R
- Shutoff Valve P/N 369196-9 O/H
- (3) Hyd. Accumulators P/N 3059103-7 O/H
- Level Switch Reservoir P/N 974641 Rep.
- Hyd. Brake Valve P/N 41300-25 O/H
- Vickers Hyd. Pump P/N A0643-089C O/H
- Hyd. Pump P/N 350880-6 Rep.
- Vickers Hyd. Pump P/N A566411-L-5666 A/R
- Vickers Hyd. Pump Mdl. PV3-160-4 A/R
- Vickers Hyd. Pump Mdl. MPH1-037-UK2 A/R
- TRW Engine Driven Fuel Pump P/N 704300-4 A/R
- Flow Control Valve P/N AIR91762-1 Insp.
- Flow Pack P/N 106616-1-1 A/R
- Allied Signal Outflow Valve P/N 103154-1-1 A/R
- (10) Hydraulic Generator Units P/N 11370-5 - Various Conditions
- (2) Air Shutoff Valves P/N 41C220-53 Rep.
- Airesearch Flow Control Valve P/N 396064-1-1 A/R
- Directional Valve P/N 80-025-05 Rep.
- Honeywell EPR Transmitter P/N LG14C14 O/H
- (2) Fuel Flow Transmitters P/N 8TJ124GGR1 O/H
- AC Power Supply P/N 914F567-4 O/H
- Axial Flow Fan P/N FV7-1 O/H
- Axial Flow Fan P/N M3251B-6A Rep.
- (5) New FHA Blower Assys P/Ns 1152-2-1 & 1464-02
- (2) Westinghouse AC Generators P/N 976J498-1, 1 Tested, 1 A/R
- (3) GE Generator Cores P/Ns 31425 & 2CM353C1H
- Bendix Generator P/N 28B141-17-0 A/R
- Honeywell AC Generator P/N 28B262-35C A/R
- Sperry Throttle Rotary Actuator P/N 2587781-901
- Simmonds Ignition Exciter P/N 83311
- Signal Conditioner P/N 124551-8 Rep.
- Static Plate P/N 5920413-505 Rep.
- Cooling Turbine P/N 204820-2 A/R
- Oil Cooler P/N 12536-11698 A/R
- Oil Cooler P/N 86260-2 A/R
- (6) Aircraft Refrigerator Units
- (6) Descent Devices P/N 379103C-15 O/H
- 3 Tach Generators
- Several Airesearch, Garrett, and Misc. Shutoff & Control Valves
- Several Armatures & Housings

## Garrett APU Inventory

- (2) GTCP85-90 Fuel Control Units P/N 124750-3-1, 371688-101 O/H
- GTCP36-50 Fuel Control Unit P/N 3882544-2-1 A/R
- 1st Stage Impeller P/N 379547 Svc.
- (3) 2nd Stage Impellers P/N 99193-698193-6 No Paperwork
- (25) GTCP85 & 95 Turbine Wheel and Shaft Assys. Repairable
- (3) APU 2nd Stage Housings P/N 379515 O/H & Rep
- (3) Fan Inlet Housings P/N 379581 Insp.
- (3) GTCP85-129 Gear Case Housings P/N 977831-5, 3603708-5 Rep. & Svc.
- (4) Torus Assys. P/Ns 968567-3, 968959-4, & 379794-60 O/H & Insp.
- 2nd Stage Diffuser Housing P/N 373822-8 Rep.
- GTCP85-98D Turbine Bearing Housing Assy. P/N 977894-1 Insp.
- Oil Pump Assy. 379580-300 Svc.
- (3) Combustion Liners P/Ns 698168-7, 369339-1 O/H



- GTCP85 Combustion Liner P/N 899155-3 Insp.
- APU Burner Can P/N 3830040-6 O/H
- (4) Burner Can Caps P/N 695709 Rep.
- GTCP85-129 Exhaust Pipe Assy. P/N 966580-3 Insp.
- GTCP85-129F Oil Tank P/N 976036-3 Insp.
- APU Oil Tank P/N 3606810-1 Rep.
- Lead Control Valve P/N 109812-9 Rep.
- Westinghouse GTCP85 AC Generator P/N 976J252-6 Rep.
- (2) APU Cooling Fans P/N 695227-12, & -23
- Airesearch Butterfly Valve P/N 109486 Rep.
- Airesearch Centrifugal Switch P/N 360480-5 Insp.
- Several Repaired and Overhauled GTCP85 Housings, Flange Assy, and Seals
- Good Selection of As Removed Airesearch APU Housings, Gears, Scrolls, Shields, Hardware, Impellers, Controllers, and Lines

## Instruments & Avionics

- O/H Sperry Smart Systems Monitor P/N 2589433
- O/H Sperry Amplifier Indicator P/N AM1784685-134
- O/H Bendix Compass Amplifier P/N 15450
- O/H Collins Compass Amplifier
- (8) O/H Sperry Compass Mdl. C6D & C6H
- Oil Temp Indicator P/N 124838 Rep.
- Radio Altimeter P/N 2070484-503 Rep.
- New SPS-90D Power Supply
- New Bendix AT-911A Marker Beacon Antennas
- Collins VHF Transceiver P/N 622-1181-001 Rep.
- AC Current Sensor P/N X00043-409 Rep.
- (7) Sunstrand MKII GPWS P/N 965-0476-088
- Honeywell Air Data Computer P/N HG280D5 A/R
- Dynamic Controls P/N 11170-2 NAV/Instrument Computer Monitor Assy
- Sunstrand GPWC Computer
- Airesearch Cabin Air Pressure Controller P/N 2117718-5 A/R
- Collins RT-1794C/ARC Receiver Transmitter
- Collins VOR/ILS Receiver 522-4280-105
- Stall Warning Computer P/N 69-37339-14 Rep.
- Smiths Computer P/N SIC5054-5
- Sperry Z-5 Flight Director Computer

- Sunstrand MKII GPWS Computer
- Crane 42-265 Anti-Skid Control Unit
- Crane MKII Control Box
- Messier Brake System Control Unit P/N C20101304-202 A/R
- Logic Mdl. CTA12-3 Annunciator Panel
- Sperry Servo Amplifiers
- EGT Indicator P/N 152BCL4P Rep.
- Flap Position Transmitter P/N ST-12AF Rep.
- (2) Fokker F-28 Fuel Flow Indicators
- (2) Oil Temp Ind. P/N 521313 Rep.
- Sfena Horizon Gyro Type 705-7V4
- Trim Tab Indicator P/N S104-3-150
- Hartman Stall Recognition Tone Generator P/N 593-1
- Misc Switching Panels and Audio Control Panels
- Flight Mode Annunciator Panel P/N D434-06-001 Rep.
- Take Off Warning Horn P/N 430-M1 Rep.
- Window Heat Control P/N 231-2 Rep.
- Miniature Rate Gyro P/N 2589129-02 Insp.
- (3) Litef Gyro Sensor Block Assy P/N 118347
- Asetek Altitude Alert
- (2) Compass Racks
- (25+) Altimeter and Misc Indicators

## Office Furniture, Shelving & Benches



- Double Door Combination Lock Safe 66" Tall x 40" Wide x 26" Deep
- (2) Cisco & D-Link 16 & 24 Port Ethernet Switches
- Mitel Telephone System
- Good Selection of HON Office Cubicles
- 10ft Honey Oak Conference Table w/8 Chairs
- 7ft Oak Conference Table w/8 Chairs
- (4) Double and Single Pedestal Office Desks
- Several 4 Drawer File Cabinets
- 2 Door Metal Cabinets
- Metal Lockers
- Good Selection of Metal Shelving, Shop Benches, and Tables
- 2 Door Fire Proof Cabinets
- Several Hundred Feet of Warehouse Cage

***A 5% Buyers Premium will be charged to all purchases at this auction.***

# STARMAN BROS. AUCTIONS INC.

1240 Royal Drive ■ Papillion, NE 68046-2082  
(402) 592-1933

Return Service Requested

PRSRRT FIRST CLASS

U.S. POSTAGE

PAID

MAIL U.S.A.

First Class

**AUCTIONEERS NOTE: THE OWNERS OF ALAMEDA AEROSPACE ARE COMBINING SOME OF THEIR OPERATIONS AND DOWNSIZING OTHERS. BY DOING SO THEY HAVE GENERATED SURPLUS EQUIPMENT & INVENTORY AND HAVE CONTRACTED WITH STARMAN BROS. AUCTIONS TO LIQUIDATE THIS SURPLUS AT PUBLIC AUCTION. THIS AUCTION INCLUDES SOME WELL MAINTAINED HYDRAULIC TEST BENCHES ALONG WITH A GOOD SELECTION OF APU'S, ROTABLES AND TEST EQUIPMENT.**

**EVERYTHING SELLS "AS IS, WHERE IS" WITH NO WARRANTIES IMPLIED OR EXPRESSED. NEITHER THE AUCTIONEER NOR OWNERS SHALL BE LIABLE FOR ANY INCORRECT DESCRIPTION, FAULT, OR DEFECT. EVERYTHING POSITIVELY SELLS TO THE HIGHEST BIDDER. PAYMENT MUST BE MADE IN FULL DAY OF SALE. NO PROPERTY REMOVED UNTIL SETTLED FOR. AUCTIONEER IS NOT RESPONSIBLE FOR ACCIDENTS OR STOLEN PROPERTY. ALL COUNTS ARE APPROXIMATE.**

#### PROXY BIDS

If you re unable to attend this auction, we will bid on your behalf. For more info, visit our website at [www.starmanauctions.com](http://www.starmanauctions.com), click on Upcoming Auctions and scroll down to the Proxy Bid section. Complete the form and fax to (402) 592-2327 or call Steve at (402) 681-6456.

**TERMS: CASH, CERTIFIED FUNDS, OR COMPANY CHECK ONLY IF ACCOMPANIED BY BANK LETTER OF GUARANTEE!! NO EXCEPTIONS! WIRE TRANSFERS WILL BE ACCEPTED WITH A 20% NON-REFUNDABLE DEPOSIT THE DAY OF THE SALE. WE ALSO ACCEPT MASTERCARD AND VISA WITH A 3% BUYERS PREMIUM APPLICABLE. A 5% BUYERS PREMIUM WILL BE CHARGED TO ALL PURCHASES AT THIS AUCTION, THIS IS IN ADDITION TO THE 3% FOR USING A CREDIT CARD.**

#### LOADING & REMOVAL

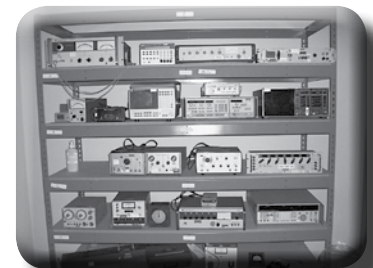
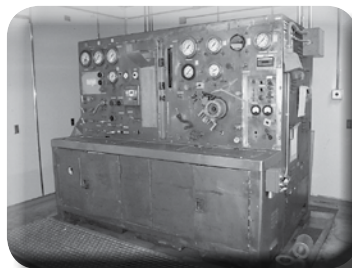
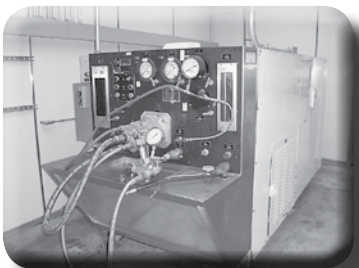
Once an item is sold the winning bidder is responsible for its removal. Any cost, responsibility and risk of removal of purchases remain with the buyer. Removal may begin after payment in full and must be completed by the posted deadlines. NO EXCEPTIONS OR EXTENSIONS! There may be various trucking companies on site to arrange for transportation. However, it will be the buyer's responsibility to arrange their own trucking.

## AVIATION AUCTION

Assets surplus to the ongoing needs of **ALAMEDA AEROSPACE**

**Wednesday, February 9<sup>th</sup>, 2011**  
Starting at 9:30 A.M.

**120 W. ORISKANY AVE., ALAMEDA, CA.**  
Located on the Former Naval Air Station



STARMAN BROS. AUCTIONS INC.

1240 Royal Drive ■ Papillion, NE 68046-2082  
(402) 592-1933

STARMAN BROS. AIRLINE SERVICES, INC.