



1240 Royal Drive ■ Papillion, NE 68046-2082
(402) 592-1933

Return Service Requested

PRSRRT FIRST CLASS

U.S. POSTAGE

PAID

MAIL U.S.A.

First Class



SATURDAY, SEPTEMBER 10, 2005
Starting at 9:00 A.M.

Auctioneer's Note: Don Fiske owner of Flight Center has passed away, his widow has contracted with Starman Bros. Auctions to liquidate at Public Auction all of the assets of the company. This auction contains a very large inventory of new P & W Radial Engine Parts as well as some good Accy. Inventories, Shop Equipment & Tools.

Everything sells "AS IS, WHERE IS" with no warranties implied or expressed. Neither the auctioneer nor owners shall be liable for any incorrect description, fault, or defect. Everything positively sells to the highest bidder. Payment must be made in full day of sale. No property removed until settled for. Auctioneer not responsible for accidents or stolen property. All counts are approximate.

TERMS: Cash, Certified Funds, or Company Check ONLY if accompanied by Bank Letter of Guarantee!! NO EXCEPTIONS! Wire Transfers will be accepted with a 20% non-refundable deposit day of sale. We also accept MasterCard and Visa. A 3% Buyers Premium will apply to this auction. If payment is Cash, Check, Certified Funds or Wire Transfer the 3% Buyers Premium will be waived.



FLIGHT CENTER

72 East Palm Ave. - Burbank, California

Directions: From Burbank Airport take I-5 South Exit Burbank Blvd., Turn Left Go To San Fernando Rd., Turn Right, Go To First St., Turn Right, Go To Palm Ave., Turn Right

ABSOLUTE AUCTION

Sale Site Phone: 818-846-4800

Airline Connections: Major Airlines into Burbank Airport or LAX Airport. Rental Cars available at both locations.

HOTELS

Holiday Inn Burbank-Media Ctr.
(818) 841-4770
150 E. Angeleno Ave.
Burbank, CA

Hilton
(818) 843-6000
2500 N. Hollywood Way
Burbank, CA

Ramada Inn
(818) 843-5955
2900 N. San Fernando Blvd.
Burbank, CA

Courtyard-La Burbank Airport
(818) 843-5500
2100 W. Empire Ave.
Burbank, CA

Quality Inn
(818) 848-1680
2255 N. Buena Vista St.
Burbank, CA



9000 NW 15TH STREET ■ MIAMI FL 33172
(305) 477-6865

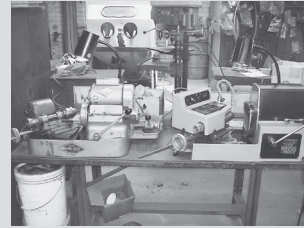


1240 Royal Drive ■ Papillion NE 68046 2082
(402) 592 1933

FORKLIFT & SHOP EQUIPMENT



Clark 2500 lb. Forklift Gas, Hard Rubber Dual Stage 12' Mast

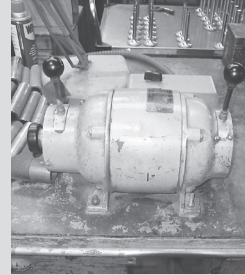


Kwik Way Mdl. SVSD Series II Wet Valve Facing Machine w/ Rocker Arm Attachment (Very Little Use)

Kwik Way Wet Valve Facing Machine w/Rocker Arm Attachment



ICM Mdl. 4800 Super Blast w/ Filter System



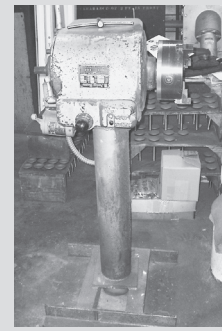
(2 ea) Crozier Speed Lathes Bench Mounted w/Chucks High & Low Speed 1800/3600 RPM



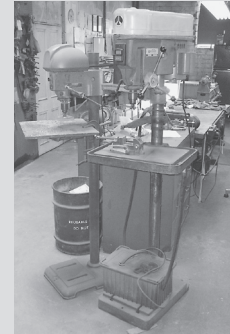
Baron Blakeslee Mdl. BH-425 Hot Solvent Vapor Degreaser Atlas 6" Belt & Disc Sander



Craftsman Roll-Round Tool Box w/8 Drawer Bottom Box & 12 Drawer Top Box



Peerless Chucker 3 HP, 4-Speed, 600, 1200, 1800 & 3600 RPM w/Reverse



(2 ea) Delta/Rockwell Drill Press Floor Variable Speed Rimac Valve Spring Tester



Dake Mdl. 50 HW 5 Ton H Frame Hyd. Press Small Hyd. H Frame Press Essick Mdl. F-390 Horizontal Aircompressor Dual Stage

Polishing Stand Variable Speed w/34" Between Centers; Piston Ring Gap Cutter; Oxygen Acetylene Torch Set Cart & Bottles; Metal Banding Machine; Fairbanks 1000 lb Platform Scale; 100 lb Parcel Scale Toledo Mdl 3410, Hardware Scale 40 lb NPS Mdl 52, Moist Box Type Dispenser Hot Bag Sealer; Misc Bench Vices; Zyglo Black Light Kit; Marking Methods Electro-Chemical Marking Kit; Arbor Press

HAND & SPECIAL TOOLS

Cylinder Bore Gauges
Several Micrometer Various Sizes Brown & Sharp, Mitutoyo, etc.
Depth Micrometers
Telescoping Gauges
Vener Calipers
Gauge Block Sets
Height Gauges
Socket Sets To Incl. Standard Deep Well Snap-On, Craftsman, etc.
Breaker Bars, Ratchets, Extensions, Various Sizes Speed Handles
Box End, Open End & Combination Wrench Sets, Snap-On, Craftsman & Misc.
Channel Locks, Side Cutters, Needle Nose & Misc. Pliers
Vise Grips, Pipe Wrenches, Crescent Wrenches, Screw Drivers, Files, Punchers, Chisels, Brass Drifts
Tap & Dies

Electric Engravers, Several Numbers & Letter Stamps, Piston Ring Deburring Fixtures
Hack Saws, Hammers, Ball Peen, Mallets, Heavy, etc.
Slide Hammers
Milwaukee Electric Drills
Huskey 1/2" Air Impact Drivers
Dremmel Tools
Impact Socket Sets
Pneumatic Paint & Touch Up Guns
Drill Indexes
K-line Valve Inspection Fixture
Large Sel. of Grinding Pads, Discs, Drums, Wheels
Emery Cloth
Rubber Gloves
C-Clamps
Spray Paints, Lubricants, Cleaners, Oil, Chemicals, etc.
Box Staplers

P&W & CURTIS WRIGHT TOOLS

Pratt & Whitney & Curtis Wright Tools To Incl. Drivers, Pullers, Intake Tube Wrenches, Turning Bars, Holding Fixtures, Drivers, Specialty Tools, Lifting Eyes, Slings, Sweeney Tools, Cylinder Base Wrenches, Valve Spring Tools
Very Large Sel. of Tools For Most Models Of P & W Engines & Various Models Of Curtis Wright

NEW LAMAR STARTER & VOLTAGE REGULATOR INVENTORY

Approx 1000 Armatures, (Both 12 & 24 Volt) D.E. Housings, Bushing Housings, Oil Seals, Cases, End Bells, Bendix Starter Drives Armature Shafts, Out Put Shafts, Resistors, Diodes, Connectors, Terminals, Pins, Hardware, etc. Note: This is a Good New Lamar Inventory. For Part # List Visit our Web Site www.starmanauctions.com, click on upcoming auctions & Go to Flight Center

J-47 INVENTORY

Nozzle Diaphragms, Gear Cases w/Invet Vanes, Burner Cans

PRATT & WHITNEY ENGINE INV.



This is a Very Large Inv. of New P&W Inv. For the Following Models of Engines, R-0985, R-1340, R-2000, R-1830 & R-2800 to Include: Intake & Exhaust Valves, Pistons, Piston Pins, Piston Rings, Rocker Arms, Rocker Arm Bushings & Bearings, Master Rods, Link Rods, Cams, Crankshafts, Tappets, Liners, Very large Selection of Internal Gears, Couplings, All Types of Bearings, Covers, Plates, Intake Tubes, Cylinder Head Baffles, Deflectors, Seals, Tubes, Gear Assys., Counterweight Bushings, Adapter Assys., Liners, Valve Springs & Seats, Shafts, Rollers, Valve Guides, Followers Nose, Main & Intermediate Cases, Blower Cases, Blower Assys., Pump Assys., Diffusers, Inserts, Bushings, Oil Pumps, Sumps, Prop Shafts, Nozzles, Nozzle Brackets, Bodies Plates, Plugs, Screen Assys, Slings Accy. Drive Gears, Link Rod Pins Fittings, Cylinder Assys., Dampers, Inserts, Impeller Shafts, Impellers & Bushings, Studs, Hardware, O-Rings, Gaskets, Carriers, Collars, Follower Assys., Counter Balances.

NOTE: This is a very large inventory of which the majority is new. For a complete part # listing with description visit our web site www.starmanauctions.com, click on upcoming auctions & go to Flight Center.



BENDIX FUEL INJECTION & MARVEL SCHBLER INV.

This is all new inventory for the Bendix RSA-5 & RSA-10 Fuel Injection Servos and the Marvel Schbler MA-3 & 4SPA, MA-4-5 & HA-6 Carburetors Inv. Includes: Body Assy., Throttle Levers, Throttle Shafts, Mixture Levers, Mixture Control Levers, Float Gaskets, Diaphragms, Venturis, Jets, Stems, Nozzle Bodies, Seats, Nozzle Assys., Spacers, Metering Jets, Metering Valves, Float Levers, Bushings, Hardware, O-Rings, AMC Needle Assy., Pump Plungers, Springs, & Holders, Pins, Bellows, Nozzle Seats, Bleed Air Jets, Flow Divider Valves, Etc.

NOTE: This is a good sized all new inventory for a list of part numbers, counts & descriptions of the complete Inv. go to our web site, click upcoming auctions and go to Flight Center.

MANUALS

Large Selection of Manuals Including Pratt & Whitney R-985, R-1340, R-2000, R-2800, R-1830 Overhaul & Parts Manuals, PT-6A Parts & Maintenance, J-47 & J-79 Parts & Maintenance, Several Curtis Wright Overhaul & Parts, Bendix & Misc., Other Accessory Manuals, DC-6 Parts Manuals, Military Manuals Include, Navy WV-2, A.F. RC-121D, Navy Hupp 1 & 2, HSS Heli, Navy T-34B, P2V-7, Parts & Overhaul, C-124, C-47, C-118A, T-28A Parts & Overhaul Manuals. U.S. Air Force Stock List, Supply Class Code & Numbers Manuals. U.S. Navy Master Stock Number Cross Reference Manuals. U.S. Air Force Master Cross Reference Listing Index. NAS Standards, U.S. Air Force Sikorsky Manuals, U.S. Air Force Pub. Douglas, Beech, Cessna, Lockheed, Kaman & Grumman Parts Lists.



DP FUEL CONTROLLER INVENTORY

This is a good sized new Inventory of Piece Parts for the DP Fuel Controller that was manufactured by (Bendix) Honeywell. These Controllers fit the Honeywell LTS-101 & some TPE-331 Engines. Includes: Pins, Mixture Levers, Springs, Sleeves, Levers, Shafts, Bearings, Plungers, Quadrants, Bushing Assys., Bellows, Drive Bodies, Clevis, Main Bodies, Enrich Valves, Plugs, Couplings, Shaft Assys., Restrictors, Shafts, Auctuator Valves, Valves, Splines Metering Valves, Filters, Bearings Cams, Levers, Kits, Governor Inv., Cap & Screen Assy., Etc. For a Complete List With Part #'s Visit Our Web Site, www.starmanauctions.com and Click On Upcoming Auctions & Go To Flight Center.

STARMAN BROS. AUCTIONS INC.

1240 Royal Drive ■ Papillion, NE 68046-2082
(402) 592-1933

STARMAN BROS. AIRLINE SERVICES, INC.

9000 NW 15TH STREET ■ MIAMI, FL 33172
(305) 477-6865