

**2
DAY**

AVIATION

AUCTION

**2
LOCATIONS**

**FRIDAY & SATURDAY,
OCTOBER 18 & 19, 2002**

**Starting at
9:00 A.M.
Both Days**



**SLAFCO INC. & AIRES
AIRE LTD.**
Moses Lake & Ephrata,
Washington



**FRIDAY, OCT. 18 - 6998 22nd Ave.
NE, Building 2203, McChord AFB/
OPS Hangar, Grant County Int'l.
Airport, Moses Lake, WA**



**SATURDAY, OCT. 19 - 1085 A St. SE,
Ephrata, WA**

**ABSOLUTE AUCTION
NO MINIMUMS -
NO RESERVES**

Directions: From Moses Lake take Hwy. 17 west to Ephrata. Approx. 1/2 mile after passing Wal-Mart and before the overpass turn right on A St., approx. three blocks on left.

SALE SITE PHONE

**Call Starman Bros. Auctions—
402-592-1933 or 402-681-6456**

AIRLINE CONNECTIONS

Moses Lake has limited airline service on Skywest Airlines, a Delta feeder. Most major airlines service Spokane, WA which is approx. 90 miles away. Rental cars available in Spokane. Horizon Air also flies into Wenatchee, WA from Seattle, approx. a 60 mile drive. Private aircraft can land at Grant County Int'l. Airport, Moses Lake. There are two FBO's, Air America Fuel & Service Inc., 509-762-2222 and Columbia Pacific Aviation, Inc., 509-762-1016. Rental cars available.

HOTELS

- AmeriHost Inn**
1157 N. Stratford
Moses Lake, WA
509-764-7500
- Shilo Inns**
Junction of I-90 & Hwy. 17
Moses Lake, WA
509-765-9317
- Best Western Hallmark Resort**
3000 W. Marina Dr.
Moses Lake, WA
509-765-9211
- The Inn at Moses Lake**
1741 E. Kittleson
Moses Lake, WA
509-766-7000
- Holiday Inn Express**
1745 E. Kittleson
Moses Lake, WA
509-766-2000
- Ephrata Hotels Include**
Best Western Ramada Inn
1818 Basin St. SW
Ephrata, WA
509-754-7111
- Travelodge Ephrata**
509-754-4651

PRSR FIRST CLASS
U.S. POSTAGE
PAID
PERMIT NO. 7
WATERLOO, NE

FIRST CLASS

**STARMAN BROS.
AUCTIONS INC.**
1240 Royal Drive • Papillion, NE 68046-2082
(402) 592-1933

www.starmanauctions.com

Return Service Requested

**STARMAN BROS.
AUCTIONS INC.**

1240 Royal Drive • Papillion, NE 68046-2082
(402) 592-1933

**STARMAN BROS.
AIRLINE SERVICES, INC.**

9940 EAST CALUSA CLUB DRIVE • MIAMI, FL 33186
(305) 382-6199

Washington Lic.
#202-00-0002135

www.starmanauctions.com

SELLS FRIDAY, OCT. 18th AT GRANT COUNTY INT'L AIRPORT, MOSES LAKE

★★★ FLYING AIRCRAFT ★★★



Consolidated Vultee Super PBY N-9505C, S/N 34027
 Airframe Time Since New: 4,668 Hrs.
 Airframe Time Since Major Overhaul: 2,621 Hrs.
 Engines: Curtis Wright R-2600
 L/H Engine: R-2600-29, 465 Hrs. S.M.O.H.
 R/H Engine: R-2600-13, 966 Hrs. S.M.O.H.
 Propellers: Hamilton Standard
 L/H Prop: 699 Hrs. S.M.O.H.
 R/H Prop: 822 Hrs. S.M.O.H.
 Avionics:
 Dual Collins 51R-7 Navs
 Dual Collins 618 M-1 Coms
 King KX-78 Transponder
 Narco 195 DME
 King Glide Slope
 Collins Marker Beacon
 Wulfsberg RT-9600 VHF-FM Transceiver w/High and Low Splitter Box
 Large L/H Cargo Door, All Metal Center Section and Trailing Edges, Chemoniles 70 Gal. Foam Distribution System, Slafco Scoup and Drop System, Fire Fighting Ready, Has Both Blisters and Original Anchor. This aircraft was used in the movie "Always".



Consolidated Vultee Super PBY N-31235, S/N 48426
 Airframe Time Since New: 11,347 Hrs.
 Airframe Time Since Major Overhaul: 2,836 Hrs.
 Engines: Curtis Wright R-2600-35
 L/H Engine: 2,400 T.T. and 388 Hrs. S.M.O.H.
 R/H Engine: 3,143 T.T. and 1,178 Hrs. S.M.O.H.
 Propellers: Hamilton Standard
 L/H Prop: 787 T.T. and 328 S.O.H.
 R/H Prop: 326 S.M.O.H.
 Avionics:
 Dual Collins 51R-7 Navs
 Dual Collins 618 M-1 Coms
 King KT-76T50 Transponder
 King KTR-9000 VHF Com Trans.
 Narco 195 DME
 Wulfsberg RT-9600 VHF-FM Transceiver w/High and Low Splitter
 Has Both Blisters, Large L/H Entrance Door, Electric Air Stair Door, Chemoniles 70 Gal. Foam Distribution System, Slafco Scoup and Drop System, Fire Fighting Ready, Both Wheel Wells Have Been Rebuilt



Consolidated Vultee PBY C-GFFC, S/N 013
 Airframe Time Since New: 7,360 Hrs.
 Engines: Pratt & Whitney 1830-92
 L/H Engine: 345 Hrs. S.M.O.H.
 R/H Engine: 259 Hrs. S.M.O.H.
 Propellers: Hamilton Standard
 L/H Prop: 1,648 S.O.H.
 R/H Prop: 745 S.O.H.
 Avionics:
 King KX-175B Nav Com
 King KX-170B Nav Com
 Narco 141 ADF
 3 Light Marker Beacon
 L/H Cargo Door, L/H Large Entrance, Tail Gunner Door, Clipper Bow



Douglas B-23 (UC-67), N-777 LW, S/N 3963
 Airframe Time Since New: 9,670 Hrs.
 Engines: Curtis Wright R-2600-29
 L/H Engine: 206 Hrs. S.M.O.H.
 R/H Engine: 466 Hrs. S.M.O.H.
 Propellers: Hamilton Standard
 Aircraft was formerly owned by Westinghouse. Has original executive interior with six chairs and three place couch, lav., and cabinets. Retractable Gear; Cruises at 280 Knots; Part 91 Aircraft

NOTE: The flyable aircraft will sell at approx. 12:00 on Friday the 18th.

★★★ TRUCK and TUGS ★★★



Clarktor Mdl. Mill-40 Tug, 4,000 Lb. D.B.P., Flat Head 6 Cyl., 4 Speed
 United Mdl. GC-250A Tug, 2,500 Lb. D.B.P., Ford 6 Cyl., Auto Trans., w/ Cab
 1970 GMC 6500 Box Truck, V-6 Engine, 5 Speed Trans., w/20' O.H.
 Roth Aluminum Box w/Roll Up Rear Door, Electric Lift Gate

FLYING AIRCRAFT TERMS: Must Be Cash, or Certified Funds. A company check will be accepted ONLY with an IRREVOCABLE Letter of Credit From Your Bank. If a Wire Transfer or Bank Draft is used we need a 20% NONREFUNDABLE DEPOSIT Day of Sale via one of the above mentioned forms.

★★★ B-25 INVENTORY ★★★

(4 Ea.) New L/H Main Landing Gear Assys., B-25 Brake Assys., Shimmy Dampeners, R/H Gear Door, Gear Door Strut Rod Ends, Main Gear Door Struts and Levers, Load Mount Assys., Mounting Suspension Rubbers, Engine Mount Bolts, B-25 Windshields, Top Hatch Glass, B-25 Slider Windows, Top and Front Hatches, New Nose Gear Assy., Rudder Cranks, Landing Light Covers, Wing Parts, Ribs, Aileron Hinges, Trim Tab Push Pull Rods, Bomb Door Selector Valves, Fuselage Parts, Main Gear Brake Control Valves, Fuel Caps, Engine Control Cables, Brackets, Windshield Wiper Motors, Elevator Bungee Push Rods, Junction Boxes, Cowl Flap Brackets, Mag. and Gen. Blast Tubes, Nose Struts, Cowl Flap Brackets, Cowling Mounting Rings, Deice Slip Rings, Cowl Support Brackets, Air Scoupes, Cowl Flap Inner Links, Desert Screens, (8 Ea.) Holly Style Air Scoupes, Bendix Air Scoupes, Sheet Metal Parts, Prop Gov., Cables, B-25 Cowl Flaps, B-25 Accy. Cowling, B-25 Flight Engineer Seat, B-25 Nose Wheel and Tire, Power Section Cowling, (10 Ea.) Speed Rings, Dish Pans, Cowl Flap Mounting Rings, Engine Mounts, B-25 Main Wheels and Tires 47", Bell Cranks, Rudder Brackets

★★★ B-25 ACCESSORIES and ELECTRICAL ★★★

40+ Hamilton Standard 4G8, G9 Tach Generators, Carb. Heat Gate Actuators, Carb Heat Rise Selectors, Type 1 Oil Separators, Fire Detector Boxes, Oil and Fuel Transmitters, 1,500 Gal. Hyd. Pumps, (25+) P-1 Generators, (20+) Jack and Heintz J-5 Starters, C-5 Fuel Strainers, Pesco Wet Vac Pumps, (29) Prop Feathering Pumps and Motors, Heater Ignitors, Deice Distributor Valves, Starter Vibrators, Pitot Tubes, Thermo Couples, Oil Temp. Probes, Carb Temp Probes

★★★ TBM INVENTORY ★★★

TBM Brakes, TBM Wing Folding Cylinders, Engine Mount, TBM Exhaust Collectors, (2 Ea.) TBM Props, TBM-3 Exhaust Collectors

★★★ B-23 INVENTORY ★★★

Speed Ring Mount, Exhaust, Misc. Cowling, Landing Gear, Oil Tanks, Misc. Small Parts, Bomb Bay Door, 2 Rudders, 2 Elevators, Main Gear Doors, Horizontals, Hatch

★★ RADIAL ENGINE AIRCRAFT and WARBIRD INVENTORY ★★

Several Different Types of Pitot Tubes, B-52 Fuel Valves, Liquid Level and Fuel Transmitters, Large Selection of Selector Valves, Interior Lights, Linear Actuators, Relays, Starter Relays, Solenoid Switches, Air Stair Actuators, Large Selection of Delco Fuel Pump Motors, Inverters, Landing Lights, (Grimes for DC-4, 6 and 7) Sealed Beams, Rotating Beacons and Strobes, Pesco Fuel Pump Motors, Reverse Current Relays, Starter Vibrators, Hyd. Oil Filters, Cowl Flap Selector Valves, Carbon Pile Regulators, P2V Bomb Door Actuator Gear Boxes, Cowl Flap Linear Actuators, Several Thompson Fuel Booster Pumps, Approx. 150 New Thompson Fuel Booster Pumps, TFD-6800, Aux. Hyd. Pumps and Motors, Super Constellation Spinners and Backing Plates, Carb. Adapter Throats (DC-7), Fuel Flow Transmitters, Cowl Flap Drive Units and Motors, Tach Generators, Vickers and 1,500 Lb. Hyd. Pumps, Pressure Transmitters, Several Starters and Generators Including P-2 and Misc., Large Selection of Spark Plugs, Oil Separators, Fuel Strainers, J-47 Engine Ignition Units, 15" Round Oil Coolers, Oil Cooler Regulators, Large Selection of Whittaker Skid Valves, Janitrol and South Wind Heaters, Heater Ignition Boxes, CO₂ Cartridges, Landing Gear Retract Chains, Press Switches, Cannon Plugs, Microswitches, Type C-2 Fuel Press Signal Switches, Fire Bottles, Oxygen Cyl. and Bottles, Oil Press Warning Switches, Landing Gear Motors, Several New Goodyear Brake Assys. 24x7.50 w/3 Puck Calipers, T-28 Brake Rotors, Hyd. Cylinders and Actuators, Firewall Shutoffs, Mag Switches, Pulleys

★★ PBY and B-25 MAIN WHEEL and TIRES ★★

(40 Ea.) PBY and B-25 Main Wheel Tires, 47" 14 Ply, New and Used
 (18 Ea.) PBY and B-25 Main Wheel and Tire Assys.
 PBY and B-25 Main Wheel Tubes
 PBY Nose Wheel Tubes
 (13 Ea.) PBY Nose Wheel and Tire Assys.



SELLS SATURDAY, OCT. 19th AT 1085 A ST. SE, EPHRATA, WASHINGTON

CURTIS WRIGHT R-2600 ENGINES



(3 Ea.) R-2600-35 Engines, 0 Hrs. S.M.O.H. by Aerodex
(2 Ea.) R-2600-29A Engine Cores, Time Unknown
R-2600-20 Engine Core, Time Unknown
R-2600-29A Engine, T.T.: 2,575 Hrs., 546 Hrs. S.M.O.H., From R.C.A.F.
R-2600-13A Engine, T.T.: 1,321 Hrs., 302 S.M.O.H., From R.C.A.F.
R-2600-20 Engine, Time Unknown
R-2600-29A Engine, Time Unknown, Corrosion on Cylinders
R-2600-20 Engine, Time Unknown, Good Visual Condition
R-2600-29 Engine, Time Unknown, Bad Corrosion on Cyl. and Case
R-2600-20 Engine, 388 Hrs. S.M.O.H., Severe Blower Damage
R-2600-29A Engine, 4,520 T.T., 1,182 S.M.O.H., Missing 4 Cylinders
R-2600-29A Engine, Time Unknown, 1 Cylinder Missing
R-2600-29 Engine, Time Unknown
R-2600-20 Engine, Time Unknown, Some Rust
R-2600-29A Engine, Time Unknown, Poor Condition
R-2600-13A Engine, T.T.: 2,367 Hrs., 982 S.M.O.H.
R-2600-20 Engine, T.T.: 963 Hrs., 493 Hrs. S.M.O.H., 1st Overhaul
R-2600-29 Engine, Time Unknown, Full Q.E.C. w/Super PBV Mount
R-2600-13A Engine, T.T.: 1,075, 994 S.M.O.H., Full Q.E.C.
R-2600-8 Engine, Time Unknown
R-2600-7 Engine, Time Unknown, Some Light Corrosion
R-2600-13A Engine Cob, Time Unknown, Excellent Condition
R-2600-8 Engine Cob, Time Unknown, Good Condition
R-2600-13 Engine, Time Unknown, Marked Ground Purposes Only
R-2600-8 Engine, Time Unknown, Poor Condition
R-2600-3 Engine, Time Unknown, Good Condition
R-2600-13A Engine Cob, 3,397 T.T., 820 S.M.O.H.

**★★★ PBV INVENTORY ★★★
LANDING GEAR INVENTORY**

(3 Ea.) New L/H MLG Assys., (3 Ea.) New R/H MLG Assys., Several Used PBV Main Gears, (6 Ea.) Complete Nose Gear Assys., Main Gear Wishbones, (13 Ea.) PBV Nose Gear Doors L&R, Main Gear Axles, Main Gear Cylinders, Barrels, Scissors, Packings, Followers, Nuts, Locks, Bearings, Nose Gear Axles, Forks, Plungers, Pistons, Cylinders, Split Collars, Gear Bolts, LG Bell Cranks, Emergency Uplock Releases, Latch Bell Cranks, Upper and Lower Scissors, Shimmy Dampeners and Collars, N.G. Torque Tubes, Bushings, Up and Down Lock Latches, Retracting Arms, Strut Bumpers, Bushings, Up and Down Lock Latches, Retracting Arms, Strut Bumpers, Gear Arms, Gear Doors, Bumper Fittings, Several Timken MLG and N.G. Bearings and Races, Landing Gear Selector Buttons and Brackets, Nose Gear Lock Mechanisms, Several New and Overhauled Nose Gear Door Actuators, MLG Return Valves, N.G. and MLG Retract Cylinders, MLG Return Valves, LG Selector Valves, Sequence Valves, Etc.

★★★ HULL PARTS ★★★

Keel Parts, Bulkhead Fittings, Nose Parts, Uplock Brackets, Bearings, (2 Ea.) PBV Sea Anchors, Glands, Bushings, Nose Cross Beams, Uplock Fittings, Gear Door Operating Arms, Jack Links, Stiffener Housings, Actuator Links, MG Fittings, Lower Strut Fittings, Torque Housings, Anchor Parts, Door Frames, Skins, Sliding Hatches, Bubble Pneumatic Seals, Mooring Posts, Bombader Seat Supports, Etc.

★★ AIRFRAME INVENTORY ★★

Elev. Control Tubes, Control Stops, Flap Control Boxes, Control Locks, Control Surface Arms, Pulleys, Control Surface Push Pull Tubes, Bell Cranks, Stabilizer Links, Control Wheel, Throttle Quadrants and Inv., Throttle Bell Cranks, Hyd. Tanks, Landing Light Lenses, Mark IV Flare Chutes, Instrument Panel, PBV Catwalk Panels, Large Selection of Watertight Hatches, PBV Windshields, L/H & R/H, Slider Window, Large Selection of Z Bar, PBV Flooring, Angles, Formers, Fuselage Skins, Wing Access Doors, Wing Strut Attach. Fittings, Wing Bolt Center Attch., Strut Cuffs, Fairings, Station Hinges, Trim Tabs, Control Surface Horns, Several Wing Struts, Fronts and Rear

★★★ FLOAT INVENTORY ★★★

(16 Ea.) Floats L&R, Float Jack Screws, Strut to Wing Pins, Wing Gear Box Inv., Lock Mechanisms, Float Locking Links, Float Control Shafts, Outer Float Control Gear Box Assys., Lower Leg Fittings, Float Brace Fittings and Housings, Bumpers, Front Float Housings, Float Lock and Recoil Mechanisms, Upper Center Float Control Gear Box Assys., Screw Adjust Stops, Torque Tubes, Gear Box Gears, Float Lags and Fittings, Float Jack Screw Covers, Float Retracting Struts

★ ENGINE MOUNTS and COWLING ★

PB4Y Mount, PBV Stock Mounts, Cowl Supports, Cowl Flap Plungers, Engine Mount Bolts, Nose Cowl Supports, Super PBV Stainless Accy., Cowling and Dies, Super and PBV Cowling, (6 Ea.) PBV Stock Speed Rings, PBV Accy. Cows, Augmentor Covers, Cowl Flaps, Oil Cooler Flaps, PBV Dish Pans, Oil Scoops

★★ BRAKES and INVENTORY ★★

Several PBV Brake Assys., Steel and Bronze Brake Disc, Stationary and Rotating, Brake Hubs, Insulating Disc, Water Seal, O-Rings, Brake Seals, Expander Springs, Brake Valves

★★★ REBUILD INVENTORY ★★★

New Inventory for Overhauling the Following Types of Inv. Shimmy Dampeners, Accumulators, Unloading Valves, Down Lock Jack Assys., Main and Nose Gear Actuators, Brake Valves, Brake Debooster Valves, Etc.

**★★★ PBV ACCESSORIES ★★★
and ELECTRICAL**

Press. Valves and Switches, Relief Valves, Several Brake Valves, Brake Debooster Valves, Emergency Hand Pumps, Engine Driven Hyd. Pumps, Several Float Hoist Motors, Mag Switches, Voltage Regulators, Junction Box, Large Selection of Wiper Motors, Mechanisms, Blades and Drive Cables, Oil Tank Liquidometers, Oil Temp Control Units, 75+ Chandler Evans and Thompson Fuel Pumps AN-4101 Fuel Selector and Shutoff Valves, Prop Feathering Pumps and Motor Assys., Fuel Dump Valves, Fuel Flow Meters, Fuel Site Gauges, Oil Coolers and Mounts, Deice Pumps

★ PBV CONTROL SURFACES ★

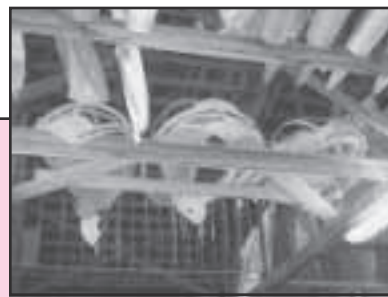
(10 Ea.) Stock and Super PBV Rudders; PBV-6A Rudder; (7 Ea.) Ailerons; Aileron Fillers, (12 Ea.) Elevators Leading Edges, 7 Wing Tips, Several Trailing Edges

★★★ PBV EXHAUST ★★★

Large Selection of PBV Exhaust Includes L/H & R/H Collectors, Short Stacks, Exhaust Stacks, Clamps, Etc.

★★ MISC. PBV INVENTORY ★★

Set of PBV Beaching Gear, PBV Jack Pads, Super PBV Sea Stands, Pilot and Co-Pilot Seats, Stock PBV Sea Platforms, Sea Slings (Engine and Prop) Tunnel Gun Hatch, Etc.



PBV BLISTERS and INVENTORY

L/H & R/H Rotating Bubble Frame (Military), Good Condition Less Glass, L/H & R/H Civilian Style Bubbles, Mold for PBV Blister, Good Selection of Bubble Glass

★★★ APU's ★★★



(6 Ea.) Type D-2 Mdl. V-32, 200 Amp APUs' Powered by 2 Cyl. Andover Engines; (3 Ea.) Homelite APU's, 200 Amp

★ PROPELLERS ★

(7 Ea.) Hamilton Standard 23E-250 Propellers for B-25 and Super PBV Standard PBV Toothpick Prop.

**★ HAMILTON STANDARD 23E-250 ★
PROPELLER INVENTORY**

Hubs, Distributor Valves, Cones, Roller Bearings, Cam Bearings, Retaining Nuts, Front and Rear Cones, Blade Packings, Blade Gear Segments, Dome Assys., Piston Assys., Spiders, Etc.

R-2600 ENGINE INVENTORY and ACCYs

Pistons, Intake Tubes, Intake Nuts and Packing, Valve Springs, Push Rods and Housings, Rocker Assys., Push Rod Hose, Spring Keepers, Rocker Arm Bearings, Tappets, Tappet Guides, Cam Followers, Tappet Ball Sockets, New Valves (Intake and Exhaust), Deflectors, Crankshaft Bearings, Rocker Box Covers, Engine Gears, Oil Pumps and Gaskets, Oil Filters, Engine Gaskets, Prop Governor Adaptors, Dual Accy. Drive, 90+ Bendix, Magnetos SF14LN, Coils, Condensers, Bearings, Ignition Harness, 28+ Holley Mdl. 1685 H.B. Carburetors, Holley Overhaul Parts, Slide Plates, Diaphragms, Poppet Valves, Holley Carb. Adapters, 30+ Stromberg Carburetors PR-48A4, Various Other Accessories, Hyd. Pumps, Prop Gov.

★ R-2600 CYLINDERS ★

(105 Ea.) R-2600 Front Cylinder Cores
(105 Ea.) R-2600 Rear Cylinder Cores

★ ★ ★ ELECTRICAL ★ ★ ★

Circuit Breakers, Toggle Switches, Electrical Connectors, Cannon Plugs, Aircraft Wiring, Etc.

★ ★ ★ HARDWARE ★ ★ ★

AN and MS Bolts, Screws, Nuts, Stainless Screws, Countersink Screws, Washers, Cherry Rivets, Solid Rivets, Blind Rivets, Adel Clamps, Hose Clamps, AN Hyd. Fittings (Large Selection), Nut Plate, Pins, Grommets, Etc.

NOTE: This will be a very large auction and we will be running two selling rings at the same time periodically on Saturday. So come prepared with help.

FORKLIFTS

★ ★ ★ SHOP EQUIPMENT ★ ★ ★



Hyster Mdl. VT-75 7,500 Lb. Forklift, 4 Cyl. Gas, Dual Front Tires, Single Rear, 18' Single Stage Mast



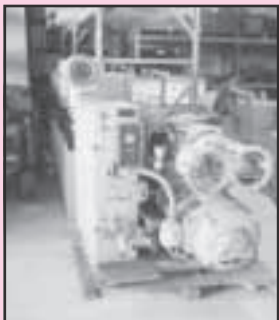
Clark 5,000 Lb. Forklift, Hard Rubber Tires, Gas, 14' Mast



Towmotor Mdl. 680PG 8024 Forklift, 8,000 Lb., Gas, Dual Pneumatic Front Tires, Dual Stage 16' Mast



Pexto Mdl. XC52 Sheet Metal Shear 52"



Roper Whitney Mdl. 68 Sheet Metal Punch 24" Throat w/Dies
31" Sheet Metal Roller



Starter Generator Test Stand with Digital Readout, Dual Head, 30 H.P. U.S. Motors, Orig. Mfg. by Airesearch



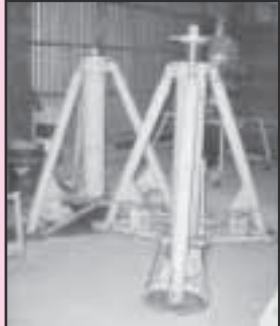
Sioux Mdl. 645 Valve Face Grinding Machine w/ Rocker Arm Attch.

Sioux Angle Head Valve Seat Driver Set

Grieve MT-550 Oven
Champion Spark Plug Tester, Cleaner, Vibrator Cleaner and Gapper
Nitrogen Cart and Gauges (2 Ea.) Oxygen Acetylene Torches and Carts
Cylinder Working Stand
Delta Milwaukee Floor Mdl. Variable Speed Drill Press
Electro Magic Pressure Washer
WF Wells Horizontal Band Saw



Di-Arco 24" Box and Pan Brake Bench Top
Di-Arco 24" Bench Top Shear



(2 Ea.) Regent Mdl. 989R, 40 Ton, P2V Wing Jacks



Lockheed P2V Tail Jack
South Bend Bench Top Lathe, 36" Bed, Belt Driven
Delta 8" Table Saw and 4" Jointer
Timberline Mdl. 10S 10" Commercial Table Saw, 5 H.P., 1 Ph.
Several Bottle Jacks
Singer Commercial Sewing Machine
Reeves, Cox and Stevens Digital Aircraft Scale Type C-1, (3 Ea.) 50,000 Lb. Load Cells



Miller Mdl. AEAD-200LE Arc Welder w/Onan Gas Engine on Trailer



(2 Sets, 4 Ea.) PBY Main Jacks
PBY Nose Jacks



(3 Ea.) Hyd. Engine Hoists
Miracle Blue Boy Paint Shaker, 5 Gal., 1 Gal. and Spray Can
Grayco Pneumatic Pumps
Barrel Pumps
Various 2 Cyl. Gas Engine Transfer Pumps
Several 2 Wheel Dollies
Several Bench Grinders and Vises
Tire Bead Breaker
Electric Parts Washer
Hand Operated Sheet Metal Shrinker Stretcher
Bendix Starter Prony Break
Aircraft Type E-1 Tire Dolly, 36" to 56"
Atlas Bench Top Drill Press



Lincoln Horizontal Air Compressor, 3 H.P., Dual Stage, 1 Ph.
Kellogg Air Compressor, 7.5 H.P., Dual Stage



Tennant Mdl. 42 Heavy Duty Floor Sweeper Vac, Gas Engine



Fabtex Electric Manlift 500 Lb., 15' Height
Ridgid Pipe Threader and Cutter
Pipe Vise
Banding Machine
Craftsman 6" Belt and Disc Sander
Paint Pots
(3 Ea.) Fresh Air Pumps
Shop Fans
Fire Extinguishers

TOOLS

Cylinder Compression Test Set, High Press. Tire Gauges, Cherry G-704 Rivet Puller, Cherry G-15 Rivet Puller, Pneumatic Tools Including Screw Gun, Sander, Ratchets, DA Sander, Impact Wrench, Rivet Puller, Etc. Makita Electric Nibbler, Hose Mandrel Set, Screw Extractors, Tubing Cutters and Flaring Tools, Cable Swedgers, Tubing and Conduit Benders, Mag Synchronizers, Electric Drills, 1" Drive Socket Sets, Drill Bits, Hilti Fastening System, Soldering Guns, Cable Tensionometers, Several Little Giant Ladders, H.D. Grinders, C-Clamps

AVIONICS AND INSTRUMENTS

Good Selection of PBY Instruments
Misc. Avionics

★ SPECIALTY ★ TOOLS

Large Selection of Hamilton Standard Prop Tools
Wright R-2600 Tools
PBTools

★ SHELVING ★ and BENCHES

Large Selection of Metal Shelving, All Sizes
Pallet Racks
Large Selection of Work Benches Including (3 Ea.) Aluminum Roll-A-Round Work Benches, Several Cabinets, All Sizes, Racks, Etc.

1978 Komfort Travel Trailer, 38' 5th Wheel, Park Model w/2x6 Wall Alaska Package, Dual Furnace and Air



1952 GMC Military 6x6 Truck, 2 1/2 Ton w/11' Snow Blade, Allison Auto Trans.



(3 Ea.) Vogt Brothers 250,000 BTU Heaters, w/Gas Engines
Surface Combustion Corp. Type F-4 (200,000 to 400,000) BTU Heater
Herman Nelson BT 400-1 400,000 BTU Heater, Gas Engine

AUCTIONEER'S NOTE: The owners of Slafco Inc. and Aires Aire have decided to retire 100% from the aviation business. They have, therefore, contracted with Starman Bros. Auctions to sell their entire group of aviation parts, aircraft and equipment. This auction will offer one of the largest selections of PBY aircraft and inventory sold, as well as large groups of B-25 inventory, vehicles, equipment and tools.



1959 Chevrolet Viking 60 Flatbed Truck, 235 Six Cyl., 4x2 Trans. Boom Truck w/Pitman Hydra-Lift

6,000 Lb. Boom
1949 Ford F-5 Panel Truck
Toro Riding Lawn Mower w/52" Deck

(3 Ea.) 36' Van Trailers for Storage
38' Furniture Van for Storage
30' Dorsey Drop Deck Van
Trailer Converted to a Shop
Kinematic Controls Engine Pre-Oiler

Davco Start Cart Less Batteries
Military Generator Trailer, 2 Wheel, 2 1/2 Ton
PB Maintenance Stand
(4 Ea.) B-1 Maintenance Stands
Large Selection of Aluminum Scaffolding
12' 2 Wheel Tilt Bed Trailer



Clark 4,000 Lb. Tug w/7' Snow Blade, 6 Cyl., 3 Spd., 12 V.



Davey Type H-1 400,000 BTU Heater, Diesel Motor

★ ★ ★ PBW WRECKAGE and ★ ★ ★ MISCELLANEOUS



PBW Super 6A Wreckage Includes Nose Turret Ring, Main Gears and Several Other Parts



(3 Ea.) PBW Horizontal Stabilizers w/Vert. L/H and (2 Ea.) R/H Outer Wing Panels Standard and Super Center Section

★ ★ ★ MISCELLANEOUS ★ ★ ★

Heaters, Fans, 5606 Fluid, Oil, Spray Paints, Grease, WD-40, Gear Oil, LPS, Dope and Fabric Working Materials, Hangar Maintenance Materials, Dimensional Lumber, Railroad Ties, Tongue and Groove Roofing Board, Fifth Wheel Plate, Building Electrical Inv., 1/4 Turn Oil Barrels, Platform Scale, Electric Gate Opener, 1,300 Gal. Poly Tank, Casters, Steel Fence Post, Large Selection of Scrap Iron and Pipe, Etc.

TERMS: Cash, Certified Funds, or Company Check ONLY if accompanied by Bank Letter of Guarantee!!! NO EXCEPTIONS! Wire Transfers will be accepted with a 20% nonrefundable deposit day of sale. We also accept MasterCard and Visa. A 3% Buyers Premium will apply to this auction. If payment is Cash, Check, Certified Funds or Wire Transfer the 3% Buyers Premium will be waived.

Everything sells "AS IS, WHERE IS" with no warranties implied or expressed. Neither the auctioneer nor owners shall be liable for any incorrect description, fault, or defect. Everything positively sells to the highest bidder. Payment must be made in full day of sale. No property removed until settled for. Auctioneer not responsible for accidents or stolen property. All counts are approximate.