

**3
DAYS**

AVIATION

AUCTION

**FRIDAY, SATURDAY and SUNDAY
FEBRUARY 27, 28, & 29, 2004**

Starting at 9:00 A.M. — All Three Days

ABSOLUTE AUCTION

**SALE SITE PHONES:
(480) 396-0380 or (480) 396-0395.**

AIRLINE CONNECTIONS: Most all major airlines into Phoenix Sky Harbor Airport. Private aircraft can fly directly into Falcon Field Airport. The identifier is FFZ. The airport is located in the east valley east of Phoenix. Falcon Executive Aviation is the F.B.O. to contact for fuel, aircraft parking or rental cars.

— HOTELS —

- | | | |
|---|---|--|
| HOST HOTEL:
Holiday Inn Hotel & Suites
1600 S. Country Club Drive,
Mesa
480-964-7000
NOTE: This Holiday Inn is offering an \$84 rate to include full buffet breakfast. Just mention Starman Bros. Auctions when making reservations. | OTHER HOTELS:
Holiday Inn Express
480-985-3600
Best Western Mezona
480-834-9233
Best Western
480-964-8000
Best Western Superstition Springs
480-641-1164
Fairfield Inn
480-829-0700
Sheraton Mesa Hotel
480-898-8300 | Days Inn
480-981-8111
Colonade Suites
480-981-8888
Ramada Inn Suites
480-964-2897
Travel Lodge
480-964-5694
Travel Lodge Suites
480-832-5961
Motel 6
480-834-0066
Best Value Inn
480-969-3600 |
|---|---|--|

ANNUAL WINTER CONSIGNMENT AUCTION 4901 FALCON DRIVE • FALCON FIELD AIRPORT • MESA, ARIZONA

PRSR FIRST CLASS
U.S. POSTAGE
PAID
PERMIT NO. 7
WATERLOO, NE

FIRST CLASS

NOTE: Space is available for parking of motor homes and travel trailers. No hook ups.
Golf carts will be available for rent for those wanting to get around the airport. We would highly suggest, if you would like to reserve a cart to call the sale site prior to the auction.

TERMS: Cash, Certified Funds, or Company Check ONLY if accompanied by Bank Letter of Guarantee!! NO EXCEPTIONS! Wire Transfers will be accepted with a 20% non-refundable deposit day of sale. We also accept MasterCard and Visa. A 3% Buyer's Premium will apply to this Auction. If payment is Cash, Check, Certified Funds or Wire Transfer the 3% Buyer's Premium will be waived.

FLYING AIRCRAFT TERMS: Must be Cash, or Certified Funds. A Company Check will be accepted ONLY with an IRREVOCABLE Letter of Credit from your Bank. If a Wire Transfer or Bank Draft is used we need a 20% NON-REFUNDABLE DEPOSIT Day of Sale via one of the above mentioned forms.

NOTE: Some aircraft may be subject to prior sale and there may be more aircraft added by sale day. Call for information.

NOTE: We will be running two selling rings several times throughout the weekend, so come prepared.

- SALE ORDER —**
- FRIDAY, FEBRUARY 27, 2004 —**
Landing Gear, Wheels, Brakes, Exhaust, Control Surfaces, Cowling, Mounts, Doors, Wheel Pants, Wing Tips, Fuselages, Wings, Stearman T6, Cub, New Beechcraft, Cessna and Piper, All Types of Airframe, Seats, Interior
 - SATURDAY, FEBRUARY 28, 2004 —**
Finish Airframe Inv., Electrical, Propellers, Accessories, Cont. and Lyc. Engine Inv., Crankcases, Engines, Crankshafts. At 1:00 P.M., Saturday, Flying Aircraft, Project Aircraft, Shop and Ramp Equipment and Hand Tools.
 - SUNDAY, FEBRUARY 29, 2004 —**
Finish Engine Inv., Cylinders, Garrett Inv., Instruments, Avionics, Avionics Test Equip., and Repair Inv., Manuals

STARMAN BROS. AUCTIONS INC.
1240 Royal Drive • Papillion, NE 68046-2082
(402) 592-1933

www.starmanauctions.com
Return Service Requested

STARMAN BROS. AUCTIONS INC.

1240 Royal Drive • Papillion, NE 68046-2082
(402) 592-1933

STARMAN BROS. AIRLINE SERVICES, INC.

9000 NW 15th Street • Miami, FL 33172
(305) 477-6865

www.starmanauctions.com



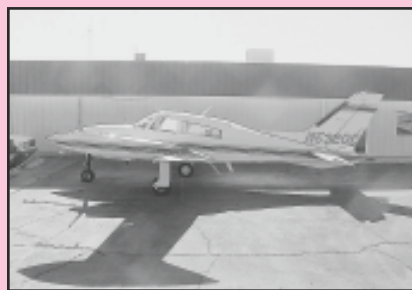
★★★ FLYING AIRCRAFT ★★★



1981 Cessna 207 A
N-9349M, S/N 20700682
Total Time: 12,162 Hrs.
Engine: 28 Hrs. S.M.O.H. by America's Aircraft Engines
Propeller: 28 Hrs. S.O.H.
Avionics: King KT-78A Transponder
Dual King KY-196 Comms
King KNS-180 Nav.
King KN-53 Nav.
King KR-87 ADF
King KMA-24A Audio Panel w/3 Light
Navomatic 400 Auto Pilot
Sigtronics Intercom
New Glass, New Paint, New Leather Interior, N.O.H.



1977 Beech 76 Duchess
N-6002C, S/N ME-120
Total Time: 6,195 Hrs.
Left Engine: 237 Hrs. S.M.O.H.
Right Engine: 352 Hrs. S.M.O.H.
Left Prop: 260 S.O.H.
Right Prop: 1,460 S.O.H.
Avionics: King KT-76A Transponder
King KX-155 Nav Com
King KNS-80 Nav System
King KR-87 ADF
King KY-197A DME
King KMA-24 Audio Panel
Century III Auto Pilot
Sigtronics Intercom



1979 Cessna 310 R II
N-5320C, S/N 310R-1539
Total Time: 7,182 Hrs.
L/H Engine: 721 Hrs. S.M.O.H. (1700 TBO)
R/H Engine: 1,186 Hrs. S.M.O.H. (1700 TBO)
L/H Prop: 1,496 S.O.H.
R/H Prop: 1,417 S.O.H.
Both Props Have Electric Delce
Avionics: Dual King KX-155 Digital Nav Comms w/Glide Slope
Cessna 300 Transponder (Encoding)
King KR-87 ADF
King KN-64 DME
King KMA-24 Audio Panel w/3 Light
Bendix WK Radar
Cessna 400B Auto Pilot w/All Couplers
PM-1000 II Intercom
Yaw Dampener, Delce Boots (Good Condition), Alcohol Windshields, Good Paint, Fair Interior Six Seats, Good Maintenance History



1977 Piper PA31-350 Navajo Chieftain
N-2017 T, S/N 31-7752047
Total Time: 7,861 Hrs.
Left Engine: 1,461 S.M.O.H.
Right Engine: 1,287 S.M.O.H.
Left Prop: 478 S.O.H.
Right Prop: 622 S.O.H.
Avionics: Dual King KT-76A Transponders
King KLN-90B GPS
King KX-175B Nav Com
King KY-196A Comm
King KNS-80 Nav.
King KR-87 ADF
King KMA-24 Audio Panel w/3 Light
Bendix Weather Radar
KEC-200 Auto Pilot Coupled
Has Long Range Tanks, VG's, Cargo Door, No Damage History, Air Conditioning

1964 Piper PA-30 Twin Comanche
N-10KC, S/N 30-309
Total Time: 1,930 Hrs.
L/H Engine: 261 Hrs. S.M.O.H.
R/H Engine: 916 Hrs. S.M.O.H.
L/H Prop: 615 Hrs. S.O.H.
R/H Prop: 615 Hrs. S.O.H.
Avionics: Narco 111-B Nav Com w/ GS.
Narco 122 Nav.
Garmin 250 XL GPS Coupled to VOR
Narco CP-136 Audio Panel w/3 Light
Collins 350 Transponder w/Mode C
Narco 190 DME
Bendix Digital ADF



HSI
S-Tec 40 Auto Pilot w/Altitude Hold
New Paint in 1996, New Tinted Side Windows, Push to Talk on Both Yokes, Good Interior, Very Nice Low Time Twin Comanche

★★★ GLIDER ★★★



Make: POPS PZL-BIELSKO
Model: Jantar STD SZD-41A
N-73AS
S/N B816
Total Time: 1,063 Hrs.
Glider has some damage in wheel area. Wings have wing root and leading edge damage, will be sold with trailer

★★★ AIRCRAFT PROJECT ★★★



1975 Beech Sierra B24R
S/N: MC-383
Total Time: 1,195
Engine: Lyc. IO-360-AIB, 1,195 Hrs. T.T.
Engine is non prop strike engine and will be sold separate of Airframe
Aircraft came back from the Philippines and needs to be reassembled and minor repairs made. Needs new interior



2000 Cessna 172 S
Total Time: 1,300 Hrs.
Engine: Lycoming IO-360-L2A. Engine was disassembled after the prop strike. Crankshaft has been certified. Engine will be sold disassembled and separate from the airframe.
Aircraft has lower cowl and firewall damage, both wings have heavy damage, tail surfaces are damaged.
Avionics: King KX-155A, King KMA-26, King KT-76C, and King KT-208 Ind.



1967 Piper PA28-140
Total Time: 2,295 Hrs.
Engine: Lycoming O-320 w/756 Hrs. S.M.O.H. This engine appears to have no damage and will be sold separate of the airframe.
Airframe has very little damage except for the R/H wing and landing gear. Aircraft ran through a ditch and damaged the wing and gear. Will make an easy rebuild.
Avionics: King KX-155, King KR-86, King KMA-24, Narco AT-50A
Cessna 120 Project
Project is approx. 75% complete w/fuselage on wheels, motor mount, cowling, rag wings, ailerons, flaps, rudder, vertical fin, horizontal stab., and elevators. Has seats, side windows, and doors. No windshield. Aircraft mainly needs reassembly. (No logs or paperwork at this time.)



1976 Cessna 172
Total Time: 10,601 Hrs.
Engine: Lycoming O-320-E2D w/788 Hrs. S.M.O.H. Has had a prop strike and will be sold separate of the airframe.
Airframe has nose gear damage, both outer wings damaged, propeller strike. Easy rebuild.
Avionics: King KX-175B, Cessna Transponder and Cessna 300 ADF

★★★ VEHICLES ★★★



1986 Ford 13 Passenger Bus on Ford 350 Econoline Frame w/National Coach Corp. Body. 7.5 Liter V-8, Auto. Trans., AM/FM, Front and Rear Air, Has Roof Top Air Conditioning Unit w/Onan Generator, Rear Baggage Storage



1977 GMC Sierra 25 3/4 Ton Pickup. Small Block V-8, Auto. Trans., Air Conditioning, Disc Brakes, Dual Tanks, New Rear Drums and Shoes
1996 EZ-CO Golf Cart, 4 Place, Battery Powered
(2 Ea.) 20" Folding Bicycles



2000 GEM Car Mdl. E825, Battery Powered, 4 Place, Sony CD Player, Street Legal

FUSELAGES & WINGS

Piper PA28-180 Fuselage
Air Tractor 301 Fuselage and Wings, Damaged, No Paper Work
Cessna 172 RG Wings, Heavy Damage (2 Ea.)
1966 C-320 Wings
1978 C-182 Wing
1985 C-152 R/H Wing, Minor Damage
C-210 R/H IB Tank Section
C-140 Fuselage on Wheels
C-140 Rag Wings

★★★ HAND TOOLS ★★★

Cherry and Huck Pneumatic Rivet Pullers, Large Selection of Pneumatic Drills Including Right Angle, Pneumatic Rivet Shavers, and Screw Drivers, Rivet Guns, Hi Lock Drivers, Pneumatic Nut Runners, Large Selection of Clecos, Pneumatic Cleco Guns, Heat Guns, Pneumatic Sealant Dispensers, AirVacs, Large Selection of Reamers, Drill Bits, Chatillon DPPH-250 Gauge, Belt Tension Gauge, High Press Tire Gauges, Mini Monitor Water Contamination Detector Kit, Pneumatic Paint Guns, Delce Belt Tension Testers, Strut Pump, Electric Drills, Whitney Hole Punch, Cherry Hand Rivet Pullers, 5 Gal. Binks Paint Pot, Brake Bleeder Pot, Grease Guns, Rivnut Tools, Bottle Jacks, C-Clamps, Come-A-Longs, Buffer, Sockets, Combination Wrenches, Hammers, Wood Planes, Brace and Bits, Aviation Snips, Electric and Hand Saws, Band Saw Blades, (4 Ea.) Vacuum Pumps, Fischer Versa Bath; Craftsman and Misc. Other Toolboxes, Cylinder Bore Gauges, Depth Gauges, Micrometers

★★★ MUFFLERS & EXHAUST ★★★

Very Good Selection of Mufflers and Exhaust for All Makes and Models of Aircraft will include: Single and Twin Engine Mufflers, Tail Pipes, Shrouds, Various Turbine Engine Exhaust Stacks, Radial Engine Exhaust, Turbo Transitions, Misc. New and Overhauled Exhaust

★★★ WHEEL & BRAKE INVENTORY ★★★

Very Good Selection of Wheel and Brake Inv. Including Cleveland, Goodyear, Goodrich, Etc. Sizes Includes 5", 6", 8", 10" Etc. for Cessna, Piper, Beech, Mooney, Lear Jet, Citation, King Air, Queen Air, Bonanza, Etc. 8-50x10 Wheels and Tires, 34x9.9 Wheels and Tires, 18x4.4 Wheels, Cleveland 600x6 Wheels and Tires, Multi Disc Brakes, New Brake Discs, Calipers, Pistons, Master Cylinders, Shimmy Dampeners, Brake Pucks and Linings, Torque Plates, Wheel Bearings, New and Used Tires, Etc.

★ ★ ★ GROUND SUPPORT & SHOP EQUIPMENT ★ ★ ★



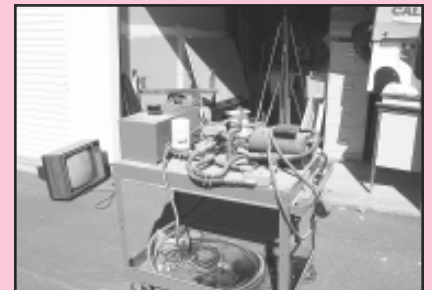
Minneapolis Moline 4,000 Lb. Aircraft Tug, 4 Speed, 6 Cyl.
 (2 Ea.) Hobart Jet Ex III Ground Power Units, 28 Volt, 750 Amp Continuous, 1500 Amp Peak, 6 Cyl. Ford Engine, (1) Unit has Voltage Regulator Out
 Hobart Jet Ex II Ground Power Unit, 28 Volt, 750 Amp Continuous, 1200 Amp Peak, Ford 6 Cyl. Engine



Six Bottle Oxygen Cart
 (2 Ea.) Aircraft Full Size Baggage
 Beechcraft Factory Aircraft Jack
 (2 Ea.) Jack House High Wing Aircraft Jacks
 (2 Ea.) Jack House 24" Low Wing Aircraft Jacks
 (4 Ea.) Airborne P/N 2-169 36", 3 Ton Aircraft Jacks
 HTP America Inc. Versa Mig, Mig Welder



Beechcraft Factory Aircraft Jack
 Barrel Top Electric Parts Cleaner
 Battery Operated Magnaflex Machine, 6' Bed
 Magnaflex DeMag Bench
 Electric 1/2 Ton Chain Hoist
 Dayton 2 Ton Electric Chain Hoist
 Masking Paper Dispenser and Paper Hanger Winches
 Hand Tow Bars



Burch 5606 Hyd. Mule 3,000 Lb. (3 Ea.) Tronair Tow Bar Heads, (1 Ea.) Queen/King Air
 (2 Ea.) Citation III Heads
 (3 Ea.) Stanley Vidmar Cabinets
 Graco Series 900 Spray Painter
 Stainless Steel Parts Cleaner Tanks

★ ★ LANDING GEAR & INVENTORY ★ ★



Both Main and Nose Gears for Most Models of Cessna, Piper, Beech, Mooney, Commander, Etc. Single and Twin Engine Including the Following: C-185 Main Gear Legs, C-185 Tail Wheel Assy., C-182 RG Main Gear, C-210 Complete Nose Gear, C-414 Nose and Main Gears, PA-28-151 Complete Nose, PA24-260 Forks, PA-30 Nose Gear, PA-28 Main Gear, Beech Lower Gear Legs, Beech Nose Steering Links, Beech Landing Gear Actuators and New Rods, Navajo Main Gears, C-206 Mains, 206 Nose Forks and Pistons, 210 Nose Pistons, Cessna 210 Nose Gear Steering Assys., Piper Retractable Main Gears, Aero Star Main, C-172 RG Nose and Main Gear, American Grumman Nose Forks, Bonanza Mains and Nose Gears, Etc. Inventory will include Trunions, Barrels, Beech Gear Actuators, Nose Forks, Retract Rods, Scissors, Torque Tubes, Cessna and Piper Hyd. Tanks, Landing Gear Motors, Switches, Gear Boxes, Uplocks, Nose Steering Rods and Actuators, Landing Gear Door Actuators, Retract Links, Etc.

★ ★ ★ STEARMAN PARTS ★ ★ ★

Gas Tank, Gear Leg, BT/Stearman Brakes, Hub Caps, Wheels, Tail Wheel, 1 Set of Upper Wings, Some Struts, Misc. Small Parts and Fittings, Some N3N Inv.

★ ★ ★ T-6 PARTS ★ ★ ★

Wing Tips, Vertical Fin, Rudders, Elevators, New Left Hand Aileron w/Trim Tab, 2 Rear Canopy Sections, Sliding Canopy Sections, Center Canopy Sections, May West Wheel Well Fairings (1 Set), Seats, Cockpit Control Rails w/Trim, Tab Wheels, Control Tubes, Starter Pedal, T-6 Wheels, Hydro Tank, Elevator and Rudder, Trim Tabs, Rear Cockpit Floor, Oil Tank, Engine Cowlings, New Wheel Bearings, T-6 Instruments

★ ★ ★ VINTAGE AIRCRAFT PARTS ★ ★ ★

P-51 Tail Wheel (New)
 Waco UPF - 7 Wheels
 C-45 Throttle Quadrant

Several Types of Oil Coolers
 New Tires (Maybe C-47 and P-51)
 C-45 Motor Mounts

★ ★ CUB & SUPER CUB INVENTORY ★ ★

Good Selection of Cub and Super Cub Control Surfaces, Cowling, Misc. Main Gear, Tail Wheels

★ ★ ★ T-34 INVENTORY ★ ★ ★

Engine Cowl, Wing Tips, Main Landing Gear, Boxes of Misc. New Small Parts, Canopy Rollers

★ ★ ★ WING TIPS & WHEEL PANTS ★ ★ ★

Very Good Selection Wheel Pants for Cessna and Piper Nose and Mains
 Large Selection of Wing Tips for all Types of Aircraft, Plastic, Fiber Glass, Metal.
 Some w/Strobes and Nav Light
 Good Selection of Control Surface Tips

★ ★ ★ COWLING ★ ★ ★

Good Selection of Cowling for Cessna, Piper, Beech, Uppers and Lower, Includes C-172 Bottom Cowl, C-310 Cowl and Side Panels, 300 and 400 Series Nose Bowls, Aztec and Apache Cowl Side Panels, Piper Cowl, Etc.

★ ★ SPINNERS & BACKING PLATES ★ ★

Large Selection of Cessna, Piper and Beech Spinners and Backing Plates. Includes Two and Three Bladed. Heated Prop Slip Rings, Etc. New Navajo Composite Spinner

★ ★ ★ FUEL TANKS & CELLS ★ ★ ★

Good Selection of Cessna and Piper Wing Fuel Tanks. Includes C-150 - 172, C-337 Wing Tanks, Piper Wing Tanks, Piper Wing Tip Tanks, Cessna 310 Tip Tanks, Beech Fuel Cell, New Piper Cherokee Tank

★ ★ ★ ENGINE MOUNTS ★ ★ ★

Good Selection of Engine Mounts for Cessna and Piper, Misc. Beech. Includes C-182, PA-32RT Mount, Cheyenne, PA-31, Etc.

★ ★ ★ LIFT STRUTS ★ ★ ★

Good Selection of Cessna Lift Struts, Misc. Piper Struts, Several Strut Cuffs

★ ★ ★ SEATS & INTERIORS ★ ★ ★

Very Good Selection of Seats for Cessna, Piper, Beech, Fronts and Rears Includes Articulating, Large Selection of Seat Belts, Seat Track, Cargo Nets, Complete Interiors Including 1999 C-172, Interior Plastic, Large Selection of Interior Tables, Cabinets and Dividers, Arm Rests, Overhead Lights, Etc.

★ ★ ★ DOORS ★ ★ ★

Good Selection of Cessna, Piper, Beech, Mooney and Misc. Cabin Doors. Several Baggage Doors for All Types of Aircraft. Very Good Selection of Landing Gear Doors Including Beech

★ ★ ★ CONTROL SURFACES ★ ★ ★

Very Good Selection of Control Surfaces for Cessna, Piper, Beech, Mooney, Commander, Etc., for Both Single and Twin Engine Aircraft Will Include Vertical Fins, Rudders, Horizontal Stabilizers, Elevators, Flaps, Trim Tabs, Samples Include C-150/152, C-172 and 172 RG, Good Selection of C-310 Surfaces, C-182, 206 and 210 Vertical Stabilizers, Cessna Flaps, Beech Elevators Including King Air, Beech Ailerons, (Bonanza, Baron), King Air Ailerons, K.A. Horizontal Stab. Late Style, Good Selection of Piper Control Surfaces. We expect Approx. 500 Control Surfaces.

★ ★ ★ BEECHCRAFT INVENTORY ★ ★ ★

Will Include Inventory for Bonanza, Baron, Queen Air, King Air, Etc. Actuators and Rods, Air Vents, Angles, Bath Tub Fittings, Bellcranks, Bushings, Cables, Brake Master Cylinders, Channels, Cover Plates, Extrusions, Fairings, Flap Actuators, Handles, Flap Motor Housings, Flap Tracks, Fuel Caps and Selector Valves, Fuel Filters, Hinge Assys., Horns, K.A. Bearings, K.A. Brake Pads, K.A. Cowl Latches, K.A. Engine Control Links, K.A. Flap Actuators, K.A. Flap Gear Boxes, K.A. Flap Tracks, K.A. Landing Gear Switches, K.A. MLG Actuator, K.A. Fuel Drain Valves, K.A. Outflow Valves, K.A. Trim Tabs, K.A. Shut Off Valves, K.A. Wing Bath Tub Fittings, Link Rods, Twin Bonanza NLG Doors, Nose Bowls, Nozzles, Panels, Overlay Panels, Pullies, Switches, Relays, (Ribs 300 Ea.), Rod Ends, Shafts, Shear Pins, Control Surface Skins, Spars, Landing Gear Stops, Stringers, Wing Tips, Windows, Window Trim, Etc.

NOTE: Beechcraft OEM will be sending a good selection of new Beechcraft Inv. from the factory. This will include inventory for the Beech Musketeer through the Baron, Queen Air and some King Air. A complete part # list can be found on our web site, www.starmanauctions.com. Click Upcoming Auctions Winter Conignment.

★ NEW CESSNA & PIPER INVENTORY ★

Cam Loc's, Fuel Caps, Window Latches, Seat Rollers, Switches, Knobs, Door Stops, Door Hinge Pins, Lights, Skins, Control Cables, Decals, Crush Caskets Brackets, Ribs, Fittings, Seat Rail, Bushings, Cowl Latches, Oil Door Latches, Control Surface Bearings, Door and Window Seals, Shims, Springs, Collars, Supports, Electrical Inventory, Hinges, Etc.

★ AIR TRACTOR CONTROL SURFACES ★

Flaps, Elevators, Vertical Stabilizers, Rudder, Tail Wheel Assy.

BE SURE TO VISIT OUR WEB SITE!
www.starmanauctions.com

STAR MAN BROS. AUCTIONS INC.
 240C Royal Drive • Raleigh, NC 27606-2082
 (402) 592-1933

STAR MAN BROS. AIRLINE SERVICES, INC.
 9000 NW 15th Street • Miami, FL 33172
 (305) 477-6865 • www.starmanauctions.com

★ ★ ★ ENGINES ★ ★ ★



Lyc. O-290 Engine Core
 Lyc. O-235 L2C Normal Runout
 Lyc. IO-540-K1G5D Engine Core
 Lyc. O-360-A4M Complete w/Logs, 615 S.M.O.H.
 Lyc. O-320-D2J Runout No Prop Strike, Logs
 Lyc. IO-360-L2A Complete w/Logs, Minor Damage
 Cont. TSIO-520-A/F Engine Core, 847 S.M.O.H.
 Cont. TSIO-520-B Engine Core, 64 S.M.O.H.
 (2 Ea.) TSIO-520-LB Engine Cores, No Logs
 Lyc. TIO-540-A2B Engine Core, 660 S.M.O.H.
 Cont. IO-520-BA Engine Core, 371 S.M.O.H.
 Cont. IO-470-L Engine Core 446 S.M.O.H.
 Cont. IO-470-V Engine Core, 694 S.M.O.H.
 Cont. IO-520-L Engine Core, No Logs
 Cont. Tiara Engine Core
 (2 Ea.) Cont. 65 Engine Cores
 (2 Ea.) Lyc. O-145-B2 Engine Cores
 (2 Ea.) Cont. 4 Cyl. Ground Power Unit Engines
 Jacobs R-755-9 Engine Core
 M-14P Radial Engine Core 365 S New Damaged

The following engines have some type of crash damage from light to heavy.

Lyc. TIO-540-J2BD Engine Damaged
 Lyc. LTIO-540-J2BD Engine Damaged
 (2 Ea.) Lyc. O-360-A4M Engines Damaged
 (2 Ea.) Cont. TSIO-470-B Engines Damaged
 Cont. O-200 Engine Damaged
 Lyc. LO-360-AIG6D Engine Damaged
 (2 Ea.) Lyc. O-320-CIA Engines Damaged
 Lyc. O-320-B2B Engine Damaged
 (2 Ea.) Cont. IO-360-ES Engines Damaged
 Lyc. O-235-L2C Engine Damaged
 (2 Ea.) Lyc. TIO-540-U2A Engines Damaged
 (2 Ea.) Lyc. TIO-540-CIA Engines Damaged

RADIAL ENGINE INVENTORY

P&W R-1340 Engine, Crash Damaged
 P&W R-1340 Engine Inventory
 P&W R-985 Engine Inventory
 R-985 Cylinder Cores
 E-80 and 756 Starter Cores
 Radial Engine Magnetos
 Radial Engine Oil Coolers and Fuel Pumps
 Generators

★ ★ ★ ACCESSORIES ★ ★ ★

Carburetors: MA-3SPA, MA 4-5, Various Pressure Carburetors
 Starters: 12 and 24 Volt Prestolite, Delco, Cont.
 Alternators: 12 and 24 Volt Prestolite, Delco, Ford, Motorcraft
 Generators: Various Amps
 Oil Coolers: Cont. and Lyc. Front and Rear Mount
 Turbo Chargers: Garrett and Ray Jay
 Waste Gates and Controllers: Good Selection
 Fuel Pumps: Large Selection Includes Romec, Thompson, Airborne, Dukes, Pesco, Bendix, Engine Driven, Boost, Submergible, Etc.
 Hyd. Pumps: Several of All Types Including Lyc. and Cont.
 Right Angle Starter Drives and Inv.
 Wet and Dry Vac Pumps: Good Selection
 Tach Generators: Good Selection All Types
 Prop Governors: Good Selection, McCauley, Hartzell, Hamilton, Woodward, Etc.
 We expect several hundred accessories.

MAGNETOS & INVENTORY

Large Selection of Magneto Cores, Bendix and Slick, 4 and 6 Cylinder
 Harness Assys., New and Used
 Various New Bendix and Slick Inventory Including: Gears, Coils, Distributor Blocks, Etc.

AUCTIONEER'S NOTE: This year's auction again promises to be a very large one. We already have a good selection of inventory delivered and are expecting a lot more to include new and serviceable air-frame engines, shop equipment, etc.

STAR MAN BROS. AUCTIONS INC.

124C Royal Drive • Raleigh, NC 68346-2082
 (402) 592-1933

STAR MAN BROS. AIRLINE SERVICES, INC.

9000 NW 15th Street • Miami, FL 33172
 (305) 477-6865 • www.starmanauctions.com

FUEL INJECTION INVENTORY

Various RSA-5 and RSA-10 Fuel Injection Servos
 Cont. Fuel Injection Pumps
 Throttle Bodies, Flow Dividers, Injector Lines, Etc.

★ ★ ★ CYLINDERS ★ ★ ★

Approx.: 125 Continental Cylinder Cores. Includes 65/85, 200, 360, 470, 520, Etc.
 Approx.: 125 Lycoming Cylinder Cores. Includes O-290, 235, 320, 360, 540, Etc.

CRANKSHAFTS & CAMSHAFTS

Good Selection of Cont. and Lyc. Crankshafts, Both 4 and 6 Cylinder
 Good Selection of Lyc. and Cont. Camshafts, 4 and 6 Cylinder

★ ★ ★ CRANKCASES ★ ★ ★

Good Selection of Crankcases, Both Continental and Lycoming, 4 and 6 Cylinder

TURBINE & JET ENGINE ACCESSORIES

Bleed Air Control Valves, Delco Distributor Valves, Fuel Pumps, Fuel Flow Transmitters, Hyd. Pumps, Ignition Exciters, Over Voltage Controllers, Turbine Prop Governors, Turbine Tach Generators, Prop Sync Controllers, Unfeather Pumps, Check Valves, Pressure Switches, Shut Off Valves, Etc.

GARRETT TFE-731 INVENTORY

2nd Stage Nozzles, 2nd Stage Nozzles and Inner Seals, Supports, HPC Diffuser, Combustion Liners, 1st Stage Nozzles w/Inner Seals, 3rd Stage Nozzles, Liners, Ducts, Fan Inlet Case, Turbine Housing, HPT Blades, Nozzle Segments, Shroud Segments, LPT Blades, Gear Assemblies, Shroud Segments, Rotating Seals, Ring Gears, Bearings, Etc. Note: This Inventory will be sold as Repairable Inv.

LYCOMING & CONTINENTAL INVENTORY

Will Include Both New and As Removed Parts: Accessory Cases, Oil Sumps, Oil Pans, Push Rods and Housing, Connecting Rods, Starter Ring Gears, Good Selection of Internal Gears, Intake Pipes, Cross Over Tubes, Tappets, Valves, Pistons, Rocker Arms, Piston Rings and Pins, Accy. Mounts and Drives, Counter Weights, Engine Legs, Rocker Box Covers, Valve Seats and Guides, Bearings, Bushings, Engine Hardware, Etc.

ROLLS ROYCE DART 542 INVENTORY

Good Selection of Rolls Royce Dart 542 Engine Inv., Various Rolls Royce Dart Accessories Including Oil Coolers, Fuel Controllers, Prop Controllers, Press Switches, Whitaker Valves, Prop Sync Units, Etc.

HARDWARE INVENTORY

Good Selection of Hardware to Include AN, MS, NAS, Bolts, Nuts, Screws, Washers, O-Rings, Gaskets, AN Fittings, Cotter Pins, Clamps, Gaskets, Seals

ELECTRICAL INVENTORY

Good Selection Including: Beacons, Strobes, Nav Lights, Sealed Beams, GE Bulbs, Whalen & Grimes Power Supplies, Circuit Breakers, Switches, Solenoids, Power Supplies, Regulators, Reverse Current Relays, Carbon Pile Regulators, Landing and Taxi Lights, Post Lights, Transformers, Static Inverters, Relays

★ ★ MISCELLANEOUS ★ ★

Scatt Hose, Aero Duct, High and Low Pressure Hose, Champion and Misc. Other Oil Filters, Large Selection of Spark Plugs, Batteries, Fabric Working Material

★ OXYGEN INVENTORY ★

Good Selection of Oxygen Bottles, Regulators, Masks, Etc.

Everything sells "AS IS, WHERE IS" with no warranties implied or expressed. Neither the auctioneer nor owners shall be liable for any incorrect description, fault, or defect. Everything positively sells to the highest bidder. Payment must be made in full day of sale. No property removed until settled for. Auctioneer not responsible for accidents or stolen property. All counts are approximate.

★ ★ PROPELLERS ★ ★

Various Fixed Pitch Props
 8 Hartzell 3 Bladed Prop Hubs to Include King, Air Hubs
 Hamilton Standard 12D40 Prop, Damaged
 Various Constant Speed Props
 Several Wood Prop Hubs

★ ★ ★ INSTRUMENTS ★ ★ ★

Approx. 1,000 Instruments Including: HSI's, Altimeters, Gyros, Air Speed Ind., Fuel Gauges, Press. Gauges, Turn and Banks, Multi Engine Gauges, Oil Gauges, Clocks, Mach Ind., Flight Directors, Compasses, Temp. Gauges, OAT's, Suction, Very Good Selection of Turbine Engine Gauges

★ ★ ★ AVIONICS ★ ★ ★



Very Large Selection of Avionics Including: KX-155's, KMA-24's, KN-64's, KNS-80's, KY-196 and 197A's, KT-76A's, KR-87's, KLN-89B, KLN-88, KDA-622, MK-12E, RT-385A's, KI-225, KI-209, KI-204, KI-208, KI-525A, KXP-755 w/Head, KR-85's, KNR-632 Nav System w/KI-206, KY-195B, KN-63, King RMI System, Collins 351, RT-459A's, Arnav Systems Star 5000 GPS Receiver, King KCU-565A Digital Control Units, King KPI-553, R-546E's, Ryan Storm Scope WX-10 System, Edo-Air Inventory, KXP-250 Transponder, Several Other Pieces. There are Approx. 700 Pieces of Avionics Test Equip.

AVIONICS REPAIR INVENTORY

Large Selection Including King Collins, Etc. LED's, Diodes, Transisters, Relays, Plugs, Dials, Knobs, Mounts, Chips, Etc.

★ ★ ★ MANUALS ★ ★ ★



Approx. 500 Manuals, Including Parts and Service. Most of these Manuals are in Very Good Condition: Cessna 120, 140 Thru 421, Cessna Avionics

Lycoming 235, 320, 360
 Continental Engine Manuals
 Rockwell 112, Mooney M-20, Hughes 269 and 369
 Several Accy. Manuals
 ATP Microfiche Library with Several Aircraft Types
 Cessna Flight Prep Audio Visual Library and Training Tapes
 Various Flight Training Manuals

AVIONICS TEST EQUIP.

AID/R.C. Allen Pitot Static Tester, Altitude Controller Testers, Manometers, Barometer, Mensor Altimeter/VSI Test Sets, Dead Weight Testers, Liquid Quantity Ind. Testers, Magnet Charger, BK Precision Model 1474 30 Mz Oscilloscope, Hitachi V-650F 60 Mz Oscilloscope, Rate Table, Vacuum Pumps, BK Digital Multi Meters, Etching Table and Lettering, Mdl. 600 Signal Generator, Several Other Pieces

