

AVIATION

AUCTION

SATURDAY, JULY 13, 2002

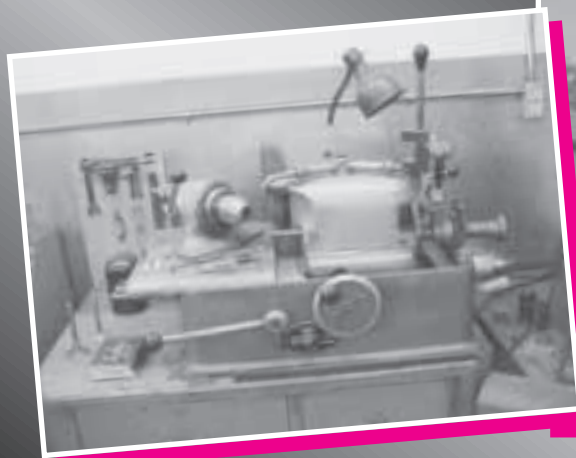
STARTING AT 9:00 A.M.

Assets Surplus to

TRI-STATE AIRMOTIVE

20 Tri-State Road — Carroll County Airport

★ ★ ★ **BERRYVILLE, ARKANSAS** ★ ★ ★



ABSOLUTE AUCTION

SALE SITE PHONE (870) 423-4911

PRSR FIRST CLASS
U.S. POSTAGE
PAID
PERMIT NO. 7
WATERLOO, NE

FIRST CLASS

AIRLINE CONNECTIONS

Airline service into Northwest Arkansas Regional by American, Delta, U.S. Air and Northwest. Private aircraft can land at Carroll County Airport. Identifier is 4 MI.

MOTELS

- | | |
|----------------------------------------------------------------------------|-------------------------------------------------------|
| Victoria Inn and Convention Center
(501) 253-6000
Eureka Springs, AR | Comfort Inn
(501) 253-5241
Eureka Springs, AR |
| Holiday Inn Express
(501) 253-5040
Eureka Springs, AR | Motel 6
(501) 253-5600
Eureka Springs, AR |
| Best Western Eureka Inn
(501) 253-9551
Eureka Springs, AR | Super 8 Motel
(501) 253-5959
Eureka Springs, AR |
| Best Western Inn of the Ozarks
(501) 253-9768
Eureka Springs, AR | Travelers Inn
(501) 253-8386
Eureka Springs, AR |
| | Travel Lodge
(501) 253-8992
Eureka Springs, AR |

NOTE: Eureka Springs is a historic town with a large amount of shopping and things to do and see. Make your motel reservations early. If you would like a list of several other motels, lodges or bed & breakfasts, call our office.

STARARMAN BROS. AUCTIONS INC.

1240 Royal Drive • Papillion, NE 68046-2082
(402) 592-1933

www.starmanauctions.com

Return Service Requested

STARARMAN BROS. AUCTIONS INC.

1240 Royal Drive • Papillion, NE 68046-2082
(402) 592-1933

STARARMAN BROS. AIRLINE SERVICES, INC.

9940 EAST CALUSA CLUB DRIVE • MIAMI, FL 33186
(305) 382-6199

www.starmanauctions.com

★ ★ ★ RAMP EQUIPMENT and FUEL TRUCK ★ ★ ★



United Tractor SM-30D Tug, 3,000 Lb. DBP, 4 Cyl. Gas, Auto. Trans.



Hobart Drive Around Generator, 500 Amp Continuous, 800 Amp Peak



Big B Start Cart with Charger, 12 and 28 Volt

500 Gallon De-Fuel Cart



Clark Model C500-30 Forklift, 3,000 Lb., 12 Ft. Dual Stage Mast, Gas, Hard Rubber



Military Surplus 24 Volt Start Cart with 4 Cyl. Gas Engine



Davco Industries Model 28G-384 Battery Start Cart with Charger, 28 Volt (Nearly New)



'64 International Fuel Truck, 1,200 Gallon Steel Tank, Single Pump Meter and Reel, Electric Rewind, Facet Filter, (Note: Truck Has Not Been Used in Approximately Two Years.)

★ ★ ★ TEST and AVIONICS EQUIPMENT ★ ★ ★

Sonic Model FTS Mark I Ultrasonic Flaw Thickness Scope with Master



Onboard Systems Model C-440-15K Electronic Aircraft Scales with (3 Ea.) 15,000 Lb. Load Cells C & D Heater Decay Test Set



Garrett Airesearch Turbo Controller Test Box, Model 12-111, Part Series 276084-1-1
Garrett Airesearch Turbo Controller Test Set, Part #481070-1



MEC-730 Transponder Ramp Tester with Antenna
A.I.D. RC Allen Model 25-3003-1 Static System Test Set
Olympus IFT Type 8D3-20 Borescope with 4-Way Articulating, 68 Inch Flex Cable, and ILK-4 Light Supply (Pictured on Left)

★ ★ ★ HAND TOOLS ★ ★ ★

Miscellaneous Pneumatic Rivet Pullers, Air Drills and Rivet Guns, 7 Inch Right Angle Disc Grinder, Electric Drills, Several Reamers, Sockets, Connecting Rod Fixtures to use with Milling Machine for Bushing Honing, Milling Trees, Bench Vises and Grinders, Flex and Ball Hones, Welding Clamps



UPHOLSTERY SHOP and INVENTORY

Consew Model 206RB-2 Commercial Sewing Machine, Knee and Foot Control
Consew Model 118 Commercial Sewing Machine, Knee and Foot Control
Singer Model 211G155 Commercial Sewing Machine
Union Special Surging Machine
Wade Hand-Operated Eyelet Machine
Shop Built Fabric Burn Test Stand
Several Upholstery Working Tables, 10 Ft. x 6 Ft.
Craftsman Rotor and Table
Scissors, Clamps, Pinking Shears, Irons, Etc.
Inventory to Include: Rolls of Leather and Naugahyde, Fabrics, Carpet, Foam, Thread, Velcro, Seat Belt Webbing, Etc.



★ ★ ★ ENGINE INVENTORY ★ ★ ★

Majority of Inventory is As Removed, Some New, to Include: Good Selection of Internal Gears, Valves, Springs, Connecting Rods, Pushrods and Housings, Engine Mounts and Legs, Tach and Fuel Pump Mounts, Pulleys, Accy. Drive Gears, Upper Deck Lines, TIO-541-E1B5 Parts, Pistons, Counterweights, Thru-Bolts, Turbo Mounts, Oil Filter Necks, Intake Pipe and Tubes, Rocker Arms, Oil Filter Adapters, Dipsticks, Accy. Adapters, Oil Cooler Plates, Idler Shafts, Idler Gears, Collar Assys., Vernatherms, Starter Clutches, Rocker Box Covers, Engine Baffling, Cylinder Baffles, Cont. and Lycoming Accy. Cases, Oil Pans and Sumps, Camshafts

★ ENGINE ★ CORES

(2 Ea.) Disassembled 0-200 Engines, Less Case

STAR MAN BROS. AUCTIONS INC.
1240 Royal Drive • Papillion, NE 68046-2082
(402) 592-1933



STAR MAN BROS. AIRLINE SERVICES, INC.
9940 EAST CALUSA CLUB DRIVE • MIAMI, FL 33186
(305) 382-6199

★★★ SHOP EQUIPMENT ★★★



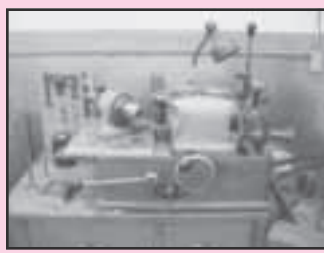
Western Industrial Engineering Magnetic Particle Inspection Bench, Model 15055R, 150 Amp to 5,500 Amp, 10 Ft. Bed with De-Mag Coils, DC Out



Supermax Model YC 1 1/2 VS Vertical Milling Machine, 2 H.P. Motor, 3 Phase, 9 Inch x 42 Inch Table, 60 to 4,200 RPM



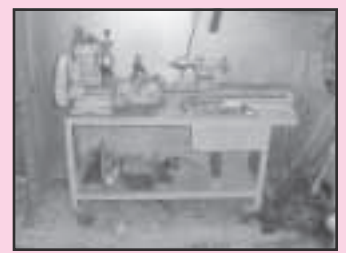
Miller Dialarc HF Constant Current AC/DC Arc and Tig Welder, 220/230/460 Single Phase with Foot Control and Argon



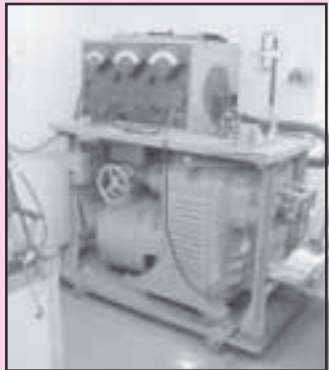
Sioux Model 645L Wet Valve Facing Machine with Rocker Arm Attach.



Sunnen Model "MA" Horizontal Honing Machine with Various Hones



Atlas Bench-Top Lathe, 4 Ft. Bed, 8 Inch Swing, Miscellaneous Chucks and Tooling



Starter Generator Test Stand, Dual Head, Low Speed 1,100 to 5,500 RPM, High Speed 2,400 to 12,000 RPM, 15 H.P. U.S. Motor, with 600 Amp Load Bank



American Ground Equipment Model B-9 Rectifier, 1,200 Amp
Christie 28 Volt, 220 Volt, 3 Phase 1,200 Amp Rectifier



Shop Built Hyd. Mule, Up to 2,500 PSI with Quick Disconnect Couplers



(2 Ea.) Cabin Pressurization Carts, Built by Lock Haven Airmotive, Inc.; Being used on Lear Jets, Citations, Commanders, Etc.



Enco Model 130-53 Sheet Metal Shear, 53 Inch



8 Ft. Sheet Metal Brake



Tennsmith Model 48-22 Bench-Top Sheet Metal Brake, 48 Inch



(2 Ea.) Meyers 24 Inch Aircraft Jacks
(4 Ea.) Jack House 24 Inch Aircraft Jacks
(2 Ea.) Jack House 32 Inch Aircraft Jacks
(4 Ea.) Jack House 36 Inch Aircraft Jacks
(2 Ea.) Jack House High Wing Aircraft Jacks



(2 Ea.) Support Systems, Inc., Aircraft Jacks, P.N. 10-013-11, 10,000 Lb., 48 Inch with Extensions



Enco Model 130-5610 Press Brake and Sheet Metal Roller, 30 Inch



Famco 38 Inch Sheet Metal Shear
Tennsmith 48 Inch Bench-Top Finger Brake
30 Inch Sheet Metal Roller



Central Machinery 6 Inch Belt and 10 Inch Disc Sander
Craftsman 1 Inch Belt Sander



(2 Ea.) Walker 36 Inch Tripod Jacks, 6 Ton



Robinair 17660 Series Refrigerant Recovery System
(2 Ea.) Nitrogen Carts with Gauges
Jet #1 Arbor Press
Rimac Valve Spring Tester



Shop Built Fuel Pump Overhaul Stand with Variable Speed Reversible Speed Motor, Flow and Pressure Gauges
Shop Built Oil Cooler Pressure Test Stand
12 Ton Capacity Hyd. Pipe Bender, Usage Range 1/2 Inch, 3/4 Inch, 1 Inch, 1 1/4 Inch, 1 1/2 Inch, and 2 Inch
Lincoln 225 Amp Arc Welder



Large Double Head Dual Stage Air Compressor, 30 H.P., 3 Phase Motor on 200 Gallon Tank and 200 Gallon Storage Tank with Dryer
Powerex Dual Stage 15 H.P. Air Compressor
Hose Cutoff Saw
Walker Turner 10 Inch Industrial Table Saw, 220 Volt
Volt Master 6,000 Watt Generator, 120/240 Volt, 60 Cycle, Single Phase, with B & S 8 H.P. Engine
Kwick Kleen 55 Gallon Manual Water Purification System
PBR Resolv-R-2 Lacquer Thinner Reclaimer
Delta 2-Speed 16 Inch Scroll Saw
Joy Bar Tow Bar
Bracket Tow Bar



Promax Roger Refrigerant Recovery and Recycling Unit



Advance Convertamatic Model 26B Walk-Behind Hangar Scrubber
Chicago Model DP-558 Bench-Top Drill Press, Variable Speed
Craftsman 12 Inch Band Saw
Craftsman 6 Inch Belt Sander
Miscellaneous Small Hand Tow Bars
Good Selection of Maintenance Stands, Various Sizes
Stepladders
Shop Built 100 and 200 Series Cessna Wing Jig
Shop Built Cessna Twin Engine Wing Jig



Edlund Large Floor Model Drill Press, Variable Speed, Cast Iron

6-Burner Cylinder Heat Treat Stand
(2 Ea.) Garrett Engine Stands
Garrett Engine Sling
Tire Safety Cage
Stanley Bostitch 1.5 H.P. Builder Series Portable Air Compressor
Ray Electronics Model 7206 NiCad Battery Charger Tester
2,000 Lb. Hyd. Engine Hoist

★★★ CABINETS, TABLES, SHELVES ★★★

(4 Ea.) Two-Door Metal Cabinets
Several 4 Ft. x 8 Ft. Shop Tables with Folding Legs, Heavy Duty
Miscellaneous Metal Shelving
Fireproof Cabinet

★ ★ ★ ACCESSORIES ★ ★ ★

(20 Ea.) Starter Cores, Complete Pestolite and Delco, 12 and 24 Volt
 Large Selection of Disassembled Starters
 (20 Ea.) Alternator Cores, 12 and 24 Volt
 Several Disassembled Alternators
 Lycoming Part #LW-13897 Turbo Charger, Overhauled
 Turbo Charger Cores
 Overhauled and Core Waste Gates
 Overhauled and Core Waste Gate Controllers
 (10 Ea.) Carburetors, MA-3SPA and 4SPA
 (10 Ea.) Oil Coolers
 Several Fuel Pumps
 Wet and Dry Vac. Pumps
 Prop Governors
 Cont. Right Angle Starter Drives and Inv. Includes: Housings, Shafts,
 Gears, Springs, Cont. Oil Pumps, Also Housings and Gears

★ MAGNETOS and INVENTORY ★

(25 Ea.) Mag Cores Complete, Bendix and Slick, 4 and 6 Cyl.
 Large Selection of Disassembled Mags
 Mag Inventory Includes New and As Removed Slick and Bendix:
 Blocks, Contacts, Coils, Gears, Points, Housings, Couplings, Mag-
 nets, Etc.

★ STARTER, GENERATOR and ★
 ALTERNATOR INVENTORY

New and As Removed: Armatures, Housings, Fields, Stators, Rotors,
 End Caps, Fans, Covers, Starter Clutches, Starter Nose Housings,
 Etc.

★ TURBO CHARGER INVENTORY ★

New and As Removed: Rajay and Garrett Controllers, Waste Gates,
 Hot and Cold Housings, Impellers, Heat Shield Blankets, Etc.

★ ★ ★ CRANKCASES ★ ★ ★

(3 Ea.) Lycoming 0-235 Yellow Tagged Cases, (2) are L2C
 (2 Ea.) Lycoming 0-290 Crankcases
 Cont. 0-470-R Crankcase
 Cont. I0-360 Crankcase
 Cont. 0-300 Crankcase
 Lyc. 0-320-H2AD Crankcase

★ ★ ★ CYLINDERS ★ ★ ★

Approximately 225 Cylinder Cores to Include:
 Cont.: 0-200, 0-300, I0-360, 470, 520 and GTSIO
 Lyc.: 0-290, 0-235, 320, 360, 540

★ ★ ★ WINGS ★ ★ ★

(2 Ea.) C-421 B Model Wings with Gear Damaged
 1980 Seneca II Left Hand Wings
 (2 Ea.) Cherokee 180 Wing

★ ★ ★ HARDWARE ★ ★ ★

Nuts, Bolts, Screws, Clamps, AN & MS, Large Selection of Scatt Hose,
 High and Low Pressure Hyd. Hose

★ ★ MERLIN II B PROJECT ★ ★



1968 Merlin II B Project

Aircraft is Fairly Complete—Less Engines, Props, Some
 Radio, Instruments and Interior, Various Other Small Parts,
 Has Closed Main Gear Door Mod., Approximately 6,000
 Hours Total Time, with Bill of Sale

★ ★ ★ AIRFRAME and ★ ★ ★
 MISCELLANEOUS INVENTORY

Quick Drains, Fuel Caps, Brake Pucks, Beacon Parts, Door Seal, In-
 strument Panels, C-150 Wheel Pants, Fuel Selector Valves, Push-Pull
 and Retract Tubes, Retract Rods, Cabin and Baggage Door Actua-
 tors, Nose Gear Steering Rods, Seneca Air Box, 210 Gear Door Ac-
 tuators, Exhaust Clamps, C-172 Long Range R/H Tank, C-150 Cabin
 Section, Spinners, 6:00 x 6 Wheels and Tires, C-172 Mufflers, King
 Air Stacks, Door Handles, Beach Baron Nose Gear Shims, 400 Series
 Tip Tanks, 400 Series Cowls and Escape Hatch, C-172 Vertical Fin,
 Miscellaneous Other Cessna and Piper Airframe Pieces

★ ★ ★ SEATS ★ ★ ★

Good Selection to Include: Merlin II B, Navajo, Cessna, Piper, Etc.,
 Miscellaneous Interior

★ AVIONICS and INSTRUMENTS ★

King KWX-40 Weather Radar System Complete, Bendix/King KLN-90
 GPS, Bendix King KLN-80 GPS, King KTR-953 HF Receiver, King
 KPI-550 Indicator RMI, King KR-85 ADF, KS-505 Power Supplies, Elt's
 Miscellaneous Other Avionics, Bird Wattmeter
 Approximately (100) Instrument Cores to Include: Fuel Qty., Mani-
 fold, Turn and Banks, RPM, EGT, Fuel Flow, Miscellaneous Turbine
 Gauges, Airspeed, Etc.

★ ★ ELECTRICAL INVENTORY ★ ★

(2 Ea.) Model PC-16-3 Static Inverters, Whelen Power Supplies, Toggle
 Switches, Microswitches, Ignition Solenoids, Voltage Regulators, Cir-
 cuit Breakers, Cannon Plugs, Grims & Hoskins Power Supplies, Re-
 sistors, Diodes, Etc.

★ ★ ★ OFFICE EQUIPMENT ★ ★ ★

Miscellaneous Office Chairs, Desks, Shelving, (3 Ea.) Satellite Dishes,
 Microfiche Readers, Etc.

AUCTIONEER'S NOTE: Larkin Floyd, Owner of Tri-State Airmotive, has decided to down-size his operation to a one-man shop and has therefore contracted with Starman Bros. Auction to sell at public auction all equipment and inventory that is surplus to his needs. This auction offers a very good line of shop and test equipment. Everything sells "AS IS, WHERE IS," with no warranties implied or expressed. Neither the auctioneer nor owners shall be liable for any incorrect description, fault, or defect. Everything positively sells to the highest bidder. Payment must be made in full day of sale. No property removed until settled for. Auctioneer not responsible for accidents or stolen property. All counts are approximate.

TERMS: Cash, Certified Funds, or Com-
 pany Check ONLY if accompanied by
 Bank Letter of Guarantee!! NO EXCEP-
 TIONS! Wire Transfers will be accepted
 with a 20% nonrefundable deposit day
 of sale. We also accept MasterCard and
 Visa. A 3% Buyer's Premium will apply
 to this auction. If payment is Cash,
 Check, Certified Funds or Wire Transfer
 the 3% Buyer's Premium will be waived.

STARMAN BROS. AUCTIONS INC.

1240 Royal Drive ■ Papillion, NE 68046-2082
 (402) 592-1933



STARMAN BROS. AIRLINE SERVICES, INC.

9940 EAST CALUSA CLUB DRIVE ■ MIAMI, FL 33186
 (305) 382-6199